

Converting Colors

HunterLab(54.7700, 23.3471,
12.2363)

Have a look what the booklet for
HunterLab(54.7700, 23.3471,
12.2363) contains.

HunterLab(54.8602, 23.2385, 12.1403)	3
<i>Conversions</i>	4
<i>Details</i>	6
<i>Harmonies</i>	12
<i>Previews</i>	24
<i>Color Blindness Simulation</i>	28
<i>CSS Examples</i>	31

Color

**HunterLab(54.8602, 23.2385,
12.1403)**

Conversions

Conversions Part 1

Format	Color
Hex	CC8180
RGB	204, 129, 128
RGB Percent	80%, 51%, 50%
CMY	0.2000, 0.4941, 0.4980
CMYK	0.00, 0.37, 0.37, 0.20
HSL	1°, 43%, 65%
HSV	1°, 37%, 80%
XYZ	36.6484, 30.0964, 24.2997
YIQ	151.3110, 45.0210, 15.5890

Conversions

Conversions Part 2

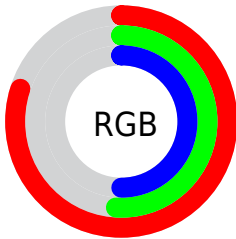
Format	Color
RYB	204, 129, 128
Decimal	13402496
CIELab	61.74, 28.84, 12.72
CIELCh	62, 31.524, 23.792
Yxy	30.0979, 0.4025, 0.3306
Android (android.graphics.Color)	4291592576 (0xFFCC8180)
YUV	151.3110, -11.4923, 46.2083
Hunter-Lab	54.8602, 23.2385, 12.1403

Details

The HunterLab color **54.8602, 23.2385, 12.1403** is a light color, and the websafe version is hex **CC9999**. A complement of this color would be **71.8740, -23.5675, -3.2490**, and the grayscale version is **55.7891, -2.9768, 3.0311**.

A 20% lighter version of the original color is **76.4612, 21.4709, 13.5924**, and **35.1561, 20.9324, 9.5544** is the 20% darker color. If you saturate the color by 10%, you get **49.8219, 31.1959, 14.4949**, and if you desaturate by 10%, it is **60.4369, 15.4704, 9.8629**.

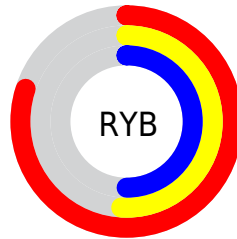
Distribution



Red (80%)

Green (51%)

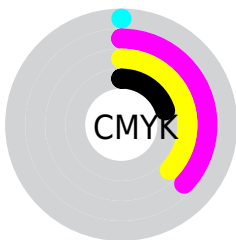
Blue (50%)



Red (80%)

Yellow (51%)

Blue (50%)

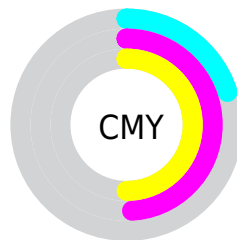


Cyan (0%)

Magenta (37%)

Yellow (37%)

Black (20%)



Cyan (20%)

Magenta (49%)

Yellow (50%)

Brightness & Saturation Gradients

These gradients show how the HunterLab color 54.8602, 23.2385, 12.1403 changes by changing the brightness by 10 percent. The first figure shows a shift by +10% for each color and the second figure -10%.

Similar to the brightness gradients but the following saturation gradients show a change of the HunterLab color 54.8602, 23.2385, 12.1403 by changing the saturation by 10% instead.

■ 54.8602, 23.2385,
12.1403

■ 54.8602, 23.2385,
12.1403

173.8852, 27.4490,
23.6320

■ 44.6239, 22.3445,
10.8520

■ 77.3414, 24.7093,
14.6822

■ 35.1166, 21.3340,
9.5371

■ 89.5097, 25.3112,
15.9464

■ 26.4008, 20.1905,
8.1794

■ 102.2566, 25.8337,
17.2118

■ 18.5563, 18.9023,
6.7507

115.5570, 26.2831,
18.4811

■ 11.6934, 17.4767,
5.5190

129.3887, 26.6650,
19.7563

■ 4.3872, 28.4486,
3.0710

143.7322, 26.9840,

0.0000, NaN, NaN

21.0391

0.0000, NaN, NaN

158.5696, 27.2442,
22.3307

0.0000, NaN, NaN

■ 54.8602, 23.2385,
12.1403

■ 54.8602, 23.2385,
12.1403

■ 49.8219, 31.1959,
14.4949

■ 60.4369, 15.4704,
9.8629

■ 45.4215, 39.1216,
16.8472

■ 66.4602, 8.0001,
7.6934

■ 41.7722, 46.6051,
19.0630

■ 72.8604, 0.8492,
5.6407

■ 38.9763, 53.0612,
20.9507

■ 79.5806, -5.9974,
3.6995

■ 37.0936, 57.8539,
22.3076

■ 86.5759, -12.5718,
1.8584

■ 36.0946, 60.5760,
23.0376

■ 93.8105, -18.9111,
0.1046

■ 35.9109, 61.0796,
23.1974

■ 95.6961, -20.6484,
-0.0097

Harmonies

Analogous

The Analogous color harmony consists of three colors that are next to each other on the color wheel.



54.8615, 25.7043, 0.2145



54.8602, 23.2385, 12.1403



54.8615, 13.4663, 19.5655

Triad

The Triadic color harmony groups three colors that are evenly spaced from another and form a triangle on the color wheel.



54.8615, 23.2358, 12.1413



54.8615, -22.5584, 15.7923



54.8615, -5.7423, -28.1186

Complementary

The Complementary color scheme is a pair of colors which are on the opposite of each other on the color wheel.



54.8602, 23.2385, 12.1403



71.8740, -23.5675, -3.2490

Split Complementary

Split-complementary colors differ from the complementary color scheme. The scheme consists of three colors, the original color and two neighbors of the complement color.



54.8615, -17.6019, -21.2461



54.8602, 23.2385, 12.1403



54.8615, -26.6797, 5.6205

Square

The Square scheme is like the rectangle color scheme, but the four colors are evenly spaced on the color wheel.



54.8615, 23.2358, 12.1413



54.8615, -13.1308, 21.2844



54.8615, -24.9578, -8.0818



54.8615, 8.0748, -25.1539

Rectangle

The Rectangle color scheme consists of four colors that form a rectangle on the color wheel.



54.8602, 23.2385, 12.1403



54.8615, 4.5967, 21.9712



54.8615, -24.9578, -8.0818



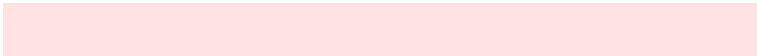
54.8615, -10.0720, -26.8379

Sweetspot

The Sweet Spot groups the original color and five complimentary colors.



54.8615, 23.2358, 12.1413



90.5081, 4.6234, 8.2686



57.1276, 36.0094, -23.4570



41.3484, 2.7226, 3.9929

0.0000, NaN, NaN



46.2646, -2.4686, 2.5136

Same Dimension

The Same Dimension uses a secret algorithm to generate beautiful new colors.



54.8615, 23.2358, 12.1413



65.1440, 38.4298, 18.1448



64.5512, 4.3774, 21.0949



33.5216, 1.1042, 2.8476



28.5089, 48.3936, 18.4142



6.5407, 10.7700, 4.2189

Inverse Universe

The Inverse Universe completely reimagines the original color for something new.



71.8740, -23.5675, -3.2490



91.3090, -34.3146, -5.7685



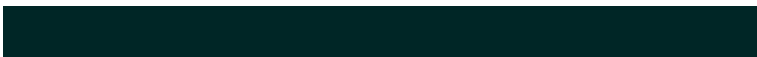
60.1844, -6.1503, -19.3002



35.6379, -4.6154, 0.9661



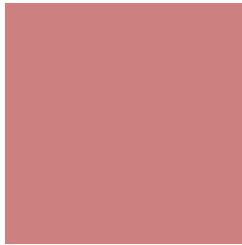
53.9791, -28.1392, -6.7248



12.2943, -6.4318, -1.4825

Previews

White Background



This preview shows how the HunterLab color 54.8602, 23.2385, 12.1403 looks on a white background.

Color Contrast Check

Large Text (above 18pt) WCAG AA × Fail

Any Text WCAG AA × Fail

Large Text (above 18pt) WCAG AAA × Fail

Any Text WCAG AAA × Fail

Black Background



This preview shows how the HunterLab color 54.8602, 23.2385, 12.1403 looks on a black background.

Color Contrast Check

Large Text (above 18pt) WCAG AA ✓ Pass

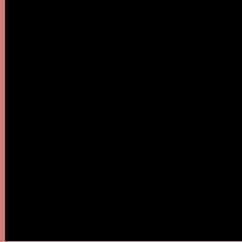
Any Text WCAG AA ✓ Pass

Large Text (above 18pt) WCAG AAA ✓ Pass

Any Text WCAG AAA ✓ Pass

If you want to check with other color combinations, try the [Color Contrast Checker](#).

HunterLab 54.8602, 23.2385, 12.1403 Background



This preview shows how black text looks on a background with the HunterLab color 54.8602, 23.2385, 12.1403.



This preview shows how white text looks on a background with the HunterLab color 54.8602, 23.2385,

Color Blindness Simulation

Color vision deficiency is a very complex topic, and I could not describe the different causes any better than Wikipedia does, so if you want to learn more, you should check out their [article about color blindness](#).

Dichromacy



Original Color

54.8602, 23.2385, 12.1403

Protanopia

55.0440, -2.7625, 7.9700

Deuteranopia

54.9526, 3.5161, 12.9896



Tritanopia

54.9760, 25.2618, 8.7942

Trichromacy



Original Color

54.8602, 23.2385, 12.1403

Protanomaly

54.7279, 6.0192, 9.3941

Deuteranomaly

54.9199, 10.3848, 12.7139

Tritanomaly

54.8987, 24.8779, 9.9055

Monochromacy



Original Color

54.8602, 23.2385, 12.1403

Achromatopsia

55.6299, -2.9683, 3.0225

Achromatomaly

54.9310, 5.7694, 5.9005

CSS Examples

Text

The CSS property to change the color of the text to HunterLab 54.8602, 23.2385, 12.1403 is called "color". The color property can be set on classes, ids or directly on the HTML element.

This example shows how text in the color `rgb(204, 129, 128)` looks like.

```
.text, #text, p{  
    color:rgb(204, 129, 128)  
}
```

If you want to add a text shadow in that color use the text-shadow property, you can generate a text shadow directly with our [CSS Text Shadow Generator](#).

Here you see how black text with a 4 pixel rgb(204, 129, 128) colored shadow looks like.

```
.shadow{ text-shadow: 4px 4px 2px rgb(204, 129, 128) }
```

Border

The CSS property to change the border of an element to HunterLab 54.8602, 23.2385, 12.1403 is called "border". The border property can be set on classes, ids or directly on the HTML element.

This example shows the color as border, it can be applied via the CSS property "border" or "border-color".

```
.border, #border, table{ border:4px solid rgb(204, 129, 128) }
```


If only the border color should be changed use the property `border-color`.

```
.border{ border-color:rgb(204, 129, 128) }
```

If you want to add a box shadow in that color use:

Here you see how a box with a 4 pixel `rgb(204, 129, 128)` colored shadow looks like.

```
.boxshadow{ -moz-box-shadow:4px 4px 4px  
4px rgb(204, 129, 128); -webkit-box-  
shadow:4px 4px 4px 4px rgb(204, 129, 128);  
box-shadow:4px 4px 4px 4px rgb(204, 129,  
128) }
```

Background

The CSS property to change the background color of an element to HunterLab 54.8602, 23.2385, 12.1403 is called "background". The background property can be set on classes, ids or directly on the HTML element.

```
.background, #background, body{  
background: rgb(204, 129, 128) }
```

If only the background color should be changed can be used:

```
.background{ background-color: rgb(204,  
129, 128) }
```

This example shows the color as background, it is applied via the CSS property "background".

To optimize and compress your CSS code, you can use our [online CSS compressor and optimizer](#) based on csstidy. If you want to create a linear or radial gradient as background or border, check our [CSS Gradient Generator](#).

Hey! You found this booklet interesting? Support Converting Colors with the new Membership Option!

The pro membership hides all ads, plus gives you double the colors in the color bucket, and more awesome pro features!

[Learn more, Memberships starting at \\$2.50/m!](#)

**Follow me
on Twitter!**

@ConvertingColor