

Converting Colors

HunterLab(54.7908, 14.4560,
10.3558)

Have a look what the booklet for
HunterLab(54.7908, 14.4560,
10.3558) contains.

HunterLab(54.8572, 14.4872, 10.4626)	3
<i>Conversions</i>	4
<i>Details</i>	6
<i>Harmonies</i>	12
<i>Previews</i>	24
<i>Color Blindness Simulation</i>	28
<i>CSS Examples</i>	31

Color

**HunterLab(54.8572, 14.4872,
10.4626)**

Conversions

Conversions Part 1

Format	Color
Hex	BD8884
RGB	189, 136, 132
RGB Percent	74%, 53%, 52%
CMY	0.2588, 0.4666, 0.4823
CMYK	0.00, 0.28, 0.30, 0.26
HSL	4°, 30%, 63%
HSV	4°, 30%, 74%
XYZ	33.9553, 30.0931, 25.8487
YIQ	151.3910, 32.8720, 9.9920

Conversions

Conversions Part 2

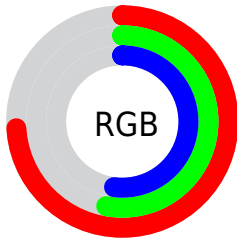
Format	Color
R _Y B	189, 136, 132
Decimal	12421252
CIE Lab	61.74, 19.72, 10.19
CIE LCh	62, 22.192, 27.326
Yxy	30.0945, 0.3777, 0.3348
Android (android.graphics.Color)	4290611332 (0xFFBD8884)
YUV	151.3910, -9.5598, 32.9831
Hunter-Lab	54.8572, 14.4872, 10.4626

Details

The HunterLab color **54.8572, 14.4872, 10.4626** is a light color, and the websafe version is hex **CC9999**. A complement of this color would be **65.7846, -17.3065, -3.1580**, and the grayscale version is **55.8173, -2.9783, 3.0327**.

A 20% lighter version of the original color is **77.4096, 14.8244, 12.8038**, and **35.1404, 13.2798, 8.0781** is the 20% darker color. If you saturate the color by 10%, you get **50.0723, 21.1088, 12.6898**, and if you desaturate by 10%, it is **60.0183, 8.1328, 8.2441**.

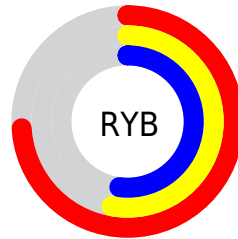
Distribution



Red (74%)

Green (53%)

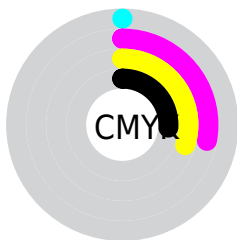
Blue (52%)



Red (74%)

Yellow (53%)

Blue (52%)

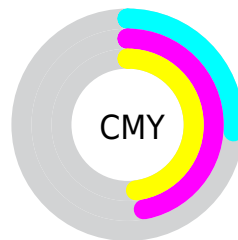


Cyan (0%)

Magenta (28%)

Yellow (30%)

Black (26%)



Cyan (26%)

Magenta (47%)

Yellow (48%)

Brightness & Saturation Gradients

These gradients show how the HunterLab color 54.8572, 14.4872, 10.4626 changes by changing the brightness by 10 percent. The first figure shows a shift by +10% for each color and the second figure -10%.

Similar to the brightness gradients but the following saturation gradients show a change of the HunterLab color 54.8572, 14.4872, 10.4626 by changing the saturation by 10% instead.

■ 54.8572, 14.4872,
10.4626

■ 54.8572, 14.4872,
10.4626

173.8807, 15.5105,
20.9145

■ 44.6210, 14.0119,
9.3288

■ 77.3380, 15.1668,
12.7285

■ 35.1140, 13.4348,
8.1831

■ 89.5061, 15.3936,
13.8673

■ 26.3984, 12.7376,
7.0143

■ 102.2528, 15.5534,
15.0140

■ 18.5542, 11.8994,
5.8015

115.5531, 15.6517,
16.1704

■ 11.6915, 10.8965,
4.6222

129.3847, 15.6929,
17.3378

■ 4.3835, 19.3643,
3.0685

143.7280, 15.6810,

0.0000, NaN, NaN

18.5172

0.0000, NaN, NaN

158.5653, 15.6192,
19.7092

0.0000, NaN, NaN

■ 54.8572, 14.4872,
10.4626

■ 54.8572, 14.4872,
10.4626

■ 50.0723, 21.1088,
12.6898

■ 60.0183, 8.1328,
8.2441

■ 45.7284, 27.9295,
14.8749

■ 65.4951, 2.0699,
6.0560

■ 41.9066, 34.7773,
16.9370

■ 71.2431, -3.7168,
3.9094

■ 38.6931, 41.3511,
18.7544

■ 77.2255, -9.2543,
1.8061

■ 36.1680, 47.2125,
20.1758

■ 83.4129, -14.5738,
-0.2563

■ 34.3834, 51.8571,
21.0629

■ 89.7814, -19.7063,
-2.2823

■ 33.3374, 54.8174,
21.5020

■ 94.6355, -24.5326,
-1.3881

Harmonies

Analogous

The Analogous color harmony consists of three colors that are next to each other on the color wheel.



54.8585, 16.7919, 2.1591



54.8572, 14.4872, 10.4626



54.8585, 7.4147, 15.8262

Triad

The Triadic color harmony groups three colors that are evenly spaced from another and form a triangle on the color wheel.



54.8585, 14.4849, 10.4635



54.8585, -17.6450, 11.6595



54.8585, -3.7900, -17.6534

Complementary

The Complementary color scheme is a pair of colors which are on the opposite of each other on the color wheel.



54.8572, 14.4872, 10.4626



65.7846, -17.3065, -3.1580

Split Complementary

Split-complementary colors differ from the complementary color scheme. The scheme consists of three colors, the original color and two neighbors of the complement color.



54.8585, -12.5609, -13.9819



54.8572, 14.4872, 10.4626



54.8585, -20.2077, 3.8004

Square

The Square scheme is like the rectangle color scheme, but the four colors are evenly spaced on the color wheel.



54.8585, 14.4849, 10.4635



54.8585, -11.1639, 16.4286



54.8585, -18.4116, -5.7190



54.8585, 5.8200, -15.0544

Rectangle

The Rectangle color scheme consists of four colors that form a rectangle on the color wheel.



54.8572, 14.4872, 10.4626



54.8585, 1.1865, 17.5260



54.8585, -18.4116, -5.7190



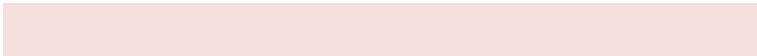
54.8585, -6.9287, -17.0991

Sweetspot

The Sweet Spot groups the original color and five complimentary colors.



54.8585, 14.4849, 10.4635



88.4154, 1.9683, 7.8107



55.5274, 25.0340, -14.4736



40.4919, 1.4476, 3.8181



97.7295, -5.2146, 5.3098



44.2712, -2.3622, 2.4053

Same Dimension

The Same Dimension uses a secret algorithm to generate beautiful new colors.



54.8585, 14.4849, 10.4635



69.2425, 25.0363, 15.9174



62.5647, 0.2985, 17.8698



31.0501, 0.7502, 2.7691



27.4245, 44.6995, 17.6814



5.7602, 7.7825, 3.6856

Inverse Universe

The Inverse Universe completely reimagines the original color for something new.



65.7846, -17.3065, -3.1580



86.7295, -26.1407, -5.9613



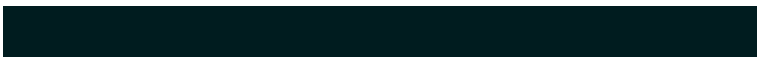
57.0899, -3.8954, -14.8893



32.6981, -3.9979, 0.7270



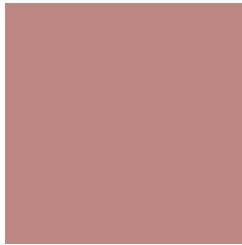
48.3091, -23.1567, -10.3935



9.7410, -4.8040, -1.8048

Previews

White Background



This preview shows how the HunterLab color 54.8572, 14.4872, 10.4626 looks on a white background.

Color Contrast Check

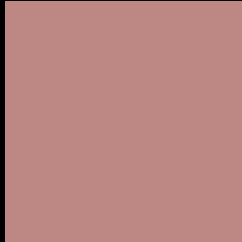
Large Text (above 18pt) WCAG AA × Fail

Any Text WCAG AA × Fail

Large Text (above 18pt) WCAG AAA × Fail

Any Text WCAG AAA × Fail

Black Background



This preview shows how the HunterLab color 54.8572, 14.4872, 10.4626 looks on a black background.

Color Contrast Check

Large Text (above 18pt) WCAG AA ✓ Pass

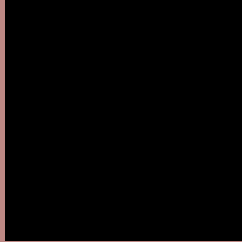
Any Text WCAG AA ✓ Pass

Large Text (above 18pt) WCAG AAA ✓ Pass

Any Text WCAG AAA ✓ Pass

If you want to check with other color combinations, try the [Color Contrast Checker](#).

HunterLab 54.8572, 14.4872, 10.4626 Background



This preview shows how black text looks on a background with the HunterLab color 54.8572, 14.4872, 10.4626.



This preview shows how white text looks on a background with the HunterLab color 54.8572, 14.4872,

Color Blindness Simulation

Color vision deficiency is a very complex topic, and I could not describe the different causes any better than Wikipedia does, so if you want to learn more, you should check out their [article about color blindness](#).

Dichromacy



Original Color

54.8572, 14.4872, 10.4626

Protanopia

55.0704, -2.6179, 7.5907

Deuteranopia

54.9938, 3.9419, 10.8057



Tritanopia

54.7823, 17.5033, 5.5063

Trichromacy



Original Color

54.8572, 14.4872, 10.4626

Protanomaly

54.7171, 3.2655, 8.5344

Deuteranomaly

54.9121, 7.8650, 10.7896

Tritanomaly

54.9259, 16.4305, 7.3504

Monochromacy



Original Color

54.8572, 14.4872, 10.4626

Achromatopsia

55.6299, -2.9683, 3.0225

Achromatomaly

55.2908, 2.7722, 5.8244

CSS Examples

Text

The CSS property to change the color of the text to HunterLab 54.8572, 14.4872, 10.4626 is called "color". The color property can be set on classes, ids or directly on the HTML element.

This example shows how text in the color `rgb(189, 136, 132)` looks like.

```
.text, #text, p{  
    color:rgb(189, 136, 132)  
}
```

If you want to add a text shadow in that color use the text-shadow property, you can generate a text shadow directly with our [CSS Text Shadow Generator](#).

Here you see how black text with a 4 pixel rgb(189, 136, 132) colored shadow looks like.

```
.shadow{ text-shadow: 4px 4px 2px rgb(189, 136, 132) }
```

Border

The CSS property to change the border of an element to HunterLab 54.8572, 14.4872, 10.4626 is called "border". The border property can be set on classes, ids or directly on the HTML element.

This example shows the color as border, it can be applied via the CSS property "border" or "border-color".

```
.border, #border, table{ border:4px solid rgb(189, 136, 132) }
```


If only the border color should be changed use the property border-color.

```
.border{ border-color:rgb(189, 136, 132) }
```

If you want to add a box shadow in that color use:

Here you see how a box with a 4 pixel rgb(189, 136, 132) colored shadow looks like.

```
.boxshadow{ -moz-box-shadow:4px 4px 4px  
4px rgb(189, 136, 132); -webkit-box-  
shadow:4px 4px 4px 4px rgb(189, 136, 132);  
box-shadow:4px 4px 4px 4px rgb(189, 136,  
132) }
```

Background

The CSS property to change the background color of an element to HunterLab 54.8572, 14.4872, 10.4626 is called "background". The background property can be set on classes, ids or directly on the HTML element.

```
.background, #background, body{  
background: rgb(189, 136, 132) }
```

If only the background color should be changed can be used:

```
.background{ background-color: rgb(189,  
136, 132) }
```

This example shows the color as background, it is applied via the CSS property "background".

To optimize and compress your CSS code, you can use our [online CSS compressor and optimizer](#) based on csstidy. If you want to create a linear or radial gradient as background or border, check our [CSS Gradient Generator](#).

Hey! You found this booklet interesting? Support Converting Colors with the new Membership Option!

The pro membership hides all ads, plus gives you double the colors in the color bucket, and more awesome pro features!

[Learn more, Memberships starting at \\$2.50/m!](#)

**Follow me
on Twitter!**

@ConvertingColor