

Converting Colors

HunterLab(54.8203, 19.3391,
12.0386)

Have a look what the booklet for
HunterLab(54.8203, 19.3391,
12.0386) contains.

HunterLab(54.8332, 19.3984, 12.0456)	3
<i>Conversions</i>	4
<i>Details</i>	6
<i>Harmonies</i>	12
<i>Previews</i>	24
<i>Color Blindness Simulation</i>	28
<i>CSS Examples</i>	31

Color

**HunterLab(54.8332, 19.3984,
12.0456)**

Conversions

Conversions Part 1

Format	Color
Hex	C68480
RGB	198, 132, 128
RGB Percent	78%, 52%, 50%
CMY	0.2235, 0.4823, 0.4980
CMYK	0.00, 0.33, 0.35, 0.22
HSL	3°, 38%, 64%
HSV	3°, 35%, 78%
XYZ	35.4362, 30.0668, 24.3579
YIQ	151.2780, 40.6200, 12.7480

Conversions

Conversions Part 2

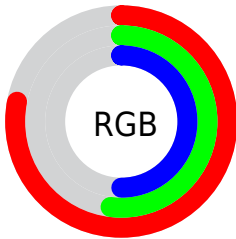
Format	Color
R_{YB}	198, 132, 128
Decimal	13010048
CIE Lab	61.71, 24.90, 12.58
CIE LCh	62, 27.894, 26.800
Yxy	30.0683, 0.3943, 0.3346
Android (android.graphics.Color)	4291200128 (0xFFC68480)
YUV	151.2780, -11.4761, 40.9752
Hunter-Lab	54.8332, 19.3984, 12.0456

Details

The HunterLab color **54.8332, 19.3984, 12.0456** is a light color, and the websafe version is hex **CC9999**. A complement of this color would be **68.7373, -20.6075, -4.0883**, and the grayscale version is **55.7769, -2.9761, 3.0305**.

A 20% lighter version of the original color is **77.2748, 19.8568, 14.4224**, and **35.1424, 17.6567, 9.4837** is the 20% darker color. If you saturate the color by 10%, you get **49.9785, 26.6447, 14.3658**, and if you desaturate by 10%, it is **60.1378, 12.3945, 9.7330**.

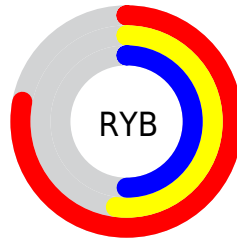
Distribution



Red (78%)

Green (52%)

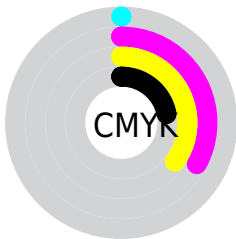
Blue (50%)



Red (78%)

Yellow (52%)

Blue (50%)

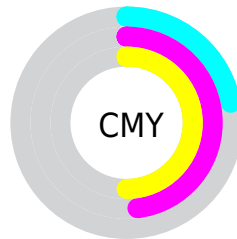


Cyan (0%)

Magenta (33%)

Yellow (35%)

Black (22%)



Cyan (22%)

Magenta (48%)

Yellow (50%)

Brightness & Saturation Gradients

These gradients show how the HunterLab color 54.8332, 19.3984, 12.0456 changes by changing the brightness by 10 percent. The first figure shows a shift by +10% for each color and the second figure -10%.

Similar to the brightness gradients but the following saturation gradients show a change of the HunterLab color 54.8332, 19.3984, 12.0456 by changing the saturation by 10% instead.

■ 54.8332, 19.3984,
12.0456

■ 54.8332, 19.3984,
12.0456

173.8455, 22.2511,
23.4788

■ 44.5987, 18.6807,
10.7659

■ 77.3111, 20.5342,
14.5720

■ 35.0933, 17.8515,
9.4604

■ 89.4779, 20.9765,
15.8292

■ 26.3796, 16.8928,
8.1133

■ 102.2233, 21.3445,
17.0879

■ 18.5375, 15.7874,
6.6966

115.5223, 21.6442,
18.3508

■ 11.6772, 14.5257,
5.4697

129.3528, 21.8806,
19.6200

■ 4.3548, 24.6801,
3.0484

143.6949, 22.0581,

0.0000, NaN, NaN

20.8970

0.0000, NaN, NaN

158.5311, 22.1805,
22.1830

0.0000, NaN, NaN

■ 54.8332, 19.3984,
12.0456

■ 54.8332, 19.3984,
12.0456

■ 49.9785, 26.6447,
14.3658

■ 60.1378, 12.3945,
9.7330

■ 45.6532, 34.0001,
16.6228

■ 65.8184, 5.6939,
7.4607

■ 41.9521, 41.1889,
18.7062

■ 71.8195, -0.7031,
5.2447

■ 38.9685, 47.7806,
20.4611

■ 78.0953, -6.8183,
3.0880

■ 36.7748, 53.2300,
21.7181

■ 84.6093, -12.6835,
0.9877

■ 35.3925, 57.0344,
22.3645

■ 91.3323, -18.3329,
-1.0619

■ 35.0038, 58.1323,
22.5869

■ 95.2606, -22.2379,
-0.5739

Harmonies

Analogous

The Analogous color harmony consists of three colors that are next to each other on the color wheel.



54.8345, 22.2586, 1.7362



54.8332, 19.3984, 12.0456



54.8345, 10.3863, 18.4488

Triad

The Triadic color harmony groups three colors that are evenly spaced from another and form a triangle on the color wheel.



54.8345, 19.3959, 12.0465



54.8345, -21.0523, 13.7631



54.8345, -4.2202, -23.9953

Complementary

The Complementary color scheme is a pair of colors which are on the opposite of each other on the color wheel.



54.8332, 19.3984, 12.0456



68.7373, -20.6075, -4.0883

Split Complementary

Split-complementary colors differ from the complementary color scheme. The scheme consists of three colors, the original color and two neighbors of the complement color.



54.8345, -15.0833, -18.9244



54.8332, 19.3984, 12.0456



54.8345, -24.2576, 4.2047

Square

The Square scheme is like the rectangle color scheme, but the four colors are evenly spaced on the color wheel.



54.8345, 19.3959, 12.0465



54.8345, -13.0190, 19.2787



54.8345, -22.1696, -7.9482



54.8345, 7.9483, -20.6430

Rectangle

The Rectangle color scheme consists of four colors that form a rectangle on the color wheel.



54.8332, 19.3984, 12.0456



54.8345, 2.4800, 20.4412



54.8345, -22.1696, -7.9482



54.8345, -8.1357, -23.1968

Sweetspot

The Sweet Spot groups the original color and five complimentary colors.



54.8345, 19.3959, 12.0465



90.8822, 3.9640, 8.6835



56.0017, 32.0490, -19.2790



41.5415, 2.3796, 4.2059

0.0000, NaN, NaN



46.2646, -2.4686, 2.5136

Same Dimension

The Same Dimension uses a secret algorithm to generate beautiful new colors.



54.8345, 19.3959, 12.0465



68.2018, 32.8057, 18.2800



64.0461, 1.9444, 20.5931



32.7607, 0.8693, 2.8956



28.3025, 46.6286, 18.2562



6.4345, 9.2485, 4.1268

Inverse Universe

The Inverse Universe completely reimagines the original color for something new.



68.7373, -20.6075, -4.0883



90.0998, -30.7210, -7.2752



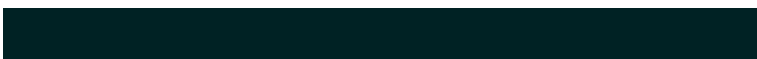
57.9959, -4.2969, -18.9566



34.5826, -4.2961, 0.8025



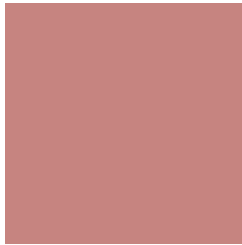
50.7129, -24.8206, -9.8062



11.1810, -5.5790, -1.9318

Previews

White Background



This preview shows how the HunterLab color 54.8332, 19.3984, 12.0456 looks on a white background.

Color Contrast Check

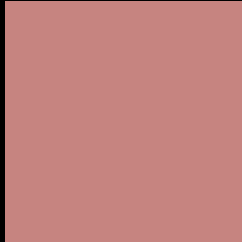
Large Text (above 18pt) WCAG AA × Fail

Any Text WCAG AA × Fail

Large Text (above 18pt) WCAG AAA × Fail

Any Text WCAG AAA × Fail

Black Background



This preview shows how the HunterLab color 54.8332, 19.3984, 12.0456 looks on a black background.

Color Contrast Check

Large Text (above 18pt) WCAG AA ✓ Pass

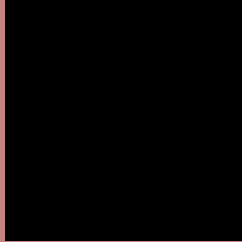
Any Text WCAG AA ✓ Pass

Large Text (above 18pt) WCAG AAA ✓ Pass

Any Text WCAG AAA ✓ Pass

If you want to check with other color combinations, try the [Color Contrast Checker](#).

HunterLab 54.8332, 19.3984, 12.0456 Background



This preview shows how black text looks on a background with the HunterLab color 54.8332, 19.3984, 12.0456.



This preview shows how white text looks on a background with the HunterLab color 54.8332, 19.3984,

Color Blindness Simulation

Color vision deficiency is a very complex topic, and I could not describe the different causes any better than Wikipedia does, so if you want to learn more, you should check out their [article about color blindness](#).

Dichromacy



Original Color

54.8332, 19.3984, 12.0456

Protanopia

55.0178, -2.9060, 8.3462

Deuteranopia

54.9759, 3.6414, 12.6521



Tritanopia

54.7730, 22.3459, 7.2850

Trichromacy



Original Color

54.8332, 19.3984, 12.0456

Protanomaly

54.7942, 4.8368, 9.4438

Deuteranomaly

54.8746, 8.9230, 12.2754

Tritanomaly

54.9111, 21.2998, 9.0588

Monochromacy



Original Color

54.8332, 19.3984, 12.0456

Achromatopsia

55.6299, -2.9683, 3.0225

Achromatomaly

55.0041, 4.6028, 5.9624

CSS Examples

Text

The CSS property to change the color of the text to HunterLab 54.8332, 19.3984, 12.0456 is called "color". The color property can be set on classes, ids or directly on the HTML element.

This example shows how text in the color `rgb(198, 132, 128)` looks like.

```
.text, #text, p{  
    color:rgb(198, 132, 128)  
}
```

If you want to add a text shadow in that color use the text-shadow property, you can generate a text shadow directly with our [CSS Text Shadow Generator](#).

Here you see how black text with a 4 pixel rgb(198, 132, 128) colored shadow looks like.

```
.shadow{ text-shadow: 4px 4px 2px rgb(198, 132, 128) }
```

Border

The CSS property to change the border of an element to HunterLab 54.8332, 19.3984, 12.0456 is called "border". The border property can be set on classes, ids or directly on the HTML element.

This example shows the color as border, it can be applied via the CSS property "border" or "border-color".

```
.border, #border, table{ border:4px solid rgb(198, 132, 128) }
```


If only the border color should be changed use the property `border-color`.

```
.border{ border-color:rgb(198, 132, 128) }
```

If you want to add a box shadow in that color use:

Here you see how a box with a 4 pixel `rgb(198, 132, 128)` colored shadow looks like.

```
.boxshadow{ -moz-box-shadow:4px 4px 4px  
4px rgb(198, 132, 128); -webkit-box-  
shadow:4px 4px 4px 4px rgb(198, 132, 128);  
box-shadow:4px 4px 4px 4px rgb(198, 132,  
128) }
```

Background

The CSS property to change the background color of an element to HunterLab 54.8332, 19.3984, 12.0456 is called "background". The background property can be set on classes, ids or directly on the HTML element.

```
.background, #background, body{  
background: rgb(198, 132, 128) }
```

If only the background color should be changed can be used:

```
.background{ background-color: rgb(198,  
132, 128) }
```

This example shows the color as background, it is applied via the CSS property "background".

To optimize and compress your CSS code, you can use our [online CSS compressor and optimizer](#) based on csstidy. If you want to create a linear or radial gradient as background or border, check our [CSS Gradient Generator](#).

Hey! You found this booklet interesting? Support Converting Colors with the new Membership Option!

The pro membership hides all ads, plus gives you double the colors in the color bucket, and more awesome pro features!

[Learn more, Memberships starting at \\$2.50/m!](#)

**Follow me
on Twitter!**

@ConvertingColor