

Converting Colors

HunterLab(54.8395, 11.1573,
15.1180)

Have a look what the booklet for
HunterLab(54.8395, 11.1573,
15.1180) contains.

HunterLab(54.8395, 11.1573, 15.1180)	3
<i>Conversions</i>	4
<i>Details</i>	6
<i>Harmonies</i>	12
<i>Previews</i>	24
<i>Color Blindness Simulation</i>	28
<i>CSS Examples</i>	31

Color

**HunterLab(54.8395, 11.1573,
15.1180)**

Conversions

Conversions Part 1

Format	Color
Hex	BB8A77
RGB	187, 138, 119
RGB Percent	73%, 54%, 47%
CMY	0.2667, 0.4588, 0.5333
CMYK	0.00, 0.26, 0.36, 0.27
HSL	17°, 33%, 60%
HSV	17°, 36%, 73%
XYZ	32.9118, 30.0737, 21.5230
YIQ	150.4850, 35.3030, 4.4790

Conversions

Conversions Part 2

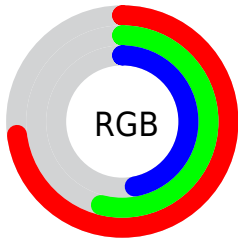
Format	Color
RYB	187, 145, 119
Decimal	12290679
CIELab	61.72, 16.12, 17.49
CIELCh	62, 23.784, 47.346
Yxy	30.0751, 0.3894, 0.3559
Android (android.graphics.Color)	4290480759 (0xFFBB8A77)
YUV	150.4850, -15.5221, 32.0237
Hunter-Lab	54.8395, 11.1573, 15.1180

Details

The HunterLab color **54.8395, 11.1573, 15.1180** is a dark color, and the websafe version is hex **CC9999**. A complement of this color would be **59.5935, -12.6939, -10.2754**, and the grayscale version is **55.4735, -2.9599, 3.0140**.

A 20% lighter version of the original color is **77.3774, 11.0958, 18.3519**, and **35.1282, 10.3905, 11.7663** is the 20% darker color. If you saturate the color by 10%, you get **51.0289, 15.9294, 17.6253**, and if you desaturate by 10%, it is **58.8887, 6.6818, 12.3094**.

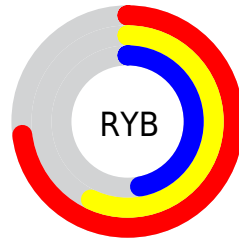
Distribution



Red (73%)

Green (54%)

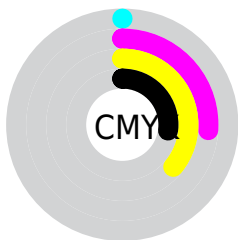
Blue (47%)



Red (73%)

Yellow (57%)

Blue (47%)

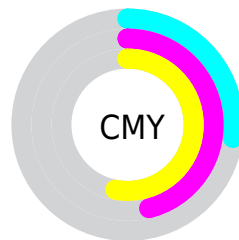


Cyan (0%)

Magenta (26%)

Yellow (36%)

Black (27%)



Cyan (27%)

Magenta (46%)

Yellow (53%)

Brightness & Saturation Gradients

These gradients show how the HunterLab color 54.8395, 11.1573, 15.1180 changes by changing the brightness by 10 percent. The first figure shows a shift by +10% for each color and the second figure -10%.

Similar to the brightness gradients but the following saturation gradients show a change of the HunterLab color 54.8395, 11.1573, 15.1180 by changing the saturation by 10% instead.

■ 54.8395, 11.1573,
15.1180

■ 54.8395, 11.1573,
15.1180

173.8547, 10.8829,
28.6239

■ 44.6045, 10.8566,
13.5280

■ 77.3182, 11.5105,
18.1972

■ 35.0987, 10.4629,
11.8818

■ 89.4853, 11.5839,
19.7047

■ 26.3846, 9.9584,
10.1542

■ 102.2311, 11.5960,
21.2001

■ 18.5419, 9.3220,
8.3032

115.5304, 11.5517,
22.6879

■ 11.6810, 8.5255,
7.2140

129.3611, 11.4550,
24.1717

■ 4.3624, 15.8644,
3.0537

143.7036, 11.3094,

0.0000, NaN, NaN

25.6542

0.0000, NaN, NaN

158.5401, 11.1178,
27.1377

0.0000, NaN, NaN

■ 54.8395, 11.1573,
15.1180

■ 54.8395, 11.1573,
15.1180

■ 51.0289, 15.9294,
17.6253

■ 58.8887, 6.6818,
12.3094

■ 47.4861, 20.9937,
19.7604

■ 63.1443, 2.5012,
9.2528

■ 44.2495, 26.3035,
21.4451

■ 67.5831, -1.4062,
5.9934

■ 41.3592, 31.7663,
22.5970

■ 72.1849, -5.0648,
2.5658

■ 38.8554, 37.2257,
23.1472

■ 76.9322, -8.5003,
-1.0030

■ 36.7722, 42.4505,
23.0872

■ 81.8106, -11.7374,
-4.6923

■ 36.1167, 44.2081,
23.0289

■ 86.8076, -14.7994,
-8.4859

■ 91.4180, -20.4950,
-5.3862

■ 94.5012, -25.0278,
-1.5638

Harmonies

Analogous

The Analogous color harmony consists of three colors that are next to each other on the color wheel.



54.8408, 17.2981, 8.3135



54.8395, 11.1573, 15.1180



54.8408, 1.4800, 18.3775

Triad

The Triadic color harmony groups three colors that are evenly spaced from another and form a triangle on the color wheel.



54.8408, 11.1550, 15.1188



54.8408, -20.9568, 6.9564



54.8408, 3.1053, -18.2304

Complementary

The Complementary color scheme is a pair of colors which are on the opposite of each other on the color wheel.



54.8395, 11.1573, 15.1180



59.5935, -12.6939, -10.2754

Split Complementary

Split-complementary colors differ from the complementary color scheme. The scheme consists of three colors, the original color and two neighbors of the complement color.



54.8408, -7.2032, -18.7784



54.8395, 11.1573, 15.1180



54.8408, -20.5924, -2.9381

Square

The Square scheme is like the rectangle color scheme, but the four colors are evenly spaced on the color wheel.



54.8408, 11.1550, 15.1188



54.8408, -16.7564, 14.2840



54.8408, -15.7213, -12.7684



54.8408, 12.4203, -11.3861

Rectangle

The Rectangle color scheme consists of four colors that form a rectangle on the color wheel.



54.8395, 11.1573, 15.1180



54.8408, -5.4401, 18.5840



54.8408, -15.7213, -12.7684



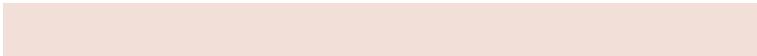
54.8408, -0.3721, -19.1967

Sweetspot

The Sweet Spot groups the original color and five complimentary colors.



54.8408, 11.1550, 15.1188



87.5561, 0.5922, 10.1517



51.5930, 28.1732, -10.7763



40.7091, 0.6128, 5.0417



97.7295, -5.2146, 5.3098



44.2712, -2.3622, 2.4053

Same Dimension

The Same Dimension uses a secret algorithm to generate beautiful new colors.



54.8408, 11.1550, 15.1188



69.1100, 20.2352, 23.0652



64.0883, -5.1699, 23.2540



31.5576, -0.1252, 3.3298



30.1569, 36.1757, 19.2158



6.8613, 4.7966, 4.3119

Inverse Universe

The Inverse Universe completely reimagines the original color for something new.



59.5935, -12.6939, -10.2754



76.7786, -18.5337, -18.0359



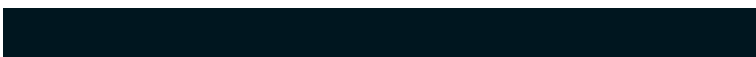
49.8005, 3.2562, -25.2284



32.1659, -3.1438, 0.0938



38.0627, -9.4526, -27.1697



8.2006, -2.8165, -4.1699

Previews

White Background



This preview shows how the HunterLab color 54.8395, 11.1573, 15.1180 looks on a white background.

Color Contrast Check

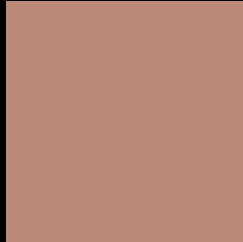
Large Text (above 18pt) WCAG AA × Fail

Any Text WCAG AA × Fail

Large Text (above 18pt) WCAG AAA × Fail

Any Text WCAG AAA × Fail

Black Background



This preview shows how the HunterLab color 54.8395, 11.1573, 15.1180 looks on a black background.

Color Contrast Check

Large Text (above 18pt) WCAG AA ✓ Pass

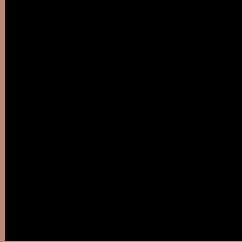
Any Text WCAG AA ✓ Pass

Large Text (above 18pt) WCAG AAA ✓ Pass

Any Text WCAG AAA ✓ Pass

If you want to check with other color combinations, try the [Color Contrast Checker](#).

HunterLab 54.8395, 11.1573, 15.1180 Background



This preview shows how black text looks on a background with the HunterLab color 54.8395, 11.1573, 15.1180.



This preview shows how white text looks on a background with the HunterLab color 54.8395, 11.1573,

Color Blindness Simulation

Color vision deficiency is a very complex topic, and I could not describe the different causes any better than Wikipedia does, so if you want to learn more, you should check out their [article about color blindness](#).

Dichromacy



Original Color

54.8395, 11.1573, 15.1180

Protanopia

54.9720, -3.7037, 13.2421

Deuteranopia

54.7281, 3.8608, 15.2225



Tritanopia

54.8103, 17.6464, 5.1053

Trichromacy



Original Color

54.8395, 11.1573, 15.1180

Protanomaly

54.8552, 1.6254, 13.9291

Deuteranomaly

54.7188, 6.6251, 15.2621

Tritanomaly

54.7031, 15.5211, 8.7339

Monochromacy



Original Color

54.8395, 11.1573, 15.1180

Achromatopsia

55.2257, -2.9467, 3.0005

Achromatomaly

54.9621, 1.3877, 7.5422

CSS Examples

Text

The CSS property to change the color of the text to HunterLab 54.8395, 11.1573, 15.1180 is called "color". The color property can be set on classes, ids or directly on the HTML element.

This example shows how text in the color `rgb(187, 138, 119)` looks like.

```
.text, #text, p{  
    color:rgb(187, 138, 119)  
}
```

If you want to add a text shadow in that color use the text-shadow property, you can generate a text shadow directly with our [CSS Text Shadow Generator](#).

Here you see how black text with a 4 pixel rgb(187, 138, 119) colored shadow looks like.

```
.shadow{ text-shadow: 4px 4px 2px rgb(187, 138, 119) }
```

Border

The CSS property to change the border of an element to HunterLab 54.8395, 11.1573, 15.1180 is called "border". The border property can be set on classes, ids or directly on the HTML element.

This example shows the color as border, it can be applied via the CSS property "border" or "border-color".

```
.border, #border, table{ border:4px solid rgb(187, 138, 119) }
```


If only the border color should be changed use the property `border-color`.

```
.border{ border-color:rgb(187, 138, 119) }
```

If you want to add a box shadow in that color use:

Here you see how a box with a 4 pixel `rgb(187, 138, 119)` colored shadow looks like.

```
.boxshadow{ -moz-box-shadow:4px 4px 4px  
4px rgb(187, 138, 119); -webkit-box-  
shadow:4px 4px 4px 4px rgb(187, 138, 119);  
box-shadow:4px 4px 4px 4px rgb(187, 138,  
119) }
```

Background

The CSS property to change the background color of an element to HunterLab 54.8395, 11.1573, 15.1180 is called "background". The background property can be set on classes, ids or directly on the HTML element.

```
.background, #background, body{  
background: rgb(187, 138, 119) }
```

If only the background color should be changed can be used:

```
.background{ background-color: rgb(187,  
138, 119) }
```

This example shows the color as background, it is applied via the CSS property "background".

To optimize and compress your CSS code, you can use our [online CSS compressor and optimizer](#) based on csstidy. If you want to create a linear or radial gradient as background or border, check our [CSS Gradient Generator](#).

Hey! You found this booklet interesting? Support Converting Colors with the new Membership Option!

The pro membership hides all ads, plus gives you double the colors in the color bucket, and more awesome pro features!

[Learn more, Memberships starting at \\$2.50/m!](#)

**Follow me
on Twitter!**

@ConvertingColor