

Converting Colors

HunterLab(54.8766, 46.2489,
-0.3249)

Have a look what the booklet for
HunterLab(54.8766, 46.2489,
-0.3249) contains.

HunterLab(54.8766, 46.2489, -0.3249)	3
<i>Conversions</i>	4
<i>Details</i>	6
<i>Harmonies</i>	12
<i>Previews</i>	24
<i>Color Blindness Simulation</i>	28
<i>CSS Examples</i>	31

Color

**HunterLab(54.8766, 46.2489,
-0.3249)**

Conversions

Conversions Part 1

Format	Color
Hex	E46E9E
RGB	228, 110, 158
RGB Percent	89%, 43%, 62%
CMY	0.1059, 0.5686, 0.3804
CMYK	0.00, 0.52, 0.31, 0.11
HSL	336°, 69%, 66%
HSV	336°, 52%, 89%
XYZ	43.7423, 30.1144, 35.8549
YIQ	150.7540, 54.9200, 39.9440

Conversions

Conversions Part 2

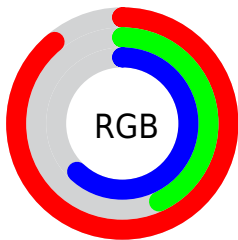
Format	Color
R _Y B	228, 110, 158
Decimal	14970526
CIE Lab	61.75, 50.89, -4.05
CIE LCh	62, 51.050, 355.447
Yxy	30.1159, 0.3987, 0.2745
Android (android.graphics.Color)	4293160606 (0xFFE46E9E)
YUV	150.7540, 3.5723, 67.7447
Hunter-Lab	54.8766, 46.2489, -0.3249

Details

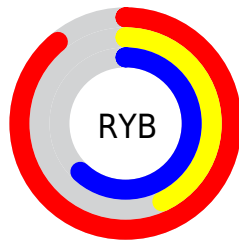
The HunterLab color $54.8766, 46.2489, -0.3249$ is a light color, and the websafe version is hex $CC6699$. A complement of this color would be $78.8021, -41.8301, 15.3345$, and the grayscale version is $55.5021, -2.9615, 3.0155$.

A 20% lighter version of the original color is $72.7835, 36.2224, -5.7972$, and $35.1068, 42.4400, -1.1160$ is the 20% darker color. If you saturate the color by 10%, you get $50.3707, 55.3378, 0.7249$, and if you desaturate by 10%, it is $60.1469, 36.4728, -0.5384$.

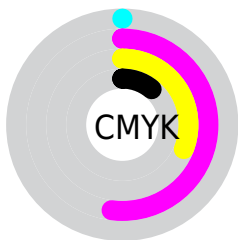
Distribution



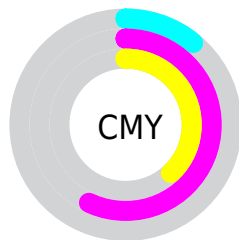
- Red (89%)
- Green (43%)
- Blue (62%)



- Red (89%)
- Yellow (43%)
- Blue (62%)



- Cyan (0%)
- Magenta (52%)
- Yellow (31%)
- Black (11%)



- Cyan (11%)
- Magenta (57%)
- Yellow (38%)

Brightness & Saturation Gradients

These gradients show how the HunterLab color 54.8766, 46.2489, -0.3249 changes by changing the brightness by 10 percent. The first figure shows a shift by +10% for each color and the second figure -10%.

Similar to the brightness gradients but the following saturation gradients show a change of the HunterLab color 54.8766, 46.2489, -0.3249 by changing the saturation by 10% instead.

■ 54.8766, 46.2489,
-0.3249

■ 54.8766, 46.2489,
-0.3249

173.9093, 57.4936,
4.6811

■ 44.6392, 44.5051,
-0.6743

■ 77.3598, 49.3965,
0.5214

■ 35.1308, 42.6566,
-0.9707

■ 89.5290, 50.8152,
1.0083

■ 26.4137, 40.7207,
-1.2059

■ 102.2768, 52.1373,
1.5342

■ 18.5678, 38.7660,
-1.3702

■ 115.5781, 53.3688,
2.0970

■ 11.7032, 37.0204,
-1.4495

129.4106, 54.5152,
2.6946

■ 4.4067, 55.9988,
-3.5719

143.7548, 55.5818,

0.0000, INF, NaN

3.3255

0.0000, NaN, NaN

158.5930, 56.5732,
3.9881

0.0000, NaN, NaN

■ 54.8766, 46.2489,
-0.3249

■ 54.8766, 46.2489,
-0.3249

■ 50.3707, 55.3378,
0.7249

■ 60.1469, 36.4728,
-0.5384

■ 46.7377, 63.1265,
2.6882

■ 66.0637, 26.4564,
-0.0477

■ 44.0641, 68.9022,
5.5378


■ 72.5264, 16.4575,
1.0163


■ 42.3681, 72.1251,
9.0808

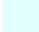
■ 79.4496, 6.6096,
2.5379

■ 41.5688, 73.0780,
12.2093

■ 86.7638, -3.0331,
4.4236

 94.4132, -12.4611,
6.6004

 97.5119, -14.2547,
3.4944

 97.5879, -13.8313,
2.4117

Harmonies

Analogous

The Analogous color harmony consists of three colors that are next to each other on the color wheel.



54.8780, 36.6891, -25.2819



54.8766, 46.2489, -0.3249



54.8780, 41.0130, 17.6870

Triad

The Triadic color harmony groups three colors that are evenly spaced from another and form a triangle on the color wheel.



54.8780, 46.2457, -0.3236



54.8780, -20.0416, 28.4068



54.8780, -25.0368, -41.8930

Complementary

The Complementary color scheme is a pair of colors which are on the opposite of each other on the color wheel.



54.8766, 46.2489, -0.3249



78.8021, -41.8301, 15.3345

Split Complementary

Split-complementary colors differ from the complementary color scheme. The scheme consists of three colors, the original color and two neighbors of the complement color.



54.8780, -36.3070, -17.4035



54.8766, 46.2489, -0.3249



54.8780, -33.7596, 21.3409

Square

The Square scheme is like the rectangle color scheme, but the four colors are evenly spaced on the color wheel.



54.8780, 46.2457, -0.3236



54.8780, 0.4871, 29.9548



54.8780, -39.2285, 6.1037



54.8780, -6.2676, -54.6099

Rectangle

The Rectangle color scheme consists of four colors that form a rectangle on the color wheel.



54.8766, 46.2489, -0.3249



54.8780, 30.2207, 24.7096



54.8780, -39.2285, 6.1037



54.8780, -29.7035, -34.3876

Sweetspot

The Sweet Spot groups the original color and five complimentary colors.



54.8780, 46.2457, -0.3236



86.7251, 12.3380, 2.0739



51.3020, 42.9007, -52.4643



39.3713, 6.7805, 0.7952

0.0000, NaN, NaN



46.2646, -2.4686, 2.5136

Same Dimension

The Same Dimension uses a secret algorithm to generate beautiful new colors.



54.8780, 46.2457, -0.3236



56.8959, 63.4366, 0.9325



55.6905, 35.5804, 19.2317



38.0325, 2.0542, 1.3793



31.6229, 55.6597, 8.7704



8.7006, 15.5115, 0.8825

Inverse Universe

The Inverse Universe completely reimagines the original color for something new.



54.8780, 46.2457, -0.3236



56.8959, 63.4366, 0.9325



76.9067, -28.8664, -9.7014



38.0325, 2.0542, 1.3793



31.6229, 55.6597, 8.7704



8.7006, 15.5115, 0.8825

Previews

White Background



This preview shows how the HunterLab color 54.8766, 46.2489, -0.3249 looks on a white background.

Color Contrast Check

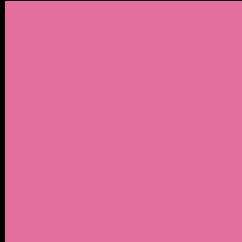
Large Text (above 18pt) WCAG AA × Fail

Any Text WCAG AA × Fail

Large Text (above 18pt) WCAG AAA × Fail

Any Text WCAG AAA × Fail

Black Background



This preview shows how the HunterLab color 54.8766, 46.2489, -0.3249 looks on a black background.

Color Contrast Check

Large Text (above 18pt) WCAG AA ✓ Pass

Any Text WCAG AA ✓ Pass

Large Text (above 18pt) WCAG AAA ✓ Pass

Any Text WCAG AAA ✓ Pass

If you want to check with other color combinations, try the [Color Contrast Checker](#).

HunterLab 54.8766, 46.2489, -0.3249 Background



This preview shows how black text looks on a background with the HunterLab color 54.8766, 46.2489, -0.3249.



This preview shows how white text looks on a background with the HunterLab color 54.8766, 46.2489, -0.3249.

-0.3249.

Color Blindness Simulation

Color vision deficiency is a very complex topic, and I could not describe the different causes any better than Wikipedia does, so if you want to learn more, you should check out their [article about color blindness](#).

Dichromacy



Original Color

54.8766, 46.2489, -0.3249

Protanopia

55.0527, 1.5402, -13.7121

Deuteranopia

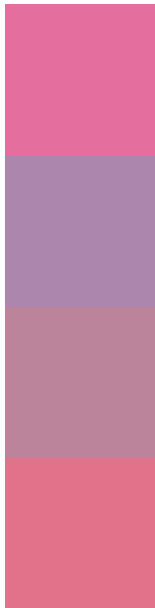
55.0494, 3.8490, 1.9944



Tritanopia

54.7531, 37.8406, 13.3913

Trichromacy



Original Color

54.8766, 46.2489, -0.3249

Protanomaly

53.8067, 16.3139, -10.1231

Deuteranomaly

54.2222, 18.9408, 0.3138

Tritanomaly

54.7809, 40.6509, 8.8525

Monochromacy



Original Color

54.8766, 46.2489, -0.3249

Achromatopsia

55.6299, -2.9683, 3.0225

Achromatomaly

54.3370, 14.0637, 0.3699

CSS Examples

Text

The CSS property to change the color of the text to HunterLab 54.8766, 46.2489, -0.3249 is called "color". The color property can be set on classes, ids or directly on the HTML element.

This example shows how text in the color `rgb(228, 110, 158)` looks like.

```
.text, #text, p{  
    color:rgb(228, 110, 158)  
}
```

If you want to add a text shadow in that color use the text-shadow property, you can generate a text shadow directly with our [CSS Text Shadow Generator](#).

Here you see how black text with a 4 pixel rgb(228, 110, 158) colored shadow looks like.

```
.shadow{ text-shadow: 4px 4px 2px rgb(228, 110, 158) }
```

Border

The CSS property to change the border of an element to HunterLab 54.8766, 46.2489, -0.3249 is called "border". The border property can be set on classes, ids or directly on the HTML element.

This example shows the color as border, it can be applied via the CSS property "border" or "border-color".

```
.border, #border, table{ border:4px solid rgb(228, 110, 158) }
```


If only the border color should be changed use the property border-color.

```
.border{ border-color:rgb(228, 110, 158) }
```

If you want to add a box shadow in that color use:

Here you see how a box with a 4 pixel rgb(228, 110, 158) colored shadow looks like.

```
.boxshadow{ -moz-box-shadow:4px 4px 4px  
4px rgb(228, 110, 158); -webkit-box-  
shadow:4px 4px 4px 4px rgb(228, 110, 158);  
box-shadow:4px 4px 4px 4px rgb(228, 110,  
158) }
```

Background

The CSS property to change the background color of an element to HunterLab 54.8766, 46.2489, -0.3249 is called "background". The background property can be set on classes, ids or directly on the HTML element.

```
.background, #background, body{  
background: rgb(228, 110, 158) }
```

If only the background color should be changed can be used:

```
.background{ background-color: rgb(228,  
110, 158) }
```

This example shows the color as background, it is applied via the CSS property "background".

To optimize and compress your CSS code, you can use our [online CSS compressor and optimizer](#) based on csstidy. If you want to create a linear or radial gradient as background or border, check our [CSS Gradient Generator](#).

Hey! You found this booklet interesting? Support Converting Colors with the new Membership Option!

The pro membership hides all ads, plus gives you double the colors in the color bucket, and more awesome pro features!

[Learn more, Memberships starting at \\$2.50/m!](#)

**Follow me
on Twitter!**

@ConvertingColor