

Converting Colors

HunterLab(54.9100, 13.2394,
2.8505)

Have a look what the booklet for
HunterLab(54.9100, 13.2394,
2.8505) contains.

HunterLab(54.9570, 13.1188, 2.9648)	3
<i>Conversions</i>	4
<i>Details</i>	6
<i>Harmonies</i>	12
<i>Previews</i>	24
<i>Color Blindness Simulation</i>	28
<i>CSS Examples</i>	31

Color

**HunterLab(54.9570, 13.1188,
2.9648)**

Conversions

Conversions Part 1

Format	Color
Hex	B58A96
RGB	181, 138, 150
RGB Percent	71%, 54%, 59%
CMY	0.2902, 0.4588, 0.4118
CMYK	0.00, 0.24, 0.17, 0.29
HSL	343°, 23%, 63%
HSV	343°, 24%, 71%
XYZ	33.6496, 30.2027, 32.9103
YIQ	152.2250, 21.7760, 12.8480

Conversions

Conversions Part 2

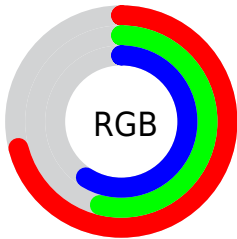
Format	Color
RYB	181, 138, 150
Decimal	11897494
CIELab	61.83, 18.24, -0.03
CIELCh	62, 18.242, 359.898
Yxy	30.2041, 0.3478, 0.3121
Android (android.graphics.Color)	4290087574 (0xFFB58A96)
YUV	152.2250, -1.0969, 25.2357
Hunter-Lab	54.9570, 13.1188, 2.9648

Details

The HunterLab color $54.9570, 13.1188, 2.9648$ is a light color, and the websafe version is hex $CC9999$. A complement of this color would be $64.2778, -17.6020, 4.6743$, and the grayscale version is $56.1250, -2.9947, 3.0494$.

A 20% lighter version of the original color is $77.5006, 13.3311, 4.2854$, and $35.2027, 11.8902, 2.0185$ is the 20% darker color. If you saturate the color by 10%, you get $50.0385, 20.4241, 3.1702$, and if you desaturate by 10%, it is $60.2346, 5.9476, 3.0899$.

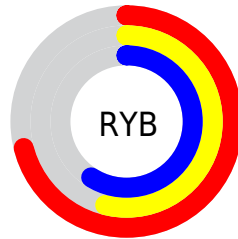
Distribution



Red (71%)

Green (54%)

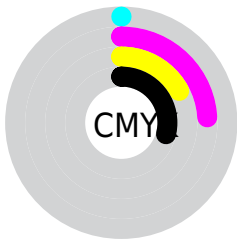
Blue (59%)



Red (71%)

Yellow (54%)

Blue (59%)

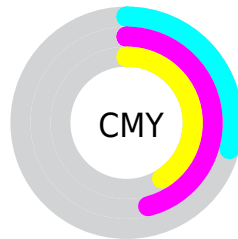


Cyan (0%)

Magenta (24%)

Yellow (17%)

Black (29%)



Cyan (29%)

Magenta (46%)

Yellow (41%)

Brightness & Saturation Gradients

These gradients show how the HunterLab color 54.9570, 13.1188, 2.9648 changes by changing the brightness by 10 percent. The first figure shows a shift by +10% for each color and the second figure -10%.

Similar to the brightness gradients but the following saturation gradients show a change of the HunterLab color 54.9570, 13.1188, 2.9648 by changing the saturation by 10% instead.

■ 54.9570, 13.1188,
2.9648

■ 54.9570, 13.1188,
2.9648

■ 174.0272, 13.6085,
9.4350

■ 44.7142, 12.7156,
2.4099

■ 77.4498, 13.6645,
4.1870

■ 35.1999, 12.2139,
1.8939

■ 89.6235, 13.8282,
4.8482

■ 26.4766, 11.5957,
1.4210

■ 102.3756, 13.9272,
5.5409

■ 18.6237, 10.8401,
0.9958

■ 115.6809, 13.9668,
6.2639

■ 11.7512, 9.9209,
0.6243

■ 129.5174, 13.9513,
7.0158

■ 4.5009, 17.4199,
0.2151

143.8655, 13.8843,

0.0000, NaN, NaN

7.7955

0.0000, NaN, NaN

158.7073, 13.7691,
8.6023

0.0000, NaN, NaN

■ 54.9570, 13.1188,
2.9648

■ 54.9570, 13.1188,
2.9648

■ 50.0385, 20.4241,
3.1702

■ 60.2346, 5.9476,
3.0899

■ 45.5422, 27.7732,
3.7666

■ 65.8131, -1.0471,
3.4851

■ 41.5489, 34.9710,
4.8152

■ 71.6503, -7.8639,
4.1031

■ 38.1474, 41.6903,
6.3529

■ 77.7116, -14.5155,
4.9049

■ 35.4250, 47.4633,
8.3620

■ 83.9690, -21.0215,
5.8593

■ 33.4462, 51.7595,
10.7376

■ 90.4002, -27.4030,
6.9416

■ 32.2217, 54.1842,
13.2767

■ 93.6566, -29.0649,
4.3457

■ 31.7151, 55.0529,
14.7585

■ 94.0879, -26.5977,
-1.7882

■ 94.1084, -26.4807,
-2.0791

Harmonies

Analogous

The Analogous color harmony consists of three colors that are next to each other on the color wheel.



54.9583, 10.8523, -4.7713



54.9570, 13.1188, 2.9648



54.9583, 10.8819, 9.7261

Triad

The Triadic color harmony groups three colors that are evenly spaced from another and form a triangle on the color wheel.



54.9583, 13.1169, 2.9658



54.9583, -10.3134, 14.1148



54.9583, -10.3577, -11.0560

Complementary

The Complementary color scheme is a pair of colors which are on the opposite of each other on the color wheel.



54.9570, 13.1188, 2.9648



64.2778, -17.6020, 4.6743

Split Complementary

Split-complementary colors differ from the complementary color scheme. The scheme consists of three colors, the original color and two neighbors of the complement color.



54.9583, -15.5095, -4.7205



54.9570, 13.1188, 2.9648



54.9583, -15.4850, 9.7648

Square

The Square scheme is like the rectangle color scheme, but the four colors are evenly spaced on the color wheel.



54.9583, 13.1169, 2.9658



54.9583, -2.9083, 15.5828



54.9583, -17.3335, 3.0172



54.9583, -2.9624, -13.5336

Rectangle

The Rectangle color scheme consists of four colors that form a rectangle on the color wheel.



54.9570, 13.1188, 2.9648



54.9583, 7.2094, 12.9480



54.9583, -17.3335, 3.0172



54.9583, -12.3938, -9.2666

Sweetspot

The Sweet Spot groups the original color and five complimentary colors.



54.9583, 13.1169, 2.9658



85.5243, 1.7190, 4.4499



54.7078, 14.3901, -13.4154



39.5570, 1.0518, 2.0532



95.4677, -5.0939, 5.1869



42.2927, -2.2566, 2.2978

Same Dimension

The Same Dimension uses a secret algorithm to generate beautiful new colors.



54.9583, 13.1169, 2.9658



69.7129, 23.1404, 4.0667



57.1193, 6.6912, 10.3535



29.2283, 1.3139, 1.5086



26.3523, 45.7824, 11.9646



4.7820, 8.5154, 0.5626

Inverse Universe

The Inverse Universe completely reimagines the original color for something new.



54.9583, 13.1169, 2.9658



69.7129, 23.1404, 4.0667



61.7455, -11.1658, -4.1261



29.2283, 1.3139, 1.5086



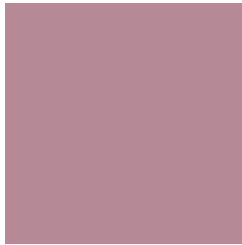
26.3523, 45.7824, 11.9646



4.7820, 8.5154, 0.5626

Previews

White Background



This preview shows how the HunterLab color 54.9570, 13.1188, 2.9648 looks on a white background.

Color Contrast Check

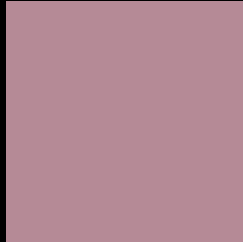
Large Text (above 18pt) WCAG AA × Fail

Any Text WCAG AA × Fail

Large Text (above 18pt) WCAG AAA × Fail

Any Text WCAG AAA × Fail

Black Background



This preview shows how the HunterLab color 54.9570, 13.1188, 2.9648 looks on a black background.

Color Contrast Check

Large Text (above 18pt) WCAG AA ✓ Pass

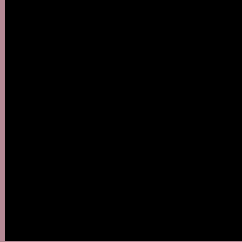
Any Text WCAG AA ✓ Pass

Large Text (above 18pt) WCAG AAA ✓ Pass

Any Text WCAG AAA ✓ Pass

If you want to check with other color combinations, try the [Color Contrast Checker](#).

HunterLab 54.9570, 13.1188, 2.9648 Background



This preview shows how black text looks on a background with the HunterLab color 54.9570, 13.1188, 2.9648.



This preview shows how white text looks on a background with the HunterLab color 54.9570, 13.1188,

2.9648.

Color Blindness Simulation

Color vision deficiency is a very complex topic, and I could not describe the different causes any better than Wikipedia does, so if you want to learn more, you should check out their [article about color blindness](#).

Dichromacy



Original Color

54.9570, 13.1188, 2.9648

Protanopia

55.1173, -1.4822, 0.1035

Deuteranopia

55.0575, 3.6998, 3.3713



Tritanopia

54.9278, 12.9673, 3.3814

Trichromacy



Original Color

54.9570, 13.1188, 2.9648

Protanomaly

54.9190, 3.5314, 0.8976

Deuteranomaly

54.8288, 7.1716, 3.1635

Tritanomaly

54.9278, 12.9673, 3.3814

Monochromacy



Original Color

54.9570, 13.1188, 2.9648

Achromatopsia

56.0347, -2.9899, 3.0445

Achromatomaly

55.5773, 2.7018, 3.0597

CSS Examples

Text

The CSS property to change the color of the text to HunterLab 54.9570, 13.1188, 2.9648 is called "color". The color property can be set on classes, ids or directly on the HTML element.

This example shows how text in the color `rgb(181, 138, 150)` looks like.

```
.text, #text, p{  
    color:rgb(181, 138, 150)  
}
```

If you want to add a text shadow in that color use the text-shadow property, you can generate a text shadow directly with our [CSS Text Shadow Generator](#).

Here you see how black text with a 4 pixel rgb(181, 138, 150) colored shadow looks like.

```
.shadow{ text-shadow: 4px 4px 2px rgb(181, 138, 150) }
```

Border

The CSS property to change the border of an element to HunterLab 54.9570, 13.1188, 2.9648 is called "border". The border property can be set on classes, ids or directly on the HTML element.

This example shows the color as border, it can be applied via the CSS property "border" or "border-color".

```
.border, #border, table{ border:4px solid rgb(181, 138, 150) }
```


If only the border color should be changed use the property `border-color`.

```
.border{ border-color:rgb(181, 138, 150) }
```

If you want to add a box shadow in that color use:

Here you see how a box with a 4 pixel `rgb(181, 138, 150)` colored shadow looks like.

```
.boxshadow{ -moz-box-shadow:4px 4px 4px  
4px rgb(181, 138, 150); -webkit-box-  
shadow:4px 4px 4px 4px rgb(181, 138, 150);  
box-shadow:4px 4px 4px 4px rgb(181, 138,  
150) }
```

Background

The CSS property to change the background color of an element to HunterLab 54.9570, 13.1188, 2.9648 is called "background". The background property can be set on classes, ids or directly on the HTML element.

```
.background, #background, body{  
background: rgb(181, 138, 150) }
```

If only the background color should be changed can be used:

```
.background{ background-color: rgb(181,  
138, 150) }
```

This example shows the color as background, it is applied via the CSS property "background".

To optimize and compress your CSS code, you can use our [online CSS compressor and optimizer](#) based on csstidy. If you want to create a linear or radial gradient as background or border, check our [CSS Gradient Generator](#).

Hey! You found this booklet interesting? Support Converting Colors with the new Membership Option!

The pro membership hides all ads, plus gives you double the colors in the color bucket, and more awesome pro features!

[Learn more, Memberships starting at \\$2.50/m!](#)

**Follow me
on Twitter!**

@ConvertingColor