

Converting Colors

HunterLab(54.9293, 55.1714,
13.5718)

Have a look what the booklet for
HunterLab(54.9293, 55.1714,
13.5718) contains.

HunterLab(54.9583, 55.1286, 13.5358)	3
<i>Conversions</i>	4
<i>Details</i>	6
<i>Harmonies</i>	12
<i>Previews</i>	24
<i>Color Blindness Simulation</i>	28
<i>CSS Examples</i>	31

Color

**HunterLab(54.9583, 55.1286,
13.5358)**

Conversions

Conversions Part 1

Format	Color
Hex	F7637E
RGB	247, 99, 126
RGB Percent	97%, 39%, 49%
CMY	0.0314, 0.6117, 0.5059
CMYK	0.00, 0.60, 0.49, 0.03
HSL	349°, 90%, 68%
HSV	349°, 60%, 97%
XYZ	46.5854, 30.2041, 23.1133
YIQ	146.3300, 79.5410, 39.7730

Conversions

Conversions Part 2

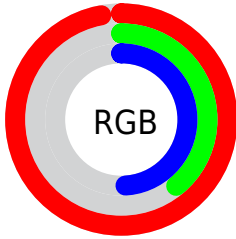
Format	Color
R _Y B	247, 99, 126
Decimal	16212862
CIE Lab	61.83, 58.74, 14.88
CIE LCh	62, 60.600, 14.219
Yxy	30.2058, 0.4663, 0.3023
Android (android.graphics.Color)	4294402942 (0xFFFF7637E)
YUV	146.3300, -10.0227, 88.2876
Hunter-Lab	54.9583, 55.1286, 13.5358

Details

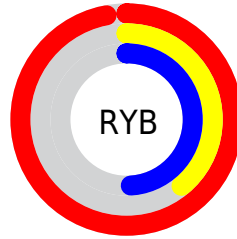
The HunterLab color **54.9583, 55.1286, 13.5358** is a light color, and the websafe version is hex **FF6699**. A complement of this color would be **86.2219, -44.6301, 5.7840**, and the grayscale version is **53.7644, -2.8687, 2.9211**.

A 20% lighter version of the original color is **69.2221, 36.1521, 7.2112**, and **35.2505, 51.3083, 10.8101** is the 20% darker color. If you saturate the color by 10%, you get **50.7440, 63.9293, 16.5172**, and if you desaturate by 10%, it is **60.1647, 45.2274, 10.9875**.

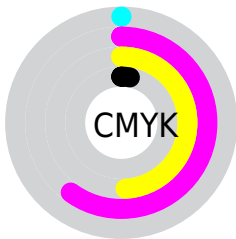
Distribution



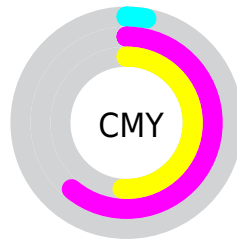
- Red (97%)
- Green (39%)
- Blue (49%)



- Red (97%)
- Yellow (39%)
- Blue (49%)



- Cyan (0%)
- Magenta (60%)
- Yellow (49%)
- Black (3%)



- Cyan (3%)
- Magenta (61%)
- Yellow (51%)

Brightness & Saturation Gradients

These gradients show how the HunterLab color 54.9583, 55.1286, 13.5358 changes by changing the brightness by 10 percent. The first figure shows a shift by +10% for each color and the second figure -10%.

Similar to the brightness gradients but the following saturation gradients show a change of the HunterLab color 54.9583, 55.1286, 13.5358 by changing the saturation by 10% instead.

■ 54.9583, 55.1286,
13.5358

■ 54.9583, 55.1286,
13.5358

174.0295, 68.6318,
25.9337

■ 44.7156, 53.1419,
12.1127

■ 77.4516, 58.7849,
16.3190

■ 35.2013, 51.0741,
10.6496

■ 89.6253, 60.4614,
17.6925

■ 26.4778, 48.9647,
9.1268

■ 102.3775, 62.0401,
19.0613

■ 18.6248, 46.9345,
7.5096

■ 115.6829, 63.5257,
20.4289

■ 11.7521, 45.3473,
6.2815

129.5195, 64.9230,
21.7981

■ 4.5027, 67.2829,
3.1519

143.8676, 66.2369,

0.0000, INF, NaN

23.1709

0.0000, NaN, NaN

158.7095, 67.4718,
24.5490

0.0000, NaN, NaN

■ 54.9583, 55.1286,
13.5358

■ 54.9583, 55.1286,
13.5358

■ 50.7440, 63.9293,
16.5172

■ 60.1647, 45.2274,
10.9875

■ 47.6315, 70.8389,
19.7335

■ 66.2192, 34.8823,
8.9449

■ 45.6639, 75.1560,
22.8780

■ 72.9884, 24.5021,
7.4025

■ 44.6875, 76.9305,
25.5596

■ 80.3549, 14.3072,
6.3120

■ 44.6810, 76.9424,
25.5782

■ 88.2224, 4.3908,
5.6110

96.5138, -5.2261,
5.2379

99.2543, -7.9397,
4.5066

Harmonies

Analogous

The Analogous color harmony consists of three colors that are next to each other on the color wheel.



54.9598, 54.6323, -11.7527



54.9583, 55.1286, 13.5358



54.9598, 38.1694, 27.0648

Triad

The Triadic color harmony groups three colors that are evenly spaced from another and form a triangle on the color wheel.



54.9598, 55.1244, 13.5370



54.9598, -33.9221, 27.4944



54.9598, -16.0140, -66.2779

Complementary

The Complementary color scheme is a pair of colors which are on the opposite of each other on the color wheel.



54.9583, 55.1286, 13.5358



86.2219, -44.6301, 5.7840

Split Complementary

Split-complementary colors differ from the complementary color scheme. The scheme consists of three colors, the original color and two neighbors of the complement color.



54.9598, -34.6637, -42.1968



54.9583, 55.1286, 13.5358



54.9598, -43.5982, 14.5247

Square

The Square scheme is like the rectangle color scheme, but the four colors are evenly spaced on the color wheel.



54.9598, 55.1244, 13.5370



54.9598, -14.8042, 32.1659



54.9598, -43.8413, -10.1729



54.9598, 10.0346, -66.9779

Rectangle

The Rectangle color scheme consists of four colors that form a rectangle on the color wheel.



54.9583, 55.1286, 13.5358



54.9598, 20.8140, 31.0598



54.9598, -43.8413, -10.1729



54.9598, -23.2316, -60.2782

Sweetspot

The Sweet Spot groups the original color and five complimentary colors.



54.9598, 55.1244, 13.5370



84.8200, 12.8733, 6.3790



55.5300, 65.8814, -58.5830



38.1716, 7.3612, 3.0727

0.0000, NaN, NaN



46.2646, -2.4686, 2.5136

Same Dimension

The Same Dimension uses a secret algorithm to generate beautiful new colors.



54.9598, 55.1244, 13.5370



51.8026, 68.0671, 17.8509



64.1822, 29.1562, 29.1526



40.6594, 1.8212, 2.5653



32.5163, 56.0395, 18.2647



9.7088, 16.8684, 4.4001

Inverse Universe

The Inverse Universe completely reimagines the original color for something new.



54.9598, 55.1244, 13.5370



51.8026, 68.0671, 17.8509



71.2320, -17.8529, -29.6626



40.6594, 1.8212, 2.5653



32.5163, 56.0395, 18.2647



9.7088, 16.8684, 4.4001

Previews

White Background



This preview shows how the HunterLab color 54.9583, 55.1286, 13.5358 looks on a white background.

Color Contrast Check

Large Text (above 18pt) WCAG AA × Fail

Any Text WCAG AA × Fail

Large Text (above 18pt) WCAG AAA × Fail

Any Text WCAG AAA × Fail

Black Background



This preview shows how the HunterLab color 54.9583, 55.1286, 13.5358 looks on a black background.

Color Contrast Check

Large Text (above 18pt) WCAG AA ✓ Pass

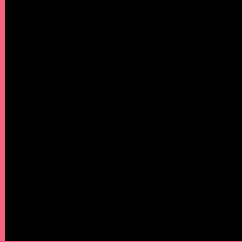
Any Text WCAG AA ✓ Pass

Large Text (above 18pt) WCAG AAA ✓ Pass

Any Text WCAG AAA ✓ Pass

If you want to check with other color combinations, try the [Color Contrast Checker](#).

HunterLab 54.9583, 55.1286, 13.5358 Background



This preview shows how black text looks on a background with the HunterLab color 54.9583, 55.1286, 13.5358.



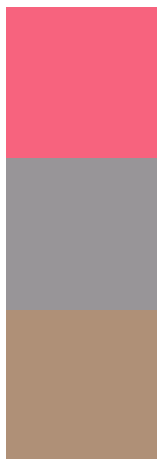
This preview shows how white text looks on a background with the HunterLab color 54.9583, 55.1286,

13.5358.

Color Blindness Simulation

Color vision deficiency is a very complex topic, and I could not describe the different causes any better than Wikipedia does, so if you want to learn more, you should check out their [article about color blindness](#).

Dichromacy



Original Color

54.9583, 55.1286, 13.5358

Protanopia

55.1700, -1.5422, 2.0444

Deuteranopia

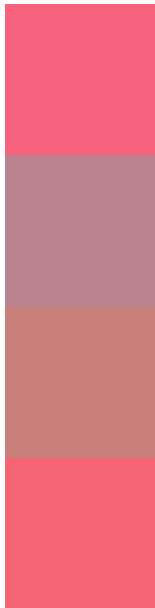
55.1293, 3.8393, 15.2677



Tritanopia

54.9543, 51.6787, 19.1578

Trichromacy



Original Color

54.9583, 55.1286, 13.5358

Protanomaly

53.6475, 17.8059, 4.6493

Deuteranomaly

54.0934, 21.8851, 13.5341

Tritanomaly

54.8981, 52.6973, 17.2332

Monochromacy



Original Color

54.9583, 55.1286, 13.5358

Achromatopsia

53.6135, -2.8607, 2.9129

Achromatomaly

52.5660, 16.8049, 5.1346

CSS Examples

Text

The CSS property to change the color of the text to HunterLab 54.9583, 55.1286, 13.5358 is called "color". The color property can be set on classes, ids or directly on the HTML element.

This example shows how text in the color `rgb(247, 99, 126)` looks like.

```
.text, #text, p{  
    color:rgb(247, 99, 126)  
}
```

If you want to add a text shadow in that color use the text-shadow property, you can generate a text shadow directly with our [CSS Text Shadow Generator](#).

Here you see how black text with a 4 pixel rgb(247, 99, 126) colored shadow looks like.

```
.shadow{ text-shadow: 4px 4px 2px rgb(247, 99, 126) }
```

Border

The CSS property to change the border of an element to HunterLab 54.9583, 55.1286, 13.5358 is called "border". The border property can be set on classes, ids or directly on the HTML element.

This example shows the color as border, it can be applied via the CSS property "border" or "border-color".

```
.border, #border, table{ border:4px solid rgb(247, 99, 126) }
```


If only the border color should be changed use the property `border-color`.

```
.border{ border-color:rgb(247, 99, 126) }
```

If you want to add a box shadow in that color use:

Here you see how a box with a 4 pixel `rgb(247, 99, 126)` colored shadow looks like.

```
.boxshadow{ -moz-box-shadow:4px 4px 4px  
4px rgb(247, 99, 126); -webkit-box-  
shadow:4px 4px 4px 4px rgb(247, 99, 126);  
box-shadow:4px 4px 4px 4px rgb(247, 99,  
126) }
```

Background

The CSS property to change the background color of an element to HunterLab 54.9583, 55.1286, 13.5358 is called "background". The background property can be set on classes, ids or directly on the HTML element.

```
.background, #background, body{  
background: rgb(247, 99, 126) }
```

If only the background color should be changed can be used:

```
.background{ background-color: rgb(247, 99,  
126) }
```

This example shows the color as background, it is applied via the CSS property "background".

To optimize and compress your CSS code, you can use our [online CSS compressor and optimizer](#) based on csstidy. If you want to create a linear or radial gradient as background or border, check our [CSS Gradient Generator](#).

Hey! You found this booklet interesting? Support Converting Colors with the new Membership Option!

The pro membership hides all ads, plus gives you double the colors in the color bucket, and more awesome pro features!

[Learn more, Memberships starting at \\$2.50/m!](#)

**Follow me
on Twitter!**

@ConvertingColor