

Converting Colors

HunterLab(54.9695, 13.2287,
12.8135)

Have a look what the booklet for
HunterLab(54.9695, 13.2287,
12.8135) contains.

HunterLab(54.9695, 13.2287, 12.8135)	3
<i>Conversions</i>	4
<i>Details</i>	6
<i>Harmonies</i>	12
<i>Previews</i>	24
<i>Color Blindness Simulation</i>	28
<i>CSS Examples</i>	31

Color

**HunterLab(54.9695, 13.2287,
12.8135)**

Conversions

Conversions Part 1

Format	Color
Hex	BD897E
RGB	189, 137, 126
RGB Percent	74%, 54%, 49%
CMY	0.2588, 0.4627, 0.5059
CMYK	0.00, 0.28, 0.33, 0.26
HSL	10°, 32%, 62%
HSV	10°, 33%, 74%
XYZ	33.6978, 30.2165, 23.7949
YIQ	151.2940, 34.5230, 7.6030

Conversions

Conversions Part 2

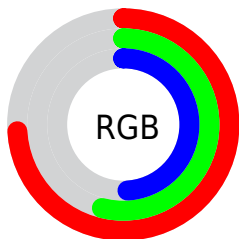
Format	Color
R _Y B	189, 139, 126
Decimal	12421502
CIE Lab	61.84, 18.36, 13.74
CIE LCh	62, 22.932, 36.813
Yxy	30.2179, 0.3842, 0.3445
Android (android.graphics.Color)	4290611582 (0xFFBD897E)
YUV	151.2940, -12.4699, 33.0682
Hunter-Lab	54.9695, 13.2287, 12.8135

Details

The HunterLab color **54.9695, 13.2287, 12.8135** is a dark color, and the websafe version is hex **CC9999**. A complement of this color would be **63.2053, -15.4099, -6.4848**, and the grayscale version is **55.7889, -2.9768, 3.0311**.

A 20% lighter version of the original color is **77.5301, 13.4526, 15.3949**, and **35.2428, 12.1671, 10.1175** is the 20% darker color. If you saturate the color by 10%, you get **50.6519, 18.9566, 15.2286**, and if you desaturate by 10%, it is **59.5928, 7.7856, 10.2450**.

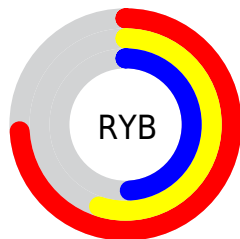
Distribution



Red (74%)

Green (54%)

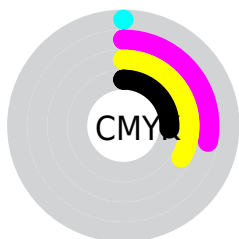
Blue (49%)



Red (74%)

Yellow (55%)

Blue (49%)

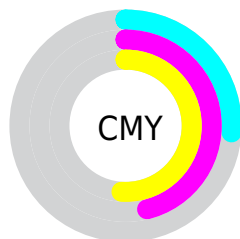


Cyan (0%)

Magenta (28%)

Yellow (33%)

Black (26%)



Cyan (26%)

Magenta (46%)

Yellow (51%)

Brightness & Saturation Gradients

These gradients show how the HunterLab color 54.9695, 13.2287, 12.8135 changes by changing the brightness by 10 percent. The first figure shows a shift by +10% for each color and the second figure -10%.

Similar to the brightness gradients but the following saturation gradients show a change of the HunterLab color 54.9695, 13.2287, 12.8135 by changing the saturation by 10% instead.

■ 54.9695, 13.2287,
12.8135

■ 54.9695, 13.2287,
12.8135

174.0456, 13.7597,
24.7314

■ 44.7259, 12.8195,
11.4618

■ 77.4639, 13.7845,
15.4686

■ 35.2108, 12.3120,
10.0775

■ 89.6383, 13.9531,
16.7842

■ 26.4865, 11.6877,
8.6425

■ 102.3910, 14.0569,
18.0982

■ 18.6325, 10.9257,
7.1259

115.6970, 14.1010,
19.4138

■ 11.7587, 10.0000,
5.8777

129.5342, 14.0899,
20.7333

■ 4.5155, 17.4757,
3.1608

143.8828, 14.0273,

0.0000, NaN, NaN

22.0585

0.0000, NaN, NaN

158.7252, 13.9163,
23.3908

0.0000, NaN, NaN

■ 54.9695, 13.2287,
12.8135

■ 54.9695, 13.2287,
12.8135

■ 50.6519, 18.9566,
15.2286

■ 59.5928, 7.7856,
10.2450

■ 46.6852, 24.9386,
17.4231

■ 64.4764, 2.6364,
7.5660

■ 43.1275, 31.0770,
19.3113

■ 69.5872, -2.2383,
4.8085

■ 40.0399, 37.1926,
20.7877

■ 74.8969, -6.8642,
1.9932

■ 37.4826, 43.0066,
21.7438

■ 80.3822, -11.2696,
-0.8662

■ 35.5031, 48.1542,
22.1063

■ 86.0241, -15.4824,
-3.7608

■ 34.5068, 50.9879,
22.1556

■ 91.6897, -20.1875,
-5.0316

■ 94.6355, -24.5326,
-1.3881

Harmonies

Analogous

The Analogous color harmony consists of three colors that are next to each other on the color wheel.



54.9708, 17.3693, 5.1068



54.9695, 13.2287, 12.8135



54.9708, 4.7976, 17.2248

Triad

The Triadic color harmony groups three colors that are evenly spaced from another and form a triangle on the color wheel.



54.9708, 13.2264, 12.8144



54.9708, -19.4328, 9.6835



54.9708, -0.6491, -18.3079

Complementary

The Complementary color scheme is a pair of colors which are on the opposite of each other on the color wheel.



54.9695, 13.2287, 12.8135



63.2053, -15.4099, -6.4848

Split Complementary

Split-complementary colors differ from the complementary color scheme. The scheme consists of three colors, the original color and two neighbors of the complement color.



54.9708, -10.2644, -16.4931



54.9695, 13.2287, 12.8135



54.9708, -20.6642, 0.7902

Square

The Square scheme is like the rectangle color scheme, but the four colors are evenly spaced on the color wheel.



54.9708, 13.2264, 12.8144



54.9708, -13.9316, 15.6543



54.9708, -17.4231, -9.0619



54.9708, 8.9980, -13.6543

Rectangle

The Rectangle color scheme consists of four colors that form a rectangle on the color wheel.



54.9695, 13.2287, 12.8135



54.9708, -1.8689, 18.2325



54.9708, -17.4231, -9.0619



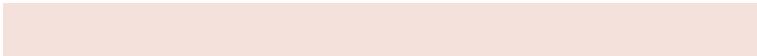
54.9708, -3.9951, -18.4453

Sweetspot

The Sweet Spot groups the original color and five complimentary colors.



54.9708, 13.2264, 12.8144



88.4268, 1.4200, 8.9644



53.8287, 26.9476, -13.0426



40.5651, 1.0894, 4.3961



97.7295, -5.2146, 5.3098



44.2712, -2.3622, 2.4053

Same Dimension

The Same Dimension uses a secret algorithm to generate beautiful new colors.



54.9708, 13.2264, 12.8144



69.2996, 23.2678, 19.5349



63.5064, -2.2061, 20.6653



31.3027, 0.3127, 3.0492



28.4457, 41.3747, 18.2525



6.3337, 6.1387, 4.0103

Inverse Universe

The Inverse Universe completely reimagines the original color for something new.



63.2053, -15.4099, -6.4848



82.5181, -23.0056, -11.5098



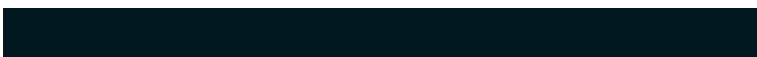
53.8307, -0.6161, -19.8673



32.4319, -3.5723, 0.4115



43.0891, -16.4675, -18.3091



8.9613, -3.8267, -2.9401

Previews

White Background



This preview shows how the HunterLab color 54.9695, 13.2287, 12.8135 looks on a white background.

Color Contrast Check

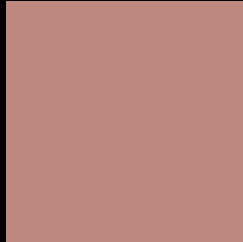
Large Text (above 18pt) WCAG AA × Fail

Any Text WCAG AA × Fail

Large Text (above 18pt) WCAG AAA × Fail

Any Text WCAG AAA × Fail

Black Background



This preview shows how the HunterLab color 54.9695, 13.2287, 12.8135 looks on a black background.

Color Contrast Check

Large Text (above 18pt) WCAG AA ✓ Pass

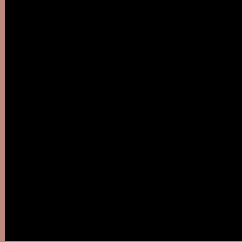
Any Text WCAG AA ✓ Pass

Large Text (above 18pt) WCAG AAA ✓ Pass

Any Text WCAG AAA ✓ Pass

If you want to check with other color combinations, try the [Color Contrast Checker](#).

HunterLab 54.9695, 13.2287, 12.8135 Background



This preview shows how black text looks on a background with the HunterLab color 54.9695, 13.2287, 12.8135.



This preview shows how white text looks on a background with the HunterLab color 54.9695, 13.2287,

Color Blindness Simulation

Color vision deficiency is a very complex topic, and I could not describe the different causes any better than Wikipedia does, so if you want to learn more, you should check out their [article about color blindness](#).

Dichromacy



Original Color

54.9695, 13.2287, 12.8135

Protanopia

54.9807, -3.2902, 10.2805

Deuteranopia

55.0558, 3.8628, 13.0986



Tritanopia

54.9280, 18.0114, 5.2464

Trichromacy



Original Color

54.9695, 13.2287, 12.8135

Protanomaly

54.9430, 2.2991, 11.1059

Deuteranomaly

54.8763, 7.4596, 12.9826

Tritanomaly

54.8726, 16.1574, 8.1147

Monochromacy



Original Color

54.9695, 13.2287, 12.8135

Achromatopsia

55.6299, -2.9683, 3.0225

Achromatomaly

55.2359, 2.4772, 6.6100

CSS Examples

Text

The CSS property to change the color of the text to HunterLab 54.9695, 13.2287, 12.8135 is called "color". The color property can be set on classes, ids or directly on the HTML element.

This example shows how text in the color `rgb(189, 137, 126)` looks like.

```
.text, #text, p{  
    color:rgb(189, 137, 126)  
}
```

If you want to add a text shadow in that color use the text-shadow property, you can generate a text shadow directly with our [CSS Text Shadow Generator](#).

Here you see how black text with a 4 pixel rgb(189, 137, 126) colored shadow looks like.

```
.shadow{ text-shadow: 4px 4px 2px rgb(189, 137, 126) }
```

Border

The CSS property to change the border of an element to HunterLab 54.9695, 13.2287, 12.8135 is called "border". The border property can be set on classes, ids or directly on the HTML element.

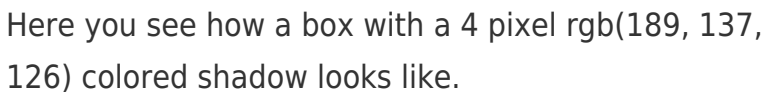
This example shows the color as border, it can be applied via the CSS property "border" or "border-color".

```
.border, #border, table{ border:4px solid rgb(189, 137, 126) }
```


If only the border color should be changed use the property `border-color`.

```
.border{ border-color:rgb(189, 137, 126) }
```

If you want to add a box shadow in that color use:



Here you see how a box with a 4 pixel `rgb(189, 137, 126)` colored shadow looks like.

```
.boxshadow{ -moz-box-shadow:4px 4px 4px 4px rgb(189, 137, 126); -webkit-box-shadow:4px 4px 4px 4px rgb(189, 137, 126); box-shadow:4px 4px 4px 4px rgb(189, 137, 126) }
```

Background

The CSS property to change the background color of an element to HunterLab 54.9695, 13.2287, 12.8135 is called "background". The background property can be set on classes, ids or directly on the HTML element.

```
.background, #background, body{  
background: rgb(189, 137, 126) }
```

If only the background color should be changed can be used:

```
.background{ background-color: rgb(189,  
137, 126) }
```

This example shows the color as background, it is applied via the CSS property "background".

To optimize and compress your CSS code, you can use our [online CSS compressor and optimizer](#) based on csstidy. If you want to create a linear or radial gradient as background or border, check our [CSS Gradient Generator](#).

Hey! You found this booklet interesting? Support Converting Colors with the new Membership Option!

The pro membership hides all ads, plus gives you double the colors in the color bucket, and more awesome pro features!

[Learn more, Memberships starting at \\$2.50/m!](#)

**Follow me
on Twitter!**

@ConvertingColor