

Converting Colors

HunterLab(54.9909, 12.1030,
7.9293)

Have a look what the booklet for
HunterLab(54.9909, 12.1030,
7.9293) contains.

HunterLab(54.8710, 12.2289, 7.6322)	3
<i>Conversions</i>	4
<i>Details</i>	6
<i>Harmonies</i>	12
<i>Previews</i>	24
<i>Color Blindness Simulation</i>	28
<i>CSS Examples</i>	31

Color

**HunterLab(54.8710, 12.2289,
7.6322)**

Conversions

Conversions Part 1

Format	Color
Hex	B78A8B
RGB	183, 138, 139
RGB Percent	72%, 54%, 55%
CMY	0.2824, 0.4588, 0.4549
CMYK	0.00, 0.25, 0.24, 0.28
HSL	359°, 24%, 63%
HSV	359°, 25%, 72%
XYZ	33.2771, 30.1083, 28.4836
YIQ	151.5690, 26.4990, 9.8510

Conversions

Conversions Part 2

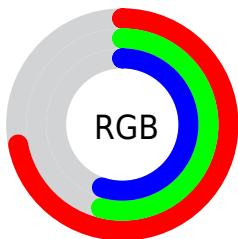
Format	Color
R _Y B	183, 138, 139
Decimal	12028555
CIE Lab	61.75, 17.28, 6.14
CIE LCh	62, 18.339, 19.552
Yxy	30.1097, 0.3622, 0.3277
Android (android.graphics.Color)	4290218635 (0xFFB78A8B)
YUV	151.5690, -6.1965, 27.5650
Hunter-Lab	54.8710, 12.2289, 7.6322

Details

The HunterLab color $54.8710, 12.2289, 7.6322$ is a light color, and the websafe version is hex $CC9999$. A complement of this color would be $65.3057, -16.2704, -0.2250$, and the grayscale version is $55.8779, -2.9815, 3.0360$.

A 20% lighter version of the original color is $77.4792, 12.5467, 9.8002$, and $35.1679, 11.2721, 5.9338$ is the 20% darker color. If you saturate the color by 10%, you get $49.8120, 19.1406, 9.4573$, and if you desaturate by 10%, it is $60.3136, 5.5668, 5.9514$.

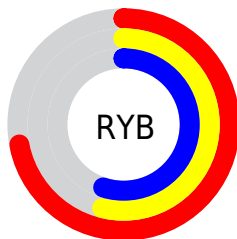
Distribution



Red (72%)

Green (54%)

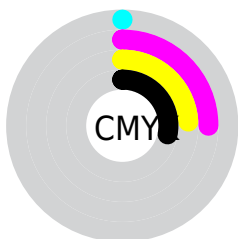
Blue (55%)



Red (72%)

Yellow (54%)

Blue (55%)

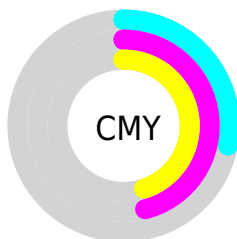


Cyan (0%)

Magenta (25%)

Yellow (24%)

Black (28%)



Cyan (28%)

Magenta (46%)

Yellow (45%)

Brightness & Saturation Gradients

These gradients show how the HunterLab color 54.8710, 12.2289, 7.6322 changes by changing the brightness by 10 percent. The first figure shows a shift by +10% for each color and the second figure -10%.

Similar to the brightness gradients but the following saturation gradients show a change of the HunterLab color 54.8710, 12.2289, 7.6322 by changing the saturation by 10% instead.

■ 54.8710, 12.2289,
7.6322

■ 54.8710, 12.2289,
7.6322

173.9009, 12.3763,
16.4623

■ 44.6339, 11.8715,
6.7371

■ 77.3534, 12.6886,
9.4700

■ 35.1258, 11.4179,
5.8522

■ 89.5223, 12.8118,
10.4138

■ 26.4092, 10.8503,
4.9734

■ 102.2698, 12.8719,
11.3755

■ 18.5638, 10.1474,
4.0912

115.5707, 12.8739,
12.3556

■ 11.6998, 9.2822,
3.1867

129.4030, 12.8220,
13.3543

■ 4.3999, 16.8798,
3.0800

143.7469, 12.7197,

0.0000, NaN, NaN

14.3717

0.0000, NaN, NaN

158.5849, 12.5703,
15.4077

0.0000, NaN, NaN

■ 54.8710, 12.2289,
7.6322

■ 54.8710, 12.2289,
7.6322

■ 49.8120, 19.1406,
9.4573

■ 60.3136, 5.5668,
5.9514

■ 45.2072, 26.2344,
11.4135

■ 66.0761, -0.8251,
4.4059

■ 41.1470, 33.3310,
13.4591

■ 72.1119, -6.9648,
2.9829

■ 37.7304, 40.1029,
15.5023

■ 78.3835, -12.8803,
1.6665

■ 35.0531, 46.0579,
17.3918

■ 84.8607, -18.6032,
0.4415

■ 33.1811, 50.6240,
18.9372

■ 91.5197, -24.1635,
-0.7062

■ 32.1144, 53.3727,
19.9732

■ 94.2376, -26.0019,
-1.9093

■ 31.7430, 54.3889,
20.2947

Harmonies

Analogous

The Analogous color harmony consists of three colors that are next to each other on the color wheel.



54.8723, 12.9227, 0.2845



54.8710, 12.2289, 7.6322



54.8723, 7.3406, 12.9389

Triad

The Triadic color harmony groups three colors that are evenly spaced from another and form a triangle on the color wheel.



54.8723, 12.2268, 7.6331



54.8723, -14.0839, 11.6065



54.8723, -5.6748, -13.3208

Complementary

The Complementary color scheme is a pair of colors which are on the opposite of each other on the color wheel.



54.8710, 12.2289, 7.6322



65.3057, -16.2704, -0.2250

Split Complementary

Split-complementary colors differ from the complementary color scheme. The scheme consists of three colors, the original color and two neighbors of the complement color.



54.8723, -12.4981, -9.2690



54.8710, 12.2289, 7.6322



54.8723, -17.1665, 5.5584

Square

The Square scheme is like the rectangle color scheme, but the four colors are evenly spaced on the color wheel.



54.8723, 12.2268, 7.6331



54.8723, -7.9526, 14.9969



54.8723, -16.6030, -2.1050



54.8723, 2.2784, -12.5557

Rectangle

The Rectangle color scheme consists of four colors that form a rectangle on the color wheel.



54.8710, 12.2289, 7.6322



54.8723, 2.5112, 14.9379



54.8723, -16.6030, -2.1050



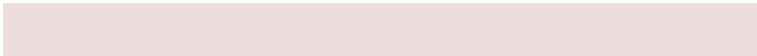
54.8723, -8.1687, -12.4567

Sweetspot

The Sweet Spot groups the original color and five complimentary colors.



54.8723, 12.2268, 7.6331



86.4417, 1.0249, 6.4029



56.1084, 18.9156, -12.4354



40.4067, 0.7188, 3.0659



96.5975, -5.1542, 5.2483



43.2801, -2.3093, 2.3515

Same Dimension

The Same Dimension uses a secret algorithm to generate beautiful new colors.



54.8723, 12.2268, 7.6331



69.3658, 21.7919, 11.6346



60.5802, 1.5760, 13.8225



30.0256, 1.0337, 2.4305



26.5154, 45.4369, 16.9129



4.9894, 8.5718, 3.0126

Inverse Universe

The Inverse Universe completely reimagines the original color for something new.



54.8723, 12.2268, 7.6331



69.3658, 21.7919, 11.6346



58.8762, -6.1677, -8.9436



30.0256, 1.0337, 2.4305



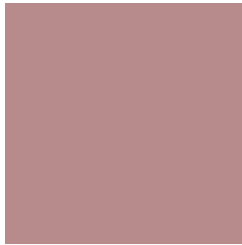
26.5154, 45.4369, 16.9129



4.9894, 8.5718, 3.0126

Previews

White Background



This preview shows how the HunterLab color 54.8710, 12.2289, 7.6322 looks on a white background.

Color Contrast Check

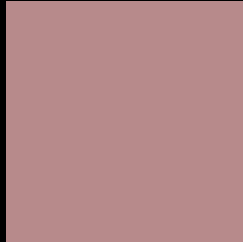
Large Text (above 18pt) WCAG AA × Fail

Any Text WCAG AA × Fail

Large Text (above 18pt) WCAG AAA × Fail

Any Text WCAG AAA × Fail

Black Background



This preview shows how the HunterLab color 54.8710, 12.2289, 7.6322 looks on a black background.

Color Contrast Check

Large Text (above 18pt) WCAG AA ✓ Pass

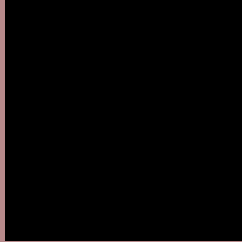
Any Text WCAG AA ✓ Pass

Large Text (above 18pt) WCAG AAA ✓ Pass

Any Text WCAG AAA ✓ Pass

If you want to check with other color combinations, try the [Color Contrast Checker](#).

HunterLab 54.8710, 12.2289, 7.6322 Background



This preview shows how black text looks on a background with the HunterLab color 54.8710, 12.2289, 7.6322.



This preview shows how white text looks on a background with the HunterLab color 54.8710, 12.2289, 7.6322.

7.6322.

Color Blindness Simulation

Color vision deficiency is a very complex topic, and I could not describe the different causes any better than Wikipedia does, so if you want to learn more, you should check out their [article about color blindness](#).

Dichromacy



Original Color

54.8710, 12.2289, 7.6322

Protanopia

55.0559, -2.3410, 5.0360

Deuteranopia

54.8692, 3.8815, 7.8961



Tritanopia

54.9438, 14.2392, 4.3181

Trichromacy



Original Color

54.8710, 12.2289, 7.6322

Protanomaly

54.8876, 2.7884, 5.7994

Deuteranomaly

54.8318, 6.5705, 7.9023

Tritanomaly

54.8592, 13.8015, 5.5289

Monochromacy



Original Color

54.8710, 12.2289, 7.6322

Achromatopsia

56.0347, -2.9899, 3.0445

Achromatomaly

55.4622, 2.0824, 4.7031

CSS Examples

Text

The CSS property to change the color of the text to HunterLab 54.8710, 12.2289, 7.6322 is called "color". The color property can be set on classes, ids or directly on the HTML element.

This example shows how text in the color `rgb(183, 138, 139)` looks like.

```
.text, #text, p{  
    color:rgb(183, 138, 139)  
}
```

If you want to add a text shadow in that color use the text-shadow property, you can generate a text shadow directly with our [CSS Text Shadow Generator](#).

Here you see how black text with a 4 pixel rgb(183, 138, 139) colored shadow looks like.

```
.shadow{ text-shadow: 4px 4px 2px rgb(183, 138, 139) }
```

Border

The CSS property to change the border of an element to HunterLab 54.8710, 12.2289, 7.6322 is called "border". The border property can be set on classes, ids or directly on the HTML element.

This example shows the color as border, it can be applied via the CSS property "border" or "border-color".

```
.border, #border, table{ border:4px solid rgb(183, 138, 139) }
```


If only the border color should be changed use the property `border-color`.

```
.border{ border-color:rgb(183, 138, 139) }
```

If you want to add a box shadow in that color use:

Here you see how a box with a 4 pixel `rgb(183, 138, 139)` colored shadow looks like.

```
.boxshadow{ -moz-box-shadow:4px 4px 4px 4px rgb(183, 138, 139); -webkit-box-shadow:4px 4px 4px 4px rgb(183, 138, 139); box-shadow:4px 4px 4px 4px rgb(183, 138, 139) }
```

Background

The CSS property to change the background color of an element to HunterLab 54.8710, 12.2289, 7.6322 is called "background". The background property can be set on classes, ids or directly on the HTML element.

```
.background, #background, body{  
background: rgb(183, 138, 139) }
```

If only the background color should be changed can be used:

```
.background{ background-color: rgb(183,  
138, 139) }
```

This example shows the color as background, it is applied via the CSS property "background".

To optimize and compress your CSS code, you can use our [online CSS compressor and optimizer](#) based on csstidy. If you want to create a linear or radial gradient as background or border, check our [CSS Gradient Generator](#).

Hey! You found this booklet interesting? Support Converting Colors with the new Membership Option!

The pro membership hides all ads, plus gives you double the colors in the color bucket, and more awesome pro features!

[Learn more, Memberships starting at \\$2.50/m!](#)

**Follow me
on Twitter!**

@ConvertingColor