

Converting Colors

HunterLab(54.9993, 6.6319,
11.2861)

Have a look what the booklet for
HunterLab(54.9993, 6.6319,
11.2861) contains.

HunterLab(54.9434, 6.5329, 11.1804)	3
<i>Conversions</i>	4
<i>Details</i>	6
<i>Harmonies</i>	12
<i>Previews</i>	24
<i>Color Blindness Simulation</i>	28
<i>CSS Examples</i>	31

Color

**HunterLab(54.9434, 6.5329,
11.1804)**

Conversions

Conversions Part 1

Format	Color
Hex	B08E82
RGB	176, 142, 130
RGB Percent	69%, 56%, 51%
CMY	0.3098, 0.4431, 0.4902
CMYK	0.00, 0.19, 0.26, 0.31
HSL	16°, 23%, 60%
HSV	16°, 26%, 69%
XYZ	31.6067, 30.1878, 25.2801
YIQ	150.7980, 24.1160, 3.4760

Conversions

Conversions Part 2

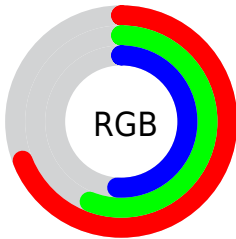
Format	Color
RYB	176, 146, 130
Decimal	11570818
CIELab	61.82, 10.99, 11.24
CIELCh	62, 15.721, 45.653
Yxy	30.1892, 0.3630, 0.3467
Android (android.graphics.Color)	4289760898 (0xFFB08E82)
YUV	150.7980, -10.2534, 22.1022
Hunter-Lab	54.9434, 6.5329, 11.1804

Details

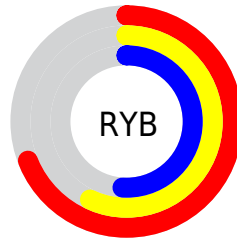
The HunterLab color $54.9434, 6.5329, 11.1804$ is a light color, and the websafe version is hex $CC9999$. A complement of this color would be $58.6774, -10.4578, -5.5296$, and the grayscale version is $55.5825, -2.9657, 3.0199$.

A 20% lighter version of the original color is $77.4949, 6.1935, 13.5849$, and $35.2978, 6.4006, 8.7865$ is the 20% darker color. If you saturate the color by 10%, you get $51.0966, 10.8459, 13.7519$, and if you desaturate by 10%, it is $58.9934, 2.4865, 8.4032$.

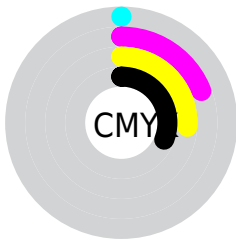
Distribution



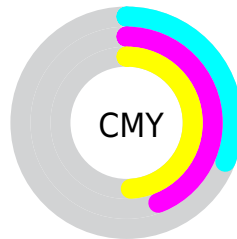
- Red (69%)
- Green (56%)
- Blue (51%)



- Red (69%)
- Yellow (57%)
- Blue (51%)



- Cyan (0%)
- Magenta (19%)
- Yellow (26%)
- Black (31%)



- Cyan (31%)
- Magenta (44%)
- Yellow (49%)

Brightness & Saturation Gradients

These gradients show how the HunterLab color 54.9434, 6.5329, 11.1804 changes by changing the brightness by 10 percent. The first figure shows a shift by +10% for each color and the second figure -10%.

Similar to the brightness gradients but the following saturation gradients show a change of the HunterLab color 54.9434, 6.5329, 11.1804 by changing the saturation by 10% instead.

■ 54.9434, 6.5329,
11.1804

■ 54.9434, 6.5329,
11.1804

174.0072, 4.3663,
22.0639

■ 44.7015, 6.4912,
9.9826

■ 77.4346, 6.4065,
13.5605

■ 35.1882, 6.3714,
8.7671

■ 89.6075, 6.2556,
14.7514

■ 26.4660, 6.1582,
7.5205

■ 102.3589, 6.0522,
15.9473

■ 18.6142, 5.8332,
6.2191

115.6635, 5.8004,
17.1506

■ 11.7430, 5.3681,
4.9967

129.4994, 5.5033,
18.3629

■ 4.4851, 10.4368,
3.1396

143.8467, 5.1637,

0.0000, NaN, NaN

19.5853

0.0000, NaN, NaN

158.6880, 4.7840,
20.8187

0.0000, NaN, NaN

■ 54.9434, 6.5329,
11.1804

■ 54.9434, 6.5329,
11.1804

■ 51.0966, 10.8459,
13.7519

■ 58.9934, 2.4865,
8.4032

■ 47.4775, 15.4377,
16.0647

■ 63.2190, -1.3050,
5.4573

■ 44.1200, 20.2921,
18.0564

■ 67.6012, -4.8660,
2.3736

■ 41.0612, 25.3614,
19.6525

■ 72.1233, -8.2207,
-0.8248

■ 38.3412, 30.5489,
20.7730

■ 76.7709, -11.3924,
-4.1204

■ 36.0001, 35.6941,
21.3485

■ 81.5322, -14.4028,
-7.4998

■ 34.0713, 40.5637,
21.3649

■ 86.3970, -17.2716,
-10.9527

■ 33.4341, 42.2810,
21.3421

■ 90.7746, -23.3117,
-6.2669

■ 93.7924, -27.6539,
-2.4951

Harmonies

Analogous

The Analogous color harmony consists of three colors that are next to each other on the color wheel.



54.9447, 10.2649, 6.2498



54.9434, 6.5329, 11.1804



54.9447, 0.3511, 13.7513

Triad

The Triadic color harmony groups three colors that are evenly spaced from another and form a triangle on the color wheel.



54.9447, 6.5309, 11.1812



54.9447, -15.0655, 5.9916



54.9447, 0.6469, -10.4212

Complementary

The Complementary color scheme is a pair of colors which are on the opposite of each other on the color wheel.



54.9434, 6.5329, 11.1804



58.6774, -10.4578, -5.5296

Split Complementary

Split-complementary colors differ from the complementary color scheme. The scheme consists of three colors, the original color and two neighbors of the complement color.



54.9447, -6.1450, -10.5124



54.9434, 6.5329, 11.1804



54.9447, -14.9950, -0.4810

Square

The Square scheme is like the rectangle color scheme, but the four colors are evenly spaced on the color wheel.



54.9447, 6.5309, 11.1812



54.9447, -11.9975, 11.0121



54.9447, -11.7999, -6.6940



54.9447, 6.7566, -6.4583

Rectangle

The Rectangle color scheme consists of four colors that form a rectangle on the color wheel.



54.9434, 6.5329, 11.1804



54.9447, -4.2199, 14.0083



54.9447, -11.7999, -6.6940



54.9447, -1.6375, -10.9205

Sweetspot

The Sweet Spot groups the original color and five complimentary colors.



54.9447, 6.5309, 11.1812



83.9803, -0.7600, 8.1607



52.8149, 17.8661, -6.8373



38.6993, -0.0069, 4.0757



94.3401, -5.0338, 5.1257



41.3092, -2.2042, 2.2444

Same Dimension

The Same Dimension uses a secret algorithm to generate beautiful new colors.



54.9447, 6.5309, 11.1812



71.1575, 11.8911, 16.9686



61.2962, -4.4743, 17.2639



29.7556, -0.0577, 3.0860



28.7833, 35.7874, 18.3627



5.9794, 4.0313, 3.7551

Inverse Universe

The Inverse Universe completely reimagines the original color for something new.



58.6774, -10.4578, -5.5296



77.1664, -15.5389, -9.9601



52.0368, 0.3228, -14.7290



30.4118, -3.0294, 0.1532



37.5859, -10.3848, -24.5613



7.3001, -2.7209, -3.2508

Previews

White Background



This preview shows how the HunterLab color 54.9434, 6.5329, 11.1804 looks on a white background.

Color Contrast Check

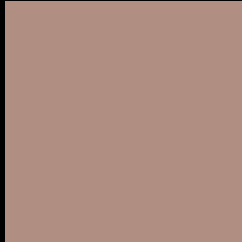
Large Text (above 18pt) WCAG AA × Fail

Any Text WCAG AA × Fail

Large Text (above 18pt) WCAG AAA × Fail

Any Text WCAG AAA × Fail

Black Background



This preview shows how the HunterLab color 54.9434, 6.5329, 11.1804 looks on a black background.

Color Contrast Check

Large Text (above 18pt) WCAG AA ✓ Pass

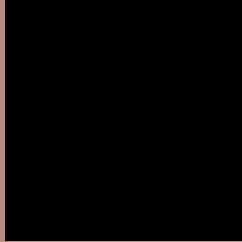
Any Text WCAG AA ✓ Pass

Large Text (above 18pt) WCAG AAA ✓ Pass

Any Text WCAG AAA ✓ Pass

If you want to check with other color combinations, try the [Color Contrast Checker](#).

HunterLab 54.9434, 6.5329, 11.1804 Background



This preview shows how black text looks on a background with the HunterLab color 54.9434, 6.5329, 11.1804.



This preview shows how white text looks on a background with the HunterLab color 54.9434, 6.5329,

Color Blindness Simulation

Color vision deficiency is a very complex topic, and I could not describe the different causes any better than Wikipedia does, so if you want to learn more, you should check out their [article about color blindness](#).

Dichromacy



Original Color

54.9434, 6.5329, 11.1804

Protanopia

55.0309, -3.0147, 9.5572

Deuteranopia

54.9692, 3.8105, 11.1594



Tritanopia

54.8928, 11.5645, 2.8616

Trichromacy



Original Color

54.9434, 6.5329, 11.1804

Protanomaly

54.8067, 0.5472, 9.7757

Deuteranomaly

54.9007, 4.9922, 11.1094

Tritanomaly

54.8511, 9.6683, 5.8787

Monochromacy



Original Color

54.9434, 6.5329, 11.1804

Achromatopsia

55.6299, -2.9683, 3.0225

Achromatomaly

55.3503, 0.0296, 6.2709

CSS Examples

Text

The CSS property to change the color of the text to HunterLab 54.9434, 6.5329, 11.1804 is called "color". The color property can be set on classes, ids or directly on the HTML element.

This example shows how text in the color `rgb(176, 142, 130)` looks like.

```
.text, #text, p{  
    color:rgb(176, 142, 130)  
}
```

If you want to add a text shadow in that color use the text-shadow property, you can generate a text shadow directly with our [CSS Text Shadow Generator](#).

Here you see how black text with a 4 pixel rgb(176, 142, 130) colored shadow looks like.

```
.shadow{ text-shadow: 4px 4px 2px rgb(176, 142, 130) }
```

Border

The CSS property to change the border of an element to HunterLab 54.9434, 6.5329, 11.1804 is called "border". The border property can be set on classes, ids or directly on the HTML element.

This example shows the color as border, it can be applied via the CSS property "border" or "border-color".

```
.border, #border, table{ border:4px solid rgb(176, 142, 130) }
```


If only the border color should be changed use the property `border-color`.

```
.border{ border-color:rgb(176, 142, 130) }
```

If you want to add a box shadow in that color use:

Here you see how a box with a 4 pixel `rgb(176, 142, 130)` colored shadow looks like.

```
.boxshadow{ -moz-box-shadow:4px 4px 4px  
4px rgb(176, 142, 130); -webkit-box-  
shadow:4px 4px 4px 4px rgb(176, 142, 130);  
box-shadow:4px 4px 4px 4px rgb(176, 142,  
130) }
```

Background

The CSS property to change the background color of an element to HunterLab 54.9434, 6.5329, 11.1804 is called "background". The background property can be set on classes, ids or directly on the HTML element.

```
.background, #background, body{  
background: rgb(176, 142, 130) }
```

If only the background color should be changed can be used:

```
.background{ background-color: rgb(176,  
142, 130) }
```

This example shows the color as background, it is applied via the CSS property "background".

To optimize and compress your CSS code, you can use our [online CSS compressor and optimizer](#) based on csstidy. If you want to create a linear or radial gradient as background or border, check our [CSS Gradient Generator](#).

Hey! You found this booklet interesting? Support Converting Colors with the new Membership Option!

The pro membership hides all ads, plus gives you double the colors in the color bucket, and more awesome pro features!

[Learn more, Memberships starting at \\$2.50/m!](#)

**Follow me
on Twitter!**

@ConvertingColor