

Converting Colors

HunterLab(55.0569, 1.3819,
13.5409)

Have a look what the booklet for
HunterLab(55.0569, 1.3819,
13.5409) contains.

HunterLab(55.1797, 1.3850, 13.5365)	3
<i>Conversions</i>	4
<i>Details</i>	6
<i>Harmonies</i>	12
<i>Previews</i>	24
<i>Color Blindness Simulation</i>	28
<i>CSS Examples</i>	31

Color

**HunterLab(55.1797, 1.3850,
13.5365)**

Conversions

Conversions Part 1

Format	Color
Hex	A9927C
RGB	169, 146, 124
RGB Percent	66%, 57%, 49%
CMY	0.3373, 0.4274, 0.5137
CMYK	0.00, 0.14, 0.27, 0.34
HSL	29°, 21%, 57%
HSV	29°, 27%, 66%
XYZ	30.2791, 30.4480, 23.3500
YIQ	150.3690, 20.7700, -1.9660

Conversions

Conversions Part 2

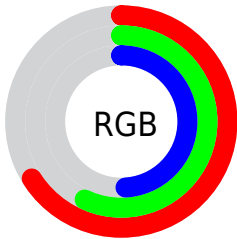
Format	Color
RYB	169, 167, 124
Decimal	11113084
CIELab	62.04, 5.11, 14.84
CIElCh	62, 15.693, 71.003
Yxy	30.4494, 0.3601, 0.3621
Android (android.graphics.Color)	4289303164 (0xFFA9927C)
YUV	150.3690, -12.9999, 16.3394
Hunter-Lab	55.1797, 1.3850, 13.5365

Details

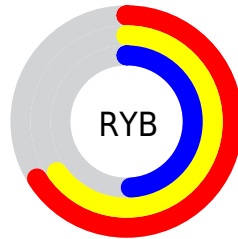
The HunterLab color $55.1797, 1.3850, 13.5365$ is a dark color, and the websafe version is hex 999999 . A complement of this color would be $52.9304, -5.2605, -9.5228$, and the grayscale version is $55.4207, -2.9571, 3.0111$.

A 20% lighter version of the original color is $77.7756, 0.7736, 16.2298$, and $35.4778, 1.5868, 10.7646$ is the 20% darker color. If you saturate the color by 10%, you get $52.4355, 3.6212, 16.6140$, and if you desaturate by 10%, it is $58.0331, -0.5963, 10.0436$.

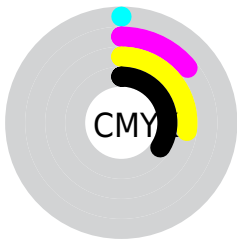
Distribution



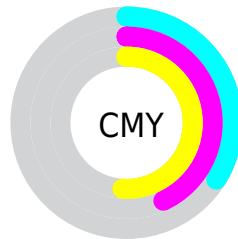
- Red (66%)
- Green (57%)
- Blue (49%)



- Red (66%)
- Yellow (65%)
- Blue (49%)



- Cyan (0%)
- Magenta (14%)
- Yellow (27%)
- Black (34%)



- Cyan (34%)
- Magenta (43%)
- Yellow (51%)

Brightness & Saturation Gradients

These gradients show how the HunterLab color 55.1797, 1.3850, 13.5365 changes by changing the brightness by 10 percent. The first figure shows a shift by +10% for each color and the second figure -10%.

Similar to the brightness gradients but the following saturation gradients show a change of the HunterLab color 55.1797, 1.3850, 13.5365 by changing the saturation by 10% instead.

■ 55.1797, 1.3850,
13.5365

■ 55.1797, 1.3850,
13.5365

174.3541, -3.0093,
25.9141

■ 44.9221, 1.6531,
12.1166

■ 77.6995, 0.6887,
16.3134

■ 35.3920, 1.8637,
10.6577

■ 89.8856, 0.2730,
17.6845

■ 26.6513, 2.0063,
9.1399

■ 102.6495, -0.1840,
19.0510

■ 18.7791, 2.0687,
7.5293

115.9663, -0.6797,
20.4165

■ 11.8845, 2.0315,
6.2542

129.8137, -1.2119,
21.7837

■ 4.7523, 4.4303,
3.3266

144.1723, -1.7786,

0.0000, NaN, NaN

23.1547

0.0000, NaN, NaN

159.0244, -2.3782,
24.5310

0.0000, NaN, NaN

■ 55.1797, 1.3850,
13.5365

■ 55.1797, 1.3850,
13.5365

■ 52.4355, 3.6212,
16.6140

■ 58.0331, -0.5963,
10.0436

■ 49.8061, 6.1323,
19.2294

■ 60.9834, -2.3340,
6.1744

■ 47.3031, 8.9266,
21.3378

■ 64.0239, -3.8476,
1.9675

■ 44.9374, 12.0068,
22.8959

■ 67.1477, -5.1547,
-2.5433

■ 42.7200, 15.3647,
23.8681

■ 70.3486, -6.2724,
-7.3281

■ 40.6617, 18.9754,
24.2361

■ 73.6209, -7.2166,
-12.3607

■ 38.7703, 22.7842,
24.0386

■ 76.9598, -8.0022,
-17.6180

■ 38.1654, 24.0741,
23.9388

■ 80.1902, -9.5867,
-20.7049

■ 82.9593, -13.9365,
-16.7398

Harmonies

Analogous

The Analogous color harmony consists of three colors that are next to each other on the color wheel.



55.1810, 7.2935, 10.5717



55.1797, 1.3850, 13.5365



55.1810, -5.4258, 13.8916

Triad

The Triadic color harmony groups three colors that are evenly spaced from another and form a triangle on the color wheel.



55.1810, 1.3831, 13.5373



55.1810, -15.2293, 0.5714



55.1810, 5.9153, -7.2553

Complementary

The Complementary color scheme is a pair of colors which are on the opposite of each other on the color wheel.



55.1797, 1.3850, 13.5365



52.9304, -5.2605, -9.5228

Split Complementary

Split-complementary colors differ from the complementary color scheme. The scheme consists of three colors, the original color and two neighbors of the complement color.



55.1810, -0.4242, -10.6860



55.1797, 1.3850, 13.5365



55.1810, -12.4917, -5.8160

Square

The Square scheme is like the rectangle color scheme, but the four colors are evenly spaced on the color wheel.



55.1810, 1.3831, 13.5373



55.1810, -14.7981, 6.9090



55.1810, -7.1481, -10.1294



55.1810, 9.9965, -1.2098

Rectangle

The Rectangle color scheme consists of four colors that form a rectangle on the color wheel.



55.1797, 1.3850, 13.5365



55.1810, -9.5354, 12.6550



55.1810, -7.1481, -10.1294



55.1810, 3.9652, -8.7838

Sweetspot

The Sweet Spot groups the original color and five complimentary colors.



55.1810, 1.3831, 13.5373



81.0049, -2.7907, 9.0785



49.9651, 15.6496, -1.8157



37.5465, -1.1504, 4.5999



92.0917, -4.9138, 5.0035



39.3538, -2.0998, 2.1382

Same Dimension

The Same Dimension uses a secret algorithm to generate beautiful new colors.



55.1810, 1.3831, 13.5373



71.6439, 3.5889, 20.6357



61.6344, -9.2499, 19.4730



28.5047, -0.8974, 3.4271



33.1098, 20.4056, 20.7593



6.0786, 1.2545, 3.7676

Inverse Universe

The Inverse Universe completely reimagines the original color for something new.



52.9304, -5.2605, -9.5228



67.9880, -7.1634, -16.8563



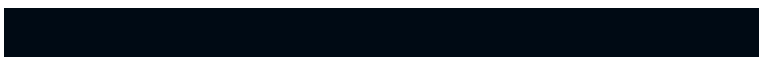
46.6413, 5.5433, -18.8785



28.1258, -2.0224, -0.4505



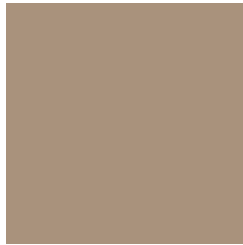
26.9191, 5.2306, -44.9379



5.2754, -1.0085, -4.4167

Previews

White Background



This preview shows how the HunterLab color 55.1797, 1.3850, 13.5365 looks on a white background.

Color Contrast Check

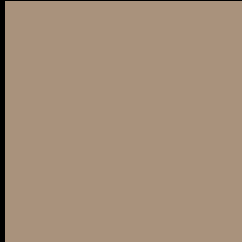
Large Text (above 18pt) WCAG AA × Fail

Any Text WCAG AA × Fail

Large Text (above 18pt) WCAG AAA × Fail

Any Text WCAG AAA × Fail

Black Background



This preview shows how the HunterLab color 55.1797, 1.3850, 13.5365 looks on a black background.

Color Contrast Check

Large Text (above 18pt) WCAG AA ✓ Pass

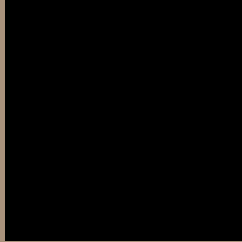
Any Text WCAG AA ✓ Pass

Large Text (above 18pt) WCAG AAA ✓ Pass

Any Text WCAG AAA ✓ Pass

If you want to check with other color combinations, try the [Color Contrast Checker](#).

HunterLab 55.1797, 1.3850, 13.5365 Background



This preview shows how black text looks on a background with the HunterLab color 55.1797, 1.3850, 13.5365.



This preview shows how white text looks on a background with the HunterLab color 55.1797, 1.3850,

Color Blindness Simulation

Color vision deficiency is a very complex topic, and I could not describe the different causes any better than Wikipedia does, so if you want to learn more, you should check out their [article about color blindness](#).

Dichromacy



Original Color

55.1797, 1.3850, 13.5365

Protanopia

55.3066, -3.9233, 12.8506

Deuteranopia

55.0327, 3.7391, 13.4324



Tritanopia

55.1512, 8.4664, 1.7335

Trichromacy



Original Color

55.1797, 1.3850, 13.5365

Protanomaly

55.3687, -2.2774, 13.3020

Deuteranomaly

55.2057, 2.9024, 13.5887

Tritanomaly

55.0053, 5.9611, 6.4137

Monochromacy



Original Color

55.1797, 1.3850, 13.5365

Achromatopsia

55.2257, -2.9467, 3.0005

Achromatomaly

55.3047, -1.6995, 7.0335

CSS Examples

Text

The CSS property to change the color of the text to HunterLab 55.1797, 1.3850, 13.5365 is called "color". The color property can be set on classes, ids or directly on the HTML element.

This example shows how text in the color `rgb(169, 146, 124)` looks like.

```
.text, #text, p{  
    color:rgb(169, 146, 124)  
}
```

If you want to add a text shadow in that color use the text-shadow property, you can generate a text shadow directly with our [CSS Text Shadow Generator](#).

Here you see how black text with a 4 pixel rgb(169, 146, 124) colored shadow looks like.

```
.shadow{ text-shadow: 4px 4px 2px rgb(169, 146, 124) }
```

Border

The CSS property to change the border of an element to HunterLab 55.1797, 1.3850, 13.5365 is called "border". The border property can be set on classes, ids or directly on the HTML element.

This example shows the color as border, it can be applied via the CSS property "border" or "border-color".

```
.border, #border, table{ border:4px solid rgb(169, 146, 124) }
```


If only the border color should be changed use the property `border-color`.

```
.border{ border-color:rgb(169, 146, 124) }
```

If you want to add a box shadow in that color use:

Here you see how a box with a 4 pixel `rgb(169, 146, 124)` colored shadow looks like.

```
.boxshadow{ -moz-box-shadow:4px 4px 4px  
4px rgb(169, 146, 124); -webkit-box-  
shadow:4px 4px 4px 4px rgb(169, 146, 124);  
box-shadow:4px 4px 4px 4px rgb(169, 146,  
124) }
```

Background

The CSS property to change the background color of an element to HunterLab 55.1797, 1.3850, 13.5365 is called "background". The background property can be set on classes, ids or directly on the HTML element.

```
.background, #background, body{  
background: rgb(169, 146, 124) }
```

If only the background color should be changed can be used:

```
.background{ background-color: rgb(169,  
146, 124) }
```

This example shows the color as background, it is applied via the CSS property "background".

To optimize and compress your CSS code, you can use our [online CSS compressor and optimizer](#) based on csstidy. If you want to create a linear or radial gradient as background or border, check our [CSS Gradient Generator](#).

Hey! You found this booklet interesting? Support Converting Colors with the new Membership Option!

The pro membership hides all ads, plus gives you double the colors in the color bucket, and more awesome pro features!

[Learn more, Memberships starting at \\$2.50/m!](#)

**Follow me
on Twitter!**

@ConvertingColor