

Converting Colors

HunterLab(55.1029, 11.7867,
6.6247)

Have a look what the booklet for
HunterLab(55.1029, 11.7867,
6.6247) contains.

HunterLab(55.1029, 11.7867, 6.6247)	3
<i>Conversions</i>	4
<i>Details</i>	6
<i>Harmonies</i>	12
<i>Previews</i>	24
<i>Color Blindness Simulation</i>	28
<i>CSS Examples</i>	31

Color

**HunterLab(55.1029, 11.7867,
6.6247)**

Conversions

Conversions Part 1

Format	Color
Hex	B68B8E
RGB	182, 139, 142
RGB Percent	71%, 55%, 56%
CMY	0.2863, 0.4549, 0.4431
CMYK	0.00, 0.24, 0.22, 0.29
HSL	356°, 23%, 63%
HSV	356°, 24%, 71%
XYZ	33.4065, 30.3633, 29.6912
YIQ	152.1990, 24.6650, 10.0490

Conversions

Conversions Part 2

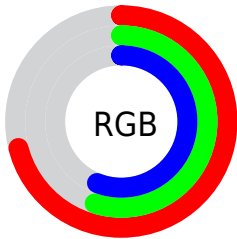
Format	Color
RYB	182, 139, 142
Decimal	11963278
CIELab	61.97, 16.79, 4.73
CIElCh	62, 17.448, 15.737
Yxy	30.3647, 0.3574, 0.3249
Android (android.graphics.Color)	4290153358 (0xFFB68B8E)
YUV	152.1990, -5.0281, 26.1355
Hunter-Lab	55.1029, 11.7867, 6.6247

Details

The HunterLab color **55.1029, 11.7867, 6.6247** is a light color, and the websafe version is hex **CC9999**. A complement of this color would be **64.9617, -16.1005, 0.8211**, and the grayscale version is **56.1290, -2.9949, 3.0496**.

A 20% lighter version of the original color is **77.7664, 12.2571, 8.3173**, and **35.3648, 10.8257, 5.0059** is the 20% darker color. If you saturate the color by 10%, you get **50.0548, 18.7137, 8.1618**, and if you desaturate by 10%, it is **60.5221, 5.0855, 5.2793**.

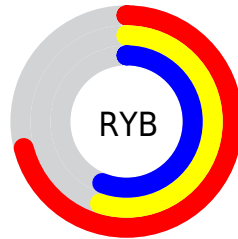
Distribution



Red (71%)

Green (55%)

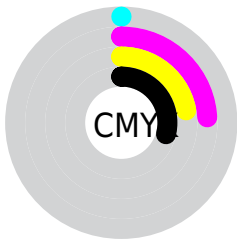
Blue (56%)



Red (71%)

Yellow (55%)

Blue (56%)

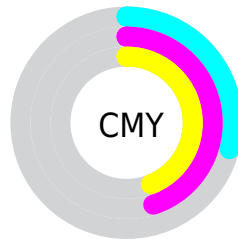


Cyan (0%)

Magenta (24%)

Yellow (22%)

Black (29%)



Cyan (29%)

Magenta (45%)

Yellow (44%)

Brightness & Saturation Gradients

These gradients show how the HunterLab color 55.1029, 11.7867, 6.6247 changes by changing the brightness by 10 percent. The first figure shows a shift by +10% for each color and the second figure -10%.

Similar to the brightness gradients but the following saturation gradients show a change of the HunterLab color 55.1029, 11.7867, 6.6247 by changing the saturation by 10% instead.

■ 55.1029, 11.7867,
6.6247

■ 55.1029, 11.7867,
6.6247

174.2414, 11.7463,
14.9090

■ 44.8504, 11.4551,
5.8093

■ 77.6134, 12.1986,
8.3191

■ 35.3257, 11.0289,
5.0113

■ 89.7952, 12.2996,
9.1973

■ 26.5910, 10.4903,
4.2288

■ 102.5551, 12.3383,
10.0968

■ 18.7255, 9.8185,
3.4560

115.8679, 12.3197,
11.0176

■ 11.8385, 8.9858,
2.6809

129.7116, 12.2479,
11.9594

■ 4.6672, 15.4305,
3.2670

144.0665, 12.1264,

0.0000, NaN, NaN

12.9220

0.0000, NaN, NaN

158.9151, 11.9584,
13.9053

0.0000, NaN, NaN

■ 55.1029, 11.7867,
6.6247

■ 55.1029, 11.7867,
6.6247

■ 50.0548, 18.7137,
8.1618

■ 60.5221, 5.0855,
5.2793

■ 45.4453, 25.8009,
9.8952

■ 66.2511, -1.3688,
4.1040

■ 41.3614, 32.8779,
11.8076

■ 72.2455, -7.5911,
3.0776

■ 37.8993, 39.6334,
13.8361

■ 78.4691, -13.6069,
2.1785

■ 35.1543, 45.5961,
15.8557

■ 84.8932, -19.4448,
1.3872

■ 33.1961, 50.2070,
17.6829

■ 91.4946, -25.1327,
0.6871

■ 32.0349, 53.0267,
19.1207

■ 94.1728, -26.2420,
-1.9944

■ 31.5807, 54.1723,
19.7132

Harmonies

Analogous

The Analogous color harmony consists of three colors that are next to each other on the color wheel.



55.1042, 11.8916, -0.5237



55.1029, 11.7867, 6.6247



55.1042, 7.5929, 12.0259

Triad

The Triadic color harmony groups three colors that are evenly spaced from another and form a triangle on the color wheel.



55.1042, 11.7847, 6.6257



55.1042, -12.9884, 11.8182



55.1042, -6.4852, -12.1852

Complementary

The Complementary color scheme is a pair of colors which are on the opposite of each other on the color wheel.



55.1029, 11.7867, 6.6247



64.9617, -16.1005, 0.8211

Split Complementary

Split-complementary colors differ from the complementary color scheme. The scheme consists of three colors, the original color and two neighbors of the complement color.



55.1042, -12.7427, -7.8712



55.1029, 11.7867, 6.6247



55.1042, -16.3576, 6.3043

Square

The Square scheme is like the rectangle color scheme, but the four colors are evenly spaced on the color wheel.



55.1042, 11.7847, 6.6257



55.1042, -6.8371, 14.7360



55.1042, -16.2702, -0.8912



55.1042, 1.0620, -12.0684

Rectangle

The Rectangle color scheme consists of four colors that form a rectangle on the color wheel.



55.1029, 11.7867, 6.6247



55.1042, 3.1692, 14.1925



55.1042, -16.2702, -0.8912



55.1042, -8.8002, -11.1822

Sweetspot

The Sweet Spot groups the original color and five complimentary colors.



55.1042, 11.7847, 6.6257



86.4661, 1.1569, 6.0546



55.9986, 17.1789, -12.0506



40.4191, 0.7857, 2.8890



96.5975, -5.1542, 5.2483



43.2801, -2.3093, 2.3515

Same Dimension

The Same Dimension uses a secret algorithm to generate beautiful new colors.



55.1042, 11.7847, 6.6257



70.8315, 20.3573, 9.8913



59.9133, 2.3929, 12.7865



30.0368, 1.0942, 2.2700



26.5460, 45.5505, 16.4586



5.0186, 8.6799, 2.5812

Inverse Universe

The Inverse Universe completely reimagines the original color for something new.



55.1042, 11.7847, 6.6257



70.8315, 20.3573, 9.8913



59.5385, -7.1075, -7.5086



30.0368, 1.0942, 2.2700



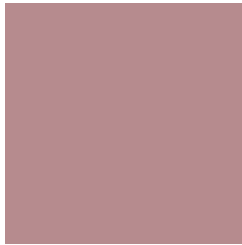
26.5460, 45.5505, 16.4586



5.0186, 8.6799, 2.5812

Previews

White Background



This preview shows how the HunterLab color 55.1029, 11.7867, 6.6247 looks on a white background.

Color Contrast Check

Large Text (above 18pt) WCAG AA × Fail

Any Text WCAG AA × Fail

Large Text (above 18pt) WCAG AAA × Fail

Any Text WCAG AAA × Fail

Black Background



This preview shows how the HunterLab color 55.1029, 11.7867, 6.6247 looks on a black background.

Color Contrast Check

Large Text (above 18pt) WCAG AA ✓ Pass

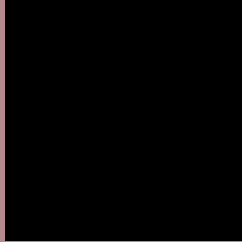
Any Text WCAG AA ✓ Pass

Large Text (above 18pt) WCAG AAA ✓ Pass

Any Text WCAG AAA ✓ Pass

If you want to check with other color combinations, try the [Color Contrast Checker](#).

HunterLab 55.1029, 11.7867, 6.6247 Background



This preview shows how black text looks on a background with the HunterLab color 55.1029, 11.7867, 6.6247.



This preview shows how white text looks on a background with the HunterLab color 55.1029, 11.7867,

Color Blindness Simulation

Color vision deficiency is a very complex topic, and I could not describe the different causes any better than Wikipedia does, so if you want to learn more, you should check out their [article about color blindness](#).

Dichromacy



Original Color

55.1029, 11.7867, 6.6247

Protanopia

55.1410, -1.8760, 3.8197

Deuteranopia

55.2256, 3.8168, 7.0427



Tritanopia

55.1490, 13.6715, 3.6532

Trichromacy



Original Color

55.1029, 11.7867, 6.6247

Protanomaly

54.9715, 3.2388, 4.5994

Deuteranomaly

55.1836, 6.4972, 7.0431

Tritanomaly

55.0632, 13.2268, 4.8796

Monochromacy



Original Color

55.1029, 11.7867, 6.6247

Achromatopsia

56.0347, -2.9899, 3.0445

Achromatomaly

55.4906, 2.2355, 4.2969

CSS Examples

Text

The CSS property to change the color of the text to HunterLab 55.1029, 11.7867, 6.6247 is called "color". The color property can be set on classes, ids or directly on the HTML element.

This example shows how text in the color `rgb(182, 139, 142)` looks like.

```
.text, #text, p{  
    color:rgb(182, 139, 142)  
}
```

If you want to add a text shadow in that color use the text-shadow property, you can generate a text shadow directly with our [CSS Text Shadow Generator](#).

Here you see how black text with a 4 pixel rgb(182, 139, 142) colored shadow looks like.

```
.shadow{ text-shadow: 4px 4px 2px rgb(182, 139, 142) }
```

Border

The CSS property to change the border of an element to HunterLab 55.1029, 11.7867, 6.6247 is called "border". The border property can be set on classes, ids or directly on the HTML element.

This example shows the color as border, it can be applied via the CSS property "border" or "border-color".

```
.border, #border, table{ border:4px solid rgb(182, 139, 142) }
```


If only the border color should be changed use the property `border-color`.

```
.border{ border-color:rgb(182, 139, 142) }
```

If you want to add a box shadow in that color use:

Here you see how a box with a 4 pixel `rgb(182, 139, 142)` colored shadow looks like.

```
.boxshadow{ -moz-box-shadow:4px 4px 4px  
4px rgb(182, 139, 142); -webkit-box-  
shadow:4px 4px 4px 4px rgb(182, 139, 142);  
box-shadow:4px 4px 4px 4px rgb(182, 139,  
142) }
```

Background

The CSS property to change the background color of an element to HunterLab 55.1029, 11.7867, 6.6247 is called "background". The background property can be set on classes, ids or directly on the HTML element.

```
.background, #background, body{  
background: rgb(182, 139, 142) }
```

If only the background color should be changed can be used:

```
.background{ background-color: rgb(182,  
139, 142) }
```

This example shows the color as background, it is applied via the CSS property "background".

To optimize and compress your CSS code, you can use our [online CSS compressor and optimizer](#) based on csstidy. If you want to create a linear or radial gradient as background or border, check our [CSS Gradient Generator](#).

Hey! You found this booklet interesting? Support Converting Colors with the new Membership Option!

The pro membership hides all ads, plus gives you double the colors in the color bucket, and more awesome pro features!

[Learn more, Memberships starting at \\$2.50/m!](#)

**Follow me
on Twitter!**

@ConvertingColor