

Converting Colors

HunterLab(55.1368, 3.5170,
8.3214)

Have a look what the booklet for
HunterLab(55.1368, 3.5170, 8.3214)
contains.

HunterLab(55.1458, 3.3889, 8.1882)	3
<i>Conversions</i>	4
<i>Details</i>	6
<i>Harmonies</i>	12
<i>Previews</i>	24
<i>Color Blindness Simulation</i>	28
<i>CSS Examples</i>	31

Color

**HunterLab(55.1458, 3.3889,
8.1882)**

Conversions

Conversions Part 1

Format	Color
Hex	A8918A
RGB	168, 145, 138
RGB Percent	66%, 57%, 54%
CMY	0.3412, 0.4314, 0.4588
CMYK	0.00, 0.14, 0.18, 0.34
HSL	14°, 15%, 60%
HSV	14°, 18%, 66%
XYZ	30.8613, 30.4106, 28.2880
YIQ	151.0790, 15.9550, 2.6990

Conversions

Conversions Part 2

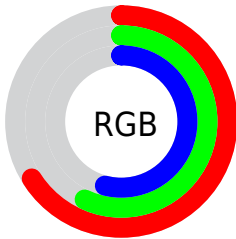
Format	Color
RYB	168, 147, 138
Decimal	11047306
CIELab	62.01, 7.42, 6.88
CIElCh	62, 10.118, 42.825
Yxy	30.4120, 0.3446, 0.3396
Android (android.graphics.Color)	4289237386 (0xFFA8918A)
YUV	151.0790, -6.4479, 14.8397
Hunter-Lab	55.1458, 3.3889, 8.1882

Details

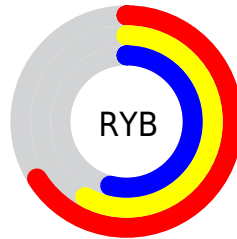
The HunterLab color $55.1458, 3.3889, 8.1882$ is a light color, and the websafe version is hex 999999 . A complement of this color would be $58.0684, -8.4978, -2.1927$, and the grayscale version is $55.6836, -2.9711, 3.0254$.

A 20% lighter version of the original color is $77.6508, 2.6314, 10.2587$, and $35.4993, 3.5259, 6.5163$ is the 20% darker color. If you saturate the color by 10%, you get $51.2318, 7.4843, 10.6906$, and if you desaturate by 10%, it is $59.2439, -0.4674, 5.5507$.

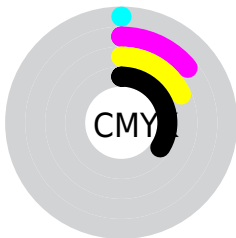
Distribution



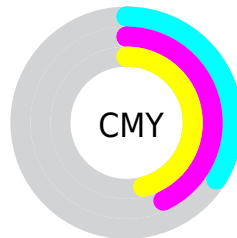
- Red (66%)
- Green (57%)
- Blue (54%)



- Red (66%)
- Yellow (58%)
- Blue (54%)



- Cyan (0%)
- Magenta (14%)
- Yellow (18%)
- Black (34%)



- Cyan (34%)
- Magenta (43%)
- Yellow (46%)

Brightness & Saturation Gradients

These gradients show how the HunterLab color 55.1458, 3.3889, 8.1882 changes by changing the brightness by 10 percent. The first figure shows a shift by +10% for each color and the second figure -10%.

Similar to the brightness gradients but the following saturation gradients show a change of the HunterLab color 55.1458, 3.3889, 8.1882 by changing the saturation by 10% instead.

■ 55.1458, 3.3889,
8.1882

■ 55.1458, 3.3889,
8.1882

174.3043, -0.1249,
17.3146

■ 44.8904, 3.5342,
7.2499

■ 77.6615, 2.9185,
10.1036

■ 35.3627, 3.6134,
6.3183

■ 89.8457, 2.6075,
11.0829

■ 26.6247, 3.6142,
5.3878

■ 102.6078, 2.2507,
12.0784

■ 18.7554, 3.5213,
4.4472

115.9228, 1.8513,
13.0908

■ 11.8642, 3.3112,
3.4745

129.7686, 1.4119,
14.1204

■ 4.7149, 6.6067,
3.3004

144.1256, 0.9349,

0.0000, NaN, NaN

15.1675

0.0000, NaN, NaN

158.9761, 0.4220,
16.2322

0.0000, NaN, NaN

■ 55.1458, 3.3889,
8.1882

■ 55.1458, 3.3889,
8.1882

■ 51.2318, 7.4843,
10.6906

■ 59.2439, -0.4674,
5.5507

■ 47.5239, 11.8375,
13.0185

■ 63.5009, -4.0999,
2.8028

■ 44.0537, 16.4465,
15.1242

■ 67.9001, -7.5334,
-0.0344

■ 40.8564, 21.2852,
16.9459

■ 72.4265, -10.7906,
-2.9461

■ 37.9720, 26.2878,
18.4088

■ 77.0675, -13.8930,
-5.9212

■ 35.4428, 31.3312,
19.4326

■ 81.8127, -16.8600,
-8.9515

■ 33.3101, 36.2238,
19.9481

■ 86.6305, -19.8354,
-11.7155

■ 31.6025, 40.6910,
19.9917

■ 90.9385, -26.1089,
-6.1035

■ 31.2894, 41.5476,
20.0078

■ 93.3086, -29.4588,
-3.1349

Harmonies

Analogous

The Analogous color harmony consists of three colors that are next to each other on the color wheel.



55.1470, 5.5343, 4.7557



55.1458, 3.3889, 8.1882



55.1470, -0.4291, 10.1398

Triad

The Triadic color harmony groups three colors that are evenly spaced from another and form a triangle on the color wheel.



55.1470, 3.3872, 8.1891



55.1470, -10.7855, 5.3221



55.1470, -1.0580, -5.4214

Complementary

The Complementary color scheme is a pair of colors which are on the opposite of each other on the color wheel.



55.1458, 3.3889, 8.1882



58.0684, -8.4978, -2.1927

Split Complementary

Split-complementary colors differ from the complementary color scheme. The scheme consists of three colors, the original color and two neighbors of the complement color.



55.1470, -5.4175, -5.2398



55.1458, 3.3889, 8.1882



55.1470, -10.9419, 1.1883

Square

The Square scheme is like the rectangle color scheme, but the four colors are evenly spaced on the color wheel.



55.1470, 3.3872, 8.1891



55.1470, -8.5704, 8.5757



55.1470, -9.0046, -2.7441



55.1470, 2.9144, -3.2224

Rectangle

The Rectangle color scheme consists of four colors that form a rectangle on the color wheel.



55.1458, 3.3889, 8.1882



55.1470, -3.3612, 10.4390



55.1470, -9.0046, -2.7441



55.1470, -2.5285, -5.6414

Sweetspot

The Sweet Spot groups the original color and five complimentary colors.



55.1470, 3.3872, 8.1891



81.3716, -2.0112, 6.4672



53.9216, 10.4772, -3.6658



37.8107, -0.7832, 3.1343



92.0917, -4.9138, 5.0035



39.3538, -2.0998, 2.1382

Same Dimension

The Same Dimension uses a secret algorithm to generate beautiful new colors.



55.1470, 3.3872, 8.1891



72.3971, 6.4718, 12.2438



59.4152, -3.9132, 12.5484



27.9572, 0.0333, 2.8293



27.3147, 35.7278, 17.4567



5.0629, 3.4227, 3.1797

Inverse Universe

The Inverse Universe completely reimagines the original color for something new.



58.0684, -8.4978, -2.1927



77.0862, -12.6284, -4.4264



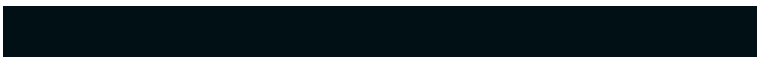
53.6550, -1.3166, -7.8978



28.6892, -2.9395, 0.2291



37.4551, -11.7687, -21.4105



6.4178, -2.6139, -2.3791

Previews

White Background



This preview shows how the HunterLab color 55.1458, 3.3889, 8.1882 looks on a white background.

Color Contrast Check

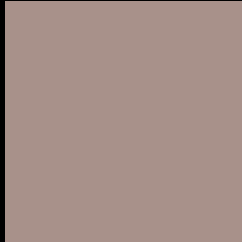
Large Text (above 18pt) WCAG AA × Fail

Any Text WCAG AA × Fail

Large Text (above 18pt) WCAG AAA × Fail

Any Text WCAG AAA × Fail

Black Background



This preview shows how the HunterLab color 55.1458, 3.3889, 8.1882 looks on a black background.

Color Contrast Check

Large Text (above 18pt) WCAG AA ✓ Pass

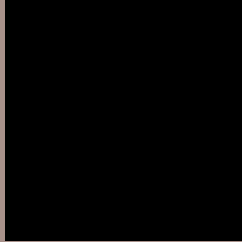
Any Text WCAG AA ✓ Pass

Large Text (above 18pt) WCAG AAA ✓ Pass

Any Text WCAG AAA ✓ Pass

If you want to check with other color combinations, try the [Color Contrast Checker](#).

HunterLab 55.1458, 3.3889, 8.1882 Background



This preview shows how black text looks on a background with the HunterLab color 55.1458, 3.3889, 8.1882.



This preview shows how white text looks on a background with the HunterLab color 55.1458, 3.3889,

8.1882.

Color Blindness Simulation

Color vision deficiency is a very complex topic, and I could not describe the different causes any better than Wikipedia does, so if you want to learn more, you should check out their [article about color blindness](#).

Dichromacy



Original Color

55.1458, 3.3889, 8.1882

Protanopia

55.0971, -2.4720, 7.2082

Deuteranopia

55.2456, 3.7244, 8.3023



Tritanopia

55.2486, 7.4542, 1.3663

Trichromacy



Original Color

55.1458, 3.3889, 8.1882

Protanomaly

55.2426, -0.5551, 7.8148

Deuteranomaly

55.2456, 3.7244, 8.3023

Tritanomaly

55.2446, 5.6851, 4.0724

Monochromacy



Original Color

55.1458, 3.3889, 8.1882

Achromatopsia

55.6299, -2.9683, 3.0225

Achromatomaly

55.4421, -0.9505, 5.0651

CSS Examples

Text

The CSS property to change the color of the text to HunterLab 55.1458, 3.3889, 8.1882 is called "color". The color property can be set on classes, ids or directly on the HTML element.

This example shows how text in the color `rgb(168, 145, 138)` looks like.

```
.text, #text, p{  
    color:rgb(168, 145, 138)  
}
```

If you want to add a text shadow in that color use the text-shadow property, you can generate a text shadow directly with our [CSS Text Shadow Generator](#).

Here you see how black text with a 4 pixel rgb(168, 145, 138) colored shadow looks like.

```
.shadow{ text-shadow: 4px 4px 2px rgb(168, 145, 138) }
```

Border

The CSS property to change the border of an element to HunterLab 55.1458, 3.3889, 8.1882 is called "border".

The border property can be set on classes, ids or directly on the HTML element.

This example shows the color as border, it can be applied via the CSS property "border" or "border-color".

```
.border, #border, table{ border:4px solid rgb(168, 145, 138) }
```


If only the border color should be changed use the property `border-color`.

```
.border{ border-color:rgb(168, 145, 138) }
```

If you want to add a box shadow in that color use:

Here you see how a box with a 4 pixel `rgb(168, 145, 138)` colored shadow looks like.

```
.boxshadow{ -moz-box-shadow:4px 4px 4px  
4px rgb(168, 145, 138); -webkit-box-  
shadow:4px 4px 4px 4px rgb(168, 145, 138);  
box-shadow:4px 4px 4px 4px rgb(168, 145,  
138) }
```

Background

The CSS property to change the background color of an element to HunterLab 55.1458, 3.3889, 8.1882 is called "background". The background property can be set on classes, ids or directly on the HTML element.

```
.background, #background, body{  
background: rgb(168, 145, 138) }
```

If only the background color should be changed can be used:

```
.background{ background-color: rgb(168,  
145, 138) }
```

This example shows the color as background, it is applied via the CSS property "background".

To optimize and compress your CSS code, you can use our [online CSS compressor and optimizer](#) based on csstidy. If you want to create a linear or radial gradient as background or border, check our [CSS Gradient Generator](#).

Hey! You found this booklet interesting? Support Converting Colors with the new Membership Option!

The pro membership hides all ads, plus gives you double the colors in the color bucket, and more awesome pro features!

[Learn more, Memberships starting at \\$2.50/m!](#)

**Follow me
on Twitter!**

@ConvertingColor