

Converting Colors

HunterLab(55.1391, 14.0725,
13.0773)

Have a look what the booklet for
HunterLab(55.1391, 14.0725,
13.0773) contains.

HunterLab(55.2033, 13.9716, 13.0607)	3
<i>Conversions</i>	4
<i>Details</i>	6
<i>Harmonies</i>	12
<i>Previews</i>	24
<i>Color Blindness Simulation</i>	28
<i>CSS Examples</i>	31

Color

**HunterLab(55.2033, 13.9716,
13.0607)**

Conversions

Conversions Part 1

Format	Color
Hex	BF897E
RGB	191, 137, 126
RGB Percent	75%, 54%, 49%
CMY	0.2510, 0.4627, 0.5059
CMYK	0.00, 0.28, 0.34, 0.25
HSL	10°, 34%, 62%
HSV	10°, 34%, 75%
XYZ	34.1974, 30.4740, 23.8183
YIQ	151.8920, 35.7150, 8.0270

Conversions

Conversions Part 2

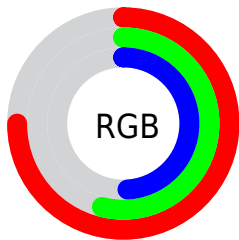
Format	Color
RYB	191, 139, 126
Decimal	12552574
CIELab	62.06, 19.15, 14.08
CIELCh	62, 23.769, 36.330
Yxy	30.4755, 0.3865, 0.3444
Android (android.graphics.Color)	4290742654 (0xFFBF897E)
YUV	151.8920, -12.7648, 34.2977
Hunter-Lab	55.2033, 13.9716, 13.0607

Details

The HunterLab color **55.2033, 13.9716, 13.0607** is a dark color, and the websafe version is hex **CC9999**. A complement of this color would be **63.9048, -15.9456, -6.6321**, and the grayscale version is **56.0319, -2.9897, 3.0443**.

A 20% lighter version of the original color is **77.8820, 14.5944, 15.7791**, and **35.4774, 12.8875, 10.3528** is the 20% darker color. If you saturate the color by 10%, you get **50.8372, 19.8426, 15.4821**, and if you desaturate by 10%, it is **59.8868, 8.3866, 10.4872**.

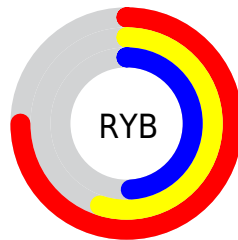
Distribution



Red (75%)

Green (54%)

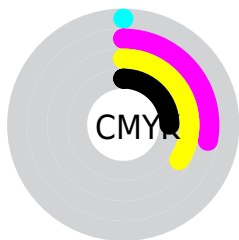
Blue (49%)



Red (75%)

Yellow (55%)

Blue (49%)

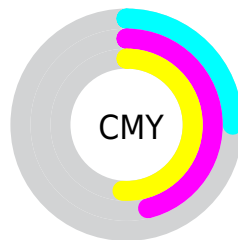


Cyan (0%)

Magenta (28%)

Yellow (34%)

Black (25%)



Cyan (25%)

Magenta (46%)

Yellow (51%)

Brightness & Saturation Gradients

These gradients show how the HunterLab color 55.2033, 13.9716, 13.0607 changes by changing the brightness by 10 percent. The first figure shows a shift by +10% for each color and the second figure -10%.

Similar to the brightness gradients but the following saturation gradients show a change of the HunterLab color 55.2033, 13.9716, 13.0607 by changing the saturation by 10% instead.

■ 55.2033, 13.9716,
13.0607

■ 55.2033, 13.9716,
13.0607

174.3888, 14.7740,
25.1211

■ 44.9442, 13.5265,
11.6883

■ 77.7260, 14.5950,
15.7532

■ 35.4124, 12.9814,
10.2815

■ 89.9134, 14.7956,
17.0859

■ 26.6698, 12.3181,
8.8220

■ 102.6786, 14.9302,
18.4161

■ 18.7956, 11.5158,
7.2779

115.9966, 15.0043,
19.7472

■ 11.8987, 10.5498,
5.9896

129.8452, 15.0221,
21.0816

■ 4.7782, 17.2075,
3.3448

144.2049, 14.9876,

0.0000, NaN, NaN

22.4211

0.0000, NaN, NaN

159.0580, 14.9039,
23.7672

0.0000, NaN, NaN

■ 55.2033, 13.9716,
13.0607

■ 55.2033, 13.9716,
13.0607

■ 50.8372, 19.8426,
15.4821

■ 59.8868, 8.3866,
10.4872

■ 46.8362, 25.9624,
17.6819

■ 64.8402, 3.0998,
7.8058

■ 43.2606, 32.2219,
19.5712

■ 70.0289, -1.9068,
5.0491

■ 40.1739, 38.4252,
21.0405

■ 75.4233, -6.6589,
2.2381

■ 37.6376, 44.2728,
21.9790

■ 80.9990, -11.1854,
-0.6138

■ 35.6983, 49.3820,
22.3153

■ 86.7361, -15.5147,
-3.4978

■ 34.8246, 51.8807,
22.3670

■ 92.4524, -20.6078,
-4.0642

■ 94.7715, -24.0320,
-1.2105

Harmonies

Analogous

The Analogous color harmony consists of three colors that are next to each other on the color wheel.



55.2046, 18.1968, 5.0465



55.2033, 13.9716, 13.0607



55.2046, 5.2482, 17.6518

Triad

The Triadic color harmony groups three colors that are evenly spaced from another and form a triangle on the color wheel.



55.2046, 13.9693, 13.0616



55.2046, -19.9768, 10.0605



55.2046, -0.7429, -19.2483

Complementary

The Complementary color scheme is a pair of colors which are on the opposite of each other on the color wheel.



55.2033, 13.9716, 13.0607



63.9048, -15.9456, -6.6321

Split Complementary

Split-complementary colors differ from the complementary color scheme. The scheme consists of three colors, the original color and two neighbors of the complement color.



55.2046, -10.6933, -17.2362



55.2033, 13.9716, 13.0607



55.2046, -21.3236, 0.8823

Square

The Square scheme is like the rectangle color scheme, but the four colors are evenly spaced on the color wheel.



55.2046, 13.9693, 13.0616



55.2046, -14.2225, 16.1547



55.2046, -18.0463, -9.3925



55.2046, 9.3097, -14.4732

Rectangle

The Rectangle color scheme consists of four colors that form a rectangle on the color wheel.



55.2033, 13.9716, 13.0607



55.2046, -1.6724, 18.7220



55.2046, -18.0463, -9.3925



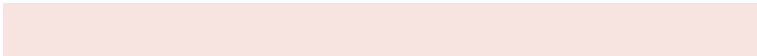
55.2046, -4.2132, -19.3540

Sweetspot

The Sweet Spot groups the original color and five complimentary colors.



55.2046, 13.9693, 13.0616



89.4287, 1.5109, 9.0278



54.1299, 27.9512, -13.5501



41.4473, 1.1591, 4.4755



98.8636, -5.2751, 5.3714



45.2661, -2.4153, 2.4594

Same Dimension

The Same Dimension uses a secret algorithm to generate beautiful new colors.



55.2046, 13.9693, 13.0616



69.3851, 24.6496, 19.9709



64.0960, -2.1597, 21.1989



31.2897, 0.3352, 3.0348



28.3767, 41.5938, 18.2138



6.3055, 6.2147, 3.9942

Inverse Universe

The Inverse Universe completely reimagines the original color for something new.



63.9048, -15.9456, -6.6321



83.3887, -23.8475, -11.8008



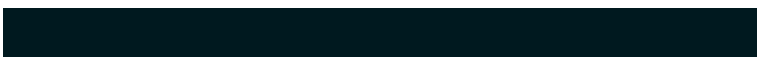
54.1044, -0.5041, -20.6843



32.4455, -3.5942, 0.4278



43.3529, -16.8182, -17.8816



9.0010, -3.8777, -2.8796

Previews

White Background



This preview shows how the HunterLab color 55.2033, 13.9716, 13.0607 looks on a white background.

Color Contrast Check

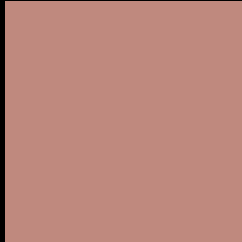
Large Text (above 18pt) WCAG AA × Fail

Any Text WCAG AA × Fail

Large Text (above 18pt) WCAG AAA × Fail

Any Text WCAG AAA × Fail

Black Background



This preview shows how the HunterLab color 55.2033, 13.9716, 13.0607 looks on a black background.

Color Contrast Check

Large Text (above 18pt) WCAG AA ✓ Pass

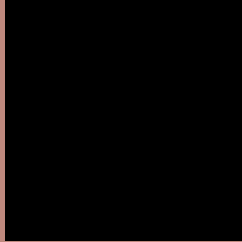
Any Text WCAG AA ✓ Pass

Large Text (above 18pt) WCAG AAA ✓ Pass

Any Text WCAG AAA ✓ Pass

If you want to check with other color combinations, try the [Color Contrast Checker](#).

HunterLab 55.2033, 13.9716, 13.0607 Background



This preview shows how black text looks on a background with the HunterLab color 55.2033, 13.9716, 13.0607.



This preview shows how white text looks on a background with the HunterLab color 55.2033, 13.9716,

Color Blindness Simulation

Color vision deficiency is a very complex topic, and I could not describe the different causes any better than Wikipedia does, so if you want to learn more, you should check out their [article about color blindness](#).

Dichromacy



Original Color

55.2033, 13.9716, 13.0607

Protanopia

55.3595, -3.4500, 10.6722

Deuteranopia

55.4348, 3.7192, 13.4724



Tritanopia

55.1652, 18.7445, 5.5296

Trichromacy



Original Color

55.2033, 13.9716, 13.0607

Protanomaly

55.0432, 2.6378, 11.2150

Deuteranomaly

55.2539, 7.3195, 13.3561

Tritanomaly

55.1084, 16.8941, 8.3841

Monochromacy



Original Color

55.2033, 13.9716, 13.0607

Achromatopsia

56.0347, -2.9899, 3.0445

Achromatomaly

55.6396, 2.4605, 6.6364

CSS Examples

Text

The CSS property to change the color of the text to HunterLab 55.2033, 13.9716, 13.0607 is called "color". The color property can be set on classes, ids or directly on the HTML element.

This example shows how text in the color `rgb(191, 137, 126)` looks like.

```
.text, #text, p{  
  color:rgb(191, 137, 126)  
}
```

If you want to add a text shadow in that color use the text-shadow property, you can generate a text shadow directly with our [CSS Text Shadow Generator](#).

Here you see how black text with a 4 pixel rgb(191, 137, 126) colored shadow looks like.

```
.shadow{ text-shadow: 4px 4px 2px rgb(191, 137, 126) }
```

Border

The CSS property to change the border of an element to HunterLab 55.2033, 13.9716, 13.0607 is called "border". The border property can be set on classes, ids or directly on the HTML element.

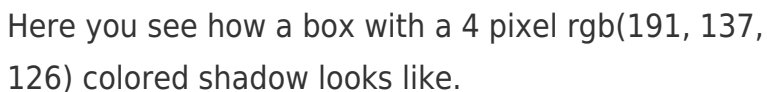
This example shows the color as border, it can be applied via the CSS property "border" or "border-color".

```
.border, #border, table{ border:4px solid rgb(191, 137, 126) }
```


If only the border color should be changed use the property `border-color`.

```
.border{ border-color:rgb(191, 137, 126) }
```

If you want to add a box shadow in that color use:



Here you see how a box with a 4 pixel `rgb(191, 137, 126)` colored shadow looks like.

```
.boxshadow{ -moz-box-shadow:4px 4px 4px 4px rgb(191, 137, 126); -webkit-box-shadow:4px 4px 4px 4px rgb(191, 137, 126); box-shadow:4px 4px 4px 4px rgb(191, 137, 126) }
```

Background

The CSS property to change the background color of an element to HunterLab 55.2033, 13.9716, 13.0607 is called "background". The background property can be set on classes, ids or directly on the HTML element.

```
.background, #background, body{  
background: rgb(191, 137, 126) }
```

If only the background color should be changed can be used:

```
.background{ background-color: rgb(191,  
137, 126) }
```

This example shows the color as background, it is applied via the CSS property "background".

To optimize and compress your CSS code, you can use our [online CSS compressor and optimizer](#) based on csstidy. If you want to create a linear or radial gradient as background or border, check our [CSS Gradient Generator](#).

Hey! You found this booklet interesting? Support Converting Colors with the new Membership Option!

The pro membership hides all ads, plus gives you double the colors in the color bucket, and more awesome pro features!

[Learn more, Memberships starting at \\$2.50/m!](#)

**Follow me
on Twitter!**

@ConvertingColor