

Converting Colors

HunterLab(55.2200, 1.5391,
12.3105)

Have a look what the booklet for
HunterLab(55.2200, 1.5391,
12.3105) contains.

HunterLab(55.1735, 1.5509, 12.0790)	3
<i>Conversions</i>	4
<i>Details</i>	6
<i>Harmonies</i>	12
<i>Previews</i>	24
<i>Color Blindness Simulation</i>	28
<i>CSS Examples</i>	31

Color

**HunterLab(55.1735, 1.5509,
12.0790)**

Conversions

Conversions Part 1

Format	Color
Hex	A89280
RGB	168, 146, 128
RGB Percent	66%, 57%, 50%
CMY	0.3412, 0.4274, 0.4980
CMYK	0.00, 0.13, 0.24, 0.34
HSL	27°, 19%, 58%
HSV	27°, 24%, 66%
XYZ	30.3236, 30.4412, 24.6996
YIQ	150.5260, 18.8900, -0.9340

Conversions

Conversions Part 2

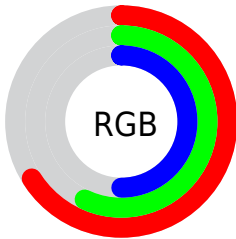
Format	Color
RYB	168, 161, 128
Decimal	11047552
CIELab	62.03, 5.30, 12.56
CIELCh	62, 13.637, 67.126
Yxy	30.4425, 0.3548, 0.3562
Android (android.graphics.Color)	4289237632 (0xFFA89280)
YUV	150.5260, -11.1053, 15.3247
Hunter-Lab	55.1735, 1.5509, 12.0790

Details

The HunterLab color $55.1735, 1.5509, 12.0790$ is a light color, and the websafe version is hex 999999 . A complement of this color would be $54.0632, -5.8739, -7.4169$, and the grayscale version is $55.4774, -2.9601, 3.0142$.

A 20% lighter version of the original color is $77.7766, 0.9853, 14.6176$, and $35.4614, 1.6906, 9.5130$ is the 20% darker color. If you saturate the color by 10%, you get $52.2511, 4.0133, 15.1363$, and if you desaturate by 10%, it is $58.2123, -0.6636, 8.6563$.

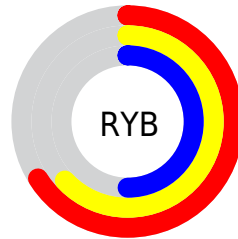
Distribution



Red (66%)

Green (57%)

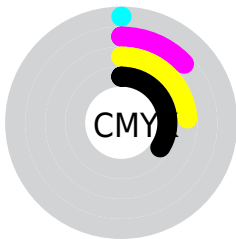
Blue (50%)



Red (66%)

Yellow (63%)

Blue (50%)

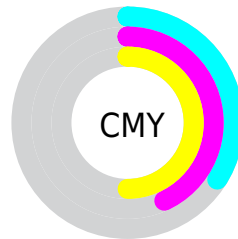


Cyan (0%)

Magenta (13%)

Yellow (24%)

Black (34%)



Cyan (34%)

Magenta (43%)

Yellow (50%)

Brightness & Saturation Gradients

These gradients show how the HunterLab color 55.1735, 1.5509, 12.0790 changes by changing the brightness by 10 percent. The first figure shows a shift by +10% for each color and the second figure -10%.

Similar to the brightness gradients but the following saturation gradients show a change of the HunterLab color 55.1735, 1.5509, 12.0790 by changing the saturation by 10% instead.

■ 55.1735, 1.5509,
12.0790

■ 55.1735, 1.5509,
12.0790

174.3450, -2.7696,
23.5083

■ 44.9163, 1.8087,
10.8005

■ 77.6925, 0.8736,
14.6036

■ 35.3866, 2.0082,
9.4968

■ 89.8783, 0.4667,
15.8601

■ 26.6464, 2.1389,
8.1522

■ 102.6419, 0.0180,
17.1184

■ 18.7748, 2.1881,
6.7394

115.9583, -0.4696,
18.3810

■ 11.8808, 2.1363,
5.4613

129.8055, -0.9940,
19.6499

■ 4.7455, 4.6142,
3.3218

144.1637, -1.5532,

0.0000, NaN, NaN

20.9267

0.0000, NaN, NaN

159.0155, -2.1456,
22.2125

0.0000, NaN, NaN

■ 55.1735, 1.5509,
12.0790

■ 55.1735, 1.5509,
12.0790

■ 52.2511, 4.0133,
15.1363

■ 58.2123, -0.6636,
8.6563

■ 49.4526, 6.7447,
17.7808

■ 61.3538, -2.6426,
4.9064

■ 46.7912, 9.7545,
19.9650

■ 64.5906, -4.4067,
0.8660

■ 44.2805, 13.0459,
21.6400

■ 67.9147, -5.9742,
-3.4334

■ 41.9344, 16.6099,
22.7614

■ 71.3192, -7.3624,
-7.9647

■ 39.7672, 20.4194,
23.2976

■ 74.7981, -8.5878,
-12.7043

■ 37.7920, 24.4216,
23.2462

■ 78.3461, -9.6651,
-17.6322

■ 36.6618, 26.9208,
23.0621

■ 81.6612, -12.2607,
-18.5852

■ 84.6565, -16.8730,
-14.3899

Harmonies

Analogous

The Analogous color harmony consists of three colors that are next to each other on the color wheel.



55.1748, 6.4280, 9.1489



55.1735, 1.5509, 12.0790



55.1748, -4.3522, 12.7062

Triad

The Triadic color harmony groups three colors that are evenly spaced from another and form a triangle on the color wheel.



55.1748, 1.5491, 12.0798



55.1748, -13.7966, 1.6428



55.1748, 4.0948, -6.3493

Complementary

The Complementary color scheme is a pair of colors which are on the opposite of each other on the color wheel.



55.1735, 1.5509, 12.0790



54.0632, -5.8739, -7.4169

Split Complementary

Split-complementary colors differ from the complementary color scheme. The scheme consists of three colors, the original color and two neighbors of the complement color.



55.1748, -1.5275, -8.8615



55.1735, 1.5509, 12.0790



55.1748, -11.7349, -3.9421

Square

The Square scheme is like the rectangle color scheme, but the four colors are evenly spaced on the color wheel.



55.1748, 1.5491, 12.0798



55.1748, -13.0506, 7.0499



55.1748, -7.3035, -7.9372



55.1748, 7.9405, -1.3750

Rectangle

The Rectangle color scheme consists of four colors that form a rectangle on the color wheel.



55.1735, 1.5509, 12.0790



55.1748, -8.0429, 11.7997



55.1748, -7.3035, -7.9372



55.1748, 2.3410, -7.5324

Sweetspot

The Sweet Spot groups the original color and five complimentary colors.



55.1748, 1.5491, 12.0798



81.2293, -2.7082, 8.3318



50.9564, 13.7194, -1.9341



37.8121, -1.1962, 4.0225



92.0917, -4.9138, 5.0035



39.3538, -2.0998, 2.1382

Same Dimension

The Same Dimension uses a secret algorithm to generate beautiful new colors.



55.1748, 1.5491, 12.0798



72.0514, 3.9437, 18.6933



60.9557, -8.0420, 17.5554



28.4210, -0.7562, 3.3363



32.0152, 23.0128, 20.1305



5.9353, 1.5335, 3.6841

Inverse Universe

The Inverse Universe completely reimagines the original color for something new.



54.0632, -5.8739, -7.4169



70.2061, -8.3489, -13.6580



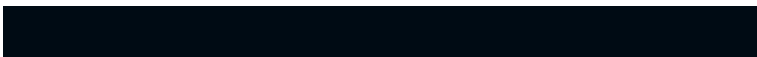
48.3550, 3.8000, -15.5609



28.2111, -2.1623, -0.3467



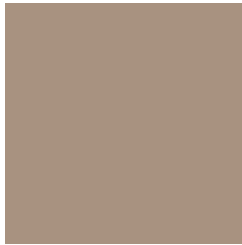
28.4065, 2.4726, -40.8432



5.4436, -1.2613, -4.0812

Previews

White Background



This preview shows how the HunterLab color 55.1735, 1.5509, 12.0790 looks on a white background.

Color Contrast Check

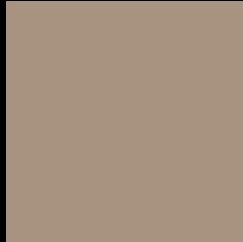
Large Text (above 18pt) WCAG AA × Fail

Any Text WCAG AA × Fail

Large Text (above 18pt) WCAG AAA × Fail

Any Text WCAG AAA × Fail

Black Background



This preview shows how the HunterLab color 55.1735, 1.5509, 12.0790 looks on a black background.

Color Contrast Check

Large Text (above 18pt) WCAG AA ✓ Pass

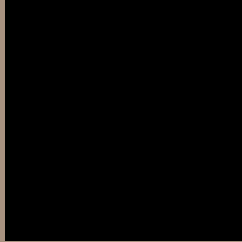
Any Text WCAG AA ✓ Pass

Large Text (above 18pt) WCAG AAA ✓ Pass

Any Text WCAG AAA ✓ Pass

If you want to check with other color combinations, try the [Color Contrast Checker](#).

HunterLab 55.1735, 1.5509, 12.0790 Background



This preview shows how black text looks on a background with the HunterLab color 55.1735, 1.5509, 12.0790.



This preview shows how white text looks on a background with the HunterLab color 55.1735, 1.5509, 12.0790.

Color Blindness Simulation

Color vision deficiency is a very complex topic, and I could not describe the different causes any better than Wikipedia does, so if you want to learn more, you should check out their [article about color blindness](#).

Dichromacy



Original Color

55.1735, 1.5509, 12.0790

Protanopia

55.3105, -3.7191, 11.3784

Deuteranopia

55.0233, 3.8953, 11.9677



Tritanopia

55.0489, 8.1314, 1.6044

Trichromacy



Original Color

55.1735, 1.5509, 12.0790

Protanomaly

55.3687, -2.0890, 11.8416

Deuteranomaly

55.1971, 3.0606, 12.1294

Tritanomaly

54.9587, 5.9168, 5.5039

Monochromacy



Original Color

55.1735, 1.5509, 12.0790

Achromatopsia

55.6299, -2.9683, 3.0225

Achromatomaly

55.3590, -1.4034, 6.2555

CSS Examples

Text

The CSS property to change the color of the text to HunterLab 55.1735, 1.5509, 12.0790 is called "color". The color property can be set on classes, ids or directly on the HTML element.

This example shows how text in the color `rgb(168, 146, 128)` looks like.

```
.text, #text, p{  
    color:rgb(168, 146, 128)  
}
```

If you want to add a text shadow in that color use the text-shadow property, you can generate a text shadow directly with our [CSS Text Shadow Generator](#).

Here you see how black text with a 4 pixel rgb(168, 146, 128) colored shadow looks like.

```
.shadow{ text-shadow: 4px 4px 2px rgb(168, 146, 128) }
```

Border

The CSS property to change the border of an element to HunterLab 55.1735, 1.5509, 12.0790 is called "border". The border property can be set on classes, ids or directly on the HTML element.

This example shows the color as border, it can be applied via the CSS property "border" or "border-color".

```
.border, #border, table{ border:4px solid rgb(168, 146, 128) }
```


If only the border color should be changed use the property `border-color`.

```
.border{ border-color:rgb(168, 146, 128) }
```

If you want to add a box shadow in that color use:

Here you see how a box with a 4 pixel `rgb(168, 146, 128)` colored shadow looks like.

```
.boxshadow{ -moz-box-shadow:4px 4px 4px  
4px rgb(168, 146, 128); -webkit-box-  
shadow:4px 4px 4px 4px rgb(168, 146, 128);  
box-shadow:4px 4px 4px 4px rgb(168, 146,  
128) }
```

Background

The CSS property to change the background color of an element to HunterLab 55.1735, 1.5509, 12.0790 is called "background". The background property can be set on classes, ids or directly on the HTML element.

```
.background, #background, body{  
background: rgb(168, 146, 128) }
```

If only the background color should be changed can be used:

```
.background{ background-color: rgb(168,  
146, 128) }
```

This example shows the color as background, it is applied via the CSS property "background".

To optimize and compress your CSS code, you can use our [online CSS compressor and optimizer](#) based on csstidy. If you want to create a linear or radial gradient as background or border, check our [CSS Gradient Generator](#).

Hey! You found this booklet interesting? Support Converting Colors with the new Membership Option!

The pro membership hides all ads, plus gives you double the colors in the color bucket, and more awesome pro features!

[Learn more, Memberships starting at \\$2.50/m!](#)

**Follow me
on Twitter!**

@ConvertingColor