

Converting Colors

HunterLab(55.2396, 5.4106,
23.5924)

Have a look what the booklet for
HunterLab(55.2396, 5.4106,
23.5924) contains.

HunterLab(55.1504, 5.6630, 23.4421)	3
<i>Conversions</i>	4
<i>Details</i>	6
<i>Harmonies</i>	12
<i>Previews</i>	24
<i>Color Blindness Simulation</i>	28
<i>CSS Examples</i>	31

Color

**HunterLab(55.1504, 5.6630,
23.4421)**

Conversions

Conversions Part 1

Format	Color
Hex	B98E5B
RGB	185, 142, 91
RGB Percent	73%, 56%, 36%
CMY	0.2745, 0.4431, 0.6431
CMYK	0.00, 0.23, 0.51, 0.27
HSL	33°, 40%, 54%
HSV	33°, 51%, 73%
XYZ	31.5690, 30.4157, 14.1045
YIQ	149.0430, 41.9990, -6.7450

Conversions

Conversions Part 2

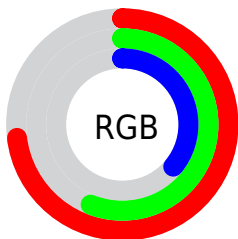
Format	Color
RYB	170, 185, 91
Decimal	12160603
CIELab	62.01, 10.01, 33.31
CIElCh	62, 34.778, 73.275
Yxy	30.4171, 0.4149, 0.3997
Android (android.graphics.Color)	4290350683 (0xFFB98E5B)
YUV	149.0430, -28.6152, 31.5343
Hunter-Lab	55.1504, 5.6630, 23.4421

Details

The HunterLab color **55.1504, 5.6630, 23.4421** is a dark color, and the websafe version is hex **CC9966**. A complement of this color would be **47.7244, -2.7436, -27.6625**, and the grayscale version is **54.9402, -2.9315, 2.9850**.

A 20% lighter version of the original color is **77.7737, 5.2399, 28.5064**, and **35.3495, 5.3810, 18.0430** is the 20% darker color. If you saturate the color by 10%, you get **52.6430, 8.4303, 25.5839**, and if you desaturate by 10%, it is **57.7852, 3.2109, 20.6727**.

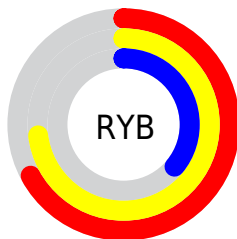
Distribution



Red (73%)

Green (56%)

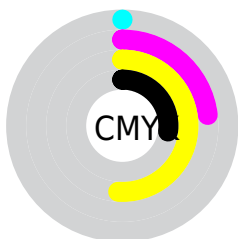
Blue (36%)



Red (67%)

Yellow (73%)

Blue (36%)

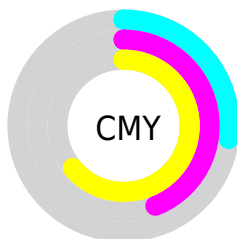


Cyan (0%)

Magenta (23%)

Yellow (51%)

Black (27%)



Cyan (27%)

Magenta (44%)

Yellow (64%)

Brightness & Saturation Gradients

These gradients show how the HunterLab color 55.1504, 5.6630, 23.4421 changes by changing the brightness by 10 percent. The first figure shows a shift by +10% for each color and the second figure -10%.

Similar to the brightness gradients but the following saturation gradients show a change of the HunterLab color 55.1504, 5.6630, 23.4421 by changing the saturation by 10% instead.

■ 55.1504, 5.6630,
23.4421

■ 55.1504, 5.6630,
23.4421

174.3112, 3.1216,
44.0122

■ 44.8948, 5.6728,
20.7896

■ 77.6667, 5.4405,
28.4151

■ 35.3667, 5.6083,
17.9816

■ 89.8512, 5.2451,
30.7791

■ 26.6283, 5.4545,
14.9703

■ 102.6136, 4.9991,
33.0823

■ 18.7587, 5.1938,
12.1045

■ 115.9288, 4.7063,
35.3363

■ 11.8670, 4.7993,
8.3069

129.7749, 4.3696,
37.5497

■ 4.7201, 8.9876,
3.3041

144.1320, 3.9918,

0.0000, NaN, NaN

39.7298

0.0000, NaN, NaN

158.9828, 3.5752,
41.8824

0.0000, NaN, NaN

■ 55.1504, 5.6630,
23.4421

■ 55.1504, 5.6630,
23.4421

■ 52.6430, 8.4303,
25.5839

■ 57.7852, 3.2109,
20.6727

■ 50.2677, 11.5207,
27.0597

■ 60.5348, 1.0725,
17.3174

■ 48.0340, 14.9209,
27.8483

■ 63.3925, -0.7679,
13.4227

■ 45.9490, 18.6032,
27.9549

■ 66.3505, -2.3270,
9.0341

■ 44.1609, 22.1579,
27.5997

■ 69.4016, -3.6225,
4.1948

■ 72.5395, -4.6730,
-1.0552

■ 75.7580, -5.4964,
-6.6791

■ 79.0517, -6.1100,
-12.6439

■ 82.3172, -7.0724,
-17.5428

Harmonies

Analogous

The Analogous color harmony consists of three colors that are next to each other on the color wheel.



55.1517, 19.8241, 18.7768



55.1504, 5.6630, 23.4421



55.1517, -9.4552, 23.6851

Triad

The Triadic color harmony groups three colors that are evenly spaced from another and form a triangle on the color wheel.



55.1517, 5.6606, 23.4427



55.1517, -28.4538, -3.7236



55.1517, 18.4006, -21.1290

Complementary

The Complementary color scheme is a pair of colors which are on the opposite of each other on the color wheel.



55.1504, 5.6630, 23.4421



47.7244, -2.7436, -27.6625

Split Complementary

Split-complementary colors differ from the complementary color scheme. The scheme consists of three colors, the original color and two neighbors of the complement color.



55.1517, 3.8804, -31.2102



55.1504, 5.6630, 23.4421



55.1517, -22.5320, -19.4840

Square

The Square scheme is like the rectangle color scheme, but the four colors are evenly spaced on the color wheel.



55.1517, 5.6606, 23.4427



55.1517, -28.0872, 10.3733



55.1517, -11.0547, -30.5380



55.1517, 27.7039, -5.5521

Rectangle

The Rectangle color scheme consists of four colors that form a rectangle on the color wheel.



55.1504, 5.6630, 23.4421



55.1517, -17.9879, 21.4604



55.1517, -11.0547, -30.5380



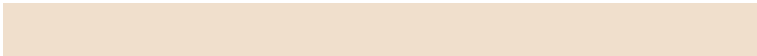
55.1517, 13.9043, -25.4392

Sweetspot

The Sweet Spot groups the original color and five complimentary colors.



55.1517, 5.6606, 23.4427



87.0238, -2.2337, 14.7729



44.2066, 36.1531, -2.8042



40.0219, -0.8330, 7.4265



96.5975, -5.1542, 5.2483



43.2801, -2.3093, 2.3515

Same Dimension

The Same Dimension uses a secret algorithm to generate beautiful new colors.



55.1517, 5.6606, 23.4427



70.0642, 11.7508, 34.5203



67.3662, -15.8849, 32.5214



31.3015, -1.1877, 3.9113



36.6418, 17.8391, 22.8908



7.7167, 1.6286, 4.7835

Inverse Universe

The Inverse Universe completely reimagines the original color for something new.



47.7244, -2.7436, -27.6625



58.2181, -1.0676, -47.8632



36.5678, 19.6145, -51.5428



30.6237, -2.0038, -0.6796



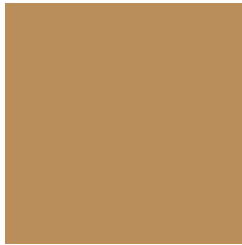
26.2878, 9.8487, -54.1180



6.0630, -0.2483, -7.0423

Previews

White Background



This preview shows how the HunterLab color 55.1504, 5.6630, 23.4421 looks on a white background.

Color Contrast Check

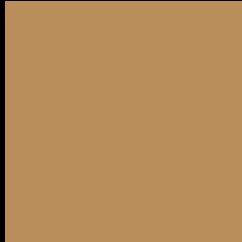
Large Text (above 18pt) WCAG AA × Fail

Any Text WCAG AA × Fail

Large Text (above 18pt) WCAG AAA × Fail

Any Text WCAG AAA × Fail

Black Background



This preview shows how the HunterLab color 55.1504, 5.6630, 23.4421 looks on a black background.

Color Contrast Check

Large Text (above 18pt) WCAG AA ✓ Pass

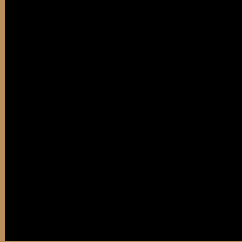
Any Text WCAG AA ✓ Pass

Large Text (above 18pt) WCAG AAA ✓ Pass

Any Text WCAG AAA ✓ Pass

If you want to check with other color combinations, try the [Color Contrast Checker](#).

HunterLab 55.1504, 5.6630, 23.4421 Background



This preview shows how black text looks on a background with the HunterLab color 55.1504, 5.6630, 23.4421.



This preview shows how white text looks on a background with the HunterLab color 55.1504, 5.6630,

Color Blindness Simulation

Color vision deficiency is a very complex topic, and I could not describe the different causes any better than Wikipedia does, so if you want to learn more, you should check out their [article about color blindness](#).

Dichromacy



Original Color

55.1504, 5.6630, 23.4421

Protanopia

55.2389, -5.4239, 22.5767

Deuteranopia

55.0866, 4.0565, 23.3624



Tritanopia

55.0912, 17.2767, 4.9827

Trichromacy



Original Color

55.1504, 5.6630, 23.4421

Protanomaly

55.1619, -1.3235, 22.8365

Deuteranomaly

55.1974, 4.4275, 23.4585

Tritanomaly

55.1132, 12.3537, 12.9422

Monochromacy



Original Color

55.1504, 5.6630, 23.4421

Achromatopsia

54.8219, -2.9252, 2.9786

Achromatomaly

54.5872, -0.4511, 11.4470

CSS Examples

Text

The CSS property to change the color of the text to HunterLab 55.1504, 5.6630, 23.4421 is called "color". The color property can be set on classes, ids or directly on the HTML element.

This example shows how text in the color `rgb(185, 142, 91)` looks like.

```
.text, #text, p{  
    color:rgb(185, 142, 91)  
}
```

If you want to add a text shadow in that color use the text-shadow property, you can generate a text shadow directly with our [CSS Text Shadow Generator](#).

Here you see how black text with a 4 pixel rgb(185, 142, 91) colored shadow looks like.

```
.shadow{ text-shadow: 4px 4px 2px rgb(185, 142, 91) }
```

Border

The CSS property to change the border of an element to HunterLab 55.1504, 5.6630, 23.4421 is called "border". The border property can be set on classes, ids or directly on the HTML element.

This example shows the color as border, it can be applied via the CSS property "border" or "border-color".

```
.border, #border, table{ border:4px solid rgb(185, 142, 91) }
```


If only the border color should be changed use the property `border-color`.

```
.border{ border-color:rgb(185, 142, 91) }
```

If you want to add a box shadow in that color use:

Here you see how a box with a 4 pixel `rgb(185, 142, 91)` colored shadow looks like.

```
.boxshadow{ -moz-box-shadow:4px 4px 4px  
4px rgb(185, 142, 91); -webkit-box-  
shadow:4px 4px 4px 4px rgb(185, 142, 91);  
box-shadow:4px 4px 4px 4px rgb(185, 142,  
91) }
```

Background

The CSS property to change the background color of an element to HunterLab 55.1504, 5.6630, 23.4421 is called "background". The background property can be set on classes, ids or directly on the HTML element.

```
.background, #background, body{  
background: rgb(185, 142, 91) }
```

If only the background color should be changed can be used:

```
.background{ background-color: rgb(185,  
142, 91) }
```

This example shows the color as background, it is applied via the CSS property "background".

To optimize and compress your CSS code, you can use our [online CSS compressor and optimizer](#) based on csstidy. If you want to create a linear or radial gradient as background or border, check our [CSS Gradient Generator](#).

Hey! You found this booklet interesting? Support Converting Colors with the new Membership Option!

The pro membership hides all ads, plus gives you double the colors in the color bucket, and more awesome pro features!

[Learn more, Memberships starting at \\$2.50/m!](#)

**Follow me
on Twitter!**

@ConvertingColor