

Converting Colors

HunterLab(55.2450, 15.6170,
13.7661)

Have a look what the booklet for
HunterLab(55.2450, 15.6170,
13.7661) contains.

HunterLab(55.2566, 15.3643, 13.8571)	3
<i>Conversions</i>	4
<i>Details</i>	6
<i>Harmonies</i>	12
<i>Previews</i>	24
<i>Color Blindness Simulation</i>	28
<i>CSS Examples</i>	31

Color

**HunterLab(55.2566, 15.3643,
13.8571)**

Conversions

Conversions Part 1

Format	Color
Hex	C2887C
RGB	194, 136, 124
RGB Percent	76%, 53%, 49%
CMY	0.2392, 0.4666, 0.5137
CMYK	0.00, 0.30, 0.36, 0.24
HSL	10°, 36%, 62%
HSV	10°, 36%, 76%
XYZ	34.6904, 30.5329, 23.1339
YIQ	151.9740, 38.4200, 8.5640

Conversions

Conversions Part 2

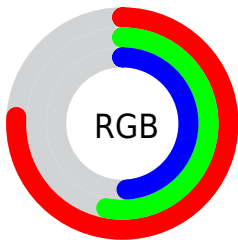
Format	Color
RYB	194, 138, 124
Decimal	12748924
CIELab	62.11, 20.63, 15.33
CIELCh	62, 25.707, 36.619
Yxy	30.5344, 0.3926, 0.3456
Android (android.graphics.Color)	4290939004 (0xFFC2887C)
YUV	151.9740, -13.7912, 36.8568
Hunter-Lab	55.2566, 15.3643, 13.8571

Details

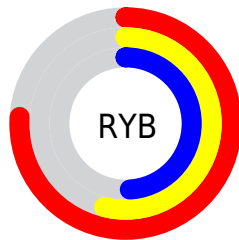
The HunterLab color **55.2566, 15.3643, 13.8571** is a light color, and the websafe version is hex **CC9999**. A complement of this color would be **64.5248, -16.7118, -7.4309**, and the grayscale version is **56.0684, -2.9917, 3.0463**.

A 20% lighter version of the original color is **77.9081, 16.0097, 16.6321**, and **35.5704, 14.2557, 11.0724** is the 20% darker color. If you saturate the color by 10%, you get **50.8898, 21.3820, 16.2866**, and if you desaturate by 10%, it is **59.9555, 9.6334, 11.2569**.

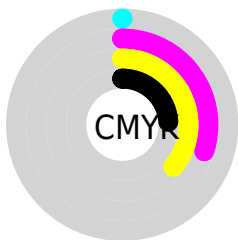
Distribution



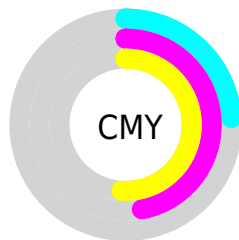
- Red (76%)
- Green (53%)
- Blue (49%)



- Red (76%)
- Yellow (54%)
- Blue (49%)



- Cyan (0%)
- Magenta (30%)
- Yellow (36%)
- Black (24%)



- Cyan (24%)
- Magenta (47%)
- Yellow (51%)

Brightness & Saturation Gradients

These gradients show how the HunterLab color 55.2566, 15.3643, 13.8571 changes by changing the brightness by 10 percent. The first figure shows a shift by +10% for each color and the second figure -10%.

Similar to the brightness gradients but the following saturation gradients show a change of the HunterLab color 55.2566, 15.3643, 13.8571 by changing the saturation by 10% instead.

■ 55.2566, 15.3643,
13.8571

■ 55.2566, 15.3643,
13.8571

174.4670, 16.6933,
26.4432

■ 44.9939, 14.8489,
12.4063

■ 77.7858, 16.1195,
16.6895

■ 35.4583, 14.2304,
10.9135

■ 89.9762, 16.3822,
18.0857

■ 26.7117, 13.4904,
9.3581

■ 102.7442, 16.5767,
19.4760

■ 18.8328, 12.6087,
7.7047

116.0649, 16.7087,
20.8642

■ 11.9307, 11.5631,
6.4232

129.9161, 16.7827,
22.2530

■ 4.8361, 18.3328,
3.3853

144.2783, 16.8025,

0.0000, NaN, NaN

23.6447

0.0000, NaN, NaN

159.1339, 16.7718,
25.0410

0.0000, NaN, NaN

■ 55.2566, 15.3643,
13.8571

■ 55.2566, 15.3643,
13.8571

■ 50.8898, 21.3820,
16.2866

■ 59.9555, 9.6334,
11.2569

■ 46.9049, 27.6388,
18.4697

■ 64.9367, 4.2081,
8.5353

■ 43.3643, 34.0083,
20.3111

■ 70.1637, -0.9273,
5.7287

■ 40.3329, 40.2719,
21.6971

■ 75.6051, -5.7975,
2.8607

■ 37.8708, 46.1063,
22.5195

■ 81.2354, -10.4317,
-0.0533

■ 36.0201, 51.1114,
22.7309

■ 87.0334, -14.8590,
-3.0033

■ 35.4571, 52.7287,
22.7716

■ 92.8131, -20.0568,
-3.5966

■ 94.9786, -23.2711,
-0.9405

Harmonies

Analogous

The Analogous color harmony consists of three colors that are next to each other on the color wheel.



55.2579, 20.0381, 5.3110



55.2566, 15.3643, 13.8571



55.2579, 5.8313, 18.6647

Triad

The Triadic color harmony groups three colors that are evenly spaced from another and form a triangle on the color wheel.



55.2579, 15.3619, 13.8580



55.2579, -21.3129, 10.5159



55.2579, -0.4544, -21.3742

Complementary

The Complementary color scheme is a pair of colors which are on the opposite of each other on the color wheel.



55.2566, 15.3643, 13.8571



64.5248, -16.7118, -7.4309

Split Complementary

Split-complementary colors differ from the complementary color scheme. The scheme consists of three colors, the original color and two neighbors of the complement color.



55.2579, -11.2176, -19.2193



55.2566, 15.3643, 13.8571



55.2579, -22.7053, 0.6011

Square

The Square scheme is like the rectangle color scheme, but the four colors are evenly spaced on the color wheel.



55.2579, 15.3619, 13.8580



55.2579, -15.1858, 17.0199



55.2579, -19.1522, -10.6170



55.2579, 10.4498, -16.0279

Rectangle

The Rectangle color scheme consists of four colors that form a rectangle on the color wheel.



55.2566, 15.3643, 13.8571



55.2579, -1.6792, 19.7610



55.2579, -19.1522, -10.6170



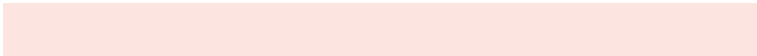
55.2579, -4.2122, -21.5166

Sweetspot

The Sweet Spot groups the original color and five complimentary colors.



55.2579, 15.3619, 13.8580



90.8197, 2.2250, 9.6468



54.1075, 30.4558, -14.8193



42.0461, 1.4907, 4.7586

0.0000, NaN, NaN



46.2646, -2.4686, 2.5136

Same Dimension

The Same Dimension uses a secret algorithm to generate beautiful new colors.



55.2579, 15.3619, 13.8580



69.8652, 26.8025, 21.1633



64.7494, -1.9748, 22.4023



32.1728, 0.3429, 3.1309



28.8965, 42.2882, 18.5462



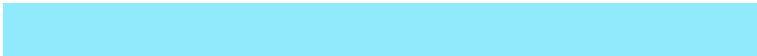
6.7024, 6.7460, 4.2481

Inverse Universe

The Inverse Universe completely reimagines the original color for something new.



64.5248, -16.7118, -7.4309



84.6925, -24.9131, -12.9836



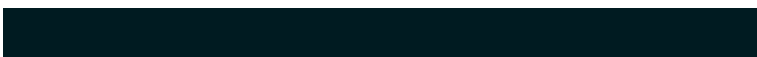
53.9924, -0.1468, -22.7796



33.3541, -3.6927, 0.4282



44.0040, -16.9573, -18.3953



9.5709, -4.0798, -3.1557

Previews

White Background



This preview shows how the HunterLab color 55.2566, 15.3643, 13.8571 looks on a white background.

Color Contrast Check

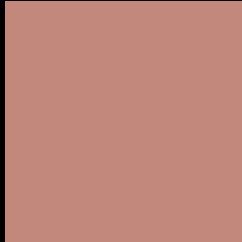
Large Text (above 18pt) WCAG AA × Fail

Any Text WCAG AA × Fail

Large Text (above 18pt) WCAG AAA × Fail

Any Text WCAG AAA × Fail

Black Background



This preview shows how the HunterLab color 55.2566, 15.3643, 13.8571 looks on a black background.

Color Contrast Check

Large Text (above 18pt) WCAG AA ✓ Pass

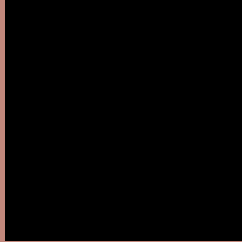
Any Text WCAG AA ✓ Pass

Large Text (above 18pt) WCAG AAA ✓ Pass

Any Text WCAG AAA ✓ Pass

If you want to check with other color combinations, try the [Color Contrast Checker](#).

HunterLab 55.2566, 15.3643, 13.8571 Background



This preview shows how black text looks on a background with the HunterLab color 55.2566, 15.3643, 13.8571.



This preview shows how white text looks on a background with the HunterLab color 55.2566, 15.3643,

Color Blindness Simulation

Color vision deficiency is a very complex topic, and I could not describe the different causes any better than Wikipedia does, so if you want to learn more, you should check out their [article about color blindness](#).

Dichromacy



Original Color

55.2566, 15.3643, 13.8571

Protanopia

55.4261, -3.2672, 11.1264

Deuteranopia

55.4706, 3.7034, 14.5655



Tritanopia

55.2214, 20.0875, 6.4776

Trichromacy



Original Color

55.2566, 15.3643, 13.8571

Protanomaly

55.1971, 3.0606, 12.1294

Deuteranomaly

55.4267, 7.7961, 14.2451

Tritanomaly

55.1633, 18.2550, 9.2759

Monochromacy



Original Color

55.2566, 15.3643, 13.8571

Achromatopsia

56.0347, -2.9899, 3.0445

Achromatomaly

55.4313, 3.1363, 6.8387

CSS Examples

Text

The CSS property to change the color of the text to HunterLab 55.2566, 15.3643, 13.8571 is called "color". The color property can be set on classes, ids or directly on the HTML element.

This example shows how text in the color `rgb(194, 136, 124)` looks like.

```
.text, #text, p{  
    color:rgb(194, 136, 124)  
}
```

If you want to add a text shadow in that color use the text-shadow property, you can generate a text shadow directly with our [CSS Text Shadow Generator](#).

Here you see how black text with a 4 pixel rgb(194, 136, 124) colored shadow looks like.

```
.shadow{ text-shadow: 4px 4px 2px rgb(194, 136, 124) }
```

Border

The CSS property to change the border of an element to HunterLab 55.2566, 15.3643, 13.8571 is called "border". The border property can be set on classes, ids or directly on the HTML element.

This example shows the color as border, it can be applied via the CSS property "border" or "border-color".

```
.border, #border, table{ border:4px solid rgb(194, 136, 124) }
```


If only the border color should be changed use the property `border-color`.

```
.border{ border-color:rgb(194, 136, 124) }
```

If you want to add a box shadow in that color use:

Here you see how a box with a 4 pixel `rgb(194, 136, 124)` colored shadow looks like.

```
.boxshadow{ -moz-box-shadow:4px 4px 4px  
4px rgb(194, 136, 124); -webkit-box-  
shadow:4px 4px 4px 4px rgb(194, 136, 124);  
box-shadow:4px 4px 4px 4px rgb(194, 136,  
124) }
```

Background

The CSS property to change the background color of an element to HunterLab 55.2566, 15.3643, 13.8571 is called "background". The background property can be set on classes, ids or directly on the HTML element.

```
.background, #background, body{  
background: rgb(194, 136, 124) }
```

If only the background color should be changed can be used:

```
.background{ background-color: rgb(194,  
136, 124) }
```

This example shows the color as background, it is applied via the CSS property "background".

To optimize and compress your CSS code, you can use our [online CSS compressor and optimizer](#) based on csstidy. If you want to create a linear or radial gradient as background or border, check our [CSS Gradient Generator](#).

Hey! You found this booklet interesting? Support Converting Colors with the new Membership Option!

The pro membership hides all ads, plus gives you double the colors in the color bucket, and more awesome pro features!

[Learn more, Memberships starting at \\$2.50/m!](#)

**Follow me
on Twitter!**

@ConvertingColor