

Converting Colors

HunterLab(55.2832, 3.0171,
9.9878)

Have a look what the booklet for
HunterLab(55.2832, 3.0171, 9.9878)
contains.

HunterLab(55.1426, 3.1718, 9.7835)	3
<i>Conversions</i>	4
<i>Details</i>	6
<i>Harmonies</i>	12
<i>Previews</i>	24
<i>Color Blindness Simulation</i>	28
<i>CSS Examples</i>	31

Color

**HunterLab(55.1426, 3.1718,
9.7835)**

Conversions

Conversions Part 1

Format	Color
Hex	A99186
RGB	169, 145, 134
RGB Percent	66%, 57%, 53%
CMY	0.3373, 0.4314, 0.4745
CMYK	0.00, 0.14, 0.21, 0.34
HSL	19°, 17%, 59%
HSV	19°, 21%, 66%
XYZ	30.7907, 30.4071, 26.8006
YIQ	150.9220, 17.8350, 1.6670

Conversions

Conversions Part 2

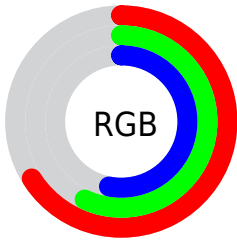
Format	Color
RYB	169, 150, 134
Decimal	11112838
CIELab	62.01, 7.17, 9.15
CIELCh	62, 11.626, 51.910
Yxy	30.4084, 0.3499, 0.3455
Android (android.graphics.Color)	4289302918 (0xFFA99186)
YUV	150.9220, -8.3425, 15.8544
Hunter-Lab	55.1426, 3.1718, 9.7835

Details

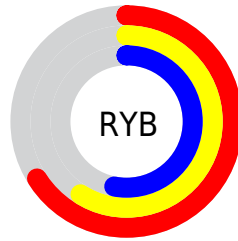
The HunterLab color $55.1426, 3.1718, 9.7835$ is a light color, and the websafe version is hex 999999 . A complement of this color would be $56.9086, -7.9395, -4.1793$, and the grayscale version is $55.6270, -2.9681, 3.0223$.

A 20% lighter version of the original color is $77.7446, 2.7260, 12.0998$, and $35.4084, 3.0409, 7.8271$ is the 20% darker color. If you saturate the color by 10%, you get $51.5862, 6.6933, 12.5256$, and if you desaturate by 10%, it is $58.8575, -0.1053, 6.8150$.

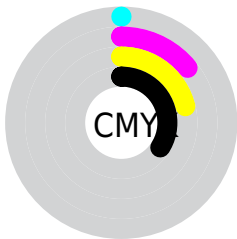
Distribution



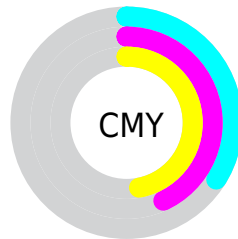
- Red (66%)
- Green (57%)
- Blue (53%)



- Red (66%)
- Yellow (59%)
- Blue (53%)



- Cyan (0%)
- Magenta (14%)
- Yellow (21%)
- Black (34%)



- Cyan (34%)
- Magenta (43%)
- Yellow (47%)

Brightness & Saturation Gradients

These gradients show how the HunterLab color 55.1426, 3.1718, 9.7835 changes by changing the brightness by 10 percent. The first figure shows a shift by +10% for each color and the second figure -10%.

Similar to the brightness gradients but the following saturation gradients show a change of the HunterLab color 55.1426, 3.1718, 9.7835 by changing the saturation by 10% instead.

■ 55.1426, 3.1718,
9.7835

■ 55.1426, 3.1718,
9.7835

174.2996, -0.4363,
19.8174

■ 44.8874, 3.3302,
8.7118

■ 77.6579, 2.6772,
11.9383

■ 35.3600, 3.4234,
7.6345

■ 89.8419, 2.3550,
13.0267

■ 26.6222, 3.4392,
6.5421

■ 102.6039, 1.9875,
14.1258

■ 18.7532, 3.3627,
5.4171

115.9187, 1.5778,
15.2368

■ 11.8623, 3.1709,
4.2681

129.7644, 1.1285,
16.3609

■ 4.7114, 6.3814,
3.2980

144.1212, 0.6418,

0.0000, NaN, NaN

17.4987

0.0000, NaN, NaN

158.9716, 0.1196,
18.6507

0.0000, NaN, NaN

■ 55.1426, 3.1718,
9.7835

■ 55.1426, 3.1718,
9.7835

■ 51.5862, 6.6933,
12.5256

■ 58.8575, -0.1053,
6.8150

■ 48.2042, 10.4800,
14.9945

■ 62.7104, -3.1528,
3.6532

■ 45.0208, 14.5360,
17.1382

■ 66.6881, -5.9941,
0.3277

■ 42.0617, 18.8505,
18.8951

■ 70.7785, -8.6506,
-3.1384

■ 39.3557, 23.3859,
20.1987

■ 74.9710, -11.1425,
-6.7268

■ 36.9330, 28.0664,
20.9862

■ 79.2568, -13.4882,
-10.4228

■ 34.8232, 32.7662,
21.2167

■ 83.6283, -15.7043,
-14.2143

■ 33.1560, 36.9519,
21.0775

■ 87.5385, -20.8552,
-10.5023

■ 91.4244, -26.4915,
-5.4829

Harmonies

Analogous

The Analogous color harmony consists of three colors that are next to each other on the color wheel.



55.1438, 6.3503, 6.3366



55.1426, 3.1718, 9.7835



55.1438, -1.5730, 11.3816

Triad

The Triadic color harmony groups three colors that are evenly spaced from another and form a triangle on the color wheel.



55.1438, 3.1700, 9.7843



55.1438, -12.2282, 4.2850



55.1438, 0.7230, -6.2685

Complementary

The Complementary color scheme is a pair of colors which are on the opposite of each other on the color wheel.



55.1426, 3.1718, 9.7835



56.9086, -7.9395, -4.1793

Split Complementary

Split-complementary colors differ from the complementary color scheme. The scheme consists of three colors, the original color and two neighbors of the complement color.



55.1438, -4.3043, -6.9428



55.1426, 3.1718, 9.7835



55.1438, -11.6632, -0.5556

Square

The Square scheme is like the rectangle color scheme, but the four colors are evenly spaced on the color wheel.



55.1438, 3.1700, 9.7843



55.1438, -10.3773, 8.3983



55.1438, -8.8052, -4.7697



55.1438, 4.9025, -3.0024

Rectangle

The Rectangle color scheme consists of four colors that form a rectangle on the color wheel.



55.1426, 3.1718, 9.7835



55.1438, -4.9339, 11.2921



55.1438, -8.8052, -4.7697



55.1438, -0.9281, -6.8169

Sweetspot

The Sweet Spot groups the original color and five complimentary colors.



55.1438, 3.1700, 9.7843



81.1176, -2.0540, 7.2023



52.8881, 12.4177, -3.7104



37.7230, -0.8415, 3.4833



92.0917, -4.9138, 5.0035



39.3538, -2.0998, 2.1382

Same Dimension

The Same Dimension uses a secret algorithm to generate beautiful new colors.



55.1438, 3.1700, 9.7843



71.5135, 6.4333, 14.8734



59.9977, -5.0741, 14.5928



28.1298, -0.2621, 3.0190



28.7743, 31.4758, 18.2816



5.4053, 2.6373, 3.3769

Inverse Universe

The Inverse Universe completely reimagines the original color for something new.



56.9086, -7.9395, -4.1793



74.3940, -11.7331, -7.9408



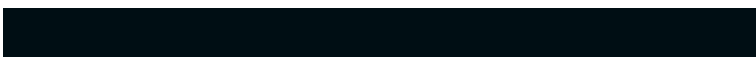
51.9452, 0.2206, -10.8315



28.5101, -2.6496, 0.0145



33.9423, -6.6505, -28.0685



6.0470, -2.1187, -2.9846

Previews

White Background



This preview shows how the HunterLab color 55.1426, 3.1718, 9.7835 looks on a white background.

Color Contrast Check

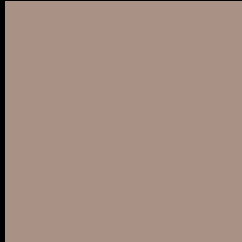
Large Text (above 18pt) WCAG AA × Fail

Any Text WCAG AA × Fail

Large Text (above 18pt) WCAG AAA × Fail

Any Text WCAG AAA × Fail

Black Background



This preview shows how the HunterLab color 55.1426, 3.1718, 9.7835 looks on a black background.

Color Contrast Check

Large Text (above 18pt) WCAG AA ✓ Pass

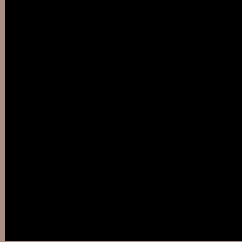
Any Text WCAG AA ✓ Pass

Large Text (above 18pt) WCAG AAA ✓ Pass

Any Text WCAG AAA ✓ Pass

If you want to check with other color combinations, try the [Color Contrast Checker](#).

HunterLab 55.1426, 3.1718, 9.7835 Background



This preview shows how black text looks on a background with the HunterLab color 55.1426, 3.1718, 9.7835.



This preview shows how white text looks on a background with the HunterLab color 55.1426, 3.1718,

Color Blindness Simulation

Color vision deficiency is a very complex topic, and I could not describe the different causes any better than Wikipedia does, so if you want to learn more, you should check out their [article about color blindness](#).

Dichromacy



Original Color

55.1426, 3.1718, 9.7835

Protanopia

55.0821, -2.7344, 8.8215

Deuteranopia

55.2432, 3.5102, 9.8956



Tritanopia

55.0489, 8.1314, 1.6044

Trichromacy



Original Color

55.1426, 3.1718, 9.7835

Protanomaly

55.2324, -0.7981, 9.4144

Deuteranomaly

55.2432, 3.5102, 9.8956

Tritanomaly

55.0148, 6.2150, 4.7013

Monochromacy



Original Color

55.1426, 3.1718, 9.7835

Achromatopsia

55.6299, -2.9683, 3.0225

Achromatomaly

55.5052, -0.7892, 5.5736

CSS Examples

Text

The CSS property to change the color of the text to HunterLab 55.1426, 3.1718, 9.7835 is called "color". The color property can be set on classes, ids or directly on the HTML element.

This example shows how text in the color `rgb(169, 145, 134)` looks like.

```
.text, #text, p{  
    color:rgb(169, 145, 134)  
}
```

If you want to add a text shadow in that color use the text-shadow property, you can generate a text shadow directly with our [CSS Text Shadow Generator](#).

Here you see how black text with a 4 pixel rgb(169, 145, 134) colored shadow looks like.

```
.shadow{ text-shadow: 4px 4px 2px rgb(169, 145, 134) }
```

Border

The CSS property to change the border of an element to HunterLab 55.1426, 3.1718, 9.7835 is called "border".

The border property can be set on classes, ids or directly on the HTML element.

This example shows the color as border, it can be applied via the CSS property "border" or "border-color".

```
.border, #border, table{ border:4px solid rgb(169, 145, 134) }
```


If only the border color should be changed use the property `border-color`.

```
.border{ border-color:rgb(169, 145, 134) }
```

If you want to add a box shadow in that color use:

Here you see how a box with a 4 pixel `rgb(169, 145, 134)` colored shadow looks like.

```
.boxshadow{ -moz-box-shadow:4px 4px 4px  
4px rgb(169, 145, 134); -webkit-box-  
shadow:4px 4px 4px 4px rgb(169, 145, 134);  
box-shadow:4px 4px 4px 4px rgb(169, 145,  
134) }
```

Background

The CSS property to change the background color of an element to HunterLab 55.1426, 3.1718, 9.7835 is called "background". The background property can be set on classes, ids or directly on the HTML element.

```
.background, #background, body{  
background: rgb(169, 145, 134) }
```

If only the background color should be changed can be used:

```
.background{ background-color: rgb(169,  
145, 134) }
```

This example shows the color as background, it is applied via the CSS property "background".

To optimize and compress your CSS code, you can use our [online CSS compressor and optimizer](#) based on csstidy. If you want to create a linear or radial gradient as background or border, check our [CSS Gradient Generator](#).

Hey! You found this booklet interesting? Support Converting Colors with the new Membership Option!

The pro membership hides all ads, plus gives you double the colors in the color bucket, and more awesome pro features!

[Learn more, Memberships starting at \\$2.50/m!](#)

**Follow me
on Twitter!**

@ConvertingColor