

# Converting Colors

HunterLab(55.3213, 7.2274,  
5.0703)

Have a look what the booklet for  
HunterLab(55.3213, 7.2274, 5.0703)  
contains.

<b>HunterLab(55.3213, 7.2274, 5.0703)</b> .....	3
<b><i>Conversions</i></b> .....	4
<b><i>Details</i></b> .....	6
<b><i>Harmonies</i></b> .....	12
<b><i>Previews</i></b> .....	24
<b><i>Color Blindness Simulation</i></b> .....	28
<b><i>CSS Examples</i></b> .....	31

# Color

**HunterLab(55.3213, 7.2274,  
5.0703)**

# Conversions

## Conversions Part 1

Format	Color
Hex	AD8F92
RGB	173, 143, 146
RGB Percent	68%, 56%, 57%
CMY	0.3216, 0.4392, 0.4274
CMYK	0.00, 0.17, 0.16, 0.32
HSL	354°, 15%, 62%
HSV	354°, 17%, 68%
XYZ	32.2443, 30.6045, 31.4019
YIQ	152.3120, 16.9170, 7.2930

# Conversions

## Conversions Part 2

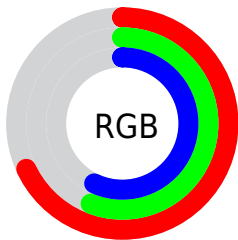
<b>Format</b>	<b>Color</b>
R <sub>Y</sub> B	173, 143, 146
Decimal	11374482
CIE Lab	62.17, 11.77, 2.64
CIE LCh	62, 12.060, 12.658
Yxy	30.6058, 0.3421, 0.3247
Android (android.graphics.Color)	4289564562 (0xFFAD8F92)
YUV	152.3120, -3.1118, 18.1434
Hunter-Lab	55.3213, 7.2274, 5.0703

# Details

The HunterLab color **55.3213, 7.2274, 5.0703** is a light color, and the websafe version is hex **CC9999**. A complement of this color would be **62.1529, -12.4763, 1.7996**, and the grayscale version is **56.1695, -2.9971, 3.0518**.

A 20% lighter version of the original color is **77.9491, 7.1800, 6.5943**, and **35.5897, 6.7883, 3.6133** is the 20% darker color. If you saturate the color by 10%, you get **50.3525, 13.6778, 6.2205**, and if you desaturate by 10%, it is **60.6012, 0.9899, 4.1112**.

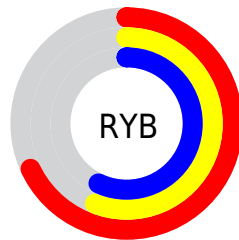
# Distribution



Red (68%)

Green (56%)

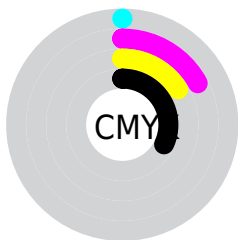
Blue (57%)



Red (68%)

Yellow (56%)

Blue (57%)

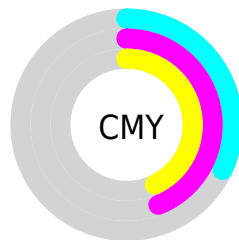


Cyan (0%)

Magenta (17%)

Yellow (16%)

Black (32%)



Cyan (32%)

Magenta (44%)

Yellow (43%)

# Brightness & Saturation Gradients

These gradients show how the HunterLab color 55.3213, 7.2274, 5.0703 changes by changing the brightness by 10 percent. The first figure shows a shift by +10% for each color and the second figure -10%.

Similar to the brightness gradients but the following saturation gradients show a change of the HunterLab color 55.3213, 7.2274, 5.0703 by changing the saturation by 10% instead.



■ 55.3213, 7.2274,  
5.0703

■ 55.3213, 7.2274,  
5.0703

174.5618, 5.3343,  
12.5552

■ 45.0543, 7.1489,  
4.3705

■ 77.8582, 7.1701,  
6.5557

■ 35.5141, 6.9899,  
3.6980

■ 90.0522, 7.0516,  
7.3382

■ 26.7624, 6.7353,  
3.0540

■ 102.8237, 6.8793,  
8.1466

■ 18.8780, 6.3661,  
2.4375

116.1476, 6.6575,  
8.9802

■ 11.9694, 5.8543,  
1.8453

130.0020, 6.3894,  
9.8385

■ 4.9053, 10.1908,  
2.5002

144.3673, 6.0778,

0.0000, NaN, NaN

10.7208

0.0000, NaN, NaN

159.2258, 5.7254,  
11.6265

0.0000, NaN, NaN

■ 55.3213, 7.2274,  
5.0703

■ 55.3213, 7.2274,  
5.0703

■ 50.3525, 13.6778,  
6.2205

■ 60.6012, 0.9899,  
4.1112

■ 45.7487, 20.3136,  
7.5809

■ 66.1422, -5.0316,  
3.3150

■ 41.5820, 27.0353,  
9.1623

■ 71.9092, -10.8575,  
2.6584

■ 37.9359, 33.6396,  
10.9477

■ 77.8728, -16.5125,  
2.1199

■ 34.9011, 39.7810,  
12.8731

■ 84.0100, -22.0220,  
1.6812

■ 32.5605, 44.9790,  
14.8119

■ 90.3016, -27.4099,  
1.3269

■ 30.9645, 48.7268,  
16.5821

■ 93.6078, -28.3411,  
-2.7388

■ 30.0666, 50.8210,  
17.9763

■ 29.8758, 51.3017,  
18.2319

# Harmonies

## Analogous

The Analogous color harmony consists of three colors that are next to each other on the color wheel.



55.3225, 6.9975, 0.0768



55.3213, 7.2274, 5.0703



55.3225, 4.6534, 9.1218

# Triad

The Triadic color harmony groups three colors that are evenly spaced from another and form a triangle on the color wheel.



55.3225, 7.2256, 5.0712



55.3225, -9.6196, 9.6079



55.3225, -5.9269, -6.9437

# Complementary

The Complementary color scheme is a pair of colors which are on the opposite of each other on the color wheel.



55.3213, 7.2274, 5.0703



62.1529, -12.4763, 1.7996

# Split Complementary

Split-complementary colors differ from the complementary color scheme. The scheme consists of three colors, the original color and two neighbors of the complement color.



55.3225, -10.1730, -3.8868



55.3213, 7.2274, 5.0703



55.3225, -12.2498, 5.7934

# Square

The Square scheme is like the rectangle color scheme, but the four colors are evenly spaced on the color wheel.



55.3225, 7.2256, 5.0712



55.3225, -5.1460, 11.5724



55.3225, -12.4485, 0.8691



55.3225, -0.7291, -7.1830



# Rectangle

The Rectangle color scheme consists of four colors that form a rectangle on the color wheel.



55.3213, 7.2274, 5.0703



55.3225, 1.7505, 10.8683



55.3225, -12.4485, 0.8691



55.3225, -7.5080, -6.1993

# Sweetspot

The Sweet Spot groups the original color and five complimentary colors.



55.3225, 7.2256, 5.0712



82.7411, -0.5139, 5.2440



55.8655, 10.6917, -7.3477



38.3408, 0.0179, 2.4803



93.2148, -4.9737, 5.0645



40.3295, -2.1519, 2.1912



# Same Dimension

The Same Dimension uses a secret algorithm to generate beautiful new colors.



55.3225, 7.2256, 5.0712



71.3032, 13.1142, 7.3739



58.5758, 0.8390, 9.8036



28.3335, 1.0464, 2.0397



25.6152, 44.0018, 15.5056



4.3196, 7.5138, 1.8896



# Inverse Universe

The Inverse Universe completely reimagines the original color for something new.



55.3225, 7.2256, 5.0712



71.3032, 13.1142, 7.3739



58.6068, -6.2669, -3.9927



28.3335, 1.0464, 2.0397



25.6152, 44.0018, 15.5056

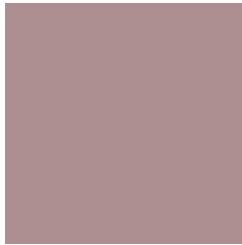


4.3196, 7.5138, 1.8896



# Previews

## White Background



This preview shows how the HunterLab color 55.3213, 7.2274, 5.0703 looks on a white background.

## Color Contrast Check

Large Text (above 18pt) WCAG AA × Fail

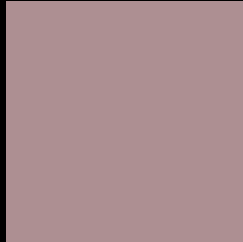
Any Text WCAG AA × Fail

Large Text (above 18pt) WCAG AAA × Fail

Any Text WCAG AAA × Fail



# Black Background



This preview shows how the HunterLab color 55.3213, 7.2274, 5.0703 looks on a black background.

## Color Contrast Check

Large Text (above 18pt) WCAG AA ✓ Pass

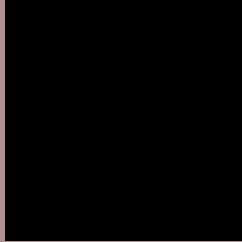
Any Text WCAG AA ✓ Pass

Large Text (above 18pt) WCAG AAA ✓ Pass

Any Text WCAG AAA ✓ Pass

If you want to check with other color combinations, try the [Color Contrast Checker](#).

## HunterLab 55.3213, 7.2274, 5.0703 Background



This preview shows how black text looks on a background with the HunterLab color 55.3213, 7.2274, 5.0703.



This preview shows how white text looks on a background with the HunterLab color 55.3213, 7.2274,



# Color Blindness Simulation

Color vision deficiency is a very complex topic, and I could not describe the different causes any better than Wikipedia does, so if you want to learn more, you should check out their [article about color blindness](#).

## Dichromacy



### Original Color

55.3213, 7.2274, 5.0703

### Protanopia

55.4860, -2.0431, 3.3222

### Deuteranopia

55.2645, 4.2225, 4.9526



## Tritanopia

55.3575, 9.1402, 1.9932

# Trichromacy



## Original Color

55.3213, 7.2274, 5.0703

## Protanomaly

55.2367, 1.4317, 3.5414

## Deuteranomaly

55.1877, 5.3824, 4.8851

## Tritanomaly

55.2691, 8.6744, 3.2550

# Monochromacy



## Original Color

55.3213, 7.2274, 5.0703

## Achromatopsia

56.0347, -2.9899, 3.0445

## Achromatomaly

55.8305, 0.6087, 3.7711

# CSS Examples

## Text

The CSS property to change the color of the text to HunterLab 55.3213, 7.2274, 5.0703 is called "color". The color property can be set on classes, ids or directly on the HTML element.

This example shows how text in the color `rgb(173, 143, 146)` looks like.

```
.text, #text, p{  
    color:rgb(173, 143, 146)  
}
```

If you want to add a text shadow in that color use the text-shadow property, you can generate a text shadow directly with our [CSS Text Shadow Generator](#).

Here you see how black text with a 4 pixel rgb(173, 143, 146) colored shadow looks like.

```
.shadow{ text-shadow: 4px 4px 2px rgb(173, 143, 146) }
```

## Border

The CSS property to change the border of an element to HunterLab 55.3213, 7.2274, 5.0703 is called "border".

The border property can be set on classes, ids or directly on the HTML element.

This example shows the color as border, it can be applied via the CSS property "border" or "border-color".

```
.border, #border, table{ border:4px solid rgb(173, 143, 146) }
```



If only the border color should be changed use the property `border-color`.

```
.border{ border-color:rgb(173, 143, 146) }
```

If you want to add a box shadow in that color use:

Here you see how a box with a 4 pixel `rgb(173, 143, 146)` colored shadow looks like.

```
.boxshadow{ -moz-box-shadow:4px 4px 4px  
4px rgb(173, 143, 146); -webkit-box-  
shadow:4px 4px 4px 4px rgb(173, 143, 146);  
box-shadow:4px 4px 4px 4px rgb(173, 143,  
146) }
```

# Background

The CSS property to change the background color of an element to HunterLab 55.3213, 7.2274, 5.0703 is called "background". The background property can be set on classes, ids or directly on the HTML element.

```
.background, #background, body{  
background: rgb(173, 143, 146) }
```

If only the background color should be changed can be used:

```
.background{ background-color: rgb(173,  
143, 146) }
```

This example shows the color as background, it is applied via the CSS property "background".

To optimize and compress your CSS code, you can use our [online CSS compressor and optimizer](#) based on csstidy. If you want to create a linear or radial gradient as background or border, check our [CSS Gradient Generator](#).

Hey! You found this booklet interesting? Support Converting Colors with the new Membership Option!

The pro membership hides all ads, plus gives you double the colors in the color bucket, and more awesome pro features!

**[Learn more, Memberships starting at \\$2.50/m!](#)**

**Follow me  
on Twitter!**

@ConvertingColor