

Converting Colors

HunterLab(55.3346, 13.7000,
18.5305)

Have a look what the booklet for
HunterLab(55.3346, 13.7000,
18.5305) contains.

HunterLab(55.3346, 13.7000, 18.5305)	3
<i>Conversions</i>	4
<i>Details</i>	6
<i>Harmonies</i>	12
<i>Previews</i>	24
<i>Color Blindness Simulation</i>	28
<i>CSS Examples</i>	31

Color

**HunterLab(55.3346, 13.7000,
18.5305)**

Conversions

Conversions Part 1

Format	Color
Hex	C3896E
RGB	195, 137, 110
RGB Percent	76%, 54%, 43%
CMY	0.2353, 0.4627, 0.5686
CMYK	0.00, 0.30, 0.44, 0.24
HSL	19°, 41%, 60%
HSV	19°, 44%, 76%
XYZ	34.2658, 30.6192, 18.8559
YIQ	151.2640, 43.2350, 3.8990

Conversions

Conversions Part 2

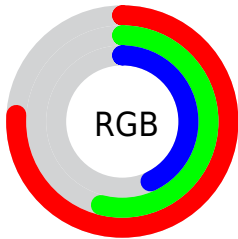
Format	Color
RYB	195, 150, 110
Decimal	12814702
CIELab	62.19, 18.85, 23.32
CIELCh	62, 29.990, 51.052
Yxy	30.6207, 0.4092, 0.3656
Android (android.graphics.Color)	4291004782 (0xFFC3896E)
YUV	151.2640, -20.3432, 38.3565
Hunter-Lab	55.3346, 13.7000, 18.5305

Details

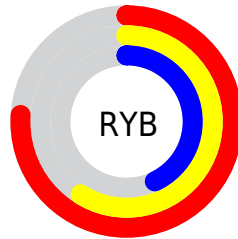
The HunterLab color **55.3346, 13.7000, 18.5305** is a dark color, and the websafe version is hex **CC9966**. A complement of this color would be **59.3792, -12.8806, -15.1885**, and the grayscale version is **55.8052, -2.9776, 3.0320**.

A 20% lighter version of the original color is **77.9441, 13.9668, 22.2717**, and **35.5713, 12.6461, 14.5440** is the 20% darker color. If you saturate the color by 10%, you get **51.6615, 18.5780, 20.9289**, and if you desaturate by 10%, it is **59.2555, 9.1385, 15.7169**.

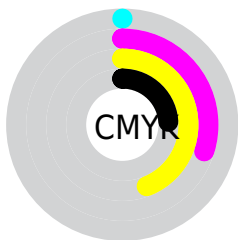
Distribution



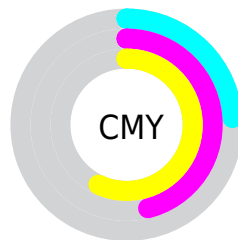
- Red (76%)
- Green (54%)
- Blue (43%)



- Red (76%)
- Yellow (59%)
- Blue (43%)



- Cyan (0%)
- Magenta (30%)
- Yellow (44%)
- Black (24%)



- Cyan (24%)
- Magenta (46%)
- Yellow (57%)

Brightness & Saturation Gradients

These gradients show how the HunterLab color 55.3346, 13.7000, 18.5305 changes by changing the brightness by 10 percent. The first figure shows a shift by +10% for each color and the second figure -10%.

Similar to the brightness gradients but the following saturation gradients show a change of the HunterLab color 55.3346, 13.7000, 18.5305 by changing the saturation by 10% instead.

■ 55.3346, 13.7000,
18.5305

■ 55.3346, 13.7000,
18.5305

174.5815, 14.3891,
34.5696

■ 45.0668, 13.2701,
16.5609

■ 77.8732, 14.2946,
22.2865

■ 35.5256, 12.7413,
14.4990

■ 90.0679, 14.4817,
24.1005

■ 26.7729, 12.0953,
12.3098

■ 102.8401, 14.6035,
25.8853

■ 18.8873, 11.3111,
9.9380

■ 116.1648, 14.6651,
27.6479

■ 11.9775, 10.3638,
8.3842

130.0198, 14.6710,
29.3938

■ 4.9195, 16.4357,
3.4436

144.3857, 14.6249,

0.0000, NaN, NaN

31.1271

0.0000, NaN, NaN

159.2449, 14.5300,
32.8515

0.0000, NaN, NaN

■ 55.3346, 13.7000,
18.5305

■ 55.3346, 13.7000,
18.5305

■ 51.6615, 18.5780,
20.9289

■ 59.2555, 9.1385,
15.7169

■ 48.2643, 23.7585,
22.8329

■ 63.3919, 4.8990,
12.5532

■ 45.1793, 29.1811,
24.1635

■ 67.7204, 0.9629,
9.0972

■ 42.4427, 34.7366,
24.8521

■ 72.2199, -2.6930,
5.3950

■ 40.0881, 40.2522,
24.8683

■ 76.8726, -6.0944,
1.4842

■ 38.7841, 43.6239,
24.6623

■ 81.6630, -9.2674,
-2.6054

■ 86.5781, -12.2369,
-6.8498

■ 91.2081, -17.2591,
-5.6001

■ 95.0484, -23.0148,
-0.8496

Harmonies

Analogous

The Analogous color harmony consists of three colors that are next to each other on the color wheel.



55.3359, 22.4313, 10.9103



55.3346, 13.7000, 18.5305



55.3359, 0.9970, 21.7673

Triad

The Triadic color harmony groups three colors that are evenly spaced from another and form a triangle on the color wheel.



55.3359, 13.6974, 18.5313



55.3359, -25.6013, 6.5936



55.3359, 6.3384, -24.1781

Complementary

The Complementary color scheme is a pair of colors which are on the opposite of each other on the color wheel.



55.3346, 13.7000, 18.5305



59.3792, -12.8806, -15.1885

Split Complementary

Split-complementary colors differ from the complementary color scheme. The scheme consists of three colors, the original color and two neighbors of the complement color.



55.3359, -6.8002, -26.0948



55.3346, 13.7000, 18.5305



55.3359, -24.4573, -6.2550

Square

The Square scheme is like the rectangle color scheme, but the four colors are evenly spaced on the color wheel.



55.3359, 13.6974, 18.5313



55.3359, -21.1298, 16.0013



55.3359, -17.8459, -18.9235



55.3359, 17.9168, -14.1691

Rectangle

The Rectangle color scheme consists of four colors that form a rectangle on the color wheel.



55.3346, 13.7000, 18.5305



55.3359, -7.6787, 21.6746



55.3359, -17.8459, -18.9235



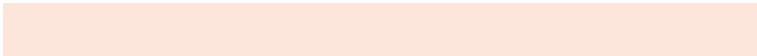
55.3359, 1.9315, -25.8689

Sweetspot

The Sweet Spot groups the original color and five complimentary colors.



55.3359, 13.6974, 18.5313



90.8588, 1.0922, 11.9884



50.5810, 35.5530, -11.6819



41.8981, 1.0482, 6.1128

0.0000, NaN, NaN



46.2646, -2.4686, 2.5136

Same Dimension

The Same Dimension uses a secret algorithm to generate beautiful new colors.



55.3359, 13.6974, 18.5313



69.5103, 24.3363, 27.7802



67.1829, -7.2440, 28.2519



32.5401, -0.2873, 3.5347



31.4830, 34.5603, 20.0047



7.4468, 4.8588, 4.6738

Inverse Universe

The Inverse Universe completely reimagines the original color for something new.



59.3792, -12.8806, -15.1885



75.8921, -18.0730, -25.7933



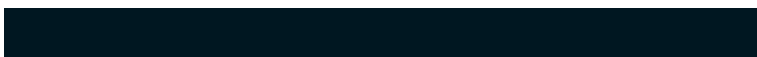
46.9795, 7.7914, -36.0737



32.9716, -3.0757, -0.0295



36.9176, -6.8927, -31.2645



8.4166, -2.5239, -5.0716

Previews

White Background



This preview shows how the HunterLab color 55.3346, 13.7000, 18.5305 looks on a white background.

Color Contrast Check

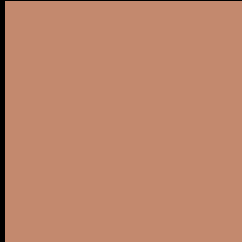
Large Text (above 18pt) WCAG AA × Fail

Any Text WCAG AA × Fail

Large Text (above 18pt) WCAG AAA × Fail

Any Text WCAG AAA × Fail

Black Background



This preview shows how the HunterLab color 55.3346, 13.7000, 18.5305 looks on a black background.

Color Contrast Check

Large Text (above 18pt) WCAG AA ✓ Pass

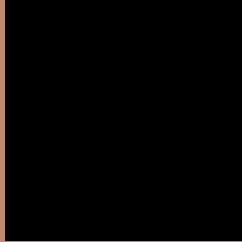
Any Text WCAG AA ✓ Pass

Large Text (above 18pt) WCAG AAA ✓ Pass

Any Text WCAG AAA ✓ Pass

If you want to check with other color combinations, try the [Color Contrast Checker](#).

HunterLab 55.3346, 13.7000, 18.5305 Background



This preview shows how black text looks on a background with the HunterLab color 55.3346, 13.7000, 18.5305.



This preview shows how white text looks on a background with the HunterLab color 55.3346, 13.7000,

Color Blindness Simulation

Color vision deficiency is a very complex topic, and I could not describe the different causes any better than Wikipedia does, so if you want to learn more, you should check out their [article about color blindness](#).

Dichromacy



Original Color

55.3346, 13.7000, 18.5305

Protanopia

55.3631, -4.1690, 16.3465

Deuteranopia

55.3483, 4.1613, 18.6799



Tritanopia

55.4653, 20.8328, 6.7636

Trichromacy



Original Color

55.3346, 13.7000, 18.5305

Protanomaly

55.0908, 2.0782, 16.8500

Deuteranomaly

55.1980, 7.8324, 18.6093

Tritanomaly

55.2804, 18.3658, 11.3548

Monochromacy



Original Color

55.3346, 13.7000, 18.5305

Achromatopsia

55.6299, -2.9683, 3.0225

Achromatomaly

55.2728, 2.2844, 9.1134

CSS Examples

Text

The CSS property to change the color of the text to HunterLab 55.3346, 13.7000, 18.5305 is called "color". The color property can be set on classes, ids or directly on the HTML element.

This example shows how text in the color `rgb(195, 137, 110)` looks like.

```
.text, #text, p{  
    color:rgb(195, 137, 110)  
}
```

If you want to add a text shadow in that color use the text-shadow property, you can generate a text shadow directly with our [CSS Text Shadow Generator](#).

Here you see how black text with a 4 pixel rgb(195, 137, 110) colored shadow looks like.

```
.shadow{ text-shadow: 4px 4px 2px rgb(195, 137, 110) }
```

Border

The CSS property to change the border of an element to HunterLab 55.3346, 13.7000, 18.5305 is called "border". The border property can be set on classes, ids or directly on the HTML element.

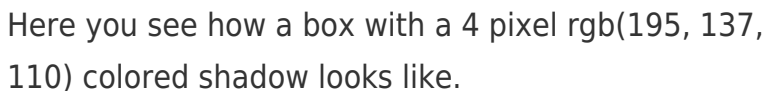
This example shows the color as border, it can be applied via the CSS property "border" or "border-color".

```
.border, #border, table{ border:4px solid rgb(195, 137, 110) }
```


If only the border color should be changed use the property `border-color`.

```
.border{ border-color:rgb(195, 137, 110) }
```

If you want to add a box shadow in that color use:



Here you see how a box with a 4 pixel `rgb(195, 137, 110)` colored shadow looks like.

```
.boxshadow{ -moz-box-shadow:4px 4px 4px 4px rgb(195, 137, 110); -webkit-box-shadow:4px 4px 4px 4px rgb(195, 137, 110); box-shadow:4px 4px 4px 4px rgb(195, 137, 110) }
```

Background

The CSS property to change the background color of an element to HunterLab 55.3346, 13.7000, 18.5305 is called "background". The background property can be set on classes, ids or directly on the HTML element.

```
.background, #background, body{  
background: rgb(195, 137, 110) }
```

If only the background color should be changed can be used:

```
.background{ background-color: rgb(195,  
137, 110) }
```

This example shows the color as background, it is applied via the CSS property "background".

To optimize and compress your CSS code, you can use our [online CSS compressor and optimizer](#) based on csstidy. If you want to create a linear or radial gradient as background or border, check our [CSS Gradient Generator](#).

Hey! You found this booklet interesting? Support Converting Colors with the new Membership Option!

The pro membership hides all ads, plus gives you double the colors in the color bucket, and more awesome pro features!

[Learn more, Memberships starting at \\$2.50/m!](#)

**Follow me
on Twitter!**

@ConvertingColor