

Converting Colors

HunterLab(55.3437, 7.6662,
16.8447)

Have a look what the booklet for
HunterLab(55.3437, 7.6662,
16.8447) contains.

HunterLab(55.4745, 7.6064, 16.9810)	3
<i>Conversions</i>	4
<i>Details</i>	6
<i>Harmonies</i>	12
<i>Previews</i>	24
<i>Color Blindness Simulation</i>	28
<i>CSS Examples</i>	31

Color

**HunterLab(55.4745, 7.6064,
16.9810)**

Conversions

Conversions Part 1

Format	Color
Hex	B88E73
RGB	184, 142, 115
RGB Percent	72%, 56%, 45%
CMY	0.2784, 0.4431, 0.5490
CMYK	0.00, 0.23, 0.37, 0.28
HSL	23°, 33%, 59%
HSV	23°, 37%, 72%
XYZ	32.5347, 30.7742, 20.4450
YIQ	151.4800, 33.6990, 0.5070

Conversions

Conversions Part 2

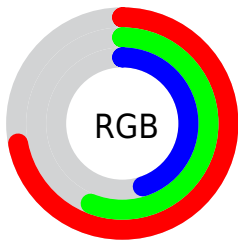
Format	Color
RYB	184, 159, 115
Decimal	12095091
CIELab	62.32, 12.19, 20.50
CIElCh	62, 23.852, 59.270
Yxy	30.7757, 0.3885, 0.3674
Android (android.graphics.Color)	4290285171 (0xFFB88E73)
YUV	151.4800, -17.9846, 28.5200
Hunter-Lab	55.4745, 7.6064, 16.9810

Details

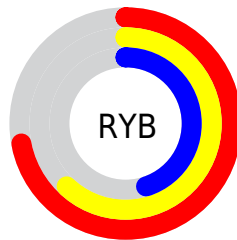
The HunterLab color $55.4745, 7.6064, 16.9810$ is a dark color, and the websafe version is hex $CC9966$. A complement of this color would be $55.8734, -9.0338, -13.8495$, and the grayscale version is $55.8861, -2.9819, 3.0364$.

A 20% lighter version of the original color is $78.0837, 7.3506, 20.4836$, and $35.6745, 7.0871, 13.2811$ is the 20% darker color. If you saturate the color by 10%, you get $52.1791, 11.3023, 19.6103$, and if you desaturate by 10%, it is $58.9442, 4.2103, 13.9278$.

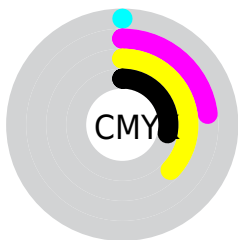
Distribution



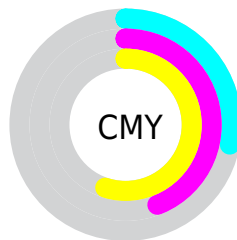
- Red (72%)
- Green (56%)
- Blue (45%)



- Red (72%)
- Yellow (62%)
- Blue (45%)



- Cyan (0%)
- Magenta (23%)
- Yellow (37%)
- Black (28%)





- Cyan (28%)
- Magenta (44%)
- Yellow (55%)

Brightness & Saturation Gradients


These gradients show how the HunterLab color 55.4745, 7.6064, 16.9810 changes by changing the brightness by 10 percent. The first figure shows a shift by +10% for each color and the second figure -10%.


Similar to the brightness gradients but the following saturation gradients show a change of the HunterLab color 55.4745, 7.6064, 16.9810 by changing the saturation by 10% instead.


 55.4745, 7.6064,
16.9810


 55.4745, 7.6064,
16.9810


174.7866, 5.8624,
31.7803


 45.1974, 7.5071,
15.1986


 78.0299, 7.5864,
20.4042

 35.6463, 7.3267,
13.3423


 90.2324, 7.4856,
22.0679

 26.8827, 7.0494,
11.3821


 103.0121, 7.3304,
23.7110

 18.9851, 6.6560,
9.2694

116.3438, 7.1249,
25.3393

 12.0615, 6.1185,
8.1907

130.2057, 6.8726,
26.9571

 5.0655, 10.2142,
3.5459

144.5782, 6.5765,

0.0000, NaN, NaN

28.5681

0.0000, NaN, NaN

159.4438, 6.2390,
30.1751

0.0000, NaN, NaN

■ 55.4745, 7.6064,
16.9810

■ 55.4745, 7.6064,
16.9810

■ 52.1791, 11.3023,
19.6103

■ 58.9442, 4.2103,
13.9278

■ 49.0733, 15.3104,
21.7527

■ 62.5669, 1.1055,
10.5036

■ 46.1800, 19.6183,
23.3460

■ 66.3287, -1.7304,
6.7573

■ 43.5217, 24.1923,
24.3332

■ 70.2163, -4.3197,
2.7302

■ 41.1211, 28.9645,
24.6768

■ 74.2182, -6.6849,
-1.5428

■ 38.9962, 33.8122,
24.4203

■ 78.3243, -8.8475,
-6.0324

■ 38.5052, 34.9974,
24.3394

■ 82.5259, -10.8278,
-10.7139

■ 86.5428, -14.1651,
-11.7360

■ 90.2159, -19.7595,
-6.9317

Harmonies

Analogous

The Analogous color harmony consists of three colors that are next to each other on the color wheel.



55.4758, 15.5353, 11.5206



55.4745, 7.6064, 16.9810



55.4758, -2.7087, 18.8422

Triad

The Triadic color harmony groups three colors that are evenly spaced from another and form a triangle on the color wheel.



55.4758, 7.6042, 16.9818



55.4758, -21.5360, 3.2609



55.4758, 7.1324, -16.2179

Complementary

The Complementary color scheme is a pair of colors which are on the opposite of each other on the color wheel.



55.4745, 7.6064, 16.9810



55.8734, -9.0338, -13.8495

Split Complementary

Split-complementary colors differ from the complementary color scheme. The scheme consists of three colors, the original color and two neighbors of the complement color.



55.4758, -3.2169, -19.5067



55.4745, 7.6064, 16.9810



55.4758, -19.3159, -7.0840

Square

The Square scheme is like the rectangle color scheme, but the four colors are evenly spaced on the color wheel.



55.4758, 7.6042, 16.9818



55.4758, -19.0920, 11.8686



55.4758, -12.7940, -15.8966



55.4758, 15.2491, -7.5799

Rectangle

The Rectangle color scheme consists of four colors that form a rectangle on the color wheel.



55.4745, 7.6064, 16.9810



55.4758, -9.3949, 18.1137



55.4758, -12.7940, -15.8966



55.4758, 3.7759, -18.0490

Sweetspot

The Sweet Spot groups the original color and five complimentary colors.



55.4758, 7.6042, 16.9818



87.4176, -0.9632, 11.0033



49.9052, 27.2337, -6.9621



40.2723, -0.2109, 5.4247



96.5975, -5.1542, 5.2483



43.2801, -2.3093, 2.3515

Same Dimension

The Same Dimension uses a secret algorithm to generate beautiful new colors.



55.4758, 7.6042, 16.9818



71.0109, 14.3178, 25.8300



65.1608, -8.9015, 25.2373



30.9407, -0.5793, 3.5206



32.1674, 28.5279, 20.3208



6.9743, 3.1428, 4.3526

Inverse Universe

The Inverse Universe completely reimagines the original color for something new.



55.8734, -9.0338, -13.8495



71.6374, -12.6145, -24.1141



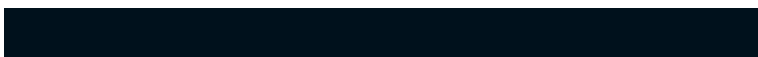
46.1349, 7.5236, -29.7182



30.9911, -2.6065, -0.2323



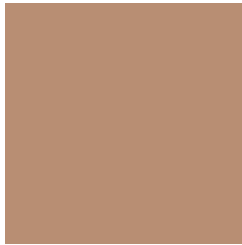
32.4204, -1.5369, -37.2049



6.9801, -1.6852, -5.0867

Previews

White Background



This preview shows how the HunterLab color 55.4745, 7.6064, 16.9810 looks on a white background.

Color Contrast Check

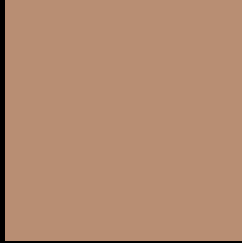
Large Text (above 18pt) WCAG AA × Fail

Any Text WCAG AA × Fail

Large Text (above 18pt) WCAG AAA × Fail

Any Text WCAG AAA × Fail

Black Background



This preview shows how the HunterLab color 55.4745, 7.6064, 16.9810 looks on a black background.

Color Contrast Check

Large Text (above 18pt) WCAG AA ✓ Pass

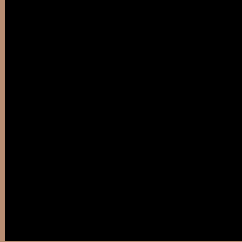
Any Text WCAG AA ✓ Pass

Large Text (above 18pt) WCAG AAA ✓ Pass

Any Text WCAG AAA ✓ Pass

If you want to check with other color combinations, try the [Color Contrast Checker](#).

HunterLab 55.4745, 7.6064, 16.9810 Background



This preview shows how black text looks on a background with the HunterLab color 55.4745, 7.6064, 16.9810.



This preview shows how white text looks on a background with the HunterLab color 55.4745, 7.6064,

Color Blindness Simulation

Color vision deficiency is a very complex topic, and I could not describe the different causes any better than Wikipedia does, so if you want to learn more, you should check out their [article about color blindness](#).

Dichromacy



Original Color

55.4745, 7.6064, 16.9810

Protanopia

55.7155, -4.2905, 15.6841

Deuteranopia

55.6154, 3.8468, 17.3658



Tritanopia

55.3121, 15.4584, 4.3218

Trichromacy



Original Color

55.4745, 7.6064, 16.9810

Protanomaly

55.6083, -0.3030, 15.9860

Deuteranomaly

55.5560, 5.0552, 17.3323

Tritanomaly

55.3913, 12.3937, 9.4168

Monochromacy



Original Color

55.4745, 7.6064, 16.9810

Achromatopsia

55.6299, -2.9683, 3.0225

Achromatomaly

55.4989, 0.2709, 8.5157

CSS Examples

Text

The CSS property to change the color of the text to HunterLab 55.4745, 7.6064, 16.9810 is called "color". The color property can be set on classes, ids or directly on the HTML element.

This example shows how text in the color `rgb(184, 142, 115)` looks like.

```
.text, #text, p{  
    color:rgb(184, 142, 115)  
}
```

If you want to add a text shadow in that color use the text-shadow property, you can generate a text shadow directly with our [CSS Text Shadow Generator](#).

Here you see how black text with a 4 pixel rgb(184, 142, 115) colored shadow looks like.

```
.shadow{ text-shadow: 4px 4px 2px rgb(184, 142, 115) }
```

Border

The CSS property to change the border of an element to HunterLab 55.4745, 7.6064, 16.9810 is called "border". The border property can be set on classes, ids or directly on the HTML element.

This example shows the color as border, it can be applied via the CSS property "border" or "border-color".

```
.border, #border, table{ border:4px solid rgb(184, 142, 115) }
```


If only the border color should be changed use the property `border-color`.

```
.border{ border-color:rgb(184, 142, 115) }
```

If you want to add a box shadow in that color use:

Here you see how a box with a 4 pixel `rgb(184, 142, 115)` colored shadow looks like.

```
.boxshadow{ -moz-box-shadow:4px 4px 4px  
4px rgb(184, 142, 115); -webkit-box-  
shadow:4px 4px 4px 4px rgb(184, 142, 115);  
box-shadow:4px 4px 4px 4px rgb(184, 142,  
115) }
```

Background

The CSS property to change the background color of an element to HunterLab 55.4745, 7.6064, 16.9810 is called "background". The background property can be set on classes, ids or directly on the HTML element.

```
.background, #background, body{  
background: rgb(184, 142, 115) }
```

If only the background color should be changed can be used:

```
.background{ background-color: rgb(184,  
142, 115) }
```

This example shows the color as background, it is applied via the CSS property "background".

To optimize and compress your CSS code, you can use our [online CSS compressor and optimizer](#) based on csstidy. If you want to create a linear or radial gradient as background or border, check our [CSS Gradient Generator](#).

Hey! You found this booklet interesting? Support Converting Colors with the new Membership Option!

The pro membership hides all ads, plus gives you double the colors in the color bucket, and more awesome pro features!

[Learn more, Memberships starting at \\$2.50/m!](#)

**Follow me
on Twitter!**

@ConvertingColor