

Converting Colors

HunterLab(55.3631, 6.8402,
21.6833)

Have a look what the booklet for
HunterLab(55.3631, 6.8402,
21.6833) contains.

HunterLab(55.3949, 6.7364, 21.6176)	3
<i>Conversions</i>	4
<i>Details</i>	6
<i>Harmonies</i>	12
<i>Previews</i>	24
<i>Color Blindness Simulation</i>	28
<i>CSS Examples</i>	31

Color

**HunterLab(55.3949, 6.7364,
21.6176)**

Conversions

Conversions Part 1

Format	Color
Hex	BA8E63
RGB	186, 142, 99
RGB Percent	73%, 56%, 39%
CMY	0.2706, 0.4431, 0.6118
CMYK	0.00, 0.24, 0.47, 0.27
HSL	30°, 39%, 56%
HSV	30°, 47%, 73%
XYZ	32.1748, 30.6859, 16.0316
YIQ	150.2540, 40.0270, -4.0450

Conversions

Conversions Part 2

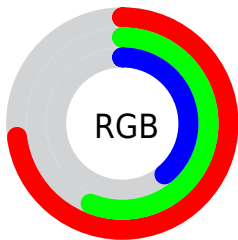
Format	Color
RYB	186, 184, 99
Decimal	12226147
CIELab	62.24, 11.22, 29.29
CIELCh	62, 31.365, 69.046
Yxy	30.6874, 0.4078, 0.3890
Android (android.graphics.Color)	4290416227 (0xFFBA8E63)
YUV	150.2540, -25.2682, 31.3492
Hunter-Lab	55.3949, 6.7364, 21.6176

Details

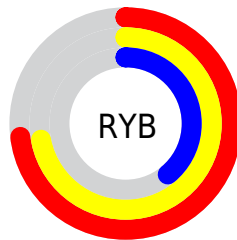
The HunterLab color $55.3949, 6.7364, 21.6176$ is a dark color, and the websafe version is hex $CC9966$. A complement of this color would be $50.8347, -5.2826, -22.9493$, and the grayscale version is $55.4168, -2.9569, 3.0109$.

A 20% lighter version of the original color is $78.0480, 6.4784, 26.2869$, and $35.6632, 6.5845, 16.8838$ is the 20% darker color. If you saturate the color by 10%, you get $52.6210, 9.8322, 23.9578$, and if you desaturate by 10%, it is $58.3124, 3.9557, 18.7002$.

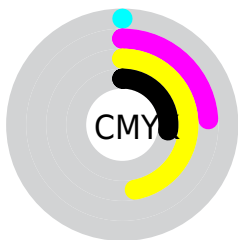
Distribution



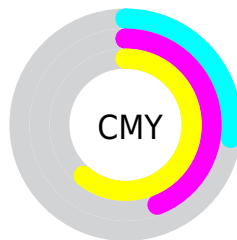
- Red (73%)
- Green (56%)
- Blue (39%)



- Red (73%)
- Yellow (72%)
- Blue (39%)



- Cyan (0%)
- Magenta (24%)
- Yellow (47%)
- Black (27%)



- Cyan (27%)
- Magenta (44%)
- Yellow (61%)

Brightness & Saturation Gradients

These gradients show how the HunterLab color 55.3949, 6.7364, 21.6176 changes by changing the brightness by 10 percent. The first figure shows a shift by +10% for each color and the second figure -10%.


Similar to the brightness gradients but the following saturation gradients show a change of the HunterLab color 55.3949, 6.7364, 21.6176 by changing the saturation by 10% instead.

 55.3949, 6.7364,
21.6176

 55.3949, 6.7364,
21.6176

174.6699, 4.6354,
40.3336

 45.1231, 6.6858,
19.2450


 77.9408, 6.6257,
26.0917


 35.5776, 6.5573,
16.7424


 90.1388, 6.4825,
28.2303

 26.8202, 6.3352,
14.0663


 102.9142, 6.2867,
30.3213

 18.9295, 6.0012,
11.2669

 116.2419, 6.0421,
32.3742

 12.0137, 5.5274,
8.4096

130.1000, 5.7521,
34.3965

 4.9830, 9.5426,
3.4881

144.4687, 5.4194,

0.0000, NaN, NaN

36.3940

0.0000, NaN, NaN

159.3306, 5.0465,
38.3717

0.0000, NaN, NaN

■ 55.3949, 6.7364,
21.6176

■ 55.3949, 6.7364,
21.6176

■ 52.6210, 9.8322,
23.9578

■ 58.3124, 3.9557,
18.7002

■ 49.9986, 13.2531,
25.6703

■ 61.3581, 1.4861,
15.2545

■ 47.5412, 16.9869,
26.7175

■ 64.5229, -0.6911,
11.3315

■ 45.2605, 21.0056,
27.0815

■ 67.7972, -2.5948,
6.9782

■ 43.1650, 25.2487,
26.8034

■ 71.1723, -4.2448,
2.2377

■ 42.5241, 26.6262,
26.6693

■ 74.6406, -5.6612,
-2.8516

■ 78.1949, -6.8629,
-8.2555

■ 81.8291, -7.8683,
-13.9438

■ 85.0944, -11.1499,
-13.6789

Harmonies

Analogous

The Analogous color harmony consists of three colors that are next to each other on the color wheel.



55.3962, 18.9127, 16.5399



55.3949, 6.7364, 21.6176



55.3962, -7.0217, 22.4261

Triad

The Triadic color harmony groups three colors that are evenly spaced from another and form a triangle on the color wheel.



55.3962, 6.7340, 21.6183



55.3962, -26.5492, -1.0518



55.3962, 14.5464, -20.0662

Complementary

The Complementary color scheme is a pair of colors which are on the opposite of each other on the color wheel.



55.3949, 6.7364, 21.6176



50.8347, -5.2826, -22.9493

Split Complementary

Split-complementary colors differ from the complementary color scheme. The scheme consists of three colors, the original color and two neighbors of the complement color.



55.3962, 1.2247, -27.7080



55.3949, 6.7364, 21.6176



55.3962, -21.8884, -15.1121

Square

The Square scheme is like the rectangle color scheme, but the four colors are evenly spaced on the color wheel.



55.3962, 6.7340, 21.6183



55.3962, -25.3816, 11.2147



55.3962, -12.0278, -25.7035



55.3962, 23.7177, -6.6674

Rectangle

The Rectangle color scheme consists of four colors that form a rectangle on the color wheel.



55.3949, 6.7364, 21.6176



55.3962, -15.1238, 20.6903



55.3962, -12.0278, -25.7035



55.3962, 10.3560, -23.5246

Sweetspot

The Sweet Spot groups the original color and five complimentary colors.



55.3962, 6.7340, 21.6183



87.9751, -1.6157, 13.8187



46.2332, 33.9210, -4.7292



40.8404, -0.4843, 7.0618



97.7295, -5.2146, 5.3098



44.2712, -2.3622, 2.4053

Same Dimension

The Same Dimension uses a secret algorithm to generate beautiful new colors.



55.3962, 6.7340, 21.6183



70.7887, 13.3046, 32.2966



67.7125, -13.6922, 31.1480



31.1860, -0.9937, 3.7866



35.0932, 21.3409, 21.9979



7.4702, 2.1120, 4.6401

Inverse Universe

The Inverse Universe completely reimagines the original color for something new.



50.8347, -5.2826, -22.9493



63.4518, -5.6982, -39.6796



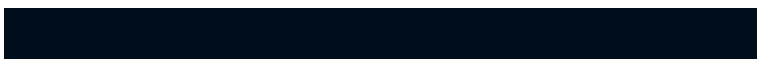
39.2417, 15.9756, -45.7272



30.7407, -2.1965, -0.5365



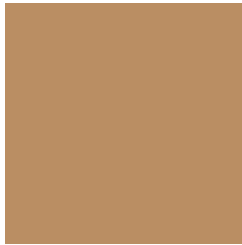
28.1572, 6.0952, -48.3518



6.3494, -0.7172, -6.3881

Previews

White Background



This preview shows how the HunterLab color 55.3949, 6.7364, 21.6176 looks on a white background.

Color Contrast Check

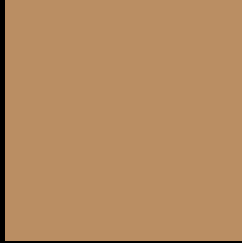
Large Text (above 18pt) WCAG AA × Fail

Any Text WCAG AA × Fail

Large Text (above 18pt) WCAG AAA × Fail

Any Text WCAG AAA × Fail

Black Background



This preview shows how the HunterLab color 55.3949, 6.7364, 21.6176 looks on a black background.

Color Contrast Check

Large Text (above 18pt) WCAG AA ✓ Pass

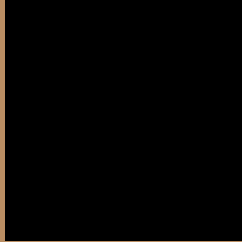
Any Text WCAG AA ✓ Pass

Large Text (above 18pt) WCAG AAA ✓ Pass

Any Text WCAG AAA ✓ Pass

If you want to check with other color combinations, try the [Color Contrast Checker](#).

HunterLab 55.3949, 6.7364, 21.6176 Background



This preview shows how black text looks on a background with the HunterLab color 55.3949, 6.7364, 21.6176.



This preview shows how white text looks on a background with the HunterLab color 55.3949, 6.7364,

21.6176.

Color Blindness Simulation

Color vision deficiency is a very complex topic, and I could not describe the different causes any better than Wikipedia does, so if you want to learn more, you should check out their [article about color blindness](#).

Dichromacy



Original Color

55.3949, 6.7364, 21.6176

Protanopia

55.5869, -5.3759, 20.4715

Deuteranopia

55.3815, 3.9055, 21.5567



Tritanopia

55.3451, 16.7630, 5.2644

Trichromacy



Original Color

55.3949, 6.7364, 21.6176

Protanomaly

55.4951, -1.3201, 20.7427

Deuteranomaly

55.3291, 5.1303, 21.5339

Tritanomaly

55.2999, 13.0924, 12.0373

Monochromacy



Original Color

55.3949, 6.7364, 21.6176

Achromatopsia

55.2257, -2.9467, 3.0005

Achromatomaly

55.0388, -0.2075, 10.7797

CSS Examples

Text

The CSS property to change the color of the text to HunterLab 55.3949, 6.7364, 21.6176 is called "color". The color property can be set on classes, ids or directly on the HTML element.

This example shows how text in the color `rgb(186, 142, 99)` looks like.

```
.text, #text, p{  
    color:rgb(186, 142, 99)  
}
```

If you want to add a text shadow in that color use the text-shadow property, you can generate a text shadow directly with our [CSS Text Shadow Generator](#).

Here you see how black text with a 4 pixel rgb(186, 142, 99) colored shadow looks like.

```
.shadow{ text-shadow: 4px 4px 2px rgb(186, 142, 99) }
```

Border

The CSS property to change the border of an element to HunterLab 55.3949, 6.7364, 21.6176 is called "border". The border property can be set on classes, ids or directly on the HTML element.

This example shows the color as border, it can be applied via the CSS property "border" or "border-color".

```
.border, #border, table{ border:4px solid rgb(186, 142, 99) }
```


If only the border color should be changed use the property `border-color`.

```
.border{ border-color:rgb(186, 142, 99) }
```

If you want to add a box shadow in that color use:

Here you see how a box with a 4 pixel `rgb(186, 142, 99)` colored shadow looks like.

```
.boxshadow{ -moz-box-shadow:4px 4px 4px  
4px rgb(186, 142, 99); -webkit-box-  
shadow:4px 4px 4px 4px rgb(186, 142, 99);  
box-shadow:4px 4px 4px 4px rgb(186, 142,  
99) }
```

Background

The CSS property to change the background color of an element to HunterLab 55.3949, 6.7364, 21.6176 is called "background". The background property can be set on classes, ids or directly on the HTML element.

```
.background, #background, body{  
background: rgb(186, 142, 99) }
```

If only the background color should be changed can be used:

```
.background{ background-color: rgb(186,  
142, 99) }
```

This example shows the color as background, it is applied via the CSS property "background".

To optimize and compress your CSS code, you can use our [online CSS compressor and optimizer](#) based on csstidy. If you want to create a linear or radial gradient as background or border, check our [CSS Gradient Generator](#).

Hey! You found this booklet interesting? Support Converting Colors with the new Membership Option!

The pro membership hides all ads, plus gives you double the colors in the color bucket, and more awesome pro features!

[Learn more, Memberships starting at \\$2.50/m!](#)

**Follow me
on Twitter!**

@ConvertingColor