

Converting Colors

HunterLab(55.4547, 12.9593,
17.0564)

Have a look what the booklet for
HunterLab(55.4547, 12.9593,
17.0564) contains.

HunterLab(55.4547, 12.9593, 17.0564)	3
<i>Conversions</i>	4
<i>Details</i>	6
<i>Harmonies</i>	12
<i>Previews</i>	24
<i>Color Blindness Simulation</i>	28
<i>CSS Examples</i>	31

Color

**HunterLab(55.4547, 12.9593,
17.0564)**

Conversions

Conversions Part 1

Format	Color
Hex	C18A73
RGB	193, 138, 115
RGB Percent	76%, 54%, 45%
CMY	0.2431, 0.4588, 0.5490
CMYK	0.00, 0.28, 0.40, 0.24
HSL	18°, 39%, 60%
HSV	18°, 40%, 76%
XYZ	34.1753, 30.7522, 20.3542
YIQ	151.8230, 40.1630, 4.5070

Conversions

Conversions Part 2

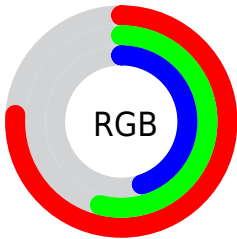
Format	Color
R _Y B	193, 148, 115
Decimal	12683891
CIE Lab	62.30, 18.05, 20.64
CIE LCh	62, 27.421, 48.829
Yxy	30.7537, 0.4007, 0.3606
Android (android.graphics.Color)	4290873971 (0xFFC18A73)
YUV	151.8230, -18.1537, 36.1122
Hunter-Lab	55.4547, 12.9593, 17.0564

Details

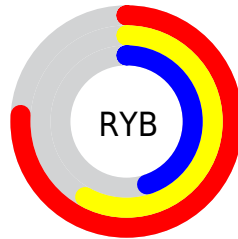
The HunterLab color **55.4547, 12.9593, 17.0564** is a light color, and the websafe version is hex **CC9999**. A complement of this color would be **60.2023, -13.2313, -12.8228**, and the grayscale version is **56.0238, -2.9893, 3.0439**.

A 20% lighter version of the original color is **78.1016, 13.2692, 20.6046**, and **35.6414, 11.8464, 13.3358** is the 20% darker color. If you saturate the color by 10%, you get **51.6639, 17.8944, 19.5311**, and if you desaturate by 10%, it is **59.4964, 8.3342, 14.2214**.

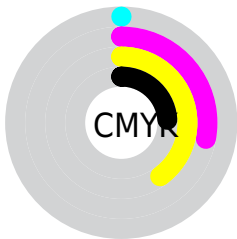
Distribution



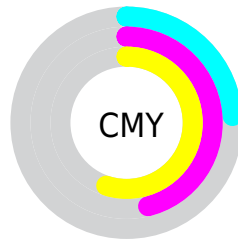
- Red (76%)
- Green (54%)
- Blue (45%)



- Red (76%)
- Yellow (58%)
- Blue (45%)



- Cyan (0%)
- Magenta (28%)
- Yellow (40%)
- Black (24%)



- Cyan (24%)
- Magenta (46%)
- Yellow (55%)

Brightness & Saturation Gradients

These gradients show how the HunterLab color 55.4547, 12.9593, 17.0564 changes by changing the brightness by 10 percent. The first figure shows a shift by +10% for each color and the second figure -10%.

Similar to the brightness gradients but the following saturation gradients show a change of the HunterLab color 55.4547, 12.9593, 17.0564 by changing the saturation by 10% instead.

■ 55.4547, 12.9593,
17.0564

■ 55.4547, 12.9593,
17.0564

174.7576, 13.3549,
31.9159

■ 45.1790, 12.5691,
15.2649

■ 78.0078, 13.4799,
20.4958

■ 35.6292, 12.0821,
13.3986

■ 90.2092, 13.6323,
22.1669

■ 26.8672, 11.4800,
11.4271

■ 102.9878, 13.7207,
23.8169

■ 18.9713, 10.7419,
9.3016

116.3185, 13.7501,
25.4516

■ 12.0496, 9.8419,
8.2405

130.1794, 13.7248,
27.0757

■ 5.0451, 15.3216,
3.5316

144.5510, 13.6485,

0.0000, NaN, NaN

28.6926

0.0000, NaN, NaN

159.4157, 13.5243,
30.3053

0.0000, NaN, NaN

■ 55.4547, 12.9593,
17.0564

■ 55.4547, 12.9593,
17.0564

■ 51.6639, 17.8944,
19.5311

■ 59.4964, 8.3342,
14.2214

■ 48.1537, 23.1277,
21.5679

■ 63.7552, 4.0221,
11.0871

■ 44.9631, 28.6010,
23.0850

■ 68.2073, 0.0032,
7.7063

■ 42.1317, 34.2055,
24.0032

■ 72.8310, -3.7467,
4.1200

■ 39.6974, 39.7665,
24.2703

■ 77.6079, -7.2536,
0.3608

■ 37.7570, 44.7948,
24.0499

■ 82.5227, -10.5438,
-3.5460

■ 87.5622, -13.6415,
-7.5801

■ 92.1946, -19.4948,
-4.3733

■ 94.9091, -23.5261,
-1.0310

Harmonies

Analogous

The Analogous color harmony consists of three colors that are next to each other on the color wheel.



55.4560, 20.4556, 9.6079



55.4547, 12.9593, 17.0564



55.4560, 1.5514, 20.4391

Triad

The Triadic color harmony groups three colors that are evenly spaced from another and form a triangle on the color wheel.



55.4560, 12.9568, 17.0572



55.4560, -23.7146, 7.0810



55.4560, 4.6352, -21.8533

Complementary

The Complementary color scheme is a pair of colors which are on the opposite of each other on the color wheel.



55.4547, 12.9593, 17.0564



60.2023, -13.2313, -12.8228

Split Complementary

Split-complementary colors differ from the complementary color scheme. The scheme consists of three colors, the original color and two neighbors of the complement color.



55.4560, -7.3354, -22.9314



55.4547, 12.9593, 17.0564



55.4560, -23.0412, -4.4937

Square

The Square scheme is like the rectangle color scheme, but the four colors are evenly spaced on the color wheel.



55.4560, 12.9568, 17.0572



55.4560, -19.1903, 15.5452



55.4560, -17.2658, -16.0415



55.4560, 15.3779, -13.3486

Rectangle

The Rectangle color scheme consists of four colors that form a rectangle on the color wheel.



55.4547, 12.9593, 17.0564



55.4560, -6.4380, 20.5382



55.4560, -17.2658, -16.0415



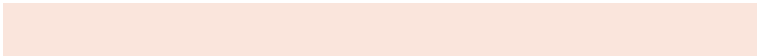
55.4560, 0.6019, -23.1544

Sweetspot

The Sweet Spot groups the original color and five complimentary colors.



55.4560, 12.9568, 17.0572



90.2064, 0.9312, 11.1374



51.5128, 32.7423, -11.9725



41.4152, 0.7527, 5.4386



98.8636, -5.2751, 5.3714



45.2661, -2.4153, 2.4594

Same Dimension

The Same Dimension uses a secret algorithm to generate beautiful new colors.



55.4560, 12.9568, 17.0572



69.9597, 22.8211, 25.6257



66.0797, -5.8813, 26.0617



32.4827, -0.1893, 3.4719



30.9908, 35.9599, 19.7259



7.3352, 5.1256, 4.6096

Inverse Universe

The Inverse Universe completely reimagines the original color for something new.



60.2023, -13.2313, -12.8228



77.4570, -18.9032, -21.7693



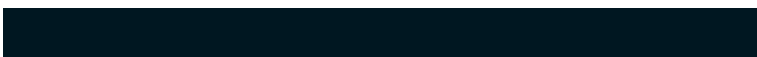
48.9600, 5.2246, -30.8365



33.0310, -3.1719, 0.0420



37.9887, -8.5095, -29.1132



8.5928, -2.7713, -4.7578

Previews

White Background



This preview shows how the HunterLab color 55.4547, 12.9593, 17.0564 looks on a white background.

Color Contrast Check

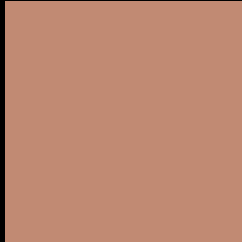
Large Text (above 18pt) WCAG AA × Fail

Any Text WCAG AA × Fail

Large Text (above 18pt) WCAG AAA × Fail

Any Text WCAG AAA × Fail

Black Background



This preview shows how the HunterLab color 55.4547, 12.9593, 17.0564 looks on a black background.

Color Contrast Check

Large Text (above 18pt) WCAG AA ✓ Pass

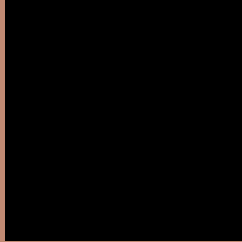
Any Text WCAG AA ✓ Pass

Large Text (above 18pt) WCAG AAA ✓ Pass

Any Text WCAG AAA ✓ Pass

If you want to check with other color combinations, try the [Color Contrast Checker](#).

HunterLab 55.4547, 12.9593, 17.0564 Background



This preview shows how black text looks on a background with the HunterLab color 55.4547, 12.9593, 17.0564.



This preview shows how white text looks on a background with the HunterLab color 55.4547, 12.9593,

Color Blindness Simulation

Color vision deficiency is a very complex topic, and I could not describe the different causes any better than Wikipedia does, so if you want to learn more, you should check out their [article about color blindness](#).

Dichromacy



Original Color

55.4547, 12.9593, 17.0564

Protanopia

55.6662, -4.3760, 14.9579

Deuteranopia

55.6154, 3.8468, 17.3658



Tritanopia

55.4974, 19.7113, 6.3536

Trichromacy



Original Color

55.4547, 12.9593, 17.0564

Protanomaly

55.3718, 1.8142, 15.4638

Deuteranomaly

55.3427, 7.1315, 17.1717

Tritanomaly

55.3385, 17.3545, 10.6283

Monochromacy



Original Color

55.4547, 12.9593, 17.0564

Achromatopsia

56.0347, -2.9899, 3.0445

Achromatomaly

55.6300, 2.2142, 8.2846

CSS Examples

Text

The CSS property to change the color of the text to HunterLab 55.4547, 12.9593, 17.0564 is called "color". The color property can be set on classes, ids or directly on the HTML element.

This example shows how text in the color `rgb(193, 138, 115)` looks like.

```
.text, #text, p{  
    color:rgb(193, 138, 115)  
}
```

If you want to add a text shadow in that color use the text-shadow property, you can generate a text shadow directly with our [CSS Text Shadow Generator](#).

Here you see how black text with a 4 pixel rgb(193, 138, 115) colored shadow looks like.

```
.shadow{ text-shadow: 4px 4px 2px rgb(193, 138, 115) }
```

Border

The CSS property to change the border of an element to HunterLab 55.4547, 12.9593, 17.0564 is called "border". The border property can be set on classes, ids or directly on the HTML element.

This example shows the color as border, it can be applied via the CSS property "border" or "border-color".

```
.border, #border, table{ border:4px solid rgb(193, 138, 115) }
```


If only the border color should be changed use the property `border-color`.

```
.border{ border-color:rgb(193, 138, 115) }
```

If you want to add a box shadow in that color use:

Here you see how a box with a 4 pixel `rgb(193, 138, 115)` colored shadow looks like.

```
.boxshadow{ -moz-box-shadow:4px 4px 4px 4px rgb(193, 138, 115); -webkit-box-shadow:4px 4px 4px 4px rgb(193, 138, 115); box-shadow:4px 4px 4px 4px rgb(193, 138, 115) }
```

Background

The CSS property to change the background color of an element to HunterLab 55.4547, 12.9593, 17.0564 is called "background". The background property can be set on classes, ids or directly on the HTML element.

```
.background, #background, body{  
background: rgb(193, 138, 115) }
```

If only the background color should be changed can be used:

```
.background{ background-color: rgb(193,  
138, 115) }
```

This example shows the color as background, it is applied via the CSS property "background".

To optimize and compress your CSS code, you can use our [online CSS compressor and optimizer](#) based on csstidy. If you want to create a linear or radial gradient as background or border, check our [CSS Gradient Generator](#).

Hey! You found this booklet interesting? Support Converting Colors with the new Membership Option!

The pro membership hides all ads, plus gives you double the colors in the color bucket, and more awesome pro features!

[Learn more, Memberships starting at \\$2.50/m!](#)

**Follow me
on Twitter!**

@ConvertingColor