

Converting Colors

HunterLab(55.4659, 12.3751,
21.4312)

Have a look what the booklet for
HunterLab(55.4659, 12.3751,
21.4312) contains.

HunterLab(55.4068, 12.2331, 21.4540)	3
<i>Conversions</i>	4
<i>Details</i>	6
<i>Harmonies</i>	12
<i>Previews</i>	24
<i>Color Blindness Simulation</i>	28
<i>CSS Examples</i>	31

Color

**HunterLab(55.4068, 12.2331,
21.4540)**

Conversions

Conversions Part 1

Format	Color
Hex	C38A64
RGB	195, 138, 100
RGB Percent	76%, 54%, 39%
CMY	0.2353, 0.4588, 0.6078
CMYK	0.00, 0.29, 0.49, 0.24
HSL	24°, 44%, 58%
HSV	24°, 49%, 76%
XYZ	33.8944, 30.6991, 16.1957
YIQ	150.7110, 46.1700, 0.2660

Conversions

Conversions Part 2

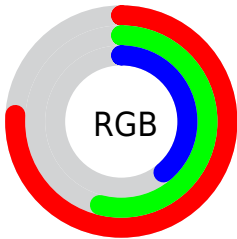
Format	Color
RYB	195, 163, 100
Decimal	12814948
CIELab	62.25, 17.27, 28.95
CIElCh	62, 33.710, 59.185
Yxy	30.7006, 0.4195, 0.3800
Android (android.graphics.Color)	4291005028 (0xFFC38A64)
YUV	150.7110, -25.0005, 38.8415
Hunter-Lab	55.4068, 12.2331, 21.4540

Details

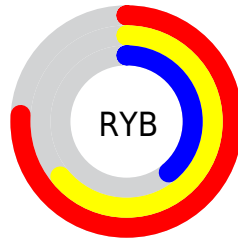
The HunterLab color **55.4068, 12.2331, 21.4540** is a dark color, and the websafe version is hex **CC9966**. A complement of this color would be **55.4635, -9.6442, -21.1840**, and the grayscale version is **55.5988, -2.9666, 3.0208**.

A 20% lighter version of the original color is **78.1054, 12.5702, 26.1231**, and **35.6600, 11.4629, 16.7726** is the 20% darker color. If you saturate the color by 10%, you get **52.1429, 16.4883, 23.6783**, and if you desaturate by 10%, it is **58.8765, 8.3070, 18.6902**.

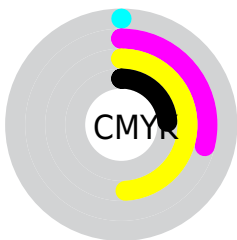
Distribution



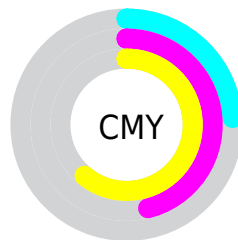
- Red (76%)
- Green (54%)
- Blue (39%)



- Red (76%)
- Yellow (64%)
- Blue (39%)



- Cyan (0%)
- Magenta (29%)
- Yellow (49%)
- Black (24%)



- Cyan (24%)
- Magenta (46%)
- Yellow (61%)

Brightness & Saturation Gradients

These gradients show how the HunterLab color 55.4068, 12.2331, 21.4540 changes by changing the brightness by 10 percent. The first figure shows a shift by +10% for each color and the second figure -10%.

Similar to the brightness gradients but the following saturation gradients show a change of the HunterLab color 55.4068, 12.2331, 21.4540 by changing the saturation by 10% instead.

■ 55.4068, 12.2331,
21.4540

■ 55.4068, 12.2331,
21.4540

174.6874, 12.3488,
40.0151

■ 45.1342, 11.8804,
19.1048

■ 77.9541, 12.6833,
25.8865

■ 35.5879, 11.4328,
16.6278

■ 90.1529, 12.8027,
28.0063

■ 26.8296, 10.8720,
13.9797

■ 102.9289, 12.8592,
30.0796

■ 18.9378, 10.1774,
11.1950

■ 116.2572, 12.8578,
32.1157

■ 12.0209, 9.3218,
8.4146

130.1158, 12.8028,
34.1219

■ 4.9954, 14.7965,
3.4968

144.4851, 12.6976,

0.0000, NaN, NaN

36.1042

0.0000, NaN, NaN

159.3476, 12.5454,
38.0673

0.0000, NaN, NaN

■ 55.4068, 12.2331,
21.4540

■ 55.4068, 12.2331,
21.4540

■ 52.1429, 16.4883,
23.6783

■ 58.8765, 8.3070,
18.6902

■ 49.1030, 21.0685,
25.2948

■ 62.5277, 4.7127,
15.4500

■ 46.3119, 25.9333,
26.2463

■ 66.3433, 1.4320,
11.7943

■ 43.7926, 31.0083,
26.4999

■ 70.3074, -1.5565,
7.7761

■ 41.5612, 36.1522,
26.1403

■ 74.4058, -4.2764,
3.4413

■ 41.2942, 36.7979,
26.0895

■ 78.6263, -6.7519,
-1.1713

■ 82.9581, -9.0063,
-6.0286

■ 87.3550, -11.2666,
-10.5821

■ 91.1597, -17.1852,
-5.6613

Harmonies

Analogous

The Analogous color harmony consists of three colors that are next to each other on the color wheel.



55.4082, 23.8567, 14.5619



55.4068, 12.2331, 21.4540



55.4082, -2.5579, 23.6849

Triad

The Triadic color harmony groups three colors that are evenly spaced from another and form a triangle on the color wheel.



55.4082, 12.2305, 21.4547



55.4082, -28.4188, 3.3960



55.4082, 11.4650, -25.8688

Complementary

The Complementary color scheme is a pair of colors which are on the opposite of each other on the color wheel.



55.4068, 12.2331, 21.4540



55.4635, -9.6442, -21.1840

Split Complementary

Split-complementary colors differ from the complementary color scheme. The scheme consists of three colors, the original color and two neighbors of the complement color.



55.4082, -3.3597, -31.0478



55.4068, 12.2331, 21.4540



55.4082, -25.4815, -11.7156

Square

The Square scheme is like the rectangle color scheme, but the four colors are evenly spaced on the color wheel.



55.4082, 12.2305, 21.4547



55.4082, -25.1470, 15.0677



55.4082, -16.6710, -25.3046



55.4082, 23.3834, -12.5515

Rectangle

The Rectangle color scheme consists of four colors that form a rectangle on the color wheel.



55.4068, 12.2331, 21.4540



55.4082, -11.9206, 22.8329



55.4082, -16.6710, -25.3046



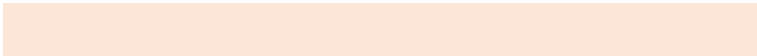
55.4082, 6.6101, -28.7517

Sweetspot

The Sweet Spot groups the original color and five complimentary colors.



55.4082, 12.2305, 21.4547



90.6138, 0.4800, 13.9621



48.1155, 38.7739, -8.9793



41.8751, 0.6368, 7.0630

0.0000, NaN, NaN



46.2646, -2.4686, 2.5136

Same Dimension

The Same Dimension uses a secret algorithm to generate beautiful new colors.



55.4082, 12.2305, 21.4547



69.7055, 22.1741, 31.7355



68.8692, -10.9895, 31.8646



32.7482, -0.6412, 3.7617



33.5228, 29.0654, 21.1655



7.8765, 3.8769, 4.9213

Inverse Universe

The Inverse Universe completely reimagines the original color for something new.



55.4635, -9.6442, -21.1840



69.7500, -12.3948, -35.8401



42.0643, 13.9235, -46.6088



32.7573, -2.7271, -0.2882



33.1611, -0.8661, -39.5787



7.7912, -1.6110, -6.2607

Previews

White Background



This preview shows how the HunterLab color 55.4068, 12.2331, 21.4540 looks on a white background.

Color Contrast Check

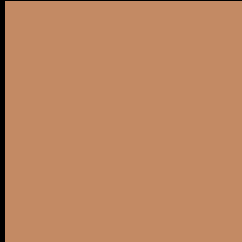
Large Text (above 18pt) WCAG AA × Fail

Any Text WCAG AA × Fail

Large Text (above 18pt) WCAG AAA × Fail

Any Text WCAG AAA × Fail

Black Background



This preview shows how the HunterLab color 55.4068, 12.2331, 21.4540 looks on a black background.

Color Contrast Check

Large Text (above 18pt) WCAG AA ✓ Pass

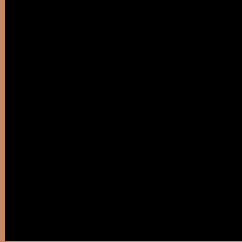
Any Text WCAG AA ✓ Pass

Large Text (above 18pt) WCAG AAA ✓ Pass

Any Text WCAG AAA ✓ Pass

If you want to check with other color combinations, try the [Color Contrast Checker](#).

HunterLab 55.4068, 12.2331, 21.4540 Background



This preview shows how black text looks on a background with the HunterLab color 55.4068, 12.2331, 21.4540.



This preview shows how white text looks on a background with the HunterLab color 55.4068, 12.2331,

Color Blindness Simulation

Color vision deficiency is a very complex topic, and I could not describe the different causes any better than Wikipedia does, so if you want to learn more, you should check out their [article about color blindness](#).

Dichromacy



Original Color

55.4068, 12.2331, 21.4540

Protanopia

55.6234, -5.1741, 19.9388

Deuteranopia

55.3815, 3.9055, 21.5567



Tritanopia

55.3151, 21.5860, 7.0327

Trichromacy



Original Color

55.4068, 12.2331, 21.4540

Protanomaly

55.3633, 1.1486, 20.3927

Deuteranomaly

55.3949, 6.7364, 21.6176

Tritanomaly

55.3067, 18.2547, 12.8745

Monochromacy



Original Color

55.4068, 12.2331, 21.4540

Achromatopsia

55.6299, -2.9683, 3.0225

Achromatomaly

55.1717, 1.7398, 10.5678

CSS Examples

Text

The CSS property to change the color of the text to HunterLab 55.4068, 12.2331, 21.4540 is called "color". The color property can be set on classes, ids or directly on the HTML element.

This example shows how text in the color `rgb(195, 138, 100)` looks like.

```
.text, #text, p{  
    color:rgb(195, 138, 100)  
}
```

If you want to add a text shadow in that color use the text-shadow property, you can generate a text shadow directly with our [CSS Text Shadow Generator](#).

Here you see how black text with a 4 pixel rgb(195, 138, 100) colored shadow looks like.

```
.shadow{ text-shadow: 4px 4px 2px rgb(195, 138, 100) }
```

Border

The CSS property to change the border of an element to HunterLab 55.4068, 12.2331, 21.4540 is called "border". The border property can be set on classes, ids or directly on the HTML element.

This example shows the color as border, it can be applied via the CSS property "border" or "border-color".

```
.border, #border, table{ border:4px solid rgb(195, 138, 100) }
```


If only the border color should be changed use the property `border-color`.

```
.border{ border-color:rgb(195, 138, 100) }
```

If you want to add a box shadow in that color use:

Here you see how a box with a 4 pixel `rgb(195, 138, 100)` colored shadow looks like.

```
.boxshadow{ -moz-box-shadow:4px 4px 4px  
4px rgb(195, 138, 100); -webkit-box-  
shadow:4px 4px 4px 4px rgb(195, 138, 100);  
box-shadow:4px 4px 4px 4px rgb(195, 138,  
100) }
```

Background

The CSS property to change the background color of an element to HunterLab 55.4068, 12.2331, 21.4540 is called "background". The background property can be set on classes, ids or directly on the HTML element.

```
.background, #background, body{  
background: rgb(195, 138, 100) }
```

If only the background color should be changed can be used:

```
.background{ background-color: rgb(195,  
138, 100) }
```

This example shows the color as background, it is applied via the CSS property "background".

To optimize and compress your CSS code, you can use our [online CSS compressor and optimizer](#) based on csstidy. If you want to create a linear or radial gradient as background or border, check our [CSS Gradient Generator](#).

Hey! You found this booklet interesting? Support Converting Colors with the new Membership Option!

The pro membership hides all ads, plus gives you double the colors in the color bucket, and more awesome pro features!

[Learn more, Memberships starting at \\$2.50/m!](#)

**Follow me
on Twitter!**

@ConvertingColor