

Converting Colors

HunterLab(55.4707, 8.8776,
11.5146)

Have a look what the booklet for
HunterLab(55.4707, 8.8776,
11.5146) contains.

HunterLab(55.6145, 8.7873, 11.5314)	3
<i>Conversions</i>	4
<i>Details</i>	6
<i>Harmonies</i>	12
<i>Previews</i>	24
<i>Color Blindness Simulation</i>	28
<i>CSS Examples</i>	31

Color

**HunterLab(55.6145, 8.7873,
11.5314)**

Conversions

Conversions Part 1

Format	Color
Hex	B68E83
RGB	182, 142, 131
RGB Percent	71%, 56%, 51%
CMY	0.2863, 0.4431, 0.4863
CMYK	0.00, 0.22, 0.28, 0.29
HSL	13°, 26%, 61%
HSV	13°, 28%, 71%
XYZ	33.0611, 30.9297, 25.7002
YIQ	152.7060, 27.3710, 5.0590

Conversions

Conversions Part 2

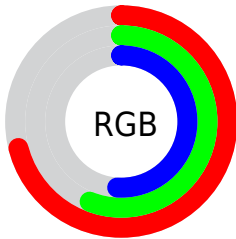
Format	Color
RYB	182, 145, 131
Decimal	11964035
CIELab	62.45, 13.50, 11.66
CIELCh	62, 17.833, 40.813
Yxy	30.9312, 0.3686, 0.3449
Android (android.graphics.Color)	4290154115 (0xFFB68E83)
YUV	152.7060, -10.7011, 25.6908
Hunter-Lab	55.6145, 8.7873, 11.5314

Details

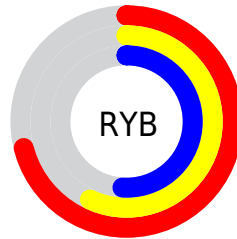
The HunterLab color $55.6145, 8.7873, 11.5314$ is a light color, and the websafe version is hex $CC9999$. A complement of this color would be $61.0961, -12.3567, -5.5169$, and the grayscale version is $56.3559, -3.0070, 3.0619$.

A 20% lighter version of the original color is $78.2887, 8.8893, 14.0541$, and $35.8506, 8.2231, 9.0332$ is the 20% darker color. If you saturate the color by 10%, you get $51.4793, 13.7430, 14.0363$, and if you desaturate by 10%, it is $59.9931, 4.1103, 8.8556$.

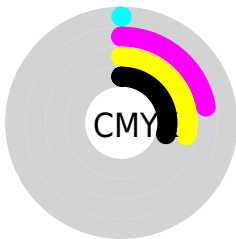
Distribution



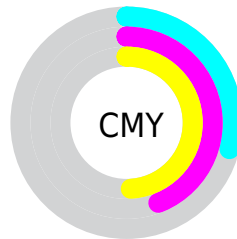
- Red (71%)
- Green (56%)
- Blue (51%)



- Red (71%)
- Yellow (57%)
- Blue (51%)



- Cyan (0%)
- Magenta (22%)
- Yellow (28%)
- Black (29%)



- Cyan (29%)
- Magenta (44%)
- Yellow (49%)

Brightness & Saturation Gradients

These gradients show how the HunterLab color 55.6145, 8.7873, 11.5314 changes by changing the brightness by 10 percent. The first figure shows a shift by +10% for each color and the second figure -10%.

Similar to the brightness gradients but the following saturation gradients show a change of the HunterLab color 55.6145, 8.7873, 11.5314 by changing the saturation by 10% instead.

■ 55.6145, 8.7873,
11.5314

■ 55.6145, 8.7873,
11.5314

174.9917, 7.5197,
22.5878

■ 45.3282, 8.6232,
10.3093

■ 78.1867, 8.8881,
13.9561

■ 35.7671, 8.3741,
9.0678

■ 90.3970, 8.8437,
15.1676

■ 26.9927, 8.0238,
7.7931

■ 103.1841, 8.7426,
16.3833

■ 19.0831, 7.5525,
6.4613

116.5230, 8.5894,
17.6055

■ 12.1458, 6.9318,
5.1544

130.3917, 8.3877,
18.8359

■ 5.2074, 11.0159,
3.6452

144.7708, 8.1404,

0.0000, NaN, NaN

20.0758

0.0000, NaN, NaN

159.6428, 7.8503,
21.3262

0.0000, NaN, NaN

■ 55.6145, 8.7873,
11.5314

■ 55.6145, 8.7873,
11.5314

■ 51.4793, 13.7430,
14.0363

■ 59.9931, 4.1103,
8.8556

■ 47.6202, 18.9785,
16.3140

■ 64.5805, -0.2952,
6.0460

■ 44.0809, 24.4544,
18.2953

■ 69.3525, -4.4538,
3.1323

■ 40.9093, 30.0817,
19.8943

■ 74.2879, -8.3913,
0.1352

■ 38.1562, 35.7003,
21.0171

■ 79.3689, -12.1335,
-2.9306

■ 35.8694, 41.0672,
21.5834

■ 84.5809, -15.7048,
-6.0543

■ 34.0814, 45.8523,
21.6237

■ 89.7886, -19.8210,
-7.4919

■ 33.7843, 46.6840,
21.6350

■ 94.1728, -26.2421,
-1.9945

Harmonies

Analogous

The Analogous color harmony consists of three colors that are next to each other on the color wheel.



55.6158, 12.4658, 5.6262



55.6145, 8.7873, 11.5314



55.6158, 2.0214, 14.8389

Triad

The Triadic color harmony groups three colors that are evenly spaced from another and form a triangle on the color wheel.



55.6158, 8.7852, 11.5323



55.6158, -16.3793, 7.4953



55.6158, -0.1420, -12.8062

Complementary

The Complementary color scheme is a pair of colors which are on the opposite of each other on the color wheel.



55.6145, 8.7873, 11.5314



61.0961, -12.3567, -5.5169

Split Complementary

Split-complementary colors differ from the complementary color scheme. The scheme consists of three colors, the original color and two neighbors of the complement color.



55.6158, -7.7923, -12.1245



55.6145, 8.7873, 11.5314



55.6158, -16.8876, 0.2967

Square

The Square scheme is like the rectangle color scheme, but the four colors are evenly spaced on the color wheel.



55.6158, 8.7852, 11.5323



55.6158, -12.3953, 12.7386



55.6158, -13.8242, -7.0773



55.6158, 7.1270, -8.8290

Rectangle

The Rectangle color scheme consists of four colors that form a rectangle on the color wheel.



55.6145, 8.7873, 11.5314



55.6158, -3.1822, 15.4374



55.6158, -13.8242, -7.0773



55.6158, -2.7585, -13.1267

Sweetspot

The Sweet Spot groups the original color and five complimentary colors.



55.6158, 8.7852, 11.5323



86.8841, -0.3318, 8.1848



53.9897, 20.6893, -9.1206



40.3876, 0.2540, 4.1190



96.5975, -5.1542, 5.2483



43.2801, -2.3093, 2.3515

Same Dimension

The Same Dimension uses a secret algorithm to generate beautiful new colors.



55.6158, 8.7852, 11.5323



71.1954, 16.1608, 17.7679



62.5393, -3.4039, 18.1193



30.5254, 0.1300, 3.0657



28.5346, 38.7868, 18.2619



6.1560, 5.0574, 3.8818

Inverse Universe

The Inverse Universe completely reimagines the original color for something new.



61.0961, -12.3567, -5.5169



80.1873, -18.6804, -10.2418



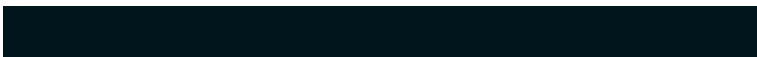
53.7154, -0.5270, -15.7590



31.4211, -3.3032, 0.2843



40.3750, -13.5325, -21.2526



8.1106, -3.2540, -3.1132

Previews

White Background



This preview shows how the HunterLab color 55.6145, 8.7873, 11.5314 looks on a white background.

Color Contrast Check

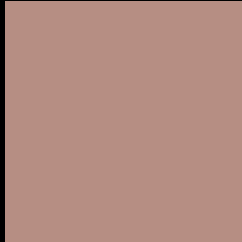
Large Text (above 18pt) WCAG AA × Fail

Any Text WCAG AA × Fail

Large Text (above 18pt) WCAG AAA × Fail

Any Text WCAG AAA × Fail

Black Background



This preview shows how the HunterLab color 55.6145, 8.7873, 11.5314 looks on a black background.

Color Contrast Check

Large Text (above 18pt) WCAG AA ✓ Pass

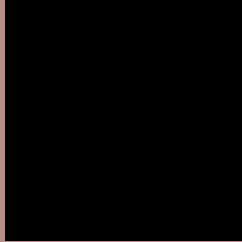
Any Text WCAG AA ✓ Pass

Large Text (above 18pt) WCAG AAA ✓ Pass

Any Text WCAG AAA ✓ Pass

If you want to check with other color combinations, try the [Color Contrast Checker](#).

HunterLab 55.6145, 8.7873, 11.5314 Background



This preview shows how black text looks on a background with the HunterLab color 55.6145, 8.7873, 11.5314.



This preview shows how white text looks on a background with the HunterLab color 55.6145, 8.7873,

Color Blindness Simulation

Color vision deficiency is a very complex topic, and I could not describe the different causes any better than Wikipedia does, so if you want to learn more, you should check out their [article about color blindness](#).

Dichromacy



Original Color

55.6145, 8.7873, 11.5314

Protanopia

55.8136, -3.1995, 9.9867

Deuteranopia

55.7259, 3.5136, 11.9297



Tritanopia

55.5496, 13.6640, 3.6716

Trichromacy



Original Color

55.6145, 8.7873, 11.5314

Protanomaly

55.7822, 1.0334, 10.4183

Deuteranomaly

55.7607, 5.0457, 11.9921

Tritanomaly

55.5037, 11.7766, 6.6480

Monochromacy



Original Color

55.6145, 8.7873, 11.5314

Achromatopsia

56.4399, -3.0115, 3.0665

Achromatomaly

56.0640, 1.1229, 6.2366

CSS Examples

Text

The CSS property to change the color of the text to HunterLab 55.6145, 8.7873, 11.5314 is called "color". The color property can be set on classes, ids or directly on the HTML element.

This example shows how text in the color `rgb(182, 142, 131)` looks like.

```
.text, #text, p{  
    color:rgb(182, 142, 131)  
}
```

If you want to add a text shadow in that color use the text-shadow property, you can generate a text shadow directly with our [CSS Text Shadow Generator](#).

Here you see how black text with a 4 pixel rgb(182, 142, 131) colored shadow looks like.

```
.shadow{ text-shadow: 4px 4px 2px rgb(182, 142, 131) }
```

Border

The CSS property to change the border of an element to HunterLab 55.6145, 8.7873, 11.5314 is called "border". The border property can be set on classes, ids or directly on the HTML element.

This example shows the color as border, it can be applied via the CSS property "border" or "border-color".

```
.border, #border, table{ border:4px solid rgb(182, 142, 131) }
```


If only the border color should be changed use the property `border-color`.

```
.border{ border-color:rgb(182, 142, 131) }
```

If you want to add a box shadow in that color use:

Here you see how a box with a 4 pixel `rgb(182, 142, 131)` colored shadow looks like.

```
.boxshadow{ -moz-box-shadow:4px 4px 4px  
4px rgb(182, 142, 131); -webkit-box-  
shadow:4px 4px 4px 4px rgb(182, 142, 131);  
box-shadow:4px 4px 4px 4px rgb(182, 142,  
131) }
```

Background

The CSS property to change the background color of an element to HunterLab 55.6145, 8.7873, 11.5314 is called "background". The background property can be set on classes, ids or directly on the HTML element.

```
.background, #background, body{  
background: rgb(182, 142, 131) }
```

If only the background color should be changed can be used:

```
.background{ background-color: rgb(182,  
142, 131) }
```

This example shows the color as background, it is applied via the CSS property "background".

To optimize and compress your CSS code, you can use our [online CSS compressor and optimizer](#) based on csstidy. If you want to create a linear or radial gradient as background or border, check our [CSS Gradient Generator](#).

Hey! You found this booklet interesting? Support Converting Colors with the new Membership Option!

The pro membership hides all ads, plus gives you double the colors in the color bucket, and more awesome pro features!

[Learn more, Memberships starting at \\$2.50/m!](#)

**Follow me
on Twitter!**

@ConvertingColor