

Converting Colors

HunterLab(55.4845, 13.8255,
7.8858)

Have a look what the booklet for
HunterLab(55.4845, 13.8255,
7.8858) contains.

HunterLab(55.3491, 13.8065, 7.7700)	3
<i>Conversions</i>	4
<i>Details</i>	6
<i>Harmonies</i>	12
<i>Previews</i>	24
<i>Color Blindness Simulation</i>	28
<i>CSS Examples</i>	31

Color

**HunterLab(55.3491, 13.8065,
7.7700)**

Conversions

Conversions Part 1

Format	Color
Hex	BB8A8C
RGB	187, 138, 140
RGB Percent	73%, 54%, 55%
CMY	0.2667, 0.4588, 0.4510
CMYK	0.00, 0.26, 0.25, 0.27
HSL	358°, 26%, 64%
HSV	358°, 26%, 73%
XYZ	34.3156, 30.6352, 28.9156
YIQ	152.8790, 28.5620, 11.0100

Conversions

Conversions Part 2

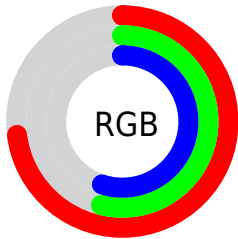
Format	Color
RYB	187, 138, 140
Decimal	12290700
CIELab	62.20, 18.97, 6.27
CIELCh	62, 19.976, 18.298
Yxy	30.6367, 0.3656, 0.3264
Android (android.graphics.Color)	4290480780 (0xFFBB8A8C)
YUV	152.8790, -6.3493, 29.9241
Hunter-Lab	55.3491, 13.8065, 7.7700

Details

The HunterLab color **55.3491, 13.8065, 7.7700** is a light color, and the websafe version is hex **CC9999**. A complement of this color would be **66.6689, -17.5802, -0.0475**, and the grayscale version is **56.4087, -3.0098, 3.0648**.

A 20% lighter version of the original color is **77.9632, 14.1784, 9.9206**, and **35.6429, 12.7853, 6.0966** is the 20% darker color. If you saturate the color by 10%, you get **50.2373, 20.9654, 9.5686**, and if you desaturate by 10%, it is **60.8651, 6.8856, 6.1413**.

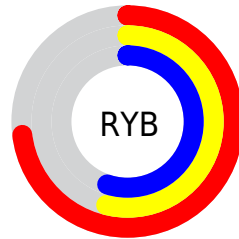
Distribution



Red (73%)

Green (54%)

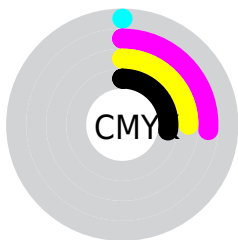
Blue (55%)



Red (73%)

Yellow (54%)

Blue (55%)

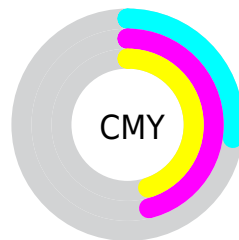


Cyan (0%)

Magenta (26%)

Yellow (25%)

Black (27%)



Cyan (27%)

Magenta (46%)

Yellow (45%)

Brightness & Saturation Gradients

These gradients show how the HunterLab color 55.3491, 13.8065, 7.7700 changes by changing the brightness by 10 percent. The first figure shows a shift by +10% for each color and the second figure -10%.

Similar to the brightness gradients but the following saturation gradients show a change of the HunterLab color 55.3491, 13.8065, 7.7700 by changing the saturation by 10% instead.

■ 55.3491, 13.8065,
7.7700

■ 55.3491, 13.8065,
7.7700

174.6027, 14.5362,
16.6602

■ 45.0803, 13.3716,
6.8666

■ 77.8894, 14.4115,
9.6231

■ 35.5381, 12.8373,
5.9729

■ 90.0849, 14.6034,
10.5740

■ 26.7843, 12.1854,
5.0847

■ 102.8579, 14.7298,
11.5426

■ 18.8974, 11.3951,
4.1924

116.1833, 14.7958,
12.5293

■ 11.9862, 10.4417,
3.2772

130.0390, 14.8060,
13.5343

■ 4.9348, 16.4840,
3.4543

144.4056, 14.7640,

0.0000, NaN, NaN

14.5578

0.0000, NaN, NaN

159.2654, 14.6731,
15.5998

0.0000, NaN, NaN

■ 55.3491, 13.8065,
7.7700

■ 55.3491, 13.8065,
7.7700

■ 50.2373, 20.9654,
9.5686

■ 60.8651, 6.8856,
6.1413

■ 45.6044, 28.2762,
11.5260

■ 66.7176, 0.2335,
4.6701

■ 41.5451, 35.5299,
13.6010

■ 72.8573, -6.1628,
3.3402

■ 38.1615, 42.3596,
15.6978

■ 79.2441, -12.3295,
2.1328

■ 35.5486, 48.2367,
17.6576

■ 85.8461, -18.2976,
1.0300

■ 33.7658, 52.5824,
19.2805

■ 92.6379, -24.0980,
0.0157

■ 32.7902, 55.0457,
20.3893

■ 94.5012, -25.0278,
-1.5638

■ 32.5293, 55.7587,
20.6217

Harmonies

Analogous

The Analogous color harmony consists of three colors that are next to each other on the color wheel.



55.3504, 14.3600, -0.3063



55.3491, 13.8065, 7.7700



55.3504, 8.5946, 13.6076

Triad

The Triadic color harmony groups three colors that are evenly spaced from another and form a triangle on the color wheel.



55.3504, 13.8044, 7.7710



55.3504, -14.8785, 12.5717



55.3504, -6.3022, -14.9052

Complementary

The Complementary color scheme is a pair of colors which are on the opposite of each other on the color wheel.



55.3491, 13.8065, 7.7700



66.6689, -17.5802, -0.0475

Split Complementary

Split-complementary colors differ from the complementary color scheme. The scheme consists of three colors, the original color and two neighbors of the complement color.



55.3504, -13.6314, -10.2054



55.3491, 13.8065, 7.7700



55.3504, -18.3750, 6.1384

Square

The Square scheme is like the rectangle color scheme, but the four colors are evenly spaced on the color wheel.



55.3504, 13.8044, 7.7710



55.3504, -8.1013, 16.0706



55.3504, -17.9331, -2.2091



55.3504, 2.3837, -14.2874

Rectangle

The Rectangle color scheme consists of four colors that form a rectangle on the color wheel.



55.3491, 13.8065, 7.7700



55.3504, 3.3539, 15.8315



55.3504, -17.9331, -2.2091



55.3504, -8.9960, -13.8686

Sweetspot

The Sweet Spot groups the original color and five complimentary colors.



55.3504, 13.8044, 7.7710



87.7444, 2.0018, 6.6142



56.5904, 20.6963, -14.0237



40.6121, 1.5667, 3.2405



97.7295, -5.2146, 5.3098



44.2712, -2.3622, 2.4053

Same Dimension

The Same Dimension uses a secret algorithm to generate beautiful new colors.



55.3504, 13.8044, 7.7710



70.3741, 23.5184, 11.6468



61.2861, 2.4406, 14.5436



30.8909, 1.0985, 2.4387



27.0062, 46.3013, 17.0456



5.3653, 9.2392, 3.0722

Inverse Universe

The Inverse Universe completely reimagines the original color for something new.



55.3504, 13.8044, 7.7710



70.3741, 23.5184, 11.6468



59.9038, -6.8021, -9.7388



30.8909, 1.0985, 2.4387



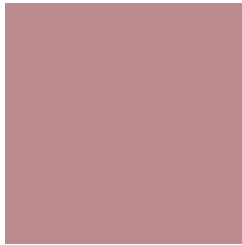
27.0062, 46.3013, 17.0456



5.3653, 9.2392, 3.0722

Previews

White Background



This preview shows how the HunterLab color 55.3491, 13.8065, 7.7700 looks on a white background.

Color Contrast Check

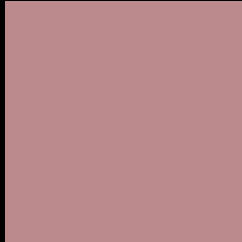
Large Text (above 18pt) WCAG AA × Fail

Any Text WCAG AA × Fail

Large Text (above 18pt) WCAG AAA × Fail

Any Text WCAG AAA × Fail

Black Background



This preview shows how the HunterLab color 55.3491, 13.8065, 7.7700 looks on a black background.

Color Contrast Check

Large Text (above 18pt) WCAG AA ✓ Pass

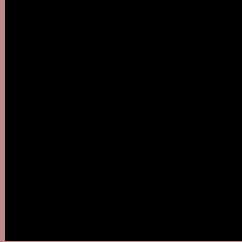
Any Text WCAG AA ✓ Pass

Large Text (above 18pt) WCAG AAA ✓ Pass

Any Text WCAG AAA ✓ Pass

If you want to check with other color combinations, try the [Color Contrast Checker](#).

HunterLab 55.3491, 13.8065, 7.7700 Background



This preview shows how black text looks on a background with the HunterLab color 55.3491, 13.8065, 7.7700.



This preview shows how white text looks on a background with the HunterLab color 55.3491, 13.8065,

7.7700.

Color Blindness Simulation

Color vision deficiency is a very complex topic, and I could not describe the different causes any better than Wikipedia does, so if you want to learn more, you should check out their [article about color blindness](#).

Dichromacy



Original Color

55.3491, 13.8065, 7.7700

Protanopia

55.4881, -2.2079, 4.6578

Deuteranopia

55.3723, 4.2018, 8.0394



Tritanopia

55.3979, 15.6713, 4.8672

Trichromacy



Original Color

55.3491, 13.8065, 7.7700

Protanomaly

55.3881, 3.1002, 5.9398

Deuteranomaly

55.1726, 7.7465, 7.8838

Tritanomaly

55.3139, 15.2392, 6.0688

Monochromacy



Original Color

55.3491, 13.8065, 7.7700

Achromatopsia

56.4399, -3.0115, 3.0665

Achromatomaly

55.9618, 2.3892, 4.8420

CSS Examples

Text

The CSS property to change the color of the text to HunterLab 55.3491, 13.8065, 7.7700 is called "color". The color property can be set on classes, ids or directly on the HTML element.

This example shows how text in the color `rgb(187, 138, 140)` looks like.

```
.text, #text, p{  
    color:rgb(187, 138, 140)  
}
```

If you want to add a text shadow in that color use the text-shadow property, you can generate a text shadow directly with our [CSS Text Shadow Generator](#).

Here you see how black text with a 4 pixel rgb(187, 138, 140) colored shadow looks like.

```
.shadow{ text-shadow: 4px 4px 2px rgb(187, 138, 140) }
```

Border

The CSS property to change the border of an element to HunterLab 55.3491, 13.8065, 7.7700 is called "border". The border property can be set on classes, ids or directly on the HTML element.

This example shows the color as border, it can be applied via the CSS property "border" or "border-color".

```
.border, #border, table{ border:4px solid rgb(187, 138, 140) }
```


If only the border color should be changed use the property `border-color`.

```
.border{ border-color:rgb(187, 138, 140) }
```

If you want to add a box shadow in that color use:

Here you see how a box with a 4 pixel `rgb(187, 138, 140)` colored shadow looks like.

```
.boxshadow{ -moz-box-shadow:4px 4px 4px  
4px rgb(187, 138, 140); -webkit-box-  
shadow:4px 4px 4px 4px rgb(187, 138, 140);  
box-shadow:4px 4px 4px 4px rgb(187, 138,  
140) }
```

Background

The CSS property to change the background color of an element to HunterLab 55.3491, 13.8065, 7.7700 is called "background". The background property can be set on classes, ids or directly on the HTML element.

```
.background, #background, body{  
background: rgb(187, 138, 140) }
```

If only the background color should be changed can be used:

```
.background{ background-color: rgb(187,  
138, 140) }
```

This example shows the color as background, it is applied via the CSS property "background".

To optimize and compress your CSS code, you can use our [online CSS compressor and optimizer](#) based on csstidy. If you want to create a linear or radial gradient as background or border, check our [CSS Gradient Generator](#).

Hey! You found this booklet interesting? Support Converting Colors with the new Membership Option!

The pro membership hides all ads, plus gives you double the colors in the color bucket, and more awesome pro features!

[Learn more, Memberships starting at \\$2.50/m!](#)

**Follow me
on Twitter!**

@ConvertingColor