

Converting Colors

HunterLab(55.5567, 8.0576,
4.9162)

Have a look what the booklet for
HunterLab(55.5567, 8.0576, 4.9162)
contains.

HunterLab(55.5567, 8.0576, 4.9162)	3
<i>Conversions</i>	4
<i>Details</i>	6
<i>Harmonies</i>	12
<i>Previews</i>	24
<i>Color Blindness Simulation</i>	28
<i>CSS Examples</i>	31

Color

**HunterLab(55.5567, 8.0576,
4.9162)**

Conversions

Conversions Part 1

Format	Color
Hex	AF8F93
RGB	175, 143, 147
RGB Percent	69%, 56%, 58%
CMY	0.3137, 0.4392, 0.4235
CMYK	0.00, 0.18, 0.16, 0.31
HSL	353°, 17%, 62%
HSV	353°, 18%, 69%
XYZ	32.7681, 30.8655, 31.8343
YIQ	153.0240, 17.7880, 8.0280

Conversions

Conversions Part 2

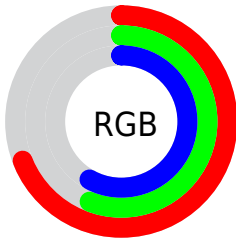
Format	Color
R _Y B	175, 143, 147
Decimal	11505555
CIE Lab	62.40, 12.69, 2.42
CIE LCh	62, 12.919, 10.801
Yxy	30.8669, 0.3432, 0.3233
Android (android.graphics.Color)	4289695635 (0xFFAF8F93)
YUV	153.0240, -2.9698, 19.2730
Hunter-Lab	55.5567, 8.0576, 4.9162

Details

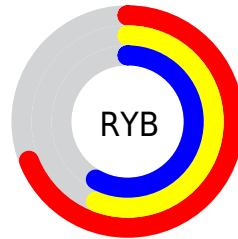
The HunterLab color $55.5567, 8.0576, 4.9162$ is a light color, and the websafe version is hex $CC9999$. A complement of this color would be $62.8018, -13.2385, 2.0909$, and the grayscale version is $56.4573, -3.0124, 3.0674$.

A 20% lighter version of the original color is $78.1911, 8.0452, 6.4211$, and $35.8181, 7.5763, 3.4832$ is the 20% darker color. If you saturate the color by 10%, you get $50.5635, 14.6683, 5.9480$, and if you desaturate by 10%, it is $60.8693, 1.6515, 4.0976$.

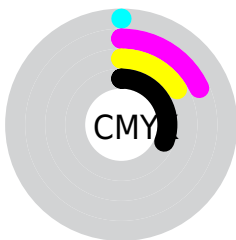
Distribution



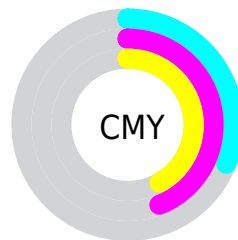
- Red (69%)
- Green (56%)
- Blue (58%)



- Red (69%)
- Yellow (56%)
- Blue (58%)



- Cyan (0%)
- Magenta (18%)
- Yellow (16%)
- Black (31%)



- Cyan (31%)
- Magenta (44%)
- Yellow (42%)

Brightness & Saturation Gradients

These gradients show how the HunterLab color 55.5567, 8.0576, 4.9162 changes by changing the brightness by 10 percent. The first figure shows a shift by +10% for each color and the second figure -10%.

Similar to the brightness gradients but the following saturation gradients show a change of the HunterLab color 55.5567, 8.0576, 4.9162 by changing the saturation by 10% instead.

■ 55.5567, 8.0576,
4.9162

■ 55.5567, 8.0576,
4.9162

174.9070, 6.4957,
12.3218

■ 45.2742, 7.9340,
4.2279

■ 78.1220, 8.0841,
6.3809

■ 35.7172, 7.7274,
3.5679

■ 90.3290, 8.0047,
7.1539

■ 26.9473, 7.4222,
2.9376

103.1130, 7.8702,
7.9532

■ 19.0426, 6.9991,
2.3366

116.4490, 7.6847,
8.7782

■ 12.1109, 6.4298,
1.7627

130.3149, 7.4517,
9.6282

■ 5.1493, 10.4636,
2.2292

144.6913, 7.1742,

0.0000, NaN, NaN

10.5026

0.0000, NaN, NaN

159.5606, 6.8548,
11.4006

0.0000, NaN, NaN

■ 55.5567, 8.0576,
4.9162

■ 55.5567, 8.0576,
4.9162

■ 50.5635, 14.6683,
5.9480

■ 60.8693, 1.6515,
4.0976

■ 45.9453, 21.4482,
7.2177

■ 66.4500, -4.5423,
3.4595

■ 41.7761, 28.2849,
8.7426

■ 72.2623, -10.5415,
2.9753

■ 38.1411, 34.9568,
10.5122

■ 78.2762, -16.3699,
2.6207

■ 35.1314, 41.0972,
12.4678

■ 84.4675, -22.0522,
2.3753

■ 32.8290, 46.2103,
14.4840

■ 90.8168, -27.6122,
2.2224

■ 31.2797, 49.7945,
16.3744

■ 93.7030, -28.0413,
-2.1876

■ 30.4093, 51.7493,
17.9068

■ 93.7305, -27.8843,
-2.5768

■ 30.2844, 52.0524,
18.1002

Harmonies

Analogous

The Analogous color harmony consists of three colors that are next to each other on the color wheel.



55.5580, 7.6153, -0.4651



55.5567, 8.0576, 4.9162



55.5580, 5.4554, 9.3333

Triad

The Triadic color harmony groups three colors that are evenly spaced from another and form a triangle on the color wheel.



55.5580, 8.0558, 4.9172



55.5580, -9.8567, 10.2594



55.5580, -6.4780, -7.5911

Complementary

The Complementary color scheme is a pair of colors which are on the opposite of each other on the color wheel.



55.5567, 8.0576, 4.9162



62.8018, -13.2385, 2.0909

Split Complementary

Split-complementary colors differ from the complementary color scheme. The scheme consists of three colors, the original color and two neighbors of the complement color.



55.5580, -10.9165, -4.1243



55.5567, 8.0576, 4.9162



55.5580, -12.8129, 6.3009

Square

The Square scheme is like the rectangle color scheme, but the four colors are evenly spaced on the color wheel.



55.5580, 8.0558, 4.9172



55.5580, -4.9789, 12.2074



55.5580, -13.1930, 1.0621



55.5580, -0.9268, -8.0559

Rectangle

The Rectangle color scheme consists of four colors that form a rectangle on the color wheel.



55.5567, 8.0576, 4.9162



55.5580, 2.4056, 11.2734



55.5580, -13.1930, 1.0621



55.5580, -8.1437, -6.7231

Sweetspot

The Sweet Spot groups the original color and five complimentary colors.



55.5580, 8.0558, 4.9172



83.8104, -0.4699, 5.1861



56.0085, 11.2929, -8.2242



39.2719, 0.0494, 2.4742



94.3401, -5.0338, 5.1257



41.3092, -2.2042, 2.2444

Same Dimension

The Same Dimension uses a secret algorithm to generate beautiful new colors.



55.5580, 8.0558, 4.9172



71.5577, 14.3738, 7.1091



58.6961, 1.6370, 9.9457



28.3391, 1.0764, 1.9601



25.6381, 44.0866, 15.1665



4.3342, 7.5673, 1.6771

Inverse Universe

The Inverse Universe completely reimagines the original color for something new.



55.5580, 8.0558, 4.9172



71.5577, 14.3738, 7.1091



59.3507, -6.9868, -4.0670



28.3391, 1.0764, 1.9601



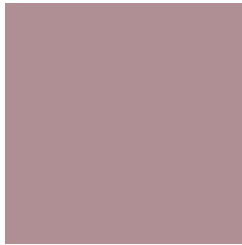
25.6381, 44.0866, 15.1665



4.3342, 7.5673, 1.6771

Previews

White Background



This preview shows how the HunterLab color 55.5567, 8.0576, 4.9162 looks on a white background.

Color Contrast Check

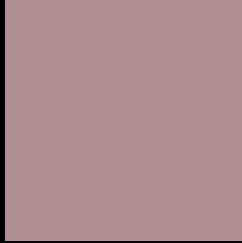
Large Text (above 18pt) WCAG AA × Fail

Any Text WCAG AA × Fail

Large Text (above 18pt) WCAG AAA × Fail

Any Text WCAG AAA × Fail

Black Background



This preview shows how the HunterLab color 55.5567, 8.0576, 4.9162 looks on a black background.

Color Contrast Check

Large Text (above 18pt) WCAG AA ✓ Pass

Any Text WCAG AA ✓ Pass

Large Text (above 18pt) WCAG AAA ✓ Pass

Any Text WCAG AAA ✓ Pass

If you want to check with other color combinations, try the [Color Contrast Checker](#).

HunterLab 55.5567, 8.0576, 4.9162 Background



This preview shows how black text looks on a background with the HunterLab color 55.5567, 8.0576, 4.9162.



This preview shows how white text looks on a background with the HunterLab color 55.5567, 8.0576,

4.9162.

Color Blindness Simulation

Color vision deficiency is a very complex topic, and I could not describe the different causes any better than Wikipedia does, so if you want to learn more, you should check out their [article about color blindness](#).

Dichromacy



Original Color

55.5567, 8.0576, 4.9162

Protanopia

55.6031, -1.5800, 3.0152

Deuteranopia

55.5415, 3.7275, 5.2602



Tritanopia

55.5662, 9.8192, 2.2549

Trichromacy



Original Color

55.5567, 8.0576, 4.9162

Protanomaly

55.4534, 2.2248, 3.3586

Deuteranomaly

55.5627, 5.2186, 5.3105

Tritanomaly

55.5072, 9.5093, 3.0963

Monochromacy



Original Color

55.5567, 8.0576, 4.9162

Achromatopsia

56.4399, -3.0115, 3.0665

Achromatomaly

55.9521, 1.0809, 3.4715

CSS Examples

Text

The CSS property to change the color of the text to HunterLab 55.5567, 8.0576, 4.9162 is called "color". The color property can be set on classes, ids or directly on the HTML element.

This example shows how text in the color `rgb(175, 143, 147)` looks like.

```
.text, #text, p{  
    color:rgb(175, 143, 147)  
}
```

If you want to add a text shadow in that color use the text-shadow property, you can generate a text shadow directly with our [CSS Text Shadow Generator](#).

Here you see how black text with a 4 pixel rgb(175, 143, 147) colored shadow looks like.

```
.shadow{ text-shadow: 4px 4px 2px rgb(175, 143, 147) }
```

Border

The CSS property to change the border of an element to HunterLab 55.5567, 8.0576, 4.9162 is called "border". The border property can be set on classes, ids or directly on the HTML element.

This example shows the color as border, it can be applied via the CSS property "border" or "border-color".

```
.border, #border, table{ border:4px solid rgb(175, 143, 147) }
```


If only the border color should be changed use the property `border-color`.

```
.border{ border-color:rgb(175, 143, 147) }
```

If you want to add a box shadow in that color use:

Here you see how a box with a 4 pixel `rgb(175, 143, 147)` colored shadow looks like.

```
.boxshadow{ -moz-box-shadow:4px 4px 4px  
4px rgb(175, 143, 147); -webkit-box-  
shadow:4px 4px 4px 4px rgb(175, 143, 147);  
box-shadow:4px 4px 4px 4px rgb(175, 143,  
147) }
```

Background

The CSS property to change the background color of an element to HunterLab 55.5567, 8.0576, 4.9162 is called "background". The background property can be set on classes, ids or directly on the HTML element.

```
.background, #background, body{  
background: rgb(175, 143, 147) }
```

If only the background color should be changed can be used:

```
.background{ background-color: rgb(175,  
143, 147) }
```

This example shows the color as background, it is applied via the CSS property "background".

To optimize and compress your CSS code, you can use our [online CSS compressor and optimizer](#) based on csstidy. If you want to create a linear or radial gradient as background or border, check our [CSS Gradient Generator](#).

Hey! You found this booklet interesting? Support Converting Colors with the new Membership Option!

The pro membership hides all ads, plus gives you double the colors in the color bucket, and more awesome pro features!

[Learn more, Memberships starting at \\$2.50/m!](#)

**Follow me
on Twitter!**

@ConvertingColor