

Converting Colors

HunterLab(55.5904, 4.7545,
15.7531)

Have a look what the booklet for
HunterLab(55.5904, 4.7545,
15.7531) contains.

| | |
|--|----|
| HunterLab(55.4467, 4.9015, 15.5893) | 3 |
| <i>Conversions</i> | 4 |
| <i>Details</i> | 6 |
| <i>Harmonies</i> | 12 |
| <i>Previews</i> | 24 |
| <i>Color Blindness Simulation</i> | 28 |
| <i>CSS Examples</i> | 31 |

Color

**HunterLab(55.4467, 4.9015,
15.5893)**

Conversions

Conversions Part 1

| Format | Color |
|-------------|----------------------------|
| Hex | B29077 |
| RGB | 178, 144, 119 |
| RGB Percent | 70%, 56%, 47% |
| CMY | 0.3020, 0.4353, 0.5333 |
| CMYK | 0.00, 0.19, 0.33, 0.30 |
| HSL | 25°, 28%, 58% |
| HSV | 25°, 33%, 70% |
| XYZ | 31.6631, 30.7434, 21.7180 |
| YIQ | 151.3160, 28.2890, -0.5670 |

Conversions

Conversions Part 2

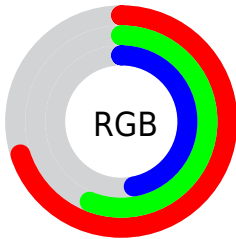
| Format | Color |
|-------------------------------------|--------------------------------|
| RYB | 178, 162, 119 |
| Decimal | 11702391 |
| CIELab | 62.29, 9.15, 18.13 |
| CIElCh | 62, 20.307, 63.220 |
| Yxy | 30.7448, 0.3764, 0.3655 |
| Android (android.graphics.Color) | 4289892471 (0xFFB29077) |
| YUV | 151.3160, -15.9318, 23.4019 |
| Hunter-Lab | 55.4467, 4.9015, 15.5893 |

Details

The HunterLab color $55.4467, 4.9015, 15.5893$ is a light color, and the websafe version is hex $CC9999$. A complement of this color would be $54.6971, -7.4949, -12.0833$, and the grayscale version is $55.8131, -2.9780, 3.0324$.

A 20% lighter version of the original color is $78.0965, 4.5964, 18.9531$, and $35.6829, 4.6890, 12.4419$ is the 20% darker color. If you saturate the color by 10%, you get $52.3346, 8.0396, 18.3823$, and if you desaturate by 10%, it is $58.7051, 2.0457, 12.3823$.

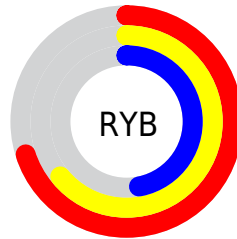
Distribution



Red (70%)

Green (56%)

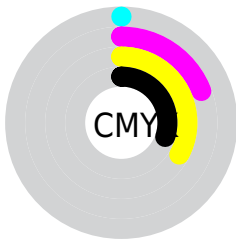
Blue (47%)



Red (70%)

Yellow (64%)

Blue (47%)

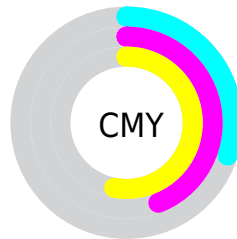


Cyan (0%)

Magenta (19%)

Yellow (33%)

Black (30%)



Cyan (30%)

Magenta (44%)

Yellow (53%)

Brightness & Saturation Gradients


These gradients show how the HunterLab color 55.4467, 4.9015, 15.5893 changes by changing the brightness by 10 percent. The first figure shows a shift by +10% for each color and the second figure -10%.

Similar to the brightness gradients but the following saturation gradients show a change of the HunterLab color 55.4467, 4.9015, 15.5893 by changing the saturation by 10% instead.

 55.4467, 4.9015,
15.5893


 55.4467, 4.9015,
15.5893

174.7458, 2.0270,
29.3630

 45.1714, 4.9581,
13.9609

 77.9988, 4.5939,
18.7382

 35.6223, 4.9431,
12.2737


 90.1997, 4.3589,
20.2779

 26.8609, 4.8428,
10.5017


 102.9779, 4.0749,
21.8038

 18.9657, 4.6403,
8.6024

116.3082, 3.7456,
23.3208

 12.0448, 4.3101,
7.3770

130.1688, 3.3738,
24.8326

 5.0368, 7.6465,
3.5258

144.5399, 2.9621,

0.0000, NaN, NaN

26.3421

0.0000, NaN, NaN

159.4042, 2.5125,
27.8516

0.0000, NaN, NaN

■ 55.4467, 4.9015,
15.5893

■ 55.4467, 4.9015,
15.5893

■ 52.3346, 8.0396,
18.3823

■ 58.7051, 2.0457,
12.3823

■ 49.3801, 11.4780,
20.7049

■ 62.0924, -0.5387,
8.8082

■ 46.6009, 15.2164,
22.5020

■ 65.5980, -2.8739,
4.9114

■ 44.0147, 19.2411,
23.7207

■ 69.2114, -4.9806,
0.7297

■ 41.6398, 23.5159,
24.3209

■ 72.9233, -6.8793,
-3.7043

■ 39.4931, 27.9728,
24.2933

■ 76.7256, -8.5894,
-8.3628

■ 38.1528, 31.0415,
24.0530

■ 80.6112, -10.1287,
-13.2223

■ 84.3258, -12.8961,
-14.7840

■ 87.6676, -18.0266,
-10.2788

Harmonies

Analogous

The Analogous color harmony consists of three colors that are next to each other on the color wheel.



55.4480, 11.9726, 11.1593



55.4467, 4.9015, 15.5893



55.4480, -3.9122, 16.8462

Triad

The Triadic color harmony groups three colors that are evenly spaced from another and form a triangle on the color wheel.



55.4480, 4.8994, 15.5901



55.4480, -18.9187, 2.1031



55.4480, 6.6524, -12.2686

Complementary

The Complementary color scheme is a pair of colors which are on the opposite of each other on the color wheel.



55.4467, 4.9015, 15.5893



54.6971, -7.4949, -12.0833

Split Complementary

Split-complementary colors differ from the complementary color scheme. The scheme consists of three colors, the original color and two neighbors of the complement color.



55.4480, -2.0044, -15.6550



55.4467, 4.9015, 15.5893



55.4480, -16.4653, -6.5818

Square

The Square scheme is like the rectangle color scheme, but the four colors are evenly spaced on the color wheel.



55.4480, 4.8994, 15.5901



55.4480, -17.3225, 9.8147



55.4480, -10.4076, -13.4275



55.4480, 13.0283, -4.7651

Rectangle

The Rectangle color scheme consists of four colors that form a rectangle on the color wheel.



55.4467, 4.9015, 15.5893



55.4480, -9.4994, 15.9065



55.4480, -10.4076, -13.4275



55.4480, 3.8941, -13.9751

Sweetspot

The Sweet Spot groups the original color and five complimentary colors.



55.4480, 4.8994, 15.5901



85.0034, -1.6939, 10.3447



49.9726, 22.3546, -4.7865



39.7042, -0.5859, 5.2052



95.4677, -5.0939, 5.1869



42.2927, -2.2566, 2.2978

Same Dimension

The Same Dimension uses a secret algorithm to generate beautiful new colors.



55.4480, 4.8994, 15.5901



71.4854, 9.7524, 23.8876



63.8091, -9.1425, 22.9418



30.1290, -0.6934, 3.4940



32.4570, 25.7929, 20.4514



6.6934, 2.4421, 4.1672

Inverse Universe

The Inverse Universe completely reimagines the original color for something new.



54.6971, -7.4949, -12.0833



70.2504, -10.4643, -21.3595



46.4016, 6.6637, -25.1094



30.0267, -2.4036, -0.3108



30.5051, 0.7577, -39.7643



6.3672, -1.4025, -4.9309

Previews

White Background



This preview shows how the HunterLab color 55.4467, 4.9015, 15.5893 looks on a white background.

Color Contrast Check

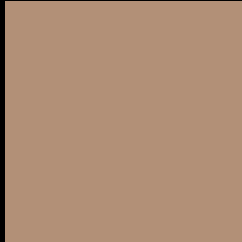
Large Text (above 18pt) WCAG AA × Fail

Any Text WCAG AA × Fail

Large Text (above 18pt) WCAG AAA × Fail

Any Text WCAG AAA × Fail

Black Background



This preview shows how the HunterLab color 55.4467, 4.9015, 15.5893 looks on a black background.

Color Contrast Check

Large Text (above 18pt) WCAG AA ✓ Pass

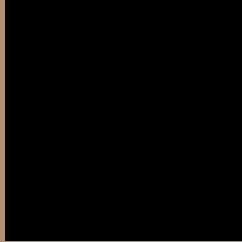
Any Text WCAG AA ✓ Pass

Large Text (above 18pt) WCAG AAA ✓ Pass

Any Text WCAG AAA ✓ Pass

If you want to check with other color combinations, try the [Color Contrast Checker](#).

HunterLab 55.4467, 4.9015, 15.5893 Background



This preview shows how black text looks on a background with the HunterLab color 55.4467, 4.9015, 15.5893.



This preview shows how white text looks on a background with the HunterLab color 55.4467, 4.9015,

Color Blindness Simulation

Color vision deficiency is a very complex topic, and I could not describe the different causes any better than Wikipedia does, so if you want to learn more, you should check out their [article about color blindness](#).

Dichromacy



Original Color

55.4467, 4.9015, 15.5893

Protanopia

55.3998, -3.7802, 14.3657

Deuteranopia

55.5093, 3.7013, 15.6279



Tritanopia

55.4815, 12.0996, 3.5644

Trichromacy



Original Color

55.4467, 4.9015, 15.5893

Protanomaly

55.4759, -0.6271, 14.8402

Deuteranomaly

55.6146, 4.0546, 15.7343

Tritanomaly

55.3327, 9.6477, 8.0917

Monochromacy



Original Color

55.4467, 4.9015, 15.5893

Achromatopsia

55.6299, -2.9683, 3.0225

Achromatomaly

55.3362, -0.2339, 7.9225

CSS Examples

Text

The CSS property to change the color of the text to HunterLab 55.4467, 4.9015, 15.5893 is called "color". The color property can be set on classes, ids or directly on the HTML element.

This example shows how text in the color `rgb(178, 144, 119)` looks like.

```
.text, #text, p{  
    color:rgb(178, 144, 119)  
}
```

If you want to add a text shadow in that color use the text-shadow property, you can generate a text shadow directly with our [CSS Text Shadow Generator](#).

Here you see how black text with a 4 pixel rgb(178, 144, 119) colored shadow looks like.

```
.shadow{ text-shadow: 4px 4px 2px rgb(178, 144, 119) }
```

Border

The CSS property to change the border of an element to HunterLab 55.4467, 4.9015, 15.5893 is called "border". The border property can be set on classes, ids or directly on the HTML element.

This example shows the color as border, it can be applied via the CSS property "border" or "border-color".

```
.border, #border, table{ border:4px solid rgb(178, 144, 119) }
```


If only the border color should be changed use the property `border-color`.

```
.border{ border-color:rgb(178, 144, 119) }
```

If you want to add a box shadow in that color use:

Here you see how a box with a 4 pixel `rgb(178, 144, 119)` colored shadow looks like.

```
.boxshadow{ -moz-box-shadow:4px 4px 4px 4px rgb(178, 144, 119); -webkit-box-shadow:4px 4px 4px 4px rgb(178, 144, 119); box-shadow:4px 4px 4px 4px rgb(178, 144, 119) }
```

Background

The CSS property to change the background color of an element to HunterLab 55.4467, 4.9015, 15.5893 is called "background". The background property can be set on classes, ids or directly on the HTML element.

```
.background, #background, body{  
background: rgb(178, 144, 119) }
```

If only the background color should be changed can be used:

```
.background{ background-color: rgb(178,  
144, 119) }
```

This example shows the color as background, it is applied via the CSS property "background".

To optimize and compress your CSS code, you can use our [online CSS compressor and optimizer](#) based on csstidy. If you want to create a linear or radial gradient as background or border, check our [CSS Gradient Generator](#).

Hey! You found this booklet interesting? Support Converting Colors with the new Membership Option!

The pro membership hides all ads, plus gives you double the colors in the color bucket, and more awesome pro features!

[Learn more, Memberships starting at \\$2.50/m!](#)

**Follow me
on Twitter!**

@ConvertingColor