

Converting Colors

HunterLab(55.6123, 24.9785,
10.7292)

Have a look what the booklet for
HunterLab(55.6123, 24.9785,
10.7292) contains.

HunterLab(55.7641, 25.0044, 10.8190)	3
<i>Conversions</i>	4
<i>Details</i>	6
<i>Harmonies</i>	12
<i>Previews</i>	24
<i>Color Blindness Simulation</i>	28
<i>CSS Examples</i>	31

Color

**HunterLab(55.7641, 25.0044,
10.8190)**

Conversions

Conversions Part 1

Format	Color
Hex	D08286
RGB	208, 130, 134
RGB Percent	82%, 51%, 53%
CMY	0.1843, 0.4902, 0.4745
CMYK	0.00, 0.37, 0.36, 0.18
HSL	357°, 45%, 66%
HSV	357°, 37%, 82%
XYZ	38.2981, 31.0963, 26.5379
YIQ	153.7780, 45.2040, 17.7800

Conversions

Conversions Part 2

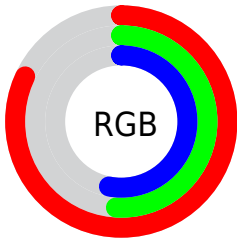
Format	Color
R _Y B	208, 130, 134
Decimal	13664902
CIE Lab	62.59, 30.55, 10.57
CIE LCh	63, 32.331, 19.082
Yxy	31.0979, 0.3992, 0.3242
Android (android.graphics.Color)	4291854982 (0xFFD08286)
YUV	153.7780, -9.7506, 47.5527
Hunter-Lab	55.7641, 25.0044, 10.8190

Details

The HunterLab color **55.7641, 25.0044, 10.8190** is a light color, and the websafe version is hex **CC9999**. A complement of this color would be **73.6328, -25.4358, -1.0746**, and the grayscale version is **56.7821, -3.0298, 3.0851**.

A 20% lighter version of the original color is **76.8953, 21.7757, 11.5139**, and **35.8150, 23.0385, 8.2449** is the 20% darker color. If you saturate the color by 10%, you get **50.6083, 33.3155, 13.0240**, and if you desaturate by 10%, it is **61.4856, 16.8233, 8.8128**.

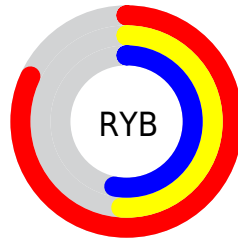
Distribution



Red (82%)

Green (51%)

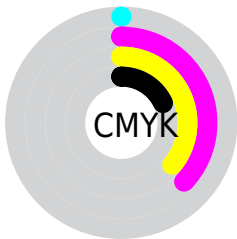
Blue (53%)



Red (82%)

Yellow (51%)

Blue (53%)

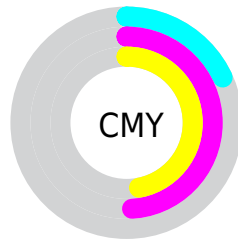


Cyan (0%)

Magenta (37%)

Yellow (36%)

Black (18%)



Cyan (18%)

Magenta (49%)

Yellow (47%)

Brightness & Saturation Gradients

These gradients show how the HunterLab color 55.7641, 25.0044, 10.8190 changes by changing the brightness by 10 percent. The first figure shows a shift by +10% for each color and the second figure -10%.

Similar to the brightness gradients but the following saturation gradients show a change of the HunterLab color 55.7641, 25.0044, 10.8190 by changing the saturation by 10% instead.

■ 55.7641, 25.0044,
10.8190

■ 55.7641, 25.0044,
10.8190

175.2110, 29.7376,
21.4330

■ 45.4680, 24.0458,
9.6629

■ 78.3544, 26.6008,
13.1264

■ 35.8963, 22.9702,
8.4935

■ 90.5730, 27.2634,
14.2845

■ 27.1104, 21.7622,
7.2994

■ 103.3680, 27.8452,
15.4496

■ 19.1879, 20.4122,
6.0597

116.7145, 28.3526,
16.6238

■ 12.2360, 18.9330,
4.7921

130.5905, 28.7911,
17.8083

■ 5.3549, 24.9993,
3.7484

144.9767, 29.1655,

0.0000, NaN, NaN

19.0042

0.0000, NaN, NaN

159.8554, 29.4798,
20.2122

0.0000, NaN, NaN

■ 55.7641, 25.0044,
10.8190

■ 55.7641, 25.0044,
10.8190

■ 50.6083, 33.3155,
13.0240

■ 61.4856, 16.8233,
8.8128

■ 46.1236, 41.4990,
15.3736

■ 67.6759, 8.9046,
7.0120

■ 42.4285, 49.0966,
17.7525

■ 74.2609, 1.2838,
5.4052

■ 39.6281, 55.4775,
19.9702

■ 81.1805, -6.0462,
3.9710

■ 37.7786, 59.9959,
21.7935

■ 88.3873, -13.1132,
2.6860

■ 36.8227, 62.3696,
23.0179

■ 95.8436, -19.9521,
1.5280

■ 36.6514, 62.8304,
23.1890

■ 95.9947, -19.5628,
0.3757

Harmonies

Analogous

The Analogous color harmony consists of three colors that are next to each other on the color wheel.



55.7655, 26.1918, -2.0695



55.7641, 25.0044, 10.8190



55.7655, 15.8973, 19.2084

Triad

The Triadic color harmony groups three colors that are evenly spaced from another and form a triangle on the color wheel.



55.7655, 25.0017, 10.8200



55.7655, -22.0080, 17.4139



55.7655, -8.0174, -28.6593

Complementary

The Complementary color scheme is a pair of colors which are on the opposite of each other on the color wheel.



55.7641, 25.0044, 10.8190



73.6328, -25.4358, -1.0746

Split Complementary

Split-complementary colors differ from the complementary color scheme. The scheme consists of three colors, the original color and two neighbors of the complement color.



55.7655, -19.6359, -20.1595



55.7641, 25.0044, 10.8190



55.7655, -27.1632, 7.6993

Square

The Square scheme is like the rectangle color scheme, but the four colors are evenly spaced on the color wheel.



55.7655, 25.0017, 10.8200



55.7655, -11.5612, 22.3105



55.7655, -26.3402, -6.0634



55.7655, 6.1569, -27.2231

Rectangle

The Rectangle color scheme consists of four colors that form a rectangle on the color wheel.



55.7641, 25.0044, 10.8190



55.7655, 7.0270, 22.1404



55.7655, -26.3402, -6.0634



55.7655, -12.3248, -26.7997

Sweetspot

The Sweet Spot groups the original color and five complimentary colors.



55.7655, 25.0017, 10.8200



90.4399, 5.0582, 7.5141



57.6101, 35.3351, -25.2968



41.3133, 2.9475, 3.6037

0.0000, NaN, NaN



46.2646, -2.4686, 2.5136

Same Dimension

The Same Dimension uses a secret algorithm to generate beautiful new colors.



55.7655, 25.0017, 10.8200



64.9374, 39.8883, 15.8355



64.4222, 7.1869, 20.3841



34.3772, 1.2812, 2.6847



28.9425, 49.6302, 18.1959



6.8695, 11.8308, 3.9220

Inverse Universe

The Inverse Universe completely reimagines the original color for something new.



55.7655, 25.0017, 10.8200



64.9374, 39.8883, 15.8355



62.9688, -8.8050, -17.5412



34.3772, 1.2812, 2.6847



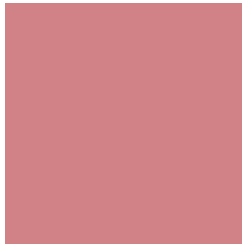
28.9425, 49.6302, 18.1959



6.8695, 11.8308, 3.9220

Previews

White Background



This preview shows how the HunterLab color 55.7641, 25.0044, 10.8190 looks on a white background.

Color Contrast Check

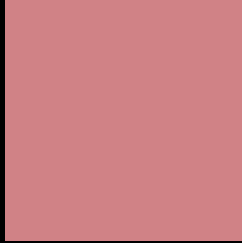
Large Text (above 18pt) WCAG AA × Fail

Any Text WCAG AA × Fail

Large Text (above 18pt) WCAG AAA × Fail

Any Text WCAG AAA × Fail

Black Background



This preview shows how the HunterLab color 55.7641, 25.0044, 10.8190 looks on a black background.

Color Contrast Check

Large Text (above 18pt) WCAG AA ✓ Pass

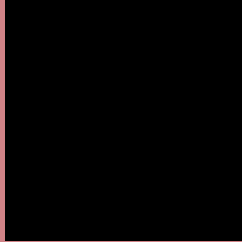
Any Text WCAG AA ✓ Pass

Large Text (above 18pt) WCAG AAA ✓ Pass

Any Text WCAG AAA ✓ Pass

If you want to check with other color combinations, try the [Color Contrast Checker](#).

HunterLab 55.7641, 25.0044, 10.8190 Background



This preview shows how black text looks on a background with the HunterLab color 55.7641, 25.0044, 10.8190.



This preview shows how white text looks on a background with the HunterLab color 55.7641, 25.0044,

Color Blindness Simulation

Color vision deficiency is a very complex topic, and I could not describe the different causes any better than Wikipedia does, so if you want to learn more, you should check out their [article about color blindness](#).

Dichromacy



Original Color

55.7641, 25.0044, 10.8190

Protanopia

55.8976, -2.3793, 5.9884

Deuteranopia

55.8526, 3.9876, 11.6917



Tritanopia

55.6547, 26.1577, 8.7306

Trichromacy



Original Color

55.7641, 25.0044, 10.8190

Protanomaly

55.3913, 7.1831, 7.2847

Deuteranomaly

55.5529, 11.3635, 11.1320

Tritanomaly

55.6027, 25.8995, 9.4791

Monochromacy



Original Color

55.7641, 25.0044, 10.8190

Achromatopsia

56.8457, -3.0331, 3.0885

Achromatomaly

55.9965, 6.7139, 5.3950

CSS Examples

Text

The CSS property to change the color of the text to HunterLab 55.7641, 25.0044, 10.8190 is called "color". The color property can be set on classes, ids or directly on the HTML element.

This example shows how text in the color `rgb(208, 130, 134)` looks like.

```
.text, #text, p{  
    color:rgb(208, 130, 134)  
}
```

If you want to add a text shadow in that color use the text-shadow property, you can generate a text shadow directly with our [CSS Text Shadow Generator](#).

Here you see how black text with a 4 pixel rgb(208, 130, 134) colored shadow looks like.

```
.shadow{ text-shadow: 4px 4px 2px rgb(208, 130, 134) }
```

Border

The CSS property to change the border of an element to HunterLab 55.7641, 25.0044, 10.8190 is called "border". The border property can be set on classes, ids or directly on the HTML element.

This example shows the color as border, it can be applied via the CSS property "border" or "border-color".

```
.border, #border, table{ border:4px solid rgb(208, 130, 134) }
```


If only the border color should be changed use the property `border-color`.

```
.border{ border-color:rgb(208, 130, 134) }
```

If you want to add a box shadow in that color use:

Here you see how a box with a 4 pixel `rgb(208, 130, 134)` colored shadow looks like.

```
.boxshadow{ -moz-box-shadow:4px 4px 4px  
4px rgb(208, 130, 134); -webkit-box-  
shadow:4px 4px 4px 4px rgb(208, 130, 134);  
box-shadow:4px 4px 4px 4px rgb(208, 130,  
134) }
```

Background

The CSS property to change the background color of an element to HunterLab 55.7641, 25.0044, 10.8190 is called "background". The background property can be set on classes, ids or directly on the HTML element.

```
.background, #background, body{  
background: rgb(208, 130, 134) }
```

If only the background color should be changed can be used:

```
.background{ background-color: rgb(208,  
130, 134) }
```

This example shows the color as background, it is applied via the CSS property "background".

To optimize and compress your CSS code, you can use our [online CSS compressor and optimizer](#) based on csstidy. If you want to create a linear or radial gradient as background or border, check our [CSS Gradient Generator](#).

Hey! You found this booklet interesting? Support Converting Colors with the new Membership Option!

The pro membership hides all ads, plus gives you double the colors in the color bucket, and more awesome pro features!

[Learn more, Memberships starting at \\$2.50/m!](#)

**Follow me
on Twitter!**

@ConvertingColor