

Converting Colors

HunterLab(55.6276, 23.8922,
13.0542)

Have a look what the booklet for
HunterLab(55.6276, 23.8922,
13.0542) contains.

HunterLab(55.6180, 24.2765, 12.9262)	3
<i>Conversions</i>	4
<i>Details</i>	6
<i>Harmonies</i>	12
<i>Previews</i>	24
<i>Color Blindness Simulation</i>	28
<i>CSS Examples</i>	31

Color

**HunterLab(55.6180, 24.2765,
12.9262)**

Conversions

Conversions Part 1

Format	Color
Hex	D08280
RGB	208, 130, 128
RGB Percent	82%, 51%, 50%
CMY	0.1843, 0.4902, 0.4980
CMYK	0.00, 0.37, 0.38, 0.18
HSL	2°, 46%, 66%
HSV	2°, 38%, 82%
XYZ	37.8913, 30.9336, 24.3957
YIQ	153.0940, 47.1300, 15.9140

Conversions

Conversions Part 2

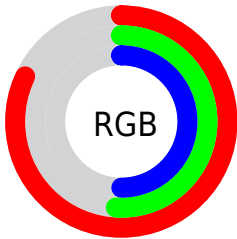
Format	Color
R _Y B	208, 130, 128
Decimal	13664896
CIE Lab	62.45, 29.83, 13.79
CIE LCh	62, 32.867, 24.806
Yxy	30.9351, 0.4065, 0.3318
Android (android.graphics.Color)	4291854976 (0xFFD08280)
YUV	153.0940, -12.3713, 48.1526
Hunter-Lab	55.6180, 24.2765, 12.9262

Details

The HunterLab color **55.6180, 24.2765, 12.9262** is a light color, and the websafe version is hex **CC9999**. A complement of this color would be **72.9957, -24.1633, -3.9134**, and the grayscale version is **56.5143, -3.0155, 3.0705**.

A 20% lighter version of the original color is **76.7315, 20.9326, 13.8689**, and **35.6872, 22.4265, 10.0935** is the 20% darker color. If you saturate the color by 10%, you get **50.5654, 32.3215, 15.3490**, and if you desaturate by 10%, it is **61.2184, 16.4186, 10.5525**.

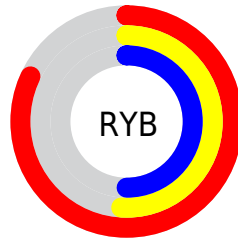
Distribution



Red (82%)

Green (51%)

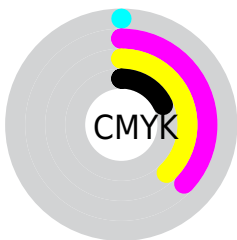
Blue (50%)



Red (82%)

Yellow (51%)

Blue (50%)

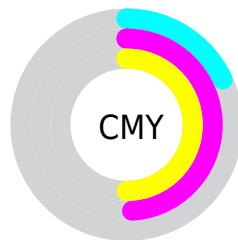


Cyan (0%)

Magenta (37%)

Yellow (38%)

Black (18%)



Cyan (18%)

Magenta (49%)

Yellow (50%)

Brightness & Saturation Gradients

These gradients show how the HunterLab color 55.6180, 24.2765, 12.9262 changes by changing the brightness by 10 percent. The first figure shows a shift by +10% for each color and the second figure -10%.

Similar to the brightness gradients but the following saturation gradients show a change of the HunterLab color 55.6180, 24.2765, 12.9262 by changing the saturation by 10% instead.

■ 55.6180, 24.2765,
12.9262

■ 55.6180, 24.2765,
12.9262

174.9970, 28.7757,
24.8645

■ 45.3315, 23.3473,
11.5731

■ 78.1908, 25.8160,
15.5853

■ 35.7702, 22.3018,
10.1879

■ 90.4012, 26.4513,
16.9031

■ 26.9955, 21.1237,
8.7531

■ 103.1885, 27.0065,
18.2194

■ 19.0856, 19.8027,
7.2386

116.5275, 27.4880,
19.5373

■ 12.1479, 18.3481,
5.8825

130.3965, 27.9013,
20.8592

■ 5.2110, 24.9587,
3.6477

144.7757, 28.2510,

0.0000, NaN, NaN

22.1868

0.0000, NaN, NaN

159.6478, 28.5413,
23.5215

0.0000, NaN, NaN

■ 55.6180, 24.2765,
12.9262

■ 55.6180, 24.2765,
12.9262

■ 50.5654, 32.3215,
15.3490

■ 61.2184, 16.4186,
10.5525

■ 46.1603, 40.3250,
17.7323

■ 67.2741, 8.8626,
8.2666

■ 42.5154, 47.8684,
19.9337

■ 73.7142, 1.6333,
6.0831

■ 39.7307, 54.3631,
21.7587

■ 80.4808, -5.2828,
4.0009

■ 37.8624, 59.1785,
23.0134

■ 87.5282, -11.9175,
2.0114

■ 36.8752, 61.9082,
23.6583

■ 94.8198, -18.3080,
0.1036

■ 36.7737, 62.1853,
23.7484

■ 95.9947, -19.5629,
0.3757

Harmonies

Analogous

The Analogous color harmony consists of three colors that are next to each other on the color wheel.



55.6194, 27.1689, 0.6054



55.6180, 24.2765, 12.9262



55.6194, 13.7924, 20.4508

Triad

The Triadic color harmony groups three colors that are evenly spaced from another and form a triangle on the color wheel.



55.6194, 24.2737, 12.9272



55.6194, -23.7171, 16.0989



55.6194, -5.4399, -29.8555

Complementary

The Complementary color scheme is a pair of colors which are on the opposite of each other on the color wheel.



55.6180, 24.2765, 12.9262



72.9957, -24.1633, -3.9134

Split Complementary

Split-complementary colors differ from the complementary color scheme. The scheme consists of three colors, the original color and two neighbors of the complement color.



55.6194, -17.9571, -22.8902



55.6180, 24.2765, 12.9262



55.6194, -27.8056, 5.3454

Square

The Square scheme is like the rectangle color scheme, but the four colors are evenly spaced on the color wheel.



55.6194, 24.2737, 12.9272



55.6194, -14.0499, 21.9314



55.6194, -25.8080, -9.1110



55.6194, 9.0499, -26.3572

Rectangle

The Rectangle color scheme consists of four colors that form a rectangle on the color wheel.



55.6180, 24.2765, 12.9262



55.6194, 4.4260, 22.8264



55.6194, -25.8080, -9.1110



55.6194, -10.0000, -28.6174

Sweetspot

The Sweet Spot groups the original color and five complimentary colors.



55.6194, 24.2737, 12.9272



89.7798, 5.3591, 8.6561



57.7383, 37.9329, -24.1565



41.0385, 3.0343, 4.1723

0.0000, NaN, NaN



46.2646, -2.4686, 2.5136

Same Dimension

The Same Dimension uses a secret algorithm to generate beautiful new colors.



55.6194, 24.2737, 12.9272



64.8304, 38.7444, 18.7406



65.9308, 4.1762, 22.3340



34.4311, 1.0867, 2.9614



29.0678, 48.9700, 18.7687



6.9965, 11.1665, 4.5067

Inverse Universe

The Inverse Universe completely reimagines the original color for something new.



72.9957, -24.1633, -3.9134



90.6955, -34.1129, -6.5586



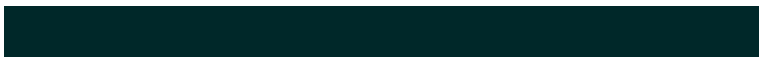
60.5466, -5.5866, -21.2252



36.5433, -4.6909, 0.9484



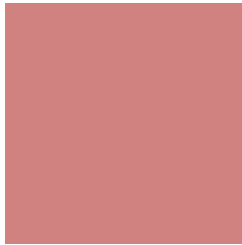
54.2392, -27.8282, -7.7211



12.8893, -6.6569, -1.7401

Previews

White Background



This preview shows how the HunterLab color 55.6180, 24.2765, 12.9262 looks on a white background.

Color Contrast Check

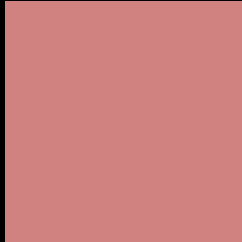
Large Text (above 18pt) WCAG AA × Fail

Any Text WCAG AA × Fail

Large Text (above 18pt) WCAG AAA × Fail

Any Text WCAG AAA × Fail

Black Background



This preview shows how the HunterLab color 55.6180, 24.2765, 12.9262 looks on a black background.

Color Contrast Check

Large Text (above 18pt) WCAG AA ✓ Pass

Any Text WCAG AA ✓ Pass

Large Text (above 18pt) WCAG AAA ✓ Pass

Any Text WCAG AAA ✓ Pass

If you want to check with other color combinations, try the [Color Contrast Checker](#).

HunterLab 55.6180, 24.2765, 12.9262 Background



This preview shows how black text looks on a background with the HunterLab color 55.6180, 24.2765, 12.9262.



This preview shows how white text looks on a background with the HunterLab color 55.6180, 24.2765,

Color Blindness Simulation

Color vision deficiency is a very complex topic, and I could not describe the different causes any better than Wikipedia does, so if you want to learn more, you should check out their [article about color blindness](#).

Dichromacy



Original Color

55.6180, 24.2765, 12.9262

Protanopia

55.8260, -2.9508, 8.4063

Deuteranopia

55.8143, 3.5761, 13.8449



Tritanopia

55.5235, 26.9307, 9.0090

Trichromacy



Original Color

55.6180, 24.2765, 12.9262

Protanomaly

55.3392, 6.6973, 9.6589

Deuteranomaly

55.5224, 10.9778, 13.3267

Tritanomaly

55.6570, 25.9078, 10.7227

Monochromacy



Original Color

55.6180, 24.2765, 12.9262

Achromatopsia

56.4399, -3.0115, 3.0665

Achromatomaly

55.8110, 5.9332, 6.4640

CSS Examples

Text

The CSS property to change the color of the text to HunterLab 55.6180, 24.2765, 12.9262 is called "color". The color property can be set on classes, ids or directly on the HTML element.

This example shows how text in the color `rgb(208, 130, 128)` looks like.

```
.text, #text, p{  
    color:rgb(208, 130, 128)  
}
```

If you want to add a text shadow in that color use the text-shadow property, you can generate a text shadow directly with our [CSS Text Shadow Generator](#).

Here you see how black text with a 4 pixel rgb(208, 130, 128) colored shadow looks like.

```
.shadow{ text-shadow: 4px 4px 2px rgb(208, 130, 128) }
```

Border

The CSS property to change the border of an element to HunterLab 55.6180, 24.2765, 12.9262 is called "border". The border property can be set on classes, ids or directly on the HTML element.

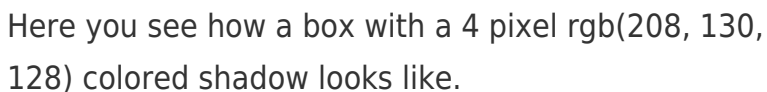
This example shows the color as border, it can be applied via the CSS property "border" or "border-color".

```
.border, #border, table{ border:4px solid rgb(208, 130, 128) }
```


If only the border color should be changed use the property `border-color`.

```
.border{ border-color:rgb(208, 130, 128) }
```

If you want to add a box shadow in that color use:



Here you see how a box with a 4 pixel `rgb(208, 130, 128)` colored shadow looks like.

```
.boxshadow{ -moz-box-shadow:4px 4px 4px 4px rgb(208, 130, 128); -webkit-box-shadow:4px 4px 4px 4px rgb(208, 130, 128); box-shadow:4px 4px 4px 4px rgb(208, 130, 128) }
```

Background

The CSS property to change the background color of an element to HunterLab 55.6180, 24.2765, 12.9262 is called "background". The background property can be set on classes, ids or directly on the HTML element.

```
.background, #background, body{  
background: rgb(208, 130, 128) }
```

If only the background color should be changed can be used:

```
.background{ background-color: rgb(208,  
130, 128) }
```

This example shows the color as background, it is applied via the CSS property "background".

To optimize and compress your CSS code, you can use our [online CSS compressor and optimizer](#) based on csstidy. If you want to create a linear or radial gradient as background or border, check our [CSS Gradient Generator](#).

Hey! You found this booklet interesting? Support Converting Colors with the new Membership Option!

The pro membership hides all ads, plus gives you double the colors in the color bucket, and more awesome pro features!

[Learn more, Memberships starting at \\$2.50/m!](#)

**Follow me
on Twitter!**

@ConvertingColor