

Converting Colors

HunterLab(55.6816, 3.9880,
18.0579)

Have a look what the booklet for
HunterLab(55.6816, 3.9880,
18.0579) contains.

HunterLab(55.6816, 3.9880, 18.0579)	3
<i>Conversions</i>	4
<i>Details</i>	6
<i>Harmonies</i>	12
<i>Previews</i>	24
<i>Color Blindness Simulation</i>	28
<i>CSS Examples</i>	31

Color

**HunterLab(55.6816, 3.9880,
18.0579)**

Conversions

Conversions Part 1

Format	Color
Hex	B39170
RGB	179, 145, 112
RGB Percent	70%, 57%, 44%
CMY	0.2980, 0.4314, 0.5608
CMYK	0.00, 0.19, 0.37, 0.30
HSL	30°, 31%, 57%
HSV	30°, 37%, 70%
XYZ	31.6405, 31.0044, 19.6461
YIQ	151.4040, 30.8570, -3.0550

Conversions

Conversions Part 2

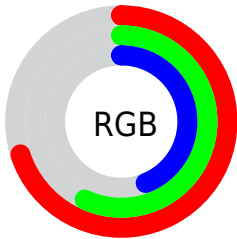
Format	Color
RYB	179, 177, 112
Decimal	11768176
CIELab	62.51, 8.11, 22.35
CIELCh	63, 23.778, 70.046
Yxy	31.0059, 0.3845, 0.3768
Android (android.graphics.Color)	4289958256 (0xFFB39170)
YUV	151.4040, -19.4262, 24.2017
Hunter-Lab	55.6816, 3.9880, 18.0579

Details

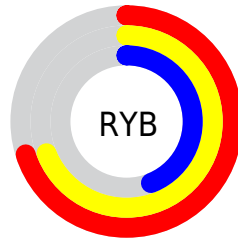
The HunterLab color $55.6816, 3.9880, 18.0579$ is a light color, and the websafe version is hex $CC9966$. A complement of this color would be $52.2076, -5.5543, -16.3607$, and the grayscale version is $55.8618, -2.9806, 3.0351$.

A 20% lighter version of the original color is $78.3327, 3.5535, 21.7466$, and $35.9368, 4.0419, 14.2123$ is the 20% darker color. If you saturate the color by 10%, you get $52.8962, 6.6718, 20.8148$, and if you desaturate by 10%, it is $58.5942, 1.5948, 14.7986$.

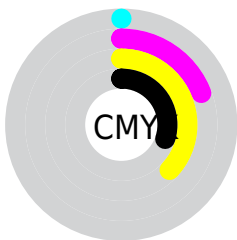
Distribution



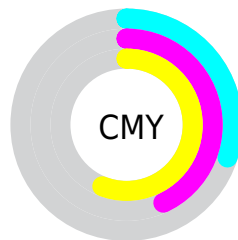
- Red (70%)
- Green (57%)
- Blue (44%)



- Red (70%)
- Yellow (69%)
- Blue (44%)



- Cyan (0%)
- Magenta (19%)
- Yellow (37%)
- Black (30%)



- Cyan (30%)
- Magenta (43%)
- Yellow (56%)

Brightness & Saturation Gradients

These gradients show how the HunterLab color 55.6816, 3.9880, 18.0579 changes by changing the brightness by 10 percent. The first figure shows a shift by +10% for each color and the second figure -10%.

Similar to the brightness gradients but the following saturation gradients show a change of the HunterLab color 55.6816, 3.9880, 18.0579 by changing the saturation by 10% instead.

■ 55.6816, 3.9880,
18.0579

■ 55.6816, 3.9880,
18.0579

175.0901, 0.7158,
33.6614

■ 45.3909, 4.0998,
16.1553

■ 78.2619, 3.5785,
21.6957

■ 35.8251, 4.1440,
14.1675

■ 90.4759, 3.2962,
23.4567

■ 27.0455, 4.1073,
12.0617

■ 103.2666, 2.9670,
25.1917

■ 19.1301, 3.9742,
9.7854

■ 116.6088, 2.5941,
26.9072

■ 12.1862, 3.7207,
8.5303

130.4809, 2.1804,
28.6083

■ 5.2741, 6.4226,
3.6918

144.8631, 1.7281,

0.0000, NaN, NaN

30.2990

0.0000, NaN, NaN

159.7381, 1.2393,
31.9825

0.0000, NaN, NaN

■ 55.6816, 3.9880,
18.0579

■ 55.6816, 3.9880,
18.0579

■ 52.8962, 6.6718,
20.8148

■ 58.5942, 1.5948,
14.7986

■ 50.2451, 9.6629,
23.0182

■ 61.6200, -0.5167,
11.0826

■ 47.7410, 12.9614,
24.6233

■ 64.7512, -2.3665,
6.9556

■ 45.3956, 16.5570,
25.5935

■ 67.9793, -3.9734,
2.4587

■ 43.2202, 20.4216,
25.9132

■ 71.2969, -5.3566,
-2.3711

■ 41.2218, 24.4907,
25.6394

■ 74.6972, -6.5343,
-7.5012

■ 40.7332, 25.5392,
25.5467

■ 78.1743, -7.5238,
-12.9027

■ 81.7148, -8.3853,
-18.4393

■ 84.6191, -12.9930,
-14.3743

Harmonies

Analogous

The Analogous color harmony consists of three colors that are next to each other on the color wheel.



55.6829, 13.1048, 13.8934



55.6816, 3.9880, 18.0579



55.6829, -6.4054, 18.6433

Triad

The Triadic color harmony groups three colors that are evenly spaced from another and form a triangle on the color wheel.



55.6829, 3.9859, 18.0586



55.6829, -21.2568, -0.3757



55.6829, 10.4262, -13.5078

Complementary

The Complementary color scheme is a pair of colors which are on the opposite of each other on the color wheel.



55.6816, 3.9880, 18.0579



52.2076, -5.5543, -16.3607

Split Complementary

Split-complementary colors differ from the complementary color scheme. The scheme consists of three colors, the original color and two neighbors of the complement color.



55.6829, 0.5424, -19.0338



55.6816, 3.9880, 18.0579



55.6829, -17.4130, -10.5864

Square

The Square scheme is like the rectangle color scheme, but the four colors are evenly spaced on the color wheel.



55.6829, 3.9859, 18.0586



55.6829, -20.4830, 9.1158



55.6829, -9.6081, -17.8766



55.6829, 17.0072, -3.8288

Rectangle

The Rectangle color scheme consists of four colors that form a rectangle on the color wheel.



55.6816, 3.9880, 18.0579



55.6829, -12.5980, 17.0615



55.6829, -9.6081, -17.8766



55.6829, 7.3513, -15.9862

Sweetspot

The Sweet Spot groups the original color and five complimentary colors.



55.6829, 3.9859, 18.0586



85.0648, -2.2766, 11.4440



48.2359, 25.2027, -3.5726



39.7753, -0.9172, 5.7358



95.4677, -5.0939, 5.1869



42.2927, -2.2566, 2.2978

Same Dimension

The Same Dimension uses a secret algorithm to generate beautiful new colors.



55.6829, 3.9859, 18.0586



71.3998, 8.3005, 27.2898



65.2289, -11.7709, 26.0537



30.2877, -0.9613, 3.6660



34.4302, 21.0277, 21.5839



6.9989, 1.8231, 4.3446

Inverse Universe

The Inverse Universe completely reimagines the original color for something new.



52.2076, -5.5543, -16.3607



65.7872, -6.9653, -28.4219



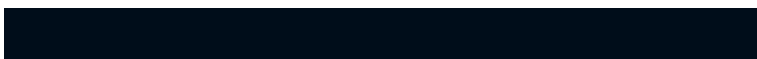
43.0536, 10.6328, -32.0158



29.8649, -2.1383, -0.5075



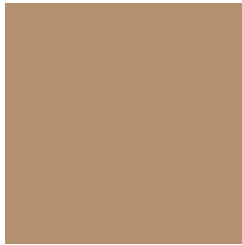
27.7429, 5.8061, -47.2099



5.9887, -0.8216, -5.7119

Previews

White Background



This preview shows how the HunterLab color 55.6816, 3.9880, 18.0579 looks on a white background.

Color Contrast Check

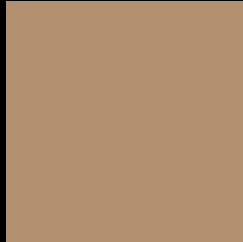
Large Text (above 18pt) WCAG AA × Fail

Any Text WCAG AA × Fail

Large Text (above 18pt) WCAG AAA × Fail

Any Text WCAG AAA × Fail

Black Background



This preview shows how the HunterLab color 55.6816, 3.9880, 18.0579 looks on a black background.

Color Contrast Check

Large Text (above 18pt) WCAG AA ✓ Pass

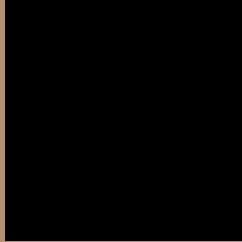
Any Text WCAG AA ✓ Pass

Large Text (above 18pt) WCAG AAA ✓ Pass

Any Text WCAG AAA ✓ Pass

If you want to check with other color combinations, try the [Color Contrast Checker](#).

HunterLab 55.6816, 3.9880, 18.0579 Background



This preview shows how black text looks on a background with the HunterLab color 55.6816, 3.9880, 18.0579.



This preview shows how white text looks on a background with the HunterLab color 55.6816, 3.9880,

Color Blindness Simulation

Color vision deficiency is a very complex topic, and I could not describe the different causes any better than Wikipedia does, so if you want to learn more, you should check out their [article about color blindness](#).

Dichromacy



Original Color

55.6816, 3.9880, 18.0579

Protanopia

55.7247, -4.4273, 17.0024

Deuteranopia

55.6816, 3.9880, 18.0579



Tritanopia

55.7295, 12.9515, 3.4183

Trichromacy



Original Color

55.6816, 3.9880, 18.0579

Protanomaly

55.7087, -1.5795, 17.3568

Deuteranomaly

55.6816, 3.9880, 18.0579

Tritanomaly

55.7649, 9.5781, 9.3668

Monochromacy



Original Color

55.6816, 3.9880, 18.0579

Achromatopsia

55.6299, -2.9683, 3.0225

Achromatomaly

55.5681, -1.0019, 8.9711

CSS Examples

Text

The CSS property to change the color of the text to HunterLab 55.6816, 3.9880, 18.0579 is called "color". The color property can be set on classes, ids or directly on the HTML element.

This example shows how text in the color `rgb(179, 145, 112)` looks like.

```
.text, #text, p{  
    color:rgb(179, 145, 112)  
}
```

If you want to add a text shadow in that color use the text-shadow property, you can generate a text shadow directly with our [CSS Text Shadow Generator](#).

Here you see how black text with a 4 pixel rgb(179, 145, 112) colored shadow looks like.

```
.shadow{ text-shadow: 4px 4px 2px rgb(179, 145, 112) }
```

Border

The CSS property to change the border of an element to HunterLab 55.6816, 3.9880, 18.0579 is called "border". The border property can be set on classes, ids or directly on the HTML element.

This example shows the color as border, it can be applied via the CSS property "border" or "border-color".

```
.border, #border, table{ border:4px solid rgb(179, 145, 112) }
```


If only the border color should be changed use the property `border-color`.

```
.border{ border-color:rgb(179, 145, 112) }
```

If you want to add a box shadow in that color use:

Here you see how a box with a 4 pixel `rgb(179, 145, 112)` colored shadow looks like.

```
.boxshadow{ -moz-box-shadow:4px 4px 4px  
4px rgb(179, 145, 112); -webkit-box-  
shadow:4px 4px 4px 4px rgb(179, 145, 112);  
box-shadow:4px 4px 4px 4px rgb(179, 145,  
112) }
```

Background

The CSS property to change the background color of an element to HunterLab 55.6816, 3.9880, 18.0579 is called "background". The background property can be set on classes, ids or directly on the HTML element.

```
.background, #background, body{  
background: rgb(179, 145, 112) }
```

If only the background color should be changed can be used:

```
.background{ background-color: rgb(179,  
145, 112) }
```

This example shows the color as background, it is applied via the CSS property "background".

To optimize and compress your CSS code, you can use our [online CSS compressor and optimizer](#) based on csstidy. If you want to create a linear or radial gradient as background or border, check our [CSS Gradient Generator](#).

Hey! You found this booklet interesting? Support Converting Colors with the new Membership Option!

The pro membership hides all ads, plus gives you double the colors in the color bucket, and more awesome pro features!

[Learn more, Memberships starting at \\$2.50/m!](#)

**Follow me
on Twitter!**

@ConvertingColor