

Converting Colors

HunterLab(55.8203, 9.0949,
6.0249)

Have a look what the booklet for
HunterLab(55.8203, 9.0949, 6.0249)
contains.

HunterLab(55.9222, 9.1415, 6.2178)	3
<i>Conversions</i>	4
<i>Details</i>	6
<i>Harmonies</i>	12
<i>Previews</i>	24
<i>Color Blindness Simulation</i>	28
<i>CSS Examples</i>	31

Color

**HunterLab(55.9222, 9.1415,
6.2178)**

Conversions

Conversions Part 1

Format	Color
Hex	B38F91
RGB	179, 143, 145
RGB Percent	70%, 56%, 57%
CMY	0.2980, 0.4392, 0.4314
CMYK	0.00, 0.20, 0.19, 0.30
HSL	357°, 19%, 63%
HSV	357°, 20%, 70%
XYZ	33.5237, 31.2729, 31.0574
YIQ	153.9920, 20.8140, 8.2540

Conversions

Conversions Part 2

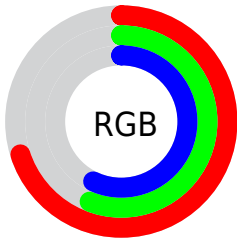
Format	Color
R_{YB}	179, 143, 145
Decimal	11767697
CIE Lab	62.74, 13.88, 4.10
CIE LCh	63, 14.477, 16.460
Yxy	31.2743, 0.3497, 0.3263
Android (android.graphics.Color)	4289957777 (0xFFB38F91)
YUV	153.9920, -4.4331, 21.9320
Hunter-Lab	55.9222, 9.1415, 6.2178

Details

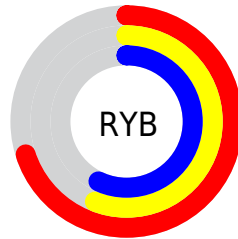
The HunterLab color **55.9222, 9.1415, 6.2178** is a light color, and the websafe version is hex **CC9999**. A complement of this color would be **64.2300, -14.0653, 0.9342**, and the grayscale version is **56.8549, -3.0336, 3.0890**.

A 20% lighter version of the original color is **78.5609, 9.1520, 7.7905**, and **36.1809, 8.6348, 4.7042** is the 20% darker color. If you saturate the color by 10%, you get **50.8315, 15.8304, 7.7412**, and if you desaturate by 10%, it is **61.3559, 2.6904, 4.8642**.

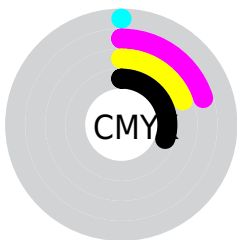
Distribution



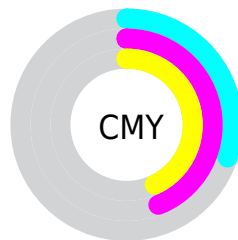
- Red (70%)
- Green (56%)
- Blue (57%)



- Red (70%)
- Yellow (56%)
- Blue (57%)



- Cyan (0%)
- Magenta (20%)
- Yellow (19%)
- Black (30%)



- Cyan (30%)
- Magenta (44%)
- Yellow (43%)

Brightness & Saturation Gradients

These gradients show how the HunterLab color 55.9222, 9.1415, 6.2178 changes by changing the brightness by 10 percent. The first figure shows a shift by +10% for each color and the second figure -10%.

Similar to the brightness gradients but the following saturation gradients show a change of the HunterLab color 55.9222, 9.1415, 6.2178 by changing the saturation by 10% instead.

■ 55.9222, 9.1415,
6.2178

■ 55.9222, 9.1415,
6.2178

175.4424, 8.0022,
14.2733

■ 45.6156, 8.9606,
5.4361

■ 78.5314, 9.2744,
7.8518

■ 36.0328, 8.6938,
4.6750

■ 90.7587, 9.2451,
8.7025

■ 27.2347, 8.3249,
3.9335

103.5620, 9.1586,
9.5759

■ 19.2987, 7.8343,
3.2078

116.9165, 9.0195,
10.4718

■ 12.3313, 7.1937,
2.4892

130.8003, 8.8314,
11.3898

■ 5.5061, 10.6932,
3.3878

145.1939, 8.5974,

0.0000, NaN, NaN

12.3296

0.0000, NaN, NaN

160.0798, 8.3202,
13.2909

0.0000, NaN, NaN

■ 55.9222, 9.1415,
6.2178

■ 55.9222, 9.1415,
6.2178

■ 50.8315, 15.8304,
7.7412

■ 61.3559, 2.6904,
4.8642

■ 46.1450, 22.7181,
9.4399

■ 67.0767, -3.5158,
3.6603

■ 41.9433, 29.6783,
11.3026

■ 73.0446, -9.4986,
2.5872

■ 38.3183, 36.4621,
13.2792

■ 79.2268, -15.2854,
1.6260

■ 35.3657, 42.6623,
15.2637

■ 85.5971, -20.9050,
0.7596

■ 33.1666, 47.7446,
17.0908

■ 92.1346, -26.3844,
-0.0266

■ 31.7559, 51.2030,
18.5676

■ 93.9807, -26.9541,
-2.2470

■ 30.9928, 53.1463,
19.4826

Harmonies

Analogous

The Analogous color harmony consists of three colors that are next to each other on the color wheel.



55.9235, 9.3132, 0.2719



55.9222, 9.1415, 6.2178



55.9235, 5.6249, 10.7859

Triad

The Triadic color harmony groups three colors that are evenly spaced from another and form a triangle on the color wheel.



55.9235, 9.1396, 6.2187



55.9235, -11.5188, 10.4300



55.9235, -5.8012, -9.3890

Complementary

The Complementary color scheme is a pair of colors which are on the opposite of each other on the color wheel.



55.9222, 9.1415, 6.2178



64.2300, -14.0653, 0.9342

Split Complementary

Split-complementary colors differ from the complementary color scheme. The scheme consists of three colors, the original color and two neighbors of the complement color.



55.9235, -11.1072, -5.9921



55.9222, 9.1415, 6.2178



55.9235, -14.3081, 5.6812

Square

The Square scheme is like the rectangle color scheme, but the four colors are evenly spaced on the color wheel.



55.9235, 9.1396, 6.2187



55.9235, -6.3857, 13.0263



55.9235, -14.1608, -0.3284



55.9235, 0.4950, -9.2037

Rectangle

The Rectangle color scheme consists of four colors that form a rectangle on the color wheel.



55.9222, 9.1415, 6.2178



55.9235, 1.9452, 12.6312



55.9235, -14.1608, -0.3284



55.9235, -7.7539, -8.6134

Sweetspot

The Sweet Spot groups the original color and five complimentary colors.



55.9235, 9.1396, 6.2187



85.1364, 0.2335, 5.8411



56.7461, 13.9371, -9.3493



39.8433, 0.3617, 2.7987



95.4677, -5.0939, 5.1869



42.2927, -2.2566, 2.2978

Same Dimension

The Same Dimension uses a secret algorithm to generate beautiful new colors.



55.9235, 9.1396, 6.2187



71.8528, 16.0399, 9.1690



60.1888, 1.0739, 11.5066



29.1765, 1.0345, 2.2491



26.0594, 44.6988, 16.2858



4.6496, 8.0292, 2.4877

Inverse Universe

The Inverse Universe completely reimagines the original color for something new.



55.9235, 9.1396, 6.2187



71.8528, 16.0399, 9.1690



59.5249, -6.3079, -5.9112



29.1765, 1.0345, 2.2491



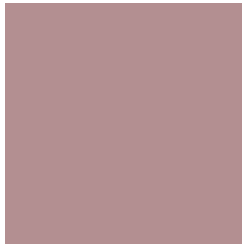
26.0594, 44.6988, 16.2858



4.6496, 8.0292, 2.4877

Previews

White Background



This preview shows how the HunterLab color 55.9222, 9.1415, 6.2178 looks on a white background.

Color Contrast Check

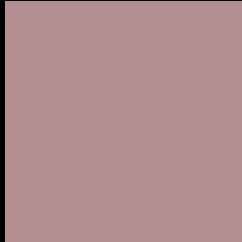
Large Text (above 18pt) WCAG AA × Fail

Any Text WCAG AA × Fail

Large Text (above 18pt) WCAG AAA × Fail

Any Text WCAG AAA × Fail

Black Background



This preview shows how the HunterLab color 55.9222, 9.1415, 6.2178 looks on a black background.

Color Contrast Check

Large Text (above 18pt) WCAG AA ✓ Pass

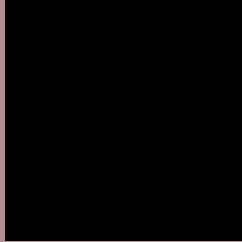
Any Text WCAG AA ✓ Pass

Large Text (above 18pt) WCAG AAA ✓ Pass

Any Text WCAG AAA ✓ Pass

If you want to check with other color combinations, try the [Color Contrast Checker](#).

HunterLab 55.9222, 9.1415, 6.2178 Background



This preview shows how black text looks on a background with the HunterLab color 55.9222, 9.1415, 6.2178.



This preview shows how white text looks on a background with the HunterLab color 55.9222, 9.1415,

Color Blindness Simulation

Color vision deficiency is a very complex topic, and I could not describe the different causes any better than Wikipedia does, so if you want to learn more, you should check out their [article about color blindness](#).

Dichromacy



Original Color

55.9222, 9.1415, 6.2178

Protanopia

55.9498, -1.9167, 3.8657

Deuteranopia

55.9608, 3.5978, 6.5904



Tritanopia

55.9904, 11.1921, 2.7839

Trichromacy



Original Color

55.9222, 9.1415, 6.2178

Protanomaly

55.8663, 2.0659, 4.7268

Deuteranomaly

56.0853, 5.4349, 6.7614

Tritanomaly

55.9029, 10.7346, 4.0326

Monochromacy



Original Color

55.9222, 9.1415, 6.2178

Achromatopsia

56.8457, -3.0331, 3.0885

Achromatomaly

56.4213, 1.2247, 4.0212

CSS Examples

Text

The CSS property to change the color of the text to HunterLab 55.9222, 9.1415, 6.2178 is called "color". The color property can be set on classes, ids or directly on the HTML element.

This example shows how text in the color `rgb(179, 143, 145)` looks like.

```
.text, #text, p{  
    color:rgb(179, 143, 145)  
}
```

If you want to add a text shadow in that color use the text-shadow property, you can generate a text shadow directly with our [CSS Text Shadow Generator](#).

Here you see how black text with a 4 pixel rgb(179, 143, 145) colored shadow looks like.

```
.shadow{ text-shadow: 4px 4px 2px rgb(179, 143, 145) }
```

Border

The CSS property to change the border of an element to HunterLab 55.9222, 9.1415, 6.2178 is called "border".

The border property can be set on classes, ids or directly on the HTML element.

This example shows the color as border, it can be applied via the CSS property "border" or "border-color".

```
.border, #border, table{ border:4px solid rgb(179, 143, 145) }
```


If only the border color should be changed use the property `border-color`.

```
.border{ border-color:rgb(179, 143, 145) }
```

If you want to add a box shadow in that color use:

Here you see how a box with a 4 pixel `rgb(179, 143, 145)` colored shadow looks like.

```
.boxshadow{ -moz-box-shadow:4px 4px 4px  
4px rgb(179, 143, 145); -webkit-box-  
shadow:4px 4px 4px 4px rgb(179, 143, 145);  
box-shadow:4px 4px 4px 4px rgb(179, 143,  
145) }
```

Background

The CSS property to change the background color of an element to HunterLab 55.9222, 9.1415, 6.2178 is called "background". The background property can be set on classes, ids or directly on the HTML element.

```
.background, #background, body{  
background: rgb(179, 143, 145) }
```

If only the background color should be changed can be used:

```
.background{ background-color: rgb(179,  
143, 145) }
```

This example shows the color as background, it is applied via the CSS property "background".

To optimize and compress your CSS code, you can use our [online CSS compressor and optimizer](#) based on csstidy. If you want to create a linear or radial gradient as background or border, check our [CSS Gradient Generator](#).

Hey! You found this booklet interesting? Support Converting Colors with the new Membership Option!

The pro membership hides all ads, plus gives you double the colors in the color bucket, and more awesome pro features!

[Learn more, Memberships starting at \\$2.50/m!](#)

**Follow me
on Twitter!**

@ConvertingColor