

Converting Colors

HunterLab(55.8558, 2.9427,
6.6248)

Have a look what the booklet for
HunterLab(55.8558, 2.9427, 6.6248)
contains.

HunterLab(55.7643, 2.9363, 6.3593)	3
<i>Conversions</i>	4
<i>Details</i>	6
<i>Harmonies</i>	12
<i>Previews</i>	24
<i>Color Blindness Simulation</i>	28
<i>CSS Examples</i>	31

Color

**HunterLab(55.7643, 2.9363,
6.3593)**

Conversions

Conversions Part 1

Format	Color
Hex	A79390
RGB	167, 147, 144
RGB Percent	65%, 58%, 56%
CMY	0.3451, 0.4235, 0.4353
CMYK	0.00, 0.12, 0.14, 0.35
HSL	8°, 12%, 61%
HSV	8°, 14%, 65%
XYZ	31.4041, 31.0966, 30.7326
YIQ	152.6380, 12.8830, 3.3070

Conversions

Conversions Part 2

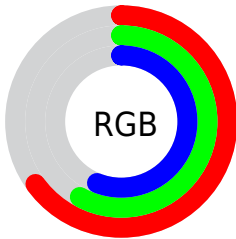
Format	Color
RYB	167, 147, 144
Decimal	10982288
CIELab	62.59, 6.92, 4.31
CIElCh	63, 8.147, 31.914
Yxy	31.0980, 0.3368, 0.3335
Android (android.graphics.Color)	4289172368 (0xFFA79390)
YUV	152.6380, -4.2585, 12.5955
Hunter-Lab	55.7643, 2.9363, 6.3593

Details

The HunterLab color **55.7643, 2.9363, 6.3593** is a light color, and the websafe version is hex **999999**. A complement of this color would be **59.3882, -8.4940, -0.0531**, and the grayscale version is **56.3073, -3.0044, 3.0593**.

A 20% lighter version of the original color is **78.3455, 2.3406, 7.8855**, and **35.8033, 3.5203, 4.5870** is the 20% darker color. If you saturate the color by 10%, you get **51.3712, 7.7539, 8.4978**, and if you desaturate by 10%, it is **60.3750, -1.6465, 4.1972**.

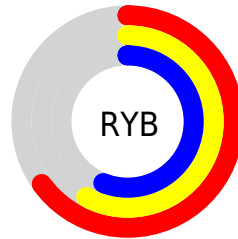
Distribution



Red (65%)

Green (58%)

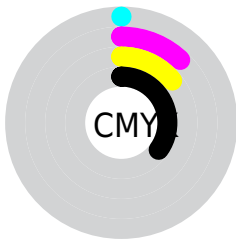
Blue (56%)



Red (65%)

Yellow (58%)

Blue (56%)

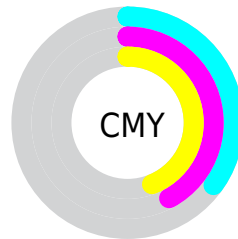


Cyan (0%)

Magenta (12%)

Yellow (14%)

Black (35%)



Cyan (35%)

Magenta (42%)

Yellow (44%)

Brightness & Saturation Gradients

These gradients show how the HunterLab color 55.7643, 2.9363, 6.3593 changes by changing the brightness by 10 percent. The first figure shows a shift by +10% for each color and the second figure -10%.

Similar to the brightness gradients but the following saturation gradients show a change of the HunterLab color 55.7643, 2.9363, 6.3593 by changing the saturation by 10% instead.

■ 55.7643, 2.9363,
6.3593

■ 55.7643, 2.9363,
6.3593

175.2111, -0.7910,
14.4907

■ 45.4681, 3.1120,
5.5664

■ 78.3545, 2.4107,
8.0132

■ 35.8964, 3.2237,
4.7933

■ 90.5731, 2.0742,
8.8730

■ 27.1104, 3.2600,
4.0384

103.3681, 1.6931,
9.7551

■ 19.1880, 3.2064,
3.2975

116.7146, 1.2704,
10.6592

■ 12.2360, 3.0409,
2.5608

130.5906, 0.8086,
11.5852

■ 5.3550, 5.3410,
3.6252

144.9768, 0.3099,

0.0000, NaN, NaN

12.5326

0.0000, NaN, NaN

159.8555, -0.2238,
13.5012

0.0000, NaN, NaN

■ 55.7643, 2.9363,
6.3593

■ 55.7643, 2.9363,
6.3593

■ 51.3712, 7.7539,
8.4978

■ 60.3750, -1.6465,
4.1972

■ 47.2262, 12.8219,
10.5887

■ 65.1718, -6.0107,
2.0212

■ 43.3720, 18.1277,
12.5986

■ 70.1330, -10.1828,
-0.1611

■ 39.8581, 23.6201,
14.4743

■ 75.2402, -14.1877,
-2.3464

■ 36.7412, 29.1838,
16.1395

■ 80.4780, -18.0485,
-4.5334

■ 34.0819, 34.6154,
17.4959

■ 85.8338, -21.7860,
-6.7221

■ 31.9376, 39.6144,
18.4370

■ 91.0853, -26.6268,
-5.9226

■ 30.3486, 43.8166,
18.8842

■ 93.2500, -29.6780,
-3.2127

■ 29.6344, 45.8378,
19.0630

Harmonies

Analogous

The Analogous color harmony consists of three colors that are next to each other on the color wheel.



55.7655, 4.0088, 3.2520



55.7643, 2.9363, 6.3593



55.7655, 0.2716, 8.4656

Triad

The Triadic color harmony groups three colors that are evenly spaced from another and form a triangle on the color wheel.



55.7655, 2.9346, 6.3602



55.7655, -8.8737, 6.0067



55.7655, -2.7503, -3.8519

Complementary

The Complementary color scheme is a pair of colors which are on the opposite of each other on the color wheel.



55.7643, 2.9363, 6.3593



59.3882, -8.4940, -0.0531

Split Complementary

Split-complementary colors differ from the complementary color scheme. The scheme consists of three colors, the original color and two neighbors of the complement color.



55.7655, -6.1558, -3.0024



55.7643, 2.9363, 6.3593



55.7655, -9.6379, 2.8181

Square

The Square scheme is like the rectangle color scheme, but the four colors are evenly spaced on the color wheel.



55.7655, 2.9346, 6.3602



55.7655, -6.5413, 8.2707



55.7655, -8.6551, -0.5075



55.7655, 0.6761, -2.7623

Rectangle

The Rectangle color scheme consists of four colors that form a rectangle on the color wheel.



55.7643, 2.9363, 6.3593



55.7655, -2.0152, 9.0891



55.7655, -8.6551, -0.5075



55.7655, -3.9353, -3.7835

Sweetspot

The Sweet Spot groups the original color and five complimentary colors.



55.7655, 2.9346, 6.3602



80.6080, -2.0237, 5.7042



55.5466, 7.6810, -3.2875



37.9142, -0.7493, 2.7991



92.0917, -4.9138, 5.0035



39.3538, -2.0998, 2.1382

Same Dimension

The Same Dimension uses a secret algorithm to generate beautiful new colors.



55.7655, 2.9346, 6.3602



72.5141, 6.1699, 9.5280



58.9456, -2.5304, 9.7375



27.7388, 0.4096, 2.5880



26.0056, 39.8279, 16.7218



4.5910, 4.6254, 2.9099

Inverse Universe

The Inverse Universe completely reimagines the original color for something new.



59.3882, -8.4940, -0.0531



78.5778, -12.9808, -1.2116



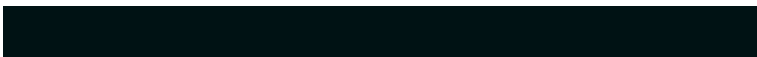
56.0734, -3.1433, -4.1597



28.9179, -3.3069, 0.5012



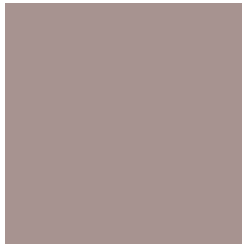
42.1039, -18.0018, -13.7655



6.8997, -3.2289, -1.6538

Previews

White Background



This preview shows how the HunterLab color 55.7643, 2.9363, 6.3593 looks on a white background.

Color Contrast Check

Large Text (above 18pt) WCAG AA × Fail

Any Text WCAG AA × Fail

Large Text (above 18pt) WCAG AAA × Fail

Any Text WCAG AAA × Fail

Black Background



This preview shows how the HunterLab color 55.7643, 2.9363, 6.3593 looks on a black background.

Color Contrast Check

Large Text (above 18pt) WCAG AA ✓ Pass

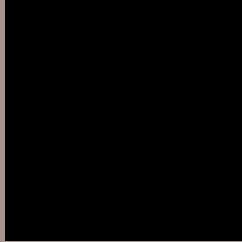
Any Text WCAG AA ✓ Pass

Large Text (above 18pt) WCAG AAA ✓ Pass

Any Text WCAG AAA ✓ Pass

If you want to check with other color combinations, try the [Color Contrast Checker](#).

HunterLab 55.7643, 2.9363, 6.3593 Background



This preview shows how black text looks on a background with the HunterLab color 55.7643, 2.9363, 6.3593.



This preview shows how white text looks on a background with the HunterLab color 55.7643, 2.9363,

Color Blindness Simulation

Color vision deficiency is a very complex topic, and I could not describe the different causes any better than Wikipedia does, so if you want to learn more, you should check out their [article about color blindness](#).

Dichromacy



Original Color

55.7643, 2.9363, 6.3593

Protanopia

55.8365, -2.5361, 5.4857

Deuteranopia

55.6834, 4.0926, 6.2889



Tritanopia

55.7549, 6.4406, 1.0220

Trichromacy



Original Color

55.7643, 2.9363, 6.3593

Protanomaly

55.8820, -0.9595, 5.9957

Deuteranomaly

55.5844, 3.7604, 6.1721

Tritanomaly

55.8118, 4.9765, 2.9211

Monochromacy



Original Color

55.7643, 2.9363, 6.3593

Achromatopsia

56.4399, -3.0115, 3.0665

Achromatomaly

56.2177, -0.9921, 4.1927

CSS Examples

Text

The CSS property to change the color of the text to HunterLab 55.7643, 2.9363, 6.3593 is called "color". The color property can be set on classes, ids or directly on the HTML element.

This example shows how text in the color `rgb(167, 147, 144)` looks like.

```
.text, #text, p{  
    color:rgb(167, 147, 144)  
}
```

If you want to add a text shadow in that color use the text-shadow property, you can generate a text shadow directly with our [CSS Text Shadow Generator](#).

Here you see how black text with a 4 pixel rgb(167, 147, 144) colored shadow looks like.

```
.shadow{ text-shadow: 4px 4px 2px rgb(167, 147, 144) }
```

Border

The CSS property to change the border of an element to HunterLab 55.7643, 2.9363, 6.3593 is called "border".

The border property can be set on classes, ids or directly on the HTML element.

This example shows the color as border, it can be applied via the CSS property "border" or "border-color".

```
.border, #border, table{ border:4px solid rgb(167, 147, 144) }
```


If only the border color should be changed use the property `border-color`.

```
.border{ border-color:rgb(167, 147, 144) }
```

If you want to add a box shadow in that color use:

Here you see how a box with a 4 pixel `rgb(167, 147, 144)` colored shadow looks like.

```
.boxshadow{ -moz-box-shadow:4px 4px 4px  
4px rgb(167, 147, 144); -webkit-box-  
shadow:4px 4px 4px 4px rgb(167, 147, 144);  
box-shadow:4px 4px 4px 4px rgb(167, 147,  
144) }
```

Background

The CSS property to change the background color of an element to HunterLab 55.7643, 2.9363, 6.3593 is called "background". The background property can be set on classes, ids or directly on the HTML element.

```
.background, #background, body{  
background: rgb(167, 147, 144) }
```

If only the background color should be changed can be used:

```
.background{ background-color: rgb(167,  
147, 144) }
```

This example shows the color as background, it is applied via the CSS property "background".

To optimize and compress your CSS code, you can use our [online CSS compressor and optimizer](#) based on csstidy. If you want to create a linear or radial gradient as background or border, check our [CSS Gradient Generator](#).

Hey! You found this booklet interesting? Support Converting Colors with the new Membership Option!

The pro membership hides all ads, plus gives you double the colors in the color bucket, and more awesome pro features!

[Learn more, Memberships starting at \\$2.50/m!](#)

**Follow me
on Twitter!**

@ConvertingColor