

Converting Colors

HunterLab(55.8933, 1.8339,
15.0788)

Have a look what the booklet for
HunterLab(55.8933, 1.8339,
15.0788) contains.

HunterLab(55.8183, 2.0283, 14.8729)	3
<i>Conversions</i>	4
<i>Details</i>	6
<i>Harmonies</i>	12
<i>Previews</i>	24
<i>Color Blindness Simulation</i>	28
<i>CSS Examples</i>	31

Color

**HunterLab(55.8183, 2.0283,
14.8729)**

Conversions

Conversions Part 1

Format	Color
Hex	AD937A
RGB	173, 147, 122
RGB Percent	68%, 58%, 48%
CMY	0.3216, 0.4235, 0.5216
CMYK	0.00, 0.15, 0.29, 0.32
HSL	29°, 24%, 58%
HSV	29°, 29%, 68%
XYZ	31.1802, 31.1568, 22.7829
YIQ	151.9240, 23.5210, -2.2630

Conversions

Conversions Part 2

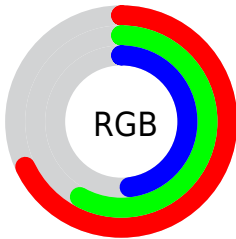
Format	Color
RYB	173, 171, 122
Decimal	11375482
CIELab	62.64, 5.87, 16.85
CIElCh	63, 17.845, 70.788
Yxy	31.1583, 0.3663, 0.3660
Android (android.graphics.Color)	4289565562 (0xFFAD937A)
YUV	151.9240, -14.7525, 18.4837
Hunter-Lab	55.8183, 2.0283, 14.8729

Details

The HunterLab color $55.8183, 2.0283, 14.8729$ is a dark color, and the websafe version is hex $CC9999$. A complement of this color would be $53.2295, -5.4313, -11.3320$, and the grayscale version is $56.0561, -2.9910, 3.0456$.

A 20% lighter version of the original color is $78.4138, 1.2704, 18.0622$, and $35.8327, 2.7055, 11.6976$ is the 20% darker color. If you saturate the color by 10%, you get $53.0363, 4.3968, 17.9070$, and if you desaturate by 10%, it is $58.7151, -0.0731, 11.3967$.

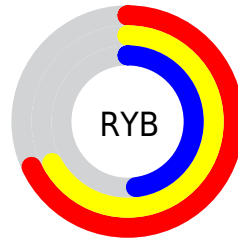
Distribution



Red (68%)

Green (58%)

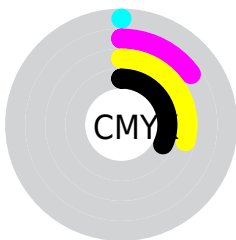
Blue (48%)



Red (68%)

Yellow (67%)

Blue (48%)

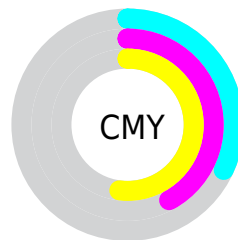


Cyan (0%)

Magenta (15%)

Yellow (29%)

Black (32%)



Cyan (32%)

Magenta (42%)

Yellow (52%)

Brightness & Saturation Gradients

These gradients show how the HunterLab color 55.8183, 2.0283, 14.8729 changes by changing the brightness by 10 percent. The first figure shows a shift by +10% for each color and the second figure -10%.

Similar to the brightness gradients but the following saturation gradients show a change of the HunterLab color 55.8183, 2.0283, 14.8729 by changing the saturation by 10% instead.

■ 55.8183, 2.0283,
14.8729

■ 55.8183, 2.0283,
14.8729

175.2903, -2.0964,
28.0987

■ 45.5186, 2.2591,
13.3278

■ 78.4150, 1.4007,
17.8744

■ 35.9431, 2.4300,
11.7324

■ 90.6366, 1.0170,
19.3476

■ 27.1529, 2.5301,
10.0638

■ 103.4345, 0.5906,
20.8110

■ 19.2259, 2.5464,
8.2833

116.7837, 0.1245,
22.2687

■ 12.2686, 2.4586,
6.9179

130.6624, -0.3792,
23.7240

■ 5.4072, 4.4436,
3.7850

145.0511, -0.9183,

0.0000, NaN, NaN

25.1795

0.0000, NaN, NaN

159.9323, -1.4912,
26.6372

0.0000, NaN, NaN

■ 55.8183, 2.0283,
14.8729

■ 55.8183, 2.0283,
14.8729

■ 53.0363, 4.3968,
17.9070

■ 58.7151, -0.0731,
11.3967

■ 50.3751, 7.0522,
20.4504

■ 61.7139, -1.9184,
7.5199

■ 47.8468, 10.0010,
22.4571

■ 64.8075, -3.5275,
3.2832

■ 45.4626, 13.2432,
23.8843

■ 67.9887, -4.9188,
-1.2771

■ 43.2339, 16.7661,
24.6995

■ 71.2508, -6.1099,
-6.1292

■ 41.1713, 20.5382,
24.8925

■ 74.5879, -7.1177,
-11.2449

■ 39.2769, 24.4711,
24.5916

■ 77.9946, -7.9578,
-16.5993

■ 39.1821, 24.6750,
24.5758

■ 81.2495, -9.8456,
-19.1447

■ 84.0824, -14.2904,
-15.1509

Harmonies

Analogous

The Analogous color harmony consists of three colors that are next to each other on the color wheel.



55.8196, 8.8007, 11.5570



55.8183, 2.0283, 14.8729



55.8196, -5.7534, 15.2862

Triad

The Triadic color harmony groups three colors that are evenly spaced from another and form a triangle on the color wheel.



55.8196, 2.0264, 14.8737



55.8196, -16.9275, 0.3091



55.8196, 7.1294, -8.8436

Complementary

The Complementary color scheme is a pair of colors which are on the opposite of each other on the color wheel.



55.8183, 2.0283, 14.8729



53.2295, -5.4313, -11.3320

Split Complementary

Split-complementary colors differ from the complementary color scheme. The scheme consists of three colors, the original color and two neighbors of the complement color.



55.8196, -0.1542, -12.8235



55.8183, 2.0283, 14.8729



55.8196, -13.8606, -7.0785

Square

The Square scheme is like the rectangle color scheme, but the four colors are evenly spaced on the color wheel.



55.8196, 2.0264, 14.8737



55.8196, -16.4151, 7.5207



55.8196, -7.8186, -12.1366



55.8196, 11.8566, -1.8494

Rectangle

The Rectangle color scheme consists of four colors that form a rectangle on the color wheel.



55.8183, 2.0283, 14.8729



55.8196, -10.4329, 13.9317



55.8196, -7.8186, -12.1366



55.8196, 4.8828, -10.6189

Sweetspot

The Sweet Spot groups the original color and five complimentary colors.



55.8196, 2.0264, 14.8737



82.7208, -2.6414, 9.8884



49.9529, 18.2342, -2.3269



38.2943, -1.0786, 4.9667



93.2148, -4.9737, 5.0645



40.3295, -2.1519, 2.1912

Same Dimension

The Same Dimension uses a secret algorithm to generate beautiful new colors.



55.8196, 2.0264, 14.8737



72.3984, 4.6130, 22.4687



63.1282, -10.0170, 21.4306



29.3927, -0.9271, 3.5448



33.7527, 20.7540, 21.1616



6.5325, 1.5418, 4.0523

Inverse Universe

The Inverse Universe completely reimagines the original color for something new.



53.2295, -5.4313, -11.3320



68.2459, -7.2898, -19.5887



46.1345, 6.8370, -22.2615



28.9945, -2.0823, -0.4773



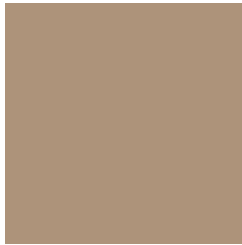
27.3513, 5.4774, -46.0109



5.6334, -0.9230, -5.0487

Previews

White Background



This preview shows how the HunterLab color 55.8183, 2.0283, 14.8729 looks on a white background.

Color Contrast Check

Large Text (above 18pt) WCAG AA × Fail

Any Text WCAG AA × Fail

Large Text (above 18pt) WCAG AAA × Fail

Any Text WCAG AAA × Fail

Black Background



This preview shows how the HunterLab color 55.8183, 2.0283, 14.8729 looks on a black background.

Color Contrast Check

Large Text (above 18pt) WCAG AA ✓ Pass

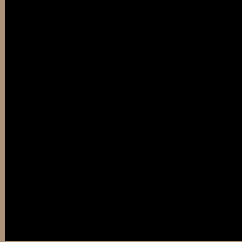
Any Text WCAG AA ✓ Pass

Large Text (above 18pt) WCAG AAA ✓ Pass

Any Text WCAG AAA ✓ Pass

If you want to check with other color combinations, try the [Color Contrast Checker](#).

HunterLab 55.8183, 2.0283, 14.8729 Background



This preview shows how black text looks on a background with the HunterLab color 55.8183, 2.0283, 14.8729.



This preview shows how white text looks on a background with the HunterLab color 55.8183, 2.0283,

Color Blindness Simulation

Color vision deficiency is a very complex topic, and I could not describe the different causes any better than Wikipedia does, so if you want to learn more, you should check out their [article about color blindness](#).

Dichromacy



Original Color

55.8183, 2.0283, 14.8729

Protanopia

55.8261, -3.6828, 14.0833

Deuteranopia

55.8507, 3.5631, 14.9311



Tritanopia

55.9689, 9.8094, 2.2735

Trichromacy



Original Color

55.8183, 2.0283, 14.8729

Protanomaly

55.8946, -2.0149, 14.5295

Deuteranomaly

55.7466, 3.2129, 14.8244

Tritanomaly

55.7939, 7.1696, 7.3107

Monochromacy



Original Color

55.8183, 2.0283, 14.8729

Achromatopsia

56.0347, -2.9899, 3.0445

Achromatomaly

55.8653, -1.2338, 7.6583

CSS Examples

Text

The CSS property to change the color of the text to HunterLab 55.8183, 2.0283, 14.8729 is called "color". The color property can be set on classes, ids or directly on the HTML element.

This example shows how text in the color `rgb(173, 147, 122)` looks like.

```
.text, #text, p{  
    color:rgb(173, 147, 122)  
}
```

If you want to add a text shadow in that color use the text-shadow property, you can generate a text shadow directly with our [CSS Text Shadow Generator](#).

Here you see how black text with a 4 pixel rgb(173, 147, 122) colored shadow looks like.

```
.shadow{ text-shadow: 4px 4px 2px rgb(173, 147, 122) }
```

Border

The CSS property to change the border of an element to HunterLab 55.8183, 2.0283, 14.8729 is called "border". The border property can be set on classes, ids or directly on the HTML element.

This example shows the color as border, it can be applied via the CSS property "border" or "border-color".

```
.border, #border, table{ border:4px solid rgb(173, 147, 122) }
```


If only the border color should be changed use the property `border-color`.

```
.border{ border-color:rgb(173, 147, 122) }
```

If you want to add a box shadow in that color use:

Here you see how a box with a 4 pixel `rgb(173, 147, 122)` colored shadow looks like.

```
.boxshadow{ -moz-box-shadow:4px 4px 4px  
4px rgb(173, 147, 122); -webkit-box-  
shadow:4px 4px 4px 4px rgb(173, 147, 122);  
box-shadow:4px 4px 4px 4px rgb(173, 147,  
122) }
```

Background

The CSS property to change the background color of an element to HunterLab 55.8183, 2.0283, 14.8729 is called "background". The background property can be set on classes, ids or directly on the HTML element.

```
.background, #background, body{  
background: rgb(173, 147, 122) }
```

If only the background color should be changed can be used:

```
.background{ background-color: rgb(173,  
147, 122) }
```

This example shows the color as background, it is applied via the CSS property "background".

To optimize and compress your CSS code, you can use our [online CSS compressor and optimizer](#) based on csstidy. If you want to create a linear or radial gradient as background or border, check our [CSS Gradient Generator](#).

Hey! You found this booklet interesting? Support Converting Colors with the new Membership Option!

The pro membership hides all ads, plus gives you double the colors in the color bucket, and more awesome pro features!

[Learn more, Memberships starting at \\$2.50/m!](#)

**Follow me
on Twitter!**

@ConvertingColor