

Converting Colors

HunterLab(56.0414, 5.3923,
19.5208)

Have a look what the booklet for
HunterLab(56.0414, 5.3923,
19.5208) contains.

HunterLab(56.1461, 5.3843, 19.7095)	3
<i>Conversions</i>	4
<i>Details</i>	6
<i>Harmonies</i>	12
<i>Previews</i>	24
<i>Color Blindness Simulation</i>	28
<i>CSS Examples</i>	31

Color

**HunterLab(56.1461, 5.3843,
19.7095)**

Conversions

Conversions Part 1

Format	Color
Hex	B8916C
RGB	184, 145, 108
RGB Percent	72%, 57%, 42%
CMY	0.2784, 0.4314, 0.5765
CMYK	0.00, 0.21, 0.41, 0.28
HSL	29°, 35%, 57%
HSV	29°, 41%, 72%
XYZ	32.5993, 31.5238, 18.5538
YIQ	152.4430, 35.1210, -3.2390

Conversions

Conversions Part 2

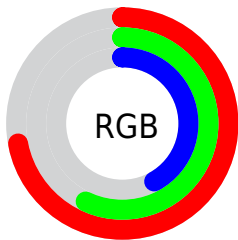
Format	Color
RYB	184, 180, 108
Decimal	12095852
CIELab	62.95, 9.70, 25.24
CIELCh	63, 27.037, 68.974
Yxy	31.5253, 0.3943, 0.3813
Android (android.graphics.Color)	4290285932 (0xFFB8916C)
YUV	152.4430, -21.9104, 27.6755
Hunter-Lab	56.1461, 5.3843, 19.7095

Details

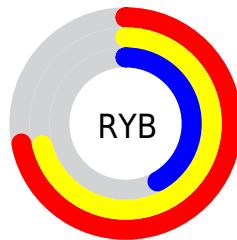
The HunterLab color **56.1461, 5.3843, 19.7095** is a dark color, and the websafe version is hex **CC9966**. A complement of this color would be **52.4549, -5.8065, -19.0354**, and the grayscale version is **56.2911, -3.0036, 3.0584**.

A 20% lighter version of the original color is **78.7945, 4.9292, 23.6139**, and **36.3012, 5.1221, 15.4761** is the 20% darker color. If you saturate the color by 10%, you get **53.2986, 8.3328, 22.3268**, and if you desaturate by 10%, it is **59.1318, 2.7415, 16.5569**.

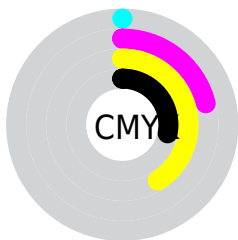
Distribution



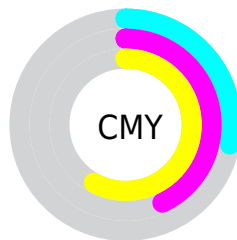
- Red (72%)
- Green (57%)
- Blue (42%)



- Red (72%)
- Yellow (71%)
- Blue (42%)



- Cyan (0%)
- Magenta (21%)
- Yellow (41%)
- Black (28%)



- Cyan (28%)
- Magenta (43%)
- Yellow (58%)

Brightness & Saturation Gradients

These gradients show how the HunterLab color 56.1461, 5.3843, 19.7095 changes by changing the brightness by 10 percent. The first figure shows a shift by +10% for each color and the second figure -10%.

Similar to the brightness gradients but the following saturation gradients show a change of the HunterLab color 56.1461, 5.3843, 19.7095 by changing the saturation by 10% instead.

■ 56.1461, 5.3843,
19.7095

■ 56.1461, 5.3843,
19.7095

175.7701, 2.6886,
36.5789

■ 45.8249, 5.4167,
17.6184

■ 78.7821, 5.1213,
23.6846

■ 36.2263, 5.3767,
15.4252

■ 91.0218, 4.9074,
25.5987

■ 27.4109, 5.2500,
13.0929

■ 103.8370, 4.6438,
27.4785

■ 19.4559, 5.0198,
10.5646

■ 117.2028, 4.3342,
29.3314

■ 12.4668, 4.6606,
8.7268

131.0975, 3.9814,
31.1637

■ 5.7134, 7.0933,
3.9994

145.5016, 3.5882,

0.0000, NaN, NaN

32.9799

0.0000, NaN, NaN

160.3977, 3.1566,
34.7839

0.0000, NaN, NaN

■ 56.1461, 5.3843,
19.7095

■ 56.1461, 5.3843,
19.7095

■ 53.2986, 8.3328,
22.3268

■ 59.1318, 2.7415,
16.5569

■ 50.5974, 11.6014,
24.3559

■ 62.2407, 0.3971,
12.9178

■ 48.0563, 15.1852,
25.7519

■ 65.4637, -1.6690,
8.8410

■ 45.6878, 19.0660,
26.4829

■ 68.7918, -3.4765,
4.3711

■ 43.5036, 23.2035,
26.5448

■ 72.2165, -5.0452,
-0.4521

■ 41.7535, 26.9204,
26.1996

■ 75.7304, -6.3946,
-5.5931

■ 79.3269, -7.5433,
-11.0207

■ 82.9923, -8.5518,
-16.5984

■ 86.0173, -13.3477,
-12.4414

Harmonies

Analogous

The Analogous color harmony consists of three colors that are next to each other on the color wheel.



56.1474, 15.7657, 15.0148



56.1461, 5.3843, 19.7095



56.1474, -6.4969, 20.4788

Triad

The Triadic color harmony groups three colors that are evenly spaced from another and form a triangle on the color wheel.



56.1474, 5.3820, 19.7102



56.1474, -23.7123, -0.4183



56.1474, 12.0075, -16.4619

Complementary

The Complementary color scheme is a pair of colors which are on the opposite of each other on the color wheel.



56.1461, 5.3843, 19.7095



52.4549, -5.8065, -19.0354

Split Complementary

Split-complementary colors differ from the complementary color scheme. The scheme consists of three colors, the original color and two neighbors of the complement color.



56.1474, 0.5869, -22.7378



56.1461, 5.3843, 19.7095



56.1474, -19.5829, -12.2966

Square

The Square scheme is like the rectangle color scheme, but the four colors are evenly spaced on the color wheel.



56.1474, 5.3820, 19.7102



56.1474, -22.6596, 10.2666



56.1474, -10.9154, -21.0735



56.1474, 19.8052, -5.2587

Rectangle

The Rectangle color scheme consists of four colors that form a rectangle on the color wheel.



56.1461, 5.3843, 19.7095



56.1474, -13.5798, 18.8586



56.1474, -10.9154, -21.0735



56.1474, 8.4286, -19.3130

Sweetspot

The Sweet Spot groups the original color and five complimentary colors.



56.1474, 5.3820, 19.7102



87.7447, -2.0122, 12.4184



47.9903, 29.1541, -4.1575



40.4778, -0.7754, 6.1056



96.5975, -5.1542, 5.2483



43.2801, -2.3093, 2.3515

Same Dimension

The Same Dimension uses a secret algorithm to generate beautiful new colors.



56.1474, 5.3820, 19.7102



71.9358, 11.0242, 29.9132



67.1045, -12.7540, 28.5907



31.1683, -0.9639, 3.7675



34.8652, 21.8728, 21.8667



7.4332, 2.1862, 4.6186

Inverse Universe

The Inverse Universe completely reimagines the original color for something new.



52.4549, -5.8065, -19.0354



65.9122, -7.0129, -33.4535



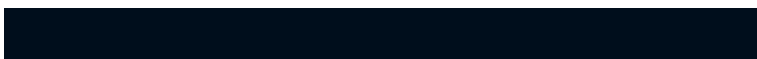
42.0041, 12.9017, -37.9006



30.7587, -2.2261, -0.5146



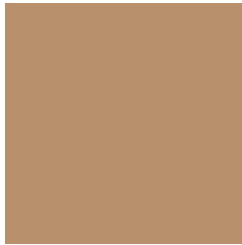
28.4518, 5.5294, -47.4987



6.3939, -0.7882, -6.2903

Previews

White Background



This preview shows how the HunterLab color 56.1461, 5.3843, 19.7095 looks on a white background.

Color Contrast Check

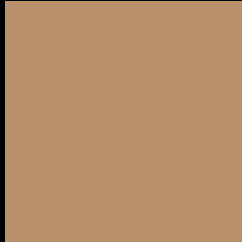
Large Text (above 18pt) WCAG AA × Fail

Any Text WCAG AA × Fail

Large Text (above 18pt) WCAG AAA × Fail

Any Text WCAG AAA × Fail

Black Background



This preview shows how the HunterLab color 56.1461, 5.3843, 19.7095 looks on a black background.

Color Contrast Check

Large Text (above 18pt) WCAG AA ✓ Pass

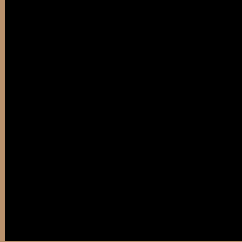
Any Text WCAG AA ✓ Pass

Large Text (above 18pt) WCAG AAA ✓ Pass

Any Text WCAG AAA ✓ Pass

If you want to check with other color combinations, try the [Color Contrast Checker](#).

HunterLab 56.1461, 5.3843, 19.7095 Background



This preview shows how black text looks on a background with the HunterLab color 56.1461, 5.3843, 19.7095.



This preview shows how white text looks on a background with the HunterLab color 56.1461, 5.3843,

Color Blindness Simulation

Color vision deficiency is a very complex topic, and I could not describe the different causes any better than Wikipedia does, so if you want to learn more, you should check out their [article about color blindness](#).

Dichromacy



Original Color

56.1461, 5.3843, 19.7095

Protanopia

56.1219, -4.6811, 18.6122

Deuteranopia

56.0930, 3.8009, 19.6348



Tritanopia

55.9988, 15.0866, 4.2203

Trichromacy



Original Color

56.1461, 5.3843, 19.7095

Protanomaly

55.9273, -0.9856, 18.8060

Deuteranomaly

56.2010, 4.1633, 19.7366

Tritanomaly

56.0034, 11.6105, 10.4455

Monochromacy



Original Color

56.1461, 5.3843, 19.7095

Achromatopsia

56.0347, -2.9899, 3.0445

Achromatomaly

55.8256, -0.1684, 9.6585

CSS Examples

Text

The CSS property to change the color of the text to HunterLab 56.1461, 5.3843, 19.7095 is called "color". The color property can be set on classes, ids or directly on the HTML element.

This example shows how text in the color `rgb(184, 145, 108)` looks like.

```
.text, #text, p{  
    color:rgb(184, 145, 108)  
}
```

If you want to add a text shadow in that color use the text-shadow property, you can generate a text shadow directly with our [CSS Text Shadow Generator](#).

Here you see how black text with a 4 pixel rgb(184, 145, 108) colored shadow looks like.

```
.shadow{ text-shadow: 4px 4px 2px rgb(184, 145, 108) }
```

Border

The CSS property to change the border of an element to HunterLab 56.1461, 5.3843, 19.7095 is called "border". The border property can be set on classes, ids or directly on the HTML element.

This example shows the color as border, it can be applied via the CSS property "border" or "border-color".

```
.border, #border, table{ border:4px solid rgb(184, 145, 108) }
```


If only the border color should be changed use the property `border-color`.

```
.border{ border-color:rgb(184, 145, 108) }
```

If you want to add a box shadow in that color use:

Here you see how a box with a 4 pixel `rgb(184, 145, 108)` colored shadow looks like.

```
.boxshadow{ -moz-box-shadow:4px 4px 4px 4px rgb(184, 145, 108); -webkit-box-shadow:4px 4px 4px 4px rgb(184, 145, 108); box-shadow:4px 4px 4px 4px rgb(184, 145, 108) }
```

Background

The CSS property to change the background color of an element to HunterLab 56.1461, 5.3843, 19.7095 is called "background". The background property can be set on classes, ids or directly on the HTML element.

```
.background, #background, body{  
background: rgb(184, 145, 108) }
```

If only the background color should be changed can be used:

```
.background{ background-color: rgb(184,  
145, 108) }
```

This example shows the color as background, it is applied via the CSS property "background".

To optimize and compress your CSS code, you can use our [online CSS compressor and optimizer](#) based on csstidy. If you want to create a linear or radial gradient as background or border, check our [CSS Gradient Generator](#).

Hey! You found this booklet interesting? Support Converting Colors with the new Membership Option!

The pro membership hides all ads, plus gives you double the colors in the color bucket, and more awesome pro features!

[Learn more, Memberships starting at \\$2.50/m!](#)

**Follow me
on Twitter!**

@ConvertingColor