

Converting Colors

HunterLab(56.1077, 6.5899,
9.9951)

Have a look what the booklet for
HunterLab(56.1077, 6.5899, 9.9951)
contains.

HunterLab(56.1189, 6.5320, 10.0859)	3
<i>Conversions</i>	4
<i>Details</i>	6
<i>Harmonies</i>	12
<i>Previews</i>	24
<i>Color Blindness Simulation</i>	28
<i>CSS Examples</i>	31

Color

**HunterLab(56.1189, 6.5320,
10.0859)**

Conversions

Conversions Part 1

Format	Color
Hex	B29188
RGB	178, 145, 136
RGB Percent	70%, 57%, 53%
CMY	0.3020, 0.4314, 0.4667
CMYK	0.00, 0.19, 0.24, 0.30
HSL	13°, 21%, 62%
HSV	13°, 24%, 70%
XYZ	32.9294, 31.4933, 27.6357
YIQ	153.8410, 22.5570, 4.1970

Conversions

Conversions Part 2

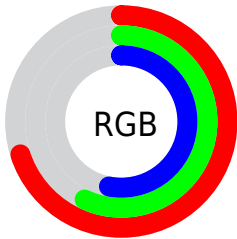
Format	Color
RYB	178, 147, 136
Decimal	11702664
CIELab	62.92, 10.99, 9.44
CIELCh	63, 14.489, 40.679
Yxy	31.4948, 0.3577, 0.3421
Android (android.graphics.Color)	4289892744 (0xFFB29188)
YUV	153.8410, -8.7956, 21.1874
Hunter-Lab	56.1189, 6.5320, 10.0859

Details

The HunterLab color $56.1189, 6.5320, 10.0859$ is a light color, and the websafe version is hex $CC9999$. A complement of this color would be $60.6823, -10.9562, -3.9529$, and the grayscale version is $56.8103, -3.0313, 3.0866$.

A 20% lighter version of the original color is $78.7486, 6.2175, 12.3855$, and $36.3542, 6.2467, 8.1521$ is the 20% darker color. If you saturate the color by 10%, you get $51.9767, 11.2473, 12.6021$, and if you desaturate by 10%, it is $60.4846, 2.0836, 7.4239$.

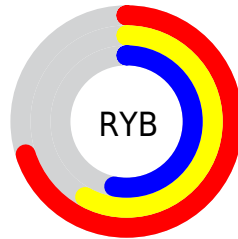
Distribution



Red (70%)

Green (57%)

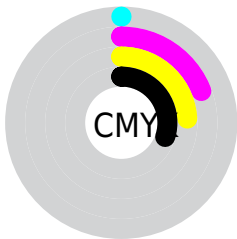
Blue (53%)



Red (70%)

Yellow (58%)

Blue (53%)

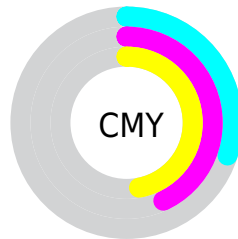


Cyan (0%)

Magenta (19%)

Yellow (24%)

Black (30%)



Cyan (30%)

Magenta (43%)

Yellow (47%)

Brightness & Saturation Gradients

These gradients show how the HunterLab color 56.1189, 6.5320, 10.0859 changes by changing the brightness by 10 percent. The first figure shows a shift by +10% for each color and the second figure -10%.

Similar to the brightness gradients but the following saturation gradients show a change of the HunterLab color 56.1189, 6.5320, 10.0859 by changing the saturation by 10% instead.

■ 56.1189, 6.5320,
10.0859

■ 56.1189, 6.5320,
10.0859

175.7302, 4.3168,
20.2475

■ 45.7994, 6.4986,
8.9969

■ 78.7516, 6.3916,
12.2730

■ 36.2027, 6.3882,
7.9014

■ 90.9898, 6.2347,
13.3766

■ 27.3895, 6.1863,
6.7899

■ 103.8036, 6.0257,
14.4901

■ 19.4368, 5.8748,
5.6450

117.1680, 5.7687,
15.6152

■ 12.4503, 5.4271,
4.4413

131.0614, 5.4667,
16.7528

■ 5.6886, 8.1131,
3.9820

145.4642, 5.1225,

0.0000, NaN, NaN

17.9037

0.0000, NaN, NaN

160.3591, 4.7385,
19.0684

0.0000, NaN, NaN

■ 56.1189, 6.5320,
10.0859

■ 56.1189, 6.5320,
10.0859

■ 51.9767, 11.2473,
12.6021

■ 60.4846, 2.0836,
7.4239

■ 48.0873, 16.2397,
14.9243

■ 65.0423, -2.1099,
4.6467

■ 44.4907, 21.4866,
16.9927

■ 69.7703, -6.0742,
1.7793

■ 41.2315, 26.9257,
18.7301

■ 74.6497, -9.8346,
-1.1611

■ 38.3585, 32.4338,
20.0471

■ 79.6645, -13.4158,
-4.1623

■ 35.9205, 37.8099,
20.8557

■ 84.8014, -16.8405,
-7.2154

■ 33.9593, 42.7748,
21.1002

■ 89.8459, -21.2798,
-7.4424

■ 32.9566, 45.5501,
21.1051

■ 93.9175, -27.1888,
-2.3302

Harmonies

Analogous

The Analogous color harmony consists of three colors that are next to each other on the color wheel.



56.1202, 9.4650, 5.1572



56.1189, 6.5320, 10.0859



56.1202, 1.0848, 12.9153

Triad

The Triadic color harmony groups three colors that are evenly spaced from another and form a triangle on the color wheel.



56.1202, 6.5300, 10.0868



56.1202, -14.0228, 6.7506



56.1202, -0.7253, -9.5493

Complementary

The Complementary color scheme is a pair of colors which are on the opposite of each other on the color wheel.



56.1189, 6.5320, 10.0859



60.6823, -10.9562, -3.9529

Split Complementary

Split-complementary colors differ from the complementary color scheme. The scheme consists of three colors, the original color and two neighbors of the complement color.



56.1202, -6.9662, -9.0005



56.1189, 6.5320, 10.0859



56.1202, -14.4592, 0.8677

Square

The Square scheme is like the rectangle color scheme, but the four colors are evenly spaced on the color wheel.



56.1202, 6.5300, 10.0868



56.1202, -10.7092, 11.1418



56.1202, -11.9289, -5.0243



56.1202, 5.1546, -6.4497

Rectangle

The Rectangle color scheme consists of four colors that form a rectangle on the color wheel.



56.1189, 6.5320, 10.0859



56.1202, -3.1415, 13.4386



56.1202, -11.9289, -5.0243



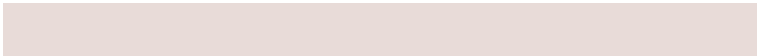
56.1202, -2.8533, -9.7932

Sweetspot

The Sweet Spot groups the original color and five complimentary colors.



56.1202, 6.5300, 10.0868



85.3966, -0.8871, 7.5914



54.7364, 16.3351, -6.9653



40.0249, -0.2625, 3.6771



95.4677, -5.0939, 5.1869



42.2927, -2.2566, 2.2978

Same Dimension

The Same Dimension uses a secret algorithm to generate beautiful new colors.



56.1202, 6.5300, 10.0868



72.8056, 11.8531, 15.2676



61.8851, -3.5045, 15.7558



29.6493, 0.1246, 2.9691



28.0158, 38.1021, 17.9303



5.7598, 4.5689, 3.6291

Inverse Universe

The Inverse Universe completely reimagines the original color for something new.



60.6823, -10.9562, -3.9529



80.1615, -16.4129, -7.3862



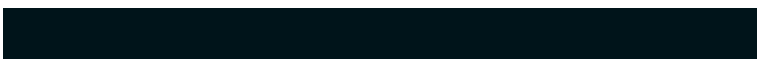
54.6054, -1.1735, -12.1061



30.5224, -3.2078, 0.2855



39.7257, -13.3964, -20.7347



7.5754, -3.0856, -2.8077

Previews

White Background



This preview shows how the HunterLab color 56.1189, 6.5320, 10.0859 looks on a white background.

Color Contrast Check

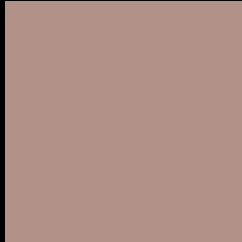
Large Text (above 18pt) WCAG AA × Fail

Any Text WCAG AA × Fail

Large Text (above 18pt) WCAG AAA × Fail

Any Text WCAG AAA × Fail

Black Background



This preview shows how the HunterLab color 56.1189, 6.5320, 10.0859 looks on a black background.

Color Contrast Check

Large Text (above 18pt) WCAG AA ✓ Pass

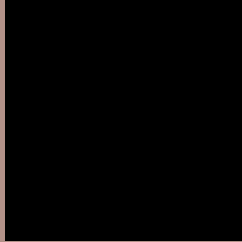
Any Text WCAG AA ✓ Pass

Large Text (above 18pt) WCAG AAA ✓ Pass

Any Text WCAG AAA ✓ Pass

If you want to check with other color combinations, try the [Color Contrast Checker](#).

HunterLab 56.1189, 6.5320, 10.0859 Background



This preview shows how black text looks on a background with the HunterLab color 56.1189, 6.5320, 10.0859.



This preview shows how white text looks on a background with the HunterLab color 56.1189, 6.5320,

Color Blindness Simulation

Color vision deficiency is a very complex topic, and I could not describe the different causes any better than Wikipedia does, so if you want to learn more, you should check out their [article about color blindness](#).

Dichromacy



Original Color

56.1189, 6.5320, 10.0859

Protanopia

56.2308, -2.9733, 8.4363

Deuteranopia

56.1509, 3.8154, 10.0720



Tritanopia

55.9904, 11.1921, 2.7839

Trichromacy



Original Color

56.1189, 6.5320, 10.0859

Protanomaly

55.9985, 0.5778, 8.6543

Deuteranomaly

56.0797, 4.9952, 10.0175

Tritanomaly

55.9779, 9.4340, 5.4214

Monochromacy



Original Color

56.1189, 6.5320, 10.0859

Achromatopsia

56.8457, -3.0331, 3.0885

Achromatomaly

56.5918, 0.1229, 5.9539

CSS Examples

Text

The CSS property to change the color of the text to HunterLab 56.1189, 6.5320, 10.0859 is called "color". The color property can be set on classes, ids or directly on the HTML element.

This example shows how text in the color `rgb(178, 145, 136)` looks like.

```
.text, #text, p{  
    color:rgb(178, 145, 136)  
}
```

If you want to add a text shadow in that color use the text-shadow property, you can generate a text shadow directly with our [CSS Text Shadow Generator](#).

Here you see how black text with a 4 pixel rgb(178, 145, 136) colored shadow looks like.

```
.shadow{ text-shadow: 4px 4px 2px rgb(178, 145, 136) }
```

Border

The CSS property to change the border of an element to HunterLab 56.1189, 6.5320, 10.0859 is called "border". The border property can be set on classes, ids or directly on the HTML element.

This example shows the color as border, it can be applied via the CSS property "border" or "border-color".

```
.border, #border, table{ border:4px solid rgb(178, 145, 136) }
```


If only the border color should be changed use the property `border-color`.

```
.border{ border-color:rgb(178, 145, 136) }
```

If you want to add a box shadow in that color use:

Here you see how a box with a 4 pixel `rgb(178, 145, 136)` colored shadow looks like.

```
.boxshadow{ -moz-box-shadow:4px 4px 4px  
4px rgb(178, 145, 136); -webkit-box-  
shadow:4px 4px 4px 4px rgb(178, 145, 136);  
box-shadow:4px 4px 4px 4px rgb(178, 145,  
136) }
```

Background

The CSS property to change the background color of an element to HunterLab 56.1189, 6.5320, 10.0859 is called "background". The background property can be set on classes, ids or directly on the HTML element.

```
.background, #background, body{  
background: rgb(178, 145, 136) }
```

If only the background color should be changed can be used:

```
.background{ background-color: rgb(178,  
145, 136) }
```

This example shows the color as background, it is applied via the CSS property "background".

To optimize and compress your CSS code, you can use our [online CSS compressor and optimizer](#) based on csstidy. If you want to create a linear or radial gradient as background or border, check our [CSS Gradient Generator](#).

Hey! You found this booklet interesting? Support Converting Colors with the new Membership Option!

The pro membership hides all ads, plus gives you double the colors in the color bucket, and more awesome pro features!

[Learn more, Memberships starting at \\$2.50/m!](#)

**Follow me
on Twitter!**

@ConvertingColor