

Converting Colors

HunterLab(56.1501, 29.4588,
8.9282)

Have a look what the booklet for
HunterLab(56.1501, 29.4588,
8.9282) contains.

HunterLab(56.2387, 29.1262, 9.0069)	3
<i>Conversions</i>	4
<i>Details</i>	6
<i>Harmonies</i>	12
<i>Previews</i>	24
<i>Color Blindness Simulation</i>	28
<i>CSS Examples</i>	31

Color

**HunterLab(56.2387, 29.1262,
9.0069)**

Conversions

Conversions Part 1

Format	Color
Hex	D6808C
RGB	214, 128, 140
RGB Percent	84%, 50%, 55%
CMY	0.1608, 0.4980, 0.4510
CMYK	0.00, 0.40, 0.35, 0.16
HSL	352°, 51%, 67%
HSV	352°, 40%, 84%
XYZ	40.1843, 31.6279, 28.7977
YIQ	155.0820, 47.4040, 21.9640

Conversions

Conversions Part 2

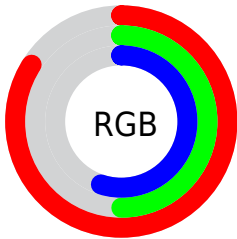
Format	Color
R _Y B	214, 128, 140
Decimal	14057612
CIE Lab	63.04, 34.60, 7.89
CIE LCh	63, 35.489, 12.841
Yxy	31.6295, 0.3994, 0.3144
Android (android.graphics.Color)	4292247692 (0xFFD6808C)
YUV	155.0820, -7.4354, 51.6711
Hunter-Lab	56.2387, 29.1262, 9.0069

Details

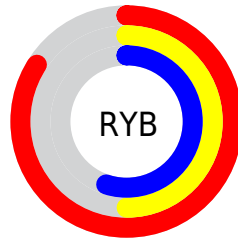
The HunterLab color **56.2387, 29.1262, 9.0069** is a light color, and the websafe version is hex **FF9999**. A complement of this color would be **75.4635, -28.9048, 2.0903**, and the grayscale version is **57.3021, -3.0575, 3.1133**.

A 20% lighter version of the original color is **76.5285, 23.7347, 8.4846**, and **36.3511, 26.7571, 7.0910** is the 20% darker color. If you saturate the color by 10%, you get **51.1120, 37.7986, 10.9542**, and if you desaturate by 10%, it is **61.9699, 20.4543, 7.4149**.

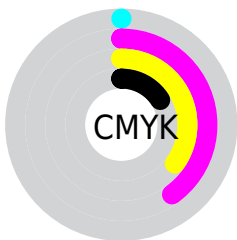
Distribution



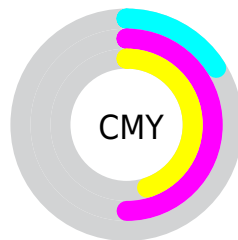
- Red (84%)
- Green (50%)
- Blue (55%)



- Red (84%)
- Yellow (50%)
- Blue (55%)



- Cyan (0%)
- Magenta (40%)
- Yellow (35%)
- Black (16%)



- Cyan (16%)
- Magenta (50%)
- Yellow (45%)

Brightness & Saturation Gradients

These gradients show how the HunterLab color 56.2387, 29.1262, 9.0069 changes by changing the brightness by 10 percent. The first figure shows a shift by +10% for each color and the second figure -10%.

Similar to the brightness gradients but the following saturation gradients show a change of the HunterLab color 56.2387, 29.1262, 9.0069 by changing the saturation by 10% instead.

■ 56.2387, 29.1262,
9.0069

■ 56.2387, 29.1262,
9.0069

175.9056, 35.1751,
18.5478

■ 45.9115, 28.0026,
8.0095

■ 78.8858, 31.0415,
11.0303

■ 36.3063, 26.7602,
7.0137

■ 91.1307, 31.8577,
12.0592

■ 27.4839, 25.3866,
6.0130

■ 103.9507, 32.5890,
13.1019

■ 19.5210, 23.8801,
4.9943

117.3212, 33.2421,
14.1595

■ 12.5229, 22.2745,
3.9325

131.2204, 33.8227,
15.2325

■ 5.7969, 27.0204,
4.0578

145.6288, 34.3355,

0.0000, INF, NaN

16.3214

0.0000, NaN, NaN

160.5292, 34.7851,
17.4264

0.0000, NaN, NaN

■ 56.2387, 29.1262,
9.0069

■ 56.2387, 29.1262,
9.0069

■ 51.1120, 37.7986,
10.9542

■ 61.9699, 20.4543,
7.4149

■ 46.6994, 46.1445,
13.2351

■ 68.2028, 11.9675,
6.1533

■ 43.1197, 53.6313,
15.7616

■ 74.8579, 3.7347,
5.1845

■ 40.4702, 59.5888,
18.3522

■ 81.8704, -4.2311,
4.4665

■ 38.7885, 63.4201,
20.7496

■ 89.1889, -11.9463,
3.9601

■ 37.9330, 65.2065,
22.6115

■ 96.3063, -18.7320,
3.0869

■ 96.4553, -17.8959,
0.9676

Harmonies

Analogous

The Analogous color harmony consists of three colors that are next to each other on the color wheel.



56.2401, 28.4191, -5.9670



56.2387, 29.1262, 9.0069



56.2401, 20.5741, 19.1357

Triad

The Triadic color harmony groups three colors that are evenly spaced from another and form a triangle on the color wheel.



56.2401, 29.1233, 9.0080



56.2401, -21.8781, 20.1419



56.2401, -11.5337, -31.3473

Complementary

The Complementary color scheme is a pair of colors which are on the opposite of each other on the color wheel.



56.2387, 29.1262, 9.0069



75.4635, -28.9048, 2.0903

Split Complementary

Split-complementary colors differ from the complementary color scheme. The scheme consists of three colors, the original color and two neighbors of the complement color.



56.2401, -23.2414, -19.8448



56.2387, 29.1262, 9.0069



56.2401, -28.7545, 10.8036

Square

The Square scheme is like the rectangle color scheme, but the four colors are evenly spaced on the color wheel.



56.2401, 29.1233, 9.0080



56.2401, -9.4791, 24.2903



56.2401, -29.2249, -3.6152



56.2401, 3.7783, -32.2134

Rectangle

The Rectangle color scheme consists of four colors that form a rectangle on the color wheel.



56.2387, 29.1262, 9.0069



56.2401, 11.2652, 22.9038



56.2401, -29.2249, -3.6152



56.2401, -15.9784, -28.4783

Sweetspot

The Sweet Spot groups the original color and five complimentary colors.



56.2401, 29.1233, 9.0080



89.6801, 6.4720, 6.5256



57.2070, 37.0916, -30.0348



40.9878, 3.6023, 3.0862

0.0000, NaN, NaN



46.2646, -2.4686, 2.5136

Same Dimension

The Same Dimension uses a secret algorithm to generate beautiful new colors.



56.2401, 29.1233, 9.0080



63.3382, 44.3050, 12.9233



63.5169, 12.1402, 20.2865



35.2828, 1.4593, 2.3971



29.5065, 50.7519, 17.3523



7.3105, 12.7008, 3.3188

Inverse Universe

The Inverse Universe completely reimagines the original color for something new.



56.2401, 29.1233, 9.0080



63.3382, 44.3050, 12.9233



66.0946, -12.6060, -16.5622



35.2828, 1.4593, 2.3971



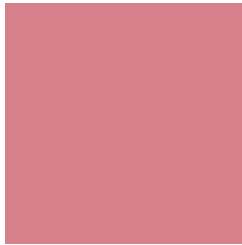
29.5065, 50.7519, 17.3523



7.3105, 12.7008, 3.3188

Previews

White Background



This preview shows how the HunterLab color 56.2387, 29.1262, 9.0069 looks on a white background.

Color Contrast Check

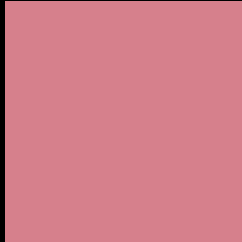
Large Text (above 18pt) WCAG AA × Fail

Any Text WCAG AA × Fail

Large Text (above 18pt) WCAG AAA × Fail

Any Text WCAG AAA × Fail

Black Background



This preview shows how the HunterLab color 56.2387, 29.1262, 9.0069 looks on a black background.

Color Contrast Check

Large Text (above 18pt) WCAG AA ✓ Pass

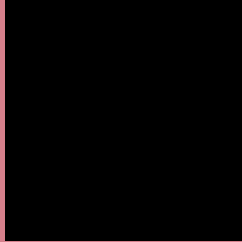
Any Text WCAG AA ✓ Pass

Large Text (above 18pt) WCAG AAA ✓ Pass

Any Text WCAG AAA ✓ Pass

If you want to check with other color combinations, try the [Color Contrast Checker](#).

HunterLab 56.2387, 29.1262, 9.0069 Background



This preview shows how black text looks on a background with the HunterLab color 56.2387, 29.1262, 9.0069.



This preview shows how white text looks on a background with the HunterLab color 56.2387, 29.1262, 9.0069.

Color Blindness Simulation

Color vision deficiency is a very complex topic, and I could not describe the different causes any better than Wikipedia does, so if you want to learn more, you should check out their [article about color blindness](#).

Dichromacy



Original Color

56.2387, 29.1262, 9.0069

Protanopia

56.3249, -1.9246, 2.9500

Deuteranopia

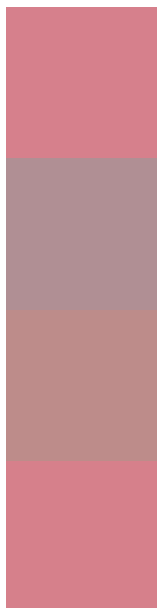
56.2781, 4.2927, 9.8199



Tritanopia

56.1867, 28.8708, 9.7546

Trichromacy



Original Color

56.2387, 29.1262, 9.0069

Protanomaly

55.6894, 8.5491, 4.6369

Deuteranomaly

56.0446, 13.2422, 9.3291

Tritanomaly

56.2126, 28.9980, 9.3823

Monochromacy



Original Color

56.2387, 29.1262, 9.0069

Achromatopsia

57.2519, -3.0548, 3.1106

Achromatomaly

56.2876, 7.8432, 4.4282

CSS Examples

Text

The CSS property to change the color of the text to HunterLab 56.2387, 29.1262, 9.0069 is called "color". The color property can be set on classes, ids or directly on the HTML element.

This example shows how text in the color `rgb(214, 128, 140)` looks like.

```
.text, #text, p{  
    color:rgb(214, 128, 140)  
}
```

If you want to add a text shadow in that color use the text-shadow property, you can generate a text shadow directly with our [CSS Text Shadow Generator](#).

Here you see how black text with a 4 pixel rgb(214, 128, 140) colored shadow looks like.

```
.shadow{ text-shadow: 4px 4px 2px rgb(214, 128, 140) }
```

Border

The CSS property to change the border of an element to HunterLab 56.2387, 29.1262, 9.0069 is called "border". The border property can be set on classes, ids or directly on the HTML element.

This example shows the color as border, it can be applied via the CSS property "border" or "border-color".

```
.border, #border, table{ border:4px solid rgb(214, 128, 140) }
```


If only the border color should be changed use the property border-color.

```
.border{ border-color:rgb(214, 128, 140) }
```

If you want to add a box shadow in that color use:

Here you see how a box with a 4 pixel rgb(214, 128, 140) colored shadow looks like.

```
.boxshadow{ -moz-box-shadow:4px 4px 4px  
4px rgb(214, 128, 140); -webkit-box-  
shadow:4px 4px 4px 4px rgb(214, 128, 140);  
box-shadow:4px 4px 4px 4px rgb(214, 128,  
140) }
```

Background

The CSS property to change the background color of an element to HunterLab 56.2387, 29.1262, 9.0069 is called "background". The background property can be set on classes, ids or directly on the HTML element.

```
.background, #background, body{  
background: rgb(214, 128, 140) }
```

If only the background color should be changed can be used:

```
.background{ background-color: rgb(214,  
128, 140) }
```

This example shows the color as background, it is applied via the CSS property "background".

To optimize and compress your CSS code, you can use our [online CSS compressor and optimizer](#) based on csstidy. If you want to create a linear or radial gradient as background or border, check our [CSS Gradient Generator](#).

Hey! You found this booklet interesting? Support Converting Colors with the new Membership Option!

The pro membership hides all ads, plus gives you double the colors in the color bucket, and more awesome pro features!

[Learn more, Memberships starting at \\$2.50/m!](#)

**Follow me
on Twitter!**

@ConvertingColor