

Converting Colors

HunterLab(56.1526, 5.1285,
14.2038)

Have a look what the booklet for
HunterLab(56.1526, 5.1285,
14.2038) contains.

HunterLab(56.2336, 4.9800, 14.2815)	3
<i>Conversions</i>	4
<i>Details</i>	6
<i>Harmonies</i>	12
<i>Previews</i>	24
<i>Color Blindness Simulation</i>	28
<i>CSS Examples</i>	31

Color

**HunterLab(56.2336, 4.9800,
14.2815)**

Conversions

Conversions Part 1

Format	Color
Hex	B3927D
RGB	179, 146, 125
RGB Percent	70%, 57%, 49%
CMY	0.2980, 0.4274, 0.5098
CMYK	0.00, 0.18, 0.30, 0.30
HSL	23°, 26%, 60%
HSV	23°, 30%, 70%
XYZ	32.5710, 31.6222, 23.7890
YIQ	153.4730, 26.4090, 0.4650

Conversions

Conversions Part 2

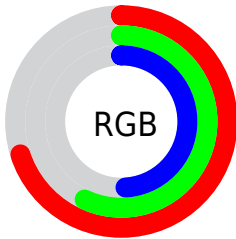
Format	Color
RYB	179, 159, 125
Decimal	11768445
CIELab	63.03, 9.25, 15.80
CIELCh	63, 18.307, 59.665
Yxy	31.6236, 0.3702, 0.3594
Android (android.graphics.Color)	4289958525 (0xFFB3927D)
YUV	153.4730, -14.0372, 22.3872
Hunter-Lab	56.2336, 4.9800, 14.2815

Details

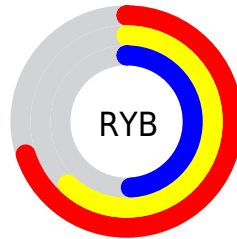
The HunterLab color $56.2336, 4.9800, 14.2815$ is a light color, and the websafe version is hex $CC9999$. A complement of this color would be $56.6281, -8.2522, -9.9032$, and the grayscale version is $56.6805, -3.0243, 3.0796$.

A 20% lighter version of the original color is $78.9657, 4.8580, 17.1186$, and $36.3971, 4.6937, 11.3718$ is the 20% darker color. If you saturate the color by 10%, you get $52.9094, 8.3594, 17.1302$, and if you desaturate by 10%, it is $59.7146, 1.8802, 11.0659$.

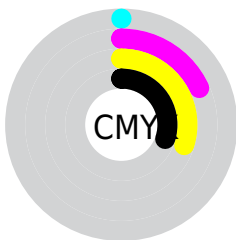
Distribution



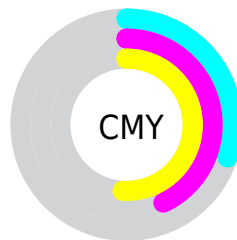
- Red (70%)
- Green (57%)
- Blue (49%)



- Red (70%)
- Yellow (62%)
- Blue (49%)



- Cyan (0%)
- Magenta (18%)
- Yellow (30%)
- Black (30%)



- Cyan (30%)
- Magenta (43%)
- Yellow (51%)

Brightness & Saturation Gradients

These gradients show how the HunterLab color 56.2336, 4.9800, 14.2815 changes by changing the brightness by 10 percent. The first figure shows a shift by +10% for each color and the second figure -10%.

Similar to the brightness gradients but the following saturation gradients show a change of the HunterLab color 56.2336, 4.9800, 14.2815 by changing the saturation by 10% instead.

■ 56.2336, 4.9800,
14.2815

■ 56.2336, 4.9800,
14.2815

175.8980, 2.1114,
27.0610

■ 45.9066, 5.0367,
12.8043

■ 78.8800, 4.6730,
17.1629

■ 36.3019, 5.0222,
11.2840

■ 91.1246, 4.4385,
18.5820

■ 27.4798, 4.9230,
9.6998

■ 103.9444, 4.1552,
19.9944

■ 19.5174, 4.7226,
8.0168

117.3146, 3.8266,
21.4038

■ 12.5198, 4.3963,
6.5568

131.2135, 3.4556,
22.8131

■ 5.7923, 6.6463,
4.0546

145.6217, 3.0447,

0.0000, NaN, NaN

24.2246

0.0000, NaN, NaN

160.5218, 2.5960,
25.6401

0.0000, NaN, NaN

■ 56.2336, 4.9800,
14.2815

■ 56.2336, 4.9800,
14.2815

■ 52.9094, 8.3594,
17.1302

■ 59.7146, 1.8802,
11.0659

■ 49.7555, 12.0371,
19.5547

■ 63.3332, -0.9525,
7.5292

■ 46.7928, 16.0131,
21.4961

■ 67.0772, -3.5412,
3.7138

■ 44.0423, 20.2720,
22.8939

■ 70.9350, -5.9077,
-0.3453

■ 41.5265, 24.7729,
23.6957

■ 74.8964, -8.0733,
-4.6187

■ 39.2671, 29.4393,
23.8731

■ 78.9527, -10.0578,
-9.0815

■ 37.3057, 34.0339,
23.5834

■ 83.0962, -11.8796,
-13.7131

■ 86.8150, -16.3826,
-11.4038

■ 90.4281, -21.8006,
-6.6907

Harmonies

Analogous

The Analogous color harmony consists of three colors that are next to each other on the color wheel.



56.2349, 10.9963, 9.8322



56.2336, 4.9800, 14.2815



56.2349, -2.9136, 15.8155

Triad

The Triadic color harmony groups three colors that are evenly spaced from another and form a triangle on the color wheel.



56.2349, 4.9780, 14.2823



56.2349, -17.5735, 3.1465



56.2349, 4.8138, -11.1958

Complementary

The Complementary color scheme is a pair of colors which are on the opposite of each other on the color wheel.



56.2336, 4.9800, 14.2815



56.6281, -8.2522, -9.9032

Split Complementary

Split-complementary colors differ from the complementary color scheme. The scheme consists of three colors, the original color and two neighbors of the complement color.



56.2349, -3.0934, -13.6252



56.2336, 4.9800, 14.2815



56.2349, -15.7551, -4.6733

Square

The Square scheme is like the rectangle color scheme, but the four colors are evenly spaced on the color wheel.



56.2349, 4.9780, 14.2823



56.2349, -15.6734, 9.9611



56.2349, -10.5634, -11.0892



56.2349, 10.8978, -4.8420

Rectangle

The Rectangle color scheme consists of four colors that form a rectangle on the color wheel.



56.2336, 4.9800, 14.2815



56.2349, -8.0869, 15.1703



56.2349, -10.5634, -11.0892



56.2349, 2.2670, -12.5349

Sweetspot

The Sweet Spot groups the original color and five complimentary colors.



56.2349, 4.9780, 14.2823



85.2581, -1.6407, 9.5740



51.7013, 20.4237, -5.0359



39.7951, -0.5269, 4.8419



95.4677, -5.0939, 5.1869



42.2927, -2.2566, 2.2978

Same Dimension

The Same Dimension uses a secret algorithm to generate beautiful new colors.



56.2349, 4.9780, 14.2823



72.3659, 9.5318, 21.6294



63.9037, -7.9823, 21.2358



30.0489, -0.5577, 3.4068



31.5484, 28.1167, 19.9322



6.5452, 2.7545, 4.0813

Inverse Universe

The Inverse Universe completely reimagines the original color for something new.



56.6281, -8.2522, -9.9032



72.9908, -11.7430, -17.2730



48.9166, 4.7145, -21.4673



30.1088, -2.5377, -0.2113



31.9606, -1.7162, -36.2431



6.5626, -1.6908, -4.5527

Previews

White Background



This preview shows how the HunterLab color 56.2336, 4.9800, 14.2815 looks on a white background.

Color Contrast Check

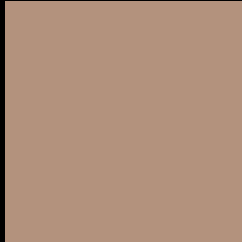
Large Text (above 18pt) WCAG AA × Fail

Any Text WCAG AA × Fail

Large Text (above 18pt) WCAG AAA × Fail

Any Text WCAG AAA × Fail

Black Background



This preview shows how the HunterLab color 56.2336, 4.9800, 14.2815 looks on a black background.

Color Contrast Check

Large Text (above 18pt) WCAG AA ✓ Pass

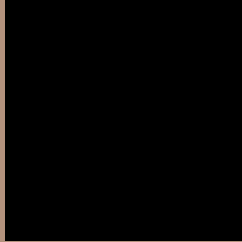
Any Text WCAG AA ✓ Pass

Large Text (above 18pt) WCAG AAA ✓ Pass

Any Text WCAG AAA ✓ Pass

If you want to check with other color combinations, try the [Color Contrast Checker](#).

HunterLab 56.2336, 4.9800, 14.2815 Background



This preview shows how black text looks on a background with the HunterLab color 56.2336, 4.9800, 14.2815.



This preview shows how white text looks on a background with the HunterLab color 56.2336, 4.9800,

Color Blindness Simulation

Color vision deficiency is a very complex topic, and I could not describe the different causes any better than Wikipedia does, so if you want to learn more, you should check out their [article about color blindness](#).

Dichromacy



Original Color

56.2336, 4.9800, 14.2815

Protanopia

56.2068, -3.6526, 13.0281

Deuteranopia

56.2985, 3.7829, 14.3241



Tritanopia

56.2059, 11.8859, 3.0512

Trichromacy



Original Color

56.2336, 4.9800, 14.2815

Protanomaly

56.2760, -0.5179, 13.5139

Deuteranomaly

56.4031, 4.1337, 14.4326

Tritanomaly

56.0819, 9.5527, 7.2516

Monochromacy



Original Color

56.2336, 4.9800, 14.2815

Achromatopsia

56.4399, -3.0115, 3.0665

Achromatomaly

56.1046, -0.3038, 7.1040

CSS Examples

Text

The CSS property to change the color of the text to HunterLab 56.2336, 4.9800, 14.2815 is called "color". The color property can be set on classes, ids or directly on the HTML element.

This example shows how text in the color `rgb(179, 146, 125)` looks like.

```
.text, #text, p{  
    color:rgb(179, 146, 125)  
}
```

If you want to add a text shadow in that color use the text-shadow property, you can generate a text shadow directly with our [CSS Text Shadow Generator](#).

Here you see how black text with a 4 pixel rgb(179, 146, 125) colored shadow looks like.

```
.shadow{ text-shadow: 4px 4px 2px rgb(179, 146, 125) }
```

Border

The CSS property to change the border of an element to HunterLab 56.2336, 4.9800, 14.2815 is called "border". The border property can be set on classes, ids or directly on the HTML element.

This example shows the color as border, it can be applied via the CSS property "border" or "border-color".

```
.border, #border, table{ border:4px solid rgb(179, 146, 125) }
```


If only the border color should be changed use the property `border-color`.

```
.border{ border-color:rgb(179, 146, 125) }
```

If you want to add a box shadow in that color use:

Here you see how a box with a 4 pixel `rgb(179, 146, 125)` colored shadow looks like.

```
.boxshadow{ -moz-box-shadow:4px 4px 4px  
4px rgb(179, 146, 125); -webkit-box-  
shadow:4px 4px 4px 4px rgb(179, 146, 125);  
box-shadow:4px 4px 4px 4px rgb(179, 146,  
125) }
```

Background

The CSS property to change the background color of an element to HunterLab 56.2336, 4.9800, 14.2815 is called "background". The background property can be set on classes, ids or directly on the HTML element.

```
.background, #background, body{  
background: rgb(179, 146, 125) }
```

If only the background color should be changed can be used:

```
.background{ background-color: rgb(179,  
146, 125) }
```

This example shows the color as background, it is applied via the CSS property "background".

To optimize and compress your CSS code, you can use our [online CSS compressor and optimizer](#) based on csstidy. If you want to create a linear or radial gradient as background or border, check our [CSS Gradient Generator](#).

Hey! You found this booklet interesting? Support Converting Colors with the new Membership Option!

The pro membership hides all ads, plus gives you double the colors in the color bucket, and more awesome pro features!

[Learn more, Memberships starting at \\$2.50/m!](#)

**Follow me
on Twitter!**

@ConvertingColor