

Converting Colors

HunterLab(56.1733, 5.2680,
17.5990)

Have a look what the booklet for
HunterLab(56.1733, 5.2680,
17.5990) contains.

HunterLab(56.0658, 5.3932, 17.4895)	3
<i>Conversions</i>	4
<i>Details</i>	6
<i>Harmonies</i>	12
<i>Previews</i>	24
<i>Color Blindness Simulation</i>	28
<i>CSS Examples</i>	31

Color

**HunterLab(56.0658, 5.3932,
17.4895)**

Conversions

Conversions Part 1

Format	Color
Hex	B69173
RGB	182, 145, 115
RGB Percent	71%, 57%, 45%
CMY	0.2863, 0.4314, 0.5490
CMYK	0.00, 0.20, 0.37, 0.29
HSL	27°, 31%, 58%
HSV	27°, 37%, 71%
XYZ	32.5114, 31.4337, 20.5734
YIQ	152.6430, 31.6820, -1.4860

Conversions

Conversions Part 2

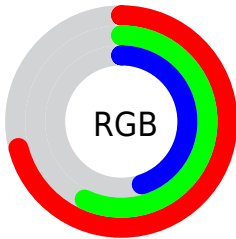
Format	Color
RYB	182, 169, 115
Decimal	11964787
CIELab	62.87, 9.71, 21.22
CIELCh	63, 23.338, 65.413
Yxy	31.4352, 0.3847, 0.3719
Android (android.graphics.Color)	4290154867 (0xFFB69173)
YUV	152.6430, -18.5580, 25.7461
Hunter-Lab	56.0658, 5.3932, 17.4895

Details

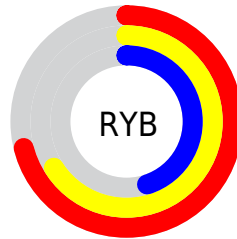
The HunterLab color **56.0658, 5.3932, 17.4895** is a light color, and the websafe version is hex **CC9966**. A complement of this color would be **54.2934, -7.0952, -14.9978**, and the grayscale version is **56.3601, -3.0072, 3.0622**.

A 20% lighter version of the original color is **78.7322, 5.0398, 21.0714**, and **36.3027, 5.3446, 13.7905** is the 20% darker color. If you saturate the color by 10%, you get **53.0282, 8.5131, 20.2343**, and if you desaturate by 10%, it is **59.2494, 2.5692, 14.2757**.

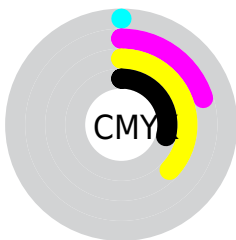
Distribution



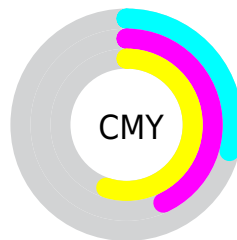
- Red (71%)
- Green (57%)
- Blue (45%)



- Red (71%)
- Yellow (66%)
- Blue (45%)



- Cyan (0%)
- Magenta (20%)
- Yellow (37%)
- Black (29%)



- Cyan (29%)
- Magenta (43%)
- Yellow (55%)

Brightness & Saturation Gradients

These gradients show how the HunterLab color 56.0658, 5.3932, 17.4895 changes by changing the brightness by 10 percent. The first figure shows a shift by +10% for each color and the second figure -10%.

Similar to the brightness gradients but the following saturation gradients show a change of the HunterLab color 56.0658, 5.3932, 17.4895 by changing the saturation by 10% instead.

 56.0658, 5.3932,
17.4895


 56.0658, 5.3932,
17.4895

175.6526, 2.7043,
32.5928


 45.7498, 5.4247,
15.6636


 78.6922, 5.1321,
20.9920


 36.1569, 5.3835,
13.7607


 90.9275, 4.9190,
22.6922

 27.3477, 5.2556,
11.7501


 103.7384, 4.6562,
24.3700

 19.3995, 5.0239,
9.5830

 117.1002, 4.3473,
26.0314

 12.4182, 4.6629,
8.3677

130.9909, 3.9952,
27.6811

 5.6400, 7.2009,
3.9480

145.3913, 3.6026,

0.0000, NaN, NaN

29.3227

0.0000, NaN, NaN

160.2837, 3.1717,
30.9591

0.0000, NaN, NaN

■ 56.0658, 5.3932,
17.4895

■ 56.0658, 5.3932,
17.4895

■ 53.0282, 8.5131,
20.2343

■ 59.2494, 2.5692,
14.2757

■ 50.1469, 11.9452,
22.4533

■ 62.5623, 0.0314,
10.6421

■ 47.4386, 15.6871,
24.0934

■ 65.9941, -2.2417,
6.6365

■ 44.9193, 19.7220,
25.1081

■ 69.5345, -4.2710,
2.3003

■ 42.6048, 24.0104,
25.4706

■ 73.1745, -6.0769,
-2.3301

■ 40.5077, 28.4738,
25.2153

■ 76.9061, -7.6794,
-7.2232

■ 39.8812, 29.8903,
25.0979

■ 80.7221, -9.0969,
-12.3519

■ 84.3997, -11.5496,
-14.6565

■ 87.6589, -16.6057,
-10.2658

Harmonies

Analogous

The Analogous color harmony consists of three colors that are next to each other on the color wheel.



56.0671, 13.8805, 12.8119



56.0658, 5.3932, 17.4895



56.0671, -4.8306, 18.6145

Triad

The Triadic color harmony groups three colors that are evenly spaced from another and form a triangle on the color wheel.



56.0671, 5.3910, 17.4903



56.0671, -21.1942, 1.2654



56.0671, 8.8143, -14.3586

Complementary

The Complementary color scheme is a pair of colors which are on the opposite of each other on the color wheel.



56.0658, 5.3932, 17.4895



54.2934, -7.0952, -14.9978

Split Complementary

Split-complementary colors differ from the complementary color scheme. The scheme consists of three colors, the original color and two neighbors of the complement color.



56.0671, -1.1347, -18.8498



56.0658, 5.3932, 17.4895



56.0671, -18.0833, -8.8558

Square

The Square scheme is like the rectangle color scheme, but the four colors are evenly spaced on the color wheel.



56.0671, 5.3910, 17.4903



56.0671, -19.7190, 10.2649



56.0671, -10.9146, -16.6752



56.0671, 15.9536, -5.2684

Rectangle

The Rectangle color scheme consists of four colors that form a rectangle on the color wheel.



56.0658, 5.3932, 17.4895



56.0671, -11.1560, 17.4093



56.0671, -10.9146, -16.6752



56.0671, 5.6621, -16.5236

Sweetspot

The Sweet Spot groups the original color and five complimentary colors.



56.0671, 5.3910, 17.4903



86.8195, -1.7219, 11.3526



49.5032, 25.7607, -5.1235



40.5094, -0.6152, 5.6773



96.5975, -5.1542, 5.2483



43.2801, -2.3093, 2.3515

Same Dimension

The Same Dimension uses a secret algorithm to generate beautiful new colors.



56.0671, 5.3910, 17.4903



72.2305, 10.5593, 26.5364



65.4511, -10.3217, 25.4567



31.0751, -0.8067, 3.6666



33.7059, 24.6476, 21.2009



7.2412, 2.5779, 4.5071

Inverse Universe

The Inverse Universe completely reimagines the original color for something new.



54.2934, -7.0952, -14.9978



69.3568, -9.5368, -26.0196



45.0862, 8.8585, -30.2614



30.8536, -2.3818, -0.3990



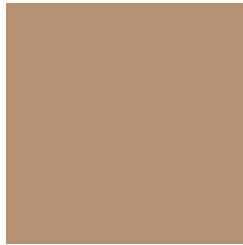
30.0388, 2.5875, -43.1316



6.6309, -1.1593, -5.7855

Previews

White Background



This preview shows how the HunterLab color 56.0658, 5.3932, 17.4895 looks on a white background.

Color Contrast Check

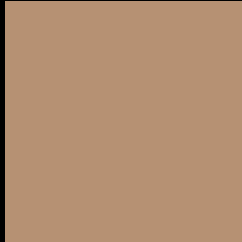
Large Text (above 18pt) WCAG AA × Fail

Any Text WCAG AA × Fail

Large Text (above 18pt) WCAG AAA × Fail

Any Text WCAG AAA × Fail

Black Background



This preview shows how the HunterLab color 56.0658, 5.3932, 17.4895 looks on a black background.

Color Contrast Check

Large Text (above 18pt) WCAG AA ✓ Pass

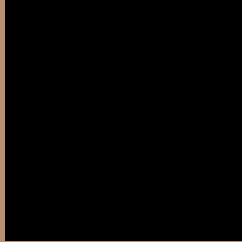
Any Text WCAG AA ✓ Pass

Large Text (above 18pt) WCAG AAA ✓ Pass

Any Text WCAG AAA ✓ Pass

If you want to check with other color combinations, try the [Color Contrast Checker](#).

HunterLab 56.0658, 5.3932, 17.4895 Background



This preview shows how black text looks on a background with the HunterLab color 56.0658, 5.3932, 17.4895.



This preview shows how white text looks on a background with the HunterLab color 56.0658, 5.3932,

17.4895.

Color Blindness Simulation

Color vision deficiency is a very complex topic, and I could not describe the different causes any better than Wikipedia does, so if you want to learn more, you should check out their [article about color blindness](#).

Dichromacy



Original Color

56.0658, 5.3932, 17.4895

Protanopia

56.0766, -4.5542, 16.3527

Deuteranopia

56.0172, 3.8232, 17.4172



Tritanopia

56.0621, 14.0105, 3.8266

Trichromacy



Original Color

56.0658, 5.3932, 17.4895

Protanomaly

55.8697, -0.9000, 16.5510

Deuteranomaly

56.1239, 4.1808, 17.5218

Tritanomaly

56.1206, 10.7834, 9.3674

Monochromacy



Original Color

56.0658, 5.3932, 17.4895

Achromatopsia

56.4399, -3.0115, 3.0665

Achromatomaly

56.1866, -0.2347, 8.8425

CSS Examples

Text

The CSS property to change the color of the text to HunterLab 56.0658, 5.3932, 17.4895 is called "color". The color property can be set on classes, ids or directly on the HTML element.

This example shows how text in the color `rgb(182, 145, 115)` looks like.

```
.text, #text, p{  
    color:rgb(182, 145, 115)  
}
```

If you want to add a text shadow in that color use the text-shadow property, you can generate a text shadow directly with our [CSS Text Shadow Generator](#).

Here you see how black text with a 4 pixel rgb(182, 145, 115) colored shadow looks like.

```
.shadow{ text-shadow: 4px 4px 2px rgb(182, 145, 115) }
```

Border

The CSS property to change the border of an element to HunterLab 56.0658, 5.3932, 17.4895 is called "border". The border property can be set on classes, ids or directly on the HTML element.

This example shows the color as border, it can be applied via the CSS property "border" or "border-color".

```
.border, #border, table{ border:4px solid rgb(182, 145, 115) }
```


If only the border color should be changed use the property `border-color`.

```
.border{ border-color:rgb(182, 145, 115) }
```

If you want to add a box shadow in that color use:

Here you see how a box with a 4 pixel `rgb(182, 145, 115)` colored shadow looks like.

```
.boxshadow{ -moz-box-shadow:4px 4px 4px  
4px rgb(182, 145, 115); -webkit-box-  
shadow:4px 4px 4px 4px rgb(182, 145, 115);  
box-shadow:4px 4px 4px 4px rgb(182, 145,  
115) }
```

Background

The CSS property to change the background color of an element to HunterLab 56.0658, 5.3932, 17.4895 is called "background". The background property can be set on classes, ids or directly on the HTML element.

```
.background, #background, body{  
background: rgb(182, 145, 115) }
```

If only the background color should be changed can be used:

```
.background{ background-color: rgb(182,  
145, 115) }
```

This example shows the color as background, it is applied via the CSS property "background".

To optimize and compress your CSS code, you can use our [online CSS compressor and optimizer](#) based on csstidy. If you want to create a linear or radial gradient as background or border, check our [CSS Gradient Generator](#).

Hey! You found this booklet interesting? Support Converting Colors with the new Membership Option!

The pro membership hides all ads, plus gives you double the colors in the color bucket, and more awesome pro features!

[Learn more, Memberships starting at \\$2.50/m!](#)

**Follow me
on Twitter!**

@ConvertingColor