

Converting Colors

HunterLab(56.2022, 5.0031,
18.0581)

Have a look what the booklet for
HunterLab(56.2022, 5.0031,
18.0581) contains.

HunterLab(56.3185, 4.7913, 18.0276)	3
<i>Conversions</i>	4
<i>Details</i>	6
<i>Harmonies</i>	12
<i>Previews</i>	24
<i>Color Blindness Simulation</i>	28
<i>CSS Examples</i>	31

Color

**HunterLab(56.3185, 4.7913,
18.0276)**

Conversions

Conversions Part 1

Format	Color
Hex	B69272
RGB	182, 146, 114
RGB Percent	71%, 57%, 45%
CMY	0.2863, 0.4274, 0.5529
CMYK	0.00, 0.20, 0.37, 0.29
HSL	28°, 32%, 58%
HSV	28°, 37%, 71%
XYZ	32.6075, 31.7177, 20.3231
YIQ	153.1160, 31.7280, -2.3200

Conversions

Conversions Part 2

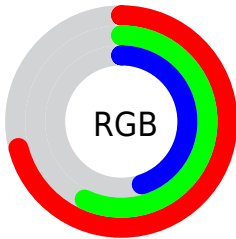
Format	Color
RYB	182, 174, 114
Decimal	11965042
CIELab	63.11, 9.03, 22.10
CIELCh	63, 23.873, 67.764
Yxy	31.7192, 0.3852, 0.3747
Android (android.graphics.Color)	4290155122 (0xFFB69272)
YUV	153.1160, -19.2842, 25.3313
Hunter-Lab	56.3185, 4.7913, 18.0276

Details

The HunterLab color $56.3185, 4.7913, 18.0276$ is a light color, and the websafe version is hex $CC9966$. A complement of this color would be $53.6343, -6.3684, -15.9849$, and the grayscale version is $56.5547, -3.0176, 3.0727$.

A 20% lighter version of the original color is $79.0016, 4.3949, 21.6823$, and $36.5353, 4.7966, 14.2325$ is the 20% darker color. If you saturate the color by 10%, you get $53.3843, 7.7239, 20.7931$, and if you desaturate by 10%, it is $59.3906, 2.1554, 14.7690$.

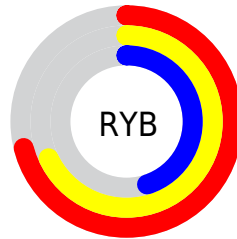
Distribution



Red (71%)

Green (57%)

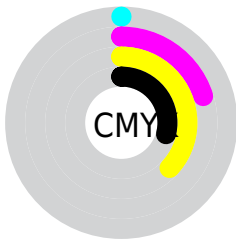
Blue (45%)



Red (71%)

Yellow (68%)

Blue (45%)

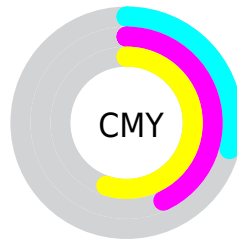


Cyan (0%)

Magenta (20%)

Yellow (37%)

Black (29%)



Cyan (29%)

Magenta (43%)

Yellow (55%)

Brightness & Saturation Gradients

These gradients show how the HunterLab color 56.3185, 4.7913, 18.0276 changes by changing the brightness by 10 percent. The first figure shows a shift by +10% for each color and the second figure -10%.

Similar to the brightness gradients but the following saturation gradients show a change of the HunterLab color 56.3185, 4.7913, 18.0276 by changing the saturation by 10% instead.

■ 56.3185, 4.7913,
18.0276

■ 56.3185, 4.7913,
18.0276

176.0222, 1.8400,
33.5090

■ 45.9860, 4.8593,
16.1459

■ 78.9751, 4.4630,
21.6303

■ 36.3753, 4.8571,
14.1822

■ 91.2243, 4.2187,
23.3761

■ 27.5467, 4.7712,
12.1049

■ 104.0486, 3.9260,
25.0971

■ 19.5770, 4.5853,
9.8635

■ 117.4231, 3.5884,
26.7997

■ 12.5713, 4.2749,
8.6329

131.3262, 3.2086,
28.4886

■ 5.8678, 6.3952,
4.1075

145.7383, 2.7893,

0.0000, NaN, NaN

30.1678

0.0000, NaN, NaN

160.6423, 2.3325,
31.8404

0.0000, NaN, NaN

■ 56.3185, 4.7913,
18.0276

■ 56.3185, 4.7913,
18.0276

■ 53.3843, 7.7239,
20.7931

■ 59.3906, 2.1554,
14.7690

■ 50.5966, 10.9698,
23.0109

■ 62.5851, -0.1930,
11.0655

■ 47.9702, 14.5279,
24.6316

■ 65.8927, -2.2751,
6.9645

■ 45.5190, 18.3846,
25.6139

■ 69.3042, -4.1109,
2.5081

■ 43.2565, 22.5056,
25.9373

■ 72.8112, -5.7203,
-2.2667

■ 41.1921, 26.8177,
25.6534

■ 76.4062, -7.1227,
-7.3270

■ 40.6770, 27.9539,
25.5544

■ 80.0825, -8.3362,
-12.6444

■ 83.6554, -10.3702,
-15.6859

■ 86.7642, -15.2346,
-11.4529

Harmonies

Analogous

The Analogous color harmony consists of three colors that are next to each other on the color wheel.



56.3198, 13.7510, 13.5486



56.3185, 4.7913, 18.0276



56.3198, -5.6938, 18.8905

Triad

The Triadic color harmony groups three colors that are evenly spaced from another and form a triangle on the color wheel.



56.3198, 4.7891, 18.0284



56.3198, -21.5452, 0.4250



56.3198, 9.8166, -14.2106

Complementary

The Complementary color scheme is a pair of colors which are on the opposite of each other on the color wheel.



56.3185, 4.7913, 18.0276



53.6343, -6.3684, -15.9849

Split Complementary

Split-complementary colors differ from the complementary color scheme. The scheme consists of three colors, the original color and two neighbors of the complement color.



56.3198, -0.2711, -19.3199



56.3185, 4.7913, 18.0276



56.3198, -18.0111, -9.9237

Square

The Square scheme is like the rectangle color scheme, but the four colors are evenly spaced on the color wheel.



56.3198, 4.7891, 18.0284



56.3198, -20.4064, 9.8219



56.3198, -10.4029, -17.6227



56.3198, 16.7978, -4.6476

Rectangle

The Rectangle color scheme consists of four colors that form a rectangle on the color wheel.



56.3185, 4.7913, 18.0276



56.3198, -12.0552, 17.4772



56.3198, -10.4029, -17.6227



56.3198, 6.6487, -16.5784

Sweetspot

The Sweet Spot groups the original color and five complimentary colors.



56.3198, 4.7891, 18.0284



87.0026, -2.0319, 11.5487



49.1839, 25.8370, -4.1599



40.6056, -0.7784, 5.7793



96.5975, -5.1542, 5.2483



43.2801, -2.3093, 2.3515

Same Dimension

The Same Dimension uses a secret algorithm to generate beautiful new colors.



56.3198, 4.7891, 18.0284



72.5003, 9.7395, 27.4491



66.1022, -11.4549, 26.2520



31.1295, -0.8985, 3.7255



34.3741, 23.0336, 21.5844



7.3526, 2.3491, 4.5718

Inverse Universe

The Inverse Universe completely reimagines the original color for something new.



53.6343, -6.3684, -15.9849



68.1260, -8.2979, -27.9954



44.1673, 10.2426, -32.0140



30.7982, -2.2908, -0.4665



29.1053, 4.2972, -45.6555



6.4920, -0.9432, -6.0782

Previews

White Background



This preview shows how the HunterLab color 56.3185, 4.7913, 18.0276 looks on a white background.

Color Contrast Check

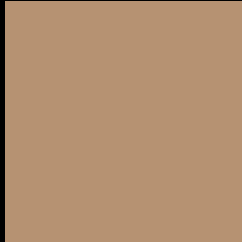
Large Text (above 18pt) WCAG AA × Fail

Any Text WCAG AA × Fail

Large Text (above 18pt) WCAG AAA × Fail

Any Text WCAG AAA × Fail

Black Background



This preview shows how the HunterLab color 56.3185, 4.7913, 18.0276 looks on a black background.

Color Contrast Check

Large Text (above 18pt) WCAG AA ✓ Pass

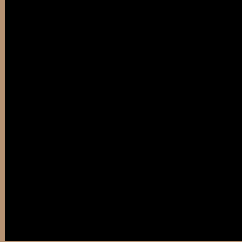
Any Text WCAG AA ✓ Pass

Large Text (above 18pt) WCAG AAA ✓ Pass

Any Text WCAG AAA ✓ Pass

If you want to check with other color combinations, try the [Color Contrast Checker](#).

HunterLab 56.3185, 4.7913, 18.0276 Background



This preview shows how black text looks on a background with the HunterLab color 56.3185, 4.7913, 18.0276.



This preview shows how white text looks on a background with the HunterLab color 56.3185, 4.7913,

Color Blindness Simulation

Color vision deficiency is a very complex topic, and I could not describe the different causes any better than Wikipedia does, so if you want to learn more, you should check out their [article about color blindness](#).

Dichromacy



Original Color

56.3185, 4.7913, 18.0276

Protanopia

56.4388, -4.8149, 17.0132

Deuteranopia

56.4855, 3.9392, 18.1651



Tritanopia

56.3523, 13.6487, 3.7087

Trichromacy



Original Color

56.3185, 4.7913, 18.0276

Protanomaly

56.2314, -1.1536, 17.2076

Deuteranomaly

56.4855, 3.9392, 18.1651

Tritanomaly

56.3863, 10.2780, 9.6420

Monochromacy



Original Color

56.3185, 4.7913, 18.0276

Achromatopsia

56.4399, -3.0115, 3.0665

Achromatomaly

56.1866, -0.2347, 8.8425

CSS Examples

Text

The CSS property to change the color of the text to HunterLab 56.3185, 4.7913, 18.0276 is called "color". The color property can be set on classes, ids or directly on the HTML element.

This example shows how text in the color `rgb(182, 146, 114)` looks like.

```
.text, #text, p{  
    color:rgb(182, 146, 114)  
}
```

If you want to add a text shadow in that color use the text-shadow property, you can generate a text shadow directly with our [CSS Text Shadow Generator](#).

Here you see how black text with a 4 pixel rgb(182, 146, 114) colored shadow looks like.

```
.shadow{ text-shadow: 4px 4px 2px rgb(182, 146, 114) }
```

Border

The CSS property to change the border of an element to HunterLab 56.3185, 4.7913, 18.0276 is called "border". The border property can be set on classes, ids or directly on the HTML element.

This example shows the color as border, it can be applied via the CSS property "border" or "border-color".

```
.border, #border, table{ border:4px solid rgb(182, 146, 114) }
```


If only the border color should be changed use the property `border-color`.

```
.border{ border-color:rgb(182, 146, 114) }
```

If you want to add a box shadow in that color use:

Here you see how a box with a 4 pixel `rgb(182, 146, 114)` colored shadow looks like.

```
.boxshadow{ -moz-box-shadow:4px 4px 4px  
4px rgb(182, 146, 114); -webkit-box-  
shadow:4px 4px 4px 4px rgb(182, 146, 114);  
box-shadow:4px 4px 4px 4px rgb(182, 146,  
114) }
```

Background

The CSS property to change the background color of an element to HunterLab 56.3185, 4.7913, 18.0276 is called "background". The background property can be set on classes, ids or directly on the HTML element.

```
.background, #background, body{  
background: rgb(182, 146, 114) }
```

If only the background color should be changed can be used:

```
.background{ background-color: rgb(182,  
146, 114) }
```

This example shows the color as background, it is applied via the CSS property "background".

To optimize and compress your CSS code, you can use our [online CSS compressor and optimizer](#) based on csstidy. If you want to create a linear or radial gradient as background or border, check our [CSS Gradient Generator](#).

Hey! You found this booklet interesting? Support Converting Colors with the new Membership Option!

The pro membership hides all ads, plus gives you double the colors in the color bucket, and more awesome pro features!

[Learn more, Memberships starting at \\$2.50/m!](#)

**Follow me
on Twitter!**

@ConvertingColor