

Converting Colors

HunterLab(56.2912, 16.8618,
7.9820)

Have a look what the booklet for
HunterLab(56.2912, 16.8618,
7.9820) contains.

HunterLab(56.3312, 17.0060, 8.0734)	3
<i>Conversions</i>	4
<i>Details</i>	6
<i>Harmonies</i>	12
<i>Previews</i>	24
<i>Color Blindness Simulation</i>	28
<i>CSS Examples</i>	31

Color

**HunterLab(56.3312, 17.0060,
8.0734)**

Conversions

Conversions Part 1

Format	Color
Hex	C38A8E
RGB	195, 138, 142
RGB Percent	76%, 54%, 56%
CMY	0.2353, 0.4588, 0.4431
CMYK	0.00, 0.29, 0.27, 0.24
HSL	356°, 32%, 65%
HSV	356°, 29%, 76%
XYZ	36.4766, 31.7320, 29.7935
YIQ	155.4990, 32.6880, 13.3280

Conversions

Conversions Part 2

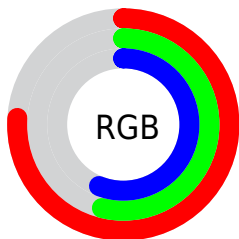
Format	Color
R _Y B	195, 138, 142
Decimal	12814990
CIE Lab	63.12, 22.31, 6.57
CIE LCh	63, 23.261, 16.416
Yxy	31.7335, 0.3722, 0.3238
Android (android.graphics.Color)	4291005070 (0xFFC38A8E)
YUV	155.4990, -6.6550, 34.6424
Hunter-Lab	56.3312, 17.0060, 8.0734

Details

The HunterLab color **56.3312, 17.0060, 8.0734** is a light color, and the websafe version is hex **CC9999**. A complement of this color would be **69.4232, -20.1816, 0.3272**, and the grayscale version is **57.4727, -3.0666, 3.1226**.

A 20% lighter version of the original color is **79.0996, 18.0099, 9.9106**, and **36.2830, 15.9828, 6.0916** is the 20% darker color. If you saturate the color by 10%, you get **51.1177, 24.6383, 9.8631**, and if you desaturate by 10%, it is **61.9920, 9.5846, 6.5001**.

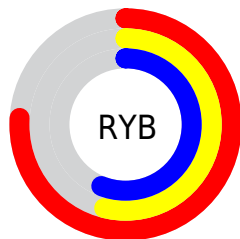
Distribution



Red (76%)

Green (54%)

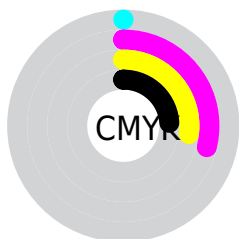
Blue (56%)



Red (76%)

Yellow (54%)

Blue (56%)

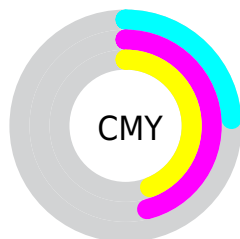


Cyan (0%)

Magenta (29%)

Yellow (27%)

Black (24%)



Cyan (24%)

Magenta (46%)

Yellow (44%)

Brightness & Saturation Gradients

These gradients show how the HunterLab color 56.3312, 17.0060, 8.0734 changes by changing the brightness by 10 percent. The first figure shows a shift by +10% for each color and the second figure -10%.

Similar to the brightness gradients but the following saturation gradients show a change of the HunterLab color 56.3312, 17.0060, 8.0734 by changing the saturation by 10% instead.

■ 56.3312, 17.0060,
8.0734

■ 56.3312, 17.0060,
8.0734

176.0408, 18.8706,
17.0967

■ 45.9979, 16.4220,
7.1516

■ 78.9893, 17.8925,
9.9606

■ 36.3862, 15.7330,
6.2384

■ 91.2393, 18.2179,
10.9273

■ 27.5567, 14.9209,
5.3292

■ 104.0642, 18.4733,
11.9110

■ 19.5860, 13.9666,
4.4143

117.4393, 18.6644,
12.9123

■ 12.5790, 12.8513,
3.4749

131.3430, 18.7959,
13.9314

■ 5.8790, 16.2357,
4.1153

145.7558, 18.8718,

0.0000, NaN, NaN

14.9684

0.0000, NaN, NaN

160.6603, 18.8957,
16.0235

0.0000, NaN, NaN

■ 56.3312, 17.0060,
8.0734

■ 56.3312, 17.0060,
8.0734

■ 51.1177, 24.6383,
9.8631

■ 61.9920, 9.5846,
6.5001

■ 46.4347, 32.3548,
11.8607

■ 68.0246, 2.4283,
5.1253

■ 42.3854, 39.8829,
14.0216

■ 74.3733, -4.4647,
3.9269

■ 39.0767, 46.7765,
16.2388

■ 80.9930, -11.1162,
2.8805

■ 36.6005, 52.4438,
18.3344

■ 87.8479, -17.5563,
1.9633

■ 34.9994, 56.3149,
20.0895

■ 94.9076, -23.8140,
1.1533

■ 34.1606, 58.3569,
21.2823

■ 95.0485, -23.0147,
-0.8496

■ 34.1071, 58.4998,
21.3387

Harmonies

Analogous

The Analogous color harmony consists of three colors that are next to each other on the color wheel.



56.3325, 17.2879, -1.4802



56.3312, 17.0060, 8.0734



56.3325, 11.1171, 14.9457

Triad

The Triadic color harmony groups three colors that are evenly spaced from another and form a triangle on the color wheel.



56.3325, 17.0037, 8.0744



56.3325, -16.4859, 14.4428



56.3325, -7.5286, -18.1786

Complementary

The Complementary color scheme is a pair of colors which are on the opposite of each other on the color wheel.



56.3312, 17.0060, 8.0734



69.4232, -20.1816, 0.3272

Split Complementary

Split-complementary colors differ from the complementary color scheme. The scheme consists of three colors, the original color and two neighbors of the complement color.



56.3325, -15.8667, -12.1417



56.3312, 17.0060, 8.0734



56.3325, -20.7850, 7.2629

Square

The Square scheme is like the rectangle color scheme, but the four colors are evenly spaced on the color wheel.



56.3325, 17.0037, 8.0744



56.3325, -8.4296, 18.1512



56.3325, -20.5667, -2.4484



56.3325, 2.6251, -17.8558

Rectangle

The Rectangle color scheme consists of four colors that form a rectangle on the color wheel.



56.3312, 17.0060, 8.0734



56.3325, 5.0307, 17.5898



56.3325, -20.5667, -2.4484



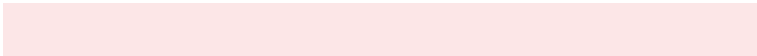
56.3325, -10.6213, -16.7856

Sweetspot

The Sweet Spot groups the original color and five complimentary colors.



56.3325, 17.0037, 8.0744



91.1101, 3.1664, 6.8439



57.5308, 24.1650, -17.3353



42.0623, 2.1356, 3.3229

0.0000, NaN, NaN



46.2646, -2.4686, 2.5136

Same Dimension

The Same Dimension uses a secret algorithm to generate beautiful new colors.



56.3325, 17.0037, 8.0744



70.9061, 29.1820, 12.2837



62.6027, 4.4135, 15.8786



31.7633, 1.1798, 2.4043



27.5055, 47.1941, 17.0751



5.7525, 9.9398, 3.0308

Inverse Universe

The Inverse Universe completely reimagines the original color for something new.



56.3325, 17.0037, 8.0744



70.9061, 29.1820, 12.2837



62.1007, -8.2375, -11.1711



31.7633, 1.1798, 2.4043



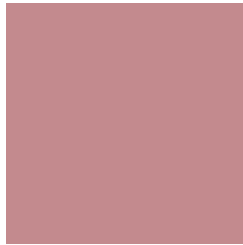
27.5055, 47.1941, 17.0751



5.7525, 9.9398, 3.0308

Previews

White Background



This preview shows how the HunterLab color 56.3312, 17.0060, 8.0734 looks on a white background.

Color Contrast Check

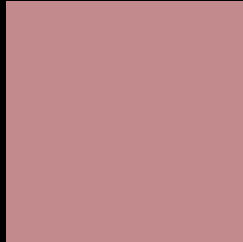
Large Text (above 18pt) WCAG AA × Fail

Any Text WCAG AA × Fail

Large Text (above 18pt) WCAG AAA × Fail

Any Text WCAG AAA × Fail

Black Background



This preview shows how the HunterLab color 56.3312, 17.0060, 8.0734 looks on a black background.

Color Contrast Check

Large Text (above 18pt) WCAG AA ✓ Pass

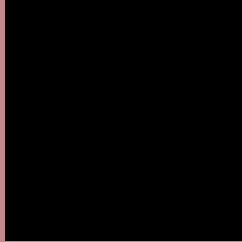
Any Text WCAG AA ✓ Pass

Large Text (above 18pt) WCAG AAA ✓ Pass

Any Text WCAG AAA ✓ Pass

If you want to check with other color combinations, try the [Color Contrast Checker](#).

HunterLab 56.3312, 17.0060, 8.0734 Background



This preview shows how black text looks on a background with the HunterLab color 56.3312, 17.0060, 8.0734.



This preview shows how white text looks on a background with the HunterLab color 56.3312, 17.0060,

Color Blindness Simulation

Color vision deficiency is a very complex topic, and I could not describe the different causes any better than Wikipedia does, so if you want to learn more, you should check out their [article about color blindness](#).

Dichromacy



Original Color

56.3312, 17.0060, 8.0734

Protanopia

56.4151, -1.7866, 4.4068

Deuteranopia

56.5310, 3.8719, 8.8800



Tritanopia

56.3606, 18.7288, 5.5839

Trichromacy



Original Color

56.3312, 17.0060, 8.0734

Protanomaly

56.2423, 4.7069, 5.6391

Deuteranomaly

56.2969, 8.7673, 8.3043

Tritanomaly

56.3049, 18.4449, 6.3818

Monochromacy



Original Color

56.3312, 17.0060, 8.0734

Achromatopsia

57.6586, -3.0765, 3.1327

Achromatomaly

56.8114, 3.9855, 4.5211

CSS Examples

Text

The CSS property to change the color of the text to HunterLab 56.3312, 17.0060, 8.0734 is called "color". The color property can be set on classes, ids or directly on the HTML element.

This example shows how text in the color `rgb(195, 138, 142)` looks like.

```
.text, #text, p{  
    color:rgb(195, 138, 142)  
}
```

If you want to add a text shadow in that color use the text-shadow property, you can generate a text shadow directly with our [CSS Text Shadow Generator](#).

Here you see how black text with a 4 pixel rgb(195, 138, 142) colored shadow looks like.

```
.shadow{ text-shadow: 4px 4px 2px rgb(195, 138, 142) }
```

Border

The CSS property to change the border of an element to HunterLab 56.3312, 17.0060, 8.0734 is called "border". The border property can be set on classes, ids or directly on the HTML element.

This example shows the color as border, it can be applied via the CSS property "border" or "border-color".

```
.border, #border, table{ border:4px solid rgb(195, 138, 142) }
```


If only the border color should be changed use the property border-color.

```
.border{ border-color:rgb(195, 138, 142) }
```

If you want to add a box shadow in that color use:

Here you see how a box with a 4 pixel rgb(195, 138, 142) colored shadow looks like.

```
.boxshadow{ -moz-box-shadow:4px 4px 4px  
4px rgb(195, 138, 142); -webkit-box-  
shadow:4px 4px 4px 4px rgb(195, 138, 142);  
box-shadow:4px 4px 4px 4px rgb(195, 138,  
142) }
```

Background

The CSS property to change the background color of an element to HunterLab 56.3312, 17.0060, 8.0734 is called "background". The background property can be set on classes, ids or directly on the HTML element.

```
.background, #background, body{  
background: rgb(195, 138, 142) }
```

If only the background color should be changed can be used:

```
.background{ background-color: rgb(195,  
138, 142) }
```

This example shows the color as background, it is applied via the CSS property "background".

To optimize and compress your CSS code, you can use our [online CSS compressor and optimizer](#) based on csstidy. If you want to create a linear or radial gradient as background or border, check our [CSS Gradient Generator](#).

Hey! You found this booklet interesting? Support Converting Colors with the new Membership Option!

The pro membership hides all ads, plus gives you double the colors in the color bucket, and more awesome pro features!

[Learn more, Memberships starting at \\$2.50/m!](#)

**Follow me
on Twitter!**

@ConvertingColor