

Converting Colors

HunterLab(56.3215, 12.5677,
6.3241)

Have a look what the booklet for
HunterLab(56.3215, 12.5677,
6.3241) contains.

HunterLab(56.1820, 12.7646, 6.1440)	3
<i>Conversions</i>	4
<i>Details</i>	6
<i>Harmonies</i>	12
<i>Previews</i>	24
<i>Color Blindness Simulation</i>	28
<i>CSS Examples</i>	31

Color

**HunterLab(56.1820, 12.7646,
6.1440)**

Conversions

Conversions Part 1

Format	Color
Hex	BA8D92
RGB	186, 141, 146
RGB Percent	73%, 55%, 57%
CMY	0.2706, 0.4470, 0.4274
CMYK	0.00, 0.24, 0.22, 0.27
HSL	353°, 25%, 64%
HSV	353°, 24%, 73%
XYZ	34.9629, 31.5642, 31.4439
YIQ	155.0250, 25.2150, 11.0950

Conversions

Conversions Part 2

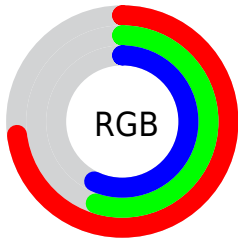
Format	Color
R _Y B	186, 141, 146
Decimal	12225938
CIE Lab	62.98, 17.82, 3.98
CIE LCh	63, 18.256, 12.586
Yxy	31.5656, 0.3569, 0.3222
Android (android.graphics.Color)	4290416018 (0xFFBA8D92)
YUV	155.0250, -4.4493, 27.1651
Hunter-Lab	56.1820, 12.7646, 6.1440

Details

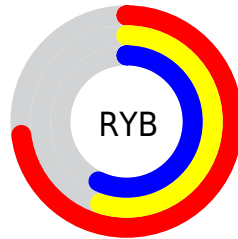
The HunterLab color **56.1820, 12.7646, 6.1440** is a light color, and the websafe version is hex **CC9999**. A complement of this color would be **66.4209, -17.1113, 1.6042**, and the grayscale version is **57.2734, -3.0560, 3.1118**.

A 20% lighter version of the original color is **78.9019, 13.2757, 7.7900**, and **36.3761, 11.7541, 4.5834** is the 20% darker color. If you saturate the color by 10%, you get **51.0443, 19.9618, 7.4896**, and if you desaturate by 10%, it is **61.7022, 5.7753, 5.0352**.

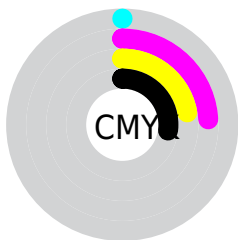
Distribution



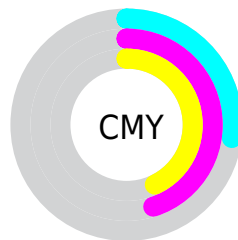
- Red (73%)
- Green (55%)
- Blue (57%)



- Red (73%)
- Yellow (55%)
- Blue (57%)



- Cyan (0%)
- Magenta (24%)
- Yellow (22%)
- Black (27%)



- Cyan (27%)
- Magenta (45%)
- Yellow (43%)

Brightness & Saturation Gradients

These gradients show how the HunterLab color 56.1820, 12.7646, 6.1440 changes by changing the brightness by 10 percent. The first figure shows a shift by +10% for each color and the second figure -10%.

Similar to the brightness gradients but the following saturation gradients show a change of the HunterLab color 56.1820, 12.7646, 6.1440 by changing the saturation by 10% instead.

■ 56.1820, 12.7646,
6.1440

■ 56.1820, 12.7646,
6.1440

175.8226, 13.0404,
14.1568

■ 45.8584, 12.3924,
5.3686

■ 78.8223, 13.2539,
7.7667

■ 36.2573, 11.9245,
4.6145

■ 91.0640, 13.3919,
8.6123

■ 27.4392, 11.3432,
3.8808

■ 103.8810, 13.4665,
9.4808

■ 19.4811, 10.6283,
3.1640

117.2487, 13.4828,
10.3721

■ 12.4885, 9.7536,
2.4561

131.1451, 13.4450,
11.2856

■ 5.7459, 13.2055,
3.1827

145.5509, 13.3567,

0.0000, NaN, NaN

12.2212

0.0000, NaN, NaN

160.4486, 13.2209,
13.1784

0.0000, NaN, NaN

■ 56.1820, 12.7646,
6.1440

■ 56.1820, 12.7646,
6.1440

■ 51.0443, 19.9618,
7.4896

■ 61.7022, 5.7753,
5.0352

■ 46.3586, 27.2896,
9.0888

■ 67.5418, -0.9772,
4.1317

■ 42.2141, 34.5600,
10.9394

■ 73.6550, -7.5036,
3.4049

■ 38.7088, 41.4396,
12.9938

■ 80.0043, -13.8267,
2.8276

■ 35.9388, 47.4357,
15.1381

■ 86.5601, -19.9739,
2.3764

■ 33.9726, 51.9798,
17.1883

■ 93.2983, -25.9724,
2.0316

■ 32.8163, 54.6491,
18.9273

■ 94.4347, -25.2733,
-1.6509

■ 32.3914, 55.6344,
19.6653

Harmonies

Analogous

The Analogous color harmony consists of three colors that are next to each other on the color wheel.



56.1833, 12.3927, -1.4850



56.1820, 12.7646, 6.1440



56.1833, 8.7413, 12.0612

Triad

The Triadic color harmony groups three colors that are evenly spaced from another and form a triangle on the color wheel.



56.1833, 12.7625, 6.1450



56.1833, -13.0059, 12.7733



56.1833, -7.5169, -12.7173

Complementary

The Complementary color scheme is a pair of colors which are on the opposite of each other on the color wheel.



56.1820, 12.7646, 6.1440



66.4209, -17.1113, 1.6042

Split Complementary

Split-complementary colors differ from the complementary color scheme. The scheme consists of three colors, the original color and two neighbors of the complement color.



56.1833, -13.8514, -7.7358



56.1820, 12.7646, 6.1440



56.1833, -16.8969, 7.2511

Square

The Square scheme is like the rectangle color scheme, but the four colors are evenly spaced on the color wheel.



56.1833, 12.7625, 6.1450



56.1833, -6.3035, 15.5137



56.1833, -17.1976, -0.2143



56.1833, 0.3800, -13.1230

Rectangle

The Rectangle color scheme consists of four colors that form a rectangle on the color wheel.



56.1820, 12.7646, 6.1440



56.1833, 4.2354, 14.5277



56.1833, -17.1976, -0.2143



56.1833, -9.8883, -11.4936

Sweetspot

The Sweet Spot groups the original color and five complimentary colors.



56.1833, 12.7625, 6.1450



88.5923, 1.3107, 5.8920



56.9122, 17.6621, -13.0172



41.3495, 0.8707, 2.7980



97.7295, -5.2146, 5.3098



44.2712, -2.3622, 2.4053

Same Dimension

The Same Dimension uses a secret algorithm to generate beautiful new colors.



56.1833, 12.7625, 6.1450



71.9115, 22.2775, 9.1889



60.7474, 3.3762, 12.8949



30.0466, 1.1471, 2.1297



26.5790, 45.6729, 15.9694



5.0439, 8.7731, 2.2102

Inverse Universe

The Inverse Universe completely reimagines the original color for something new.



56.1833, 12.7625, 6.1450



71.9115, 22.2775, 9.1889



61.2307, -8.0657, -7.3932



30.0466, 1.1471, 2.1297



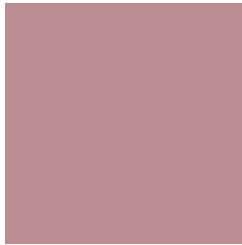
26.5790, 45.6729, 15.9694



5.0439, 8.7731, 2.2102

Previews

White Background



This preview shows how the HunterLab color 56.1820, 12.7646, 6.1440 looks on a white background.

Color Contrast Check

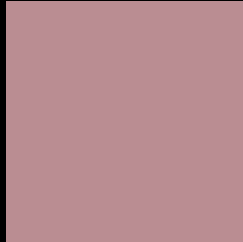
Large Text (above 18pt) WCAG AA × Fail

Any Text WCAG AA × Fail

Large Text (above 18pt) WCAG AAA × Fail

Any Text WCAG AAA × Fail

Black Background



This preview shows how the HunterLab color 56.1820, 12.7646, 6.1440 looks on a black background.

Color Contrast Check

Large Text (above 18pt) WCAG AA ✓ Pass

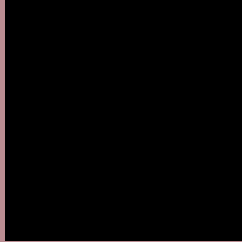
Any Text WCAG AA ✓ Pass

Large Text (above 18pt) WCAG AAA ✓ Pass

Any Text WCAG AAA ✓ Pass

If you want to check with other color combinations, try the [Color Contrast Checker](#).

HunterLab 56.1820, 12.7646, 6.1440 Background



This preview shows how black text looks on a background with the HunterLab color 56.1820, 12.7646, 6.1440.



This preview shows how white text looks on a background with the HunterLab color 56.1820, 12.7646,

Color Blindness Simulation

Color vision deficiency is a very complex topic, and I could not describe the different causes any better than Wikipedia does, so if you want to learn more, you should check out their [article about color blindness](#).

Dichromacy



Original Color

56.1820, 12.7646, 6.1440

Protanopia

56.2957, -2.0842, 3.3669

Deuteranopia

56.0873, 4.0772, 6.3144



Tritanopia

56.1741, 14.3658, 3.9636

Trichromacy



Original Color

56.1820, 12.7646, 6.1440

Protanomaly

56.1149, 3.0201, 4.1438

Deuteranomaly

56.1473, 7.1010, 6.4346

Tritanomaly

56.1167, 14.0690, 4.7835

Monochromacy



Original Color

56.1820, 12.7646, 6.1440

Achromatopsia

57.2519, -3.0548, 3.1106

Achromatomaly

56.7333, 2.3413, 3.9553

CSS Examples

Text

The CSS property to change the color of the text to HunterLab 56.1820, 12.7646, 6.1440 is called "color". The color property can be set on classes, ids or directly on the HTML element.

This example shows how text in the color `rgb(186, 141, 146)` looks like.

```
.text, #text, p{  
    color:rgb(186, 141, 146)  
}
```

If you want to add a text shadow in that color use the text-shadow property, you can generate a text shadow directly with our [CSS Text Shadow Generator](#).

Here you see how black text with a 4 pixel rgb(186, 141, 146) colored shadow looks like.

```
.shadow{ text-shadow: 4px 4px 2px rgb(186, 141, 146) }
```

Border

The CSS property to change the border of an element to HunterLab 56.1820, 12.7646, 6.1440 is called "border". The border property can be set on classes, ids or directly on the HTML element.

This example shows the color as border, it can be applied via the CSS property "border" or "border-color".

```
.border, #border, table{ border:4px solid rgb(186, 141, 146) }
```


If only the border color should be changed use the property `border-color`.

```
.border{ border-color:rgb(186, 141, 146) }
```

If you want to add a box shadow in that color use:

Here you see how a box with a 4 pixel `rgb(186, 141, 146)` colored shadow looks like.

```
.boxshadow{ -moz-box-shadow:4px 4px 4px  
4px rgb(186, 141, 146); -webkit-box-  
shadow:4px 4px 4px 4px rgb(186, 141, 146);  
box-shadow:4px 4px 4px 4px rgb(186, 141,  
146) }
```

Background

The CSS property to change the background color of an element to HunterLab 56.1820, 12.7646, 6.1440 is called "background". The background property can be set on classes, ids or directly on the HTML element.

```
.background, #background, body{  
background: rgb(186, 141, 146) }
```

If only the background color should be changed can be used:

```
.background{ background-color: rgb(186,  
141, 146) }
```

This example shows the color as background, it is applied via the CSS property "background".

To optimize and compress your CSS code, you can use our [online CSS compressor and optimizer](#) based on csstidy. If you want to create a linear or radial gradient as background or border, check our [CSS Gradient Generator](#).

Hey! You found this booklet interesting? Support Converting Colors with the new Membership Option!

The pro membership hides all ads, plus gives you double the colors in the color bucket, and more awesome pro features!

[Learn more, Memberships starting at \\$2.50/m!](#)

**Follow me
on Twitter!**

@ConvertingColor