

Converting Colors

HunterLab(56.5538, 2.9316,
15.3494)

Have a look what the booklet for
HunterLab(56.5538, 2.9316,
15.3494) contains.

HunterLab(56.5305, 3.0507, 15.2336)	3
<i>Conversions</i>	4
<i>Details</i>	6
<i>Harmonies</i>	12
<i>Previews</i>	24
<i>Color Blindness Simulation</i>	28
<i>CSS Examples</i>	31

Color

**HunterLab(56.5305, 3.0507,
15.2336)**

Conversions

Conversions Part 1

Format	Color
Hex	B1947B
RGB	177, 148, 123
RGB Percent	69%, 58%, 48%
CMY	0.3059, 0.4196, 0.5176
CMYK	0.00, 0.16, 0.31, 0.31
HSL	28°, 26%, 59%
HSV	28°, 31%, 69%
XYZ	32.2965, 31.9570, 23.2050
YIQ	153.8210, 25.3090, -1.6270

Conversions

Conversions Part 2

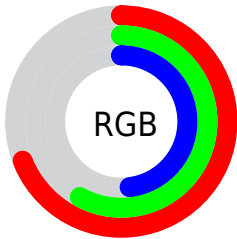
Format	Color
RYB	177, 170, 123
Decimal	11637883
CIELab	63.31, 7.06, 17.27
CIELCh	63, 18.662, 67.763
Yxy	31.9584, 0.3693, 0.3654
Android (android.graphics.Color)	4289827963 (0xFFB1947B)
YUV	153.8210, -15.1948, 20.3280
Hunter-Lab	56.5305, 3.0507, 15.2336

Details

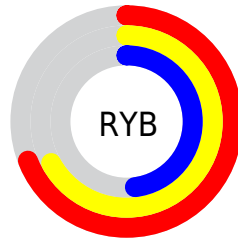
The HunterLab color $56.5305, 3.0507, 15.2336$ is a light color, and the websafe version is hex $CC9999$. A complement of this color would be $54.6268, -6.2857, -11.5951$, and the grayscale version is $56.8265, -3.0321, 3.0875$.

A 20% lighter version of the original color is $79.1829, 2.4603, 18.0799$, and $36.4071, 3.3548, 11.9421$ is the 20% darker color. If you saturate the color by 10%, you get $53.5669, 5.7508, 18.2258$, and if you desaturate by 10%, it is $59.6220, 0.6271, 11.8065$.

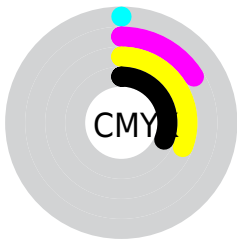
Distribution



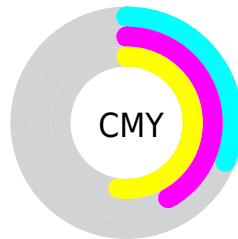
- Red (69%)
- Green (58%)
- Blue (48%)



- Red (69%)
- Yellow (67%)
- Blue (48%)



- Cyan (0%)
- Magenta (16%)
- Yellow (31%)
- Black (31%)



- Cyan (31%)
- Magenta (42%)
- Yellow (52%)

Brightness & Saturation Gradients

These gradients show how the HunterLab color 56.5305, 3.0507, 15.2336 changes by changing the brightness by 10 percent. The first figure shows a shift by +10% for each color and the second figure -10%.

Similar to the brightness gradients but the following saturation gradients show a change of the HunterLab color 56.5305, 3.0507, 15.2336 by changing the saturation by 10% instead.

■ 56.5305, 3.0507,
15.2336

■ 56.5305, 3.0507,
15.2336

176.3321, -0.6483,
28.6342

■ 46.1842, 3.2227,
13.6645

■ 79.2123, 2.5314,
18.2797

■ 36.5585, 3.3313,
12.0438

■ 91.4732, 2.1982,
19.7737

■ 27.7138, 3.3644,
10.3484

■ 104.3086, 1.8204,
21.2570

■ 19.7262, 3.3083,
8.5400

117.6938, 1.4008,
22.7339

■ 12.7000, 3.1411,
7.0387

131.6072, 0.9422,
24.2077

■ 6.0521, 4.7617,
4.2364

146.0293, 0.4466,

0.0000, NaN, NaN

25.6810

0.0000, NaN, NaN

160.9428, -0.0841,
27.1560

0.0000, NaN, NaN

■ 56.5305, 3.0507,
15.2336

■ 56.5305, 3.0507,
15.2336

■ 53.5669, 5.7508,
18.2258

■ 59.6220, 0.6271,
11.8065

■ 50.7391, 8.7473,
20.7308

■ 62.8266, -1.5317,
7.9886

■ 48.0614, 12.0454,
22.6982

■ 66.1360, -3.4468,
3.8227

■ 45.5477, 15.6415,
24.0801

■ 69.5416, -5.1380,
-0.6541

■ 43.2120, 19.5159,
24.8398

■ 73.0356, -6.6243,
-5.4092

■ 41.0676, 23.6258,
24.9654

■ 76.6112, -7.9237,
-10.4142

■ 39.2112, 27.6405,
24.6457

■ 80.2626, -9.0530,
-15.6446

■ 83.6059, -12.1296,
-15.7868

■ 86.6910, -16.8946,
-11.5817

Harmonies

Analogous

The Analogous color harmony consists of three colors that are next to each other on the color wheel.



56.5318, 9.9419, 11.4842



56.5305, 3.0507, 15.2336



56.5318, -5.1254, 15.9706

Triad

The Triadic color harmony groups three colors that are evenly spaced from another and form a triangle on the color wheel.



56.5318, 3.0487, 15.2344



56.5318, -17.7564, 1.0215



56.5318, 6.9249, -10.0558

Complementary

The Complementary color scheme is a pair of colors which are on the opposite of each other on the color wheel.



56.5305, 3.0507, 15.2336



54.6268, -6.2857, -11.5951

Split Complementary

Split-complementary colors differ from the complementary color scheme. The scheme consists of three colors, the original color and two neighbors of the complement color.



56.5318, -0.8821, -13.8204



56.5305, 3.0507, 15.2336



56.5318, -14.9089, -6.8593

Square

The Square scheme is like the rectangle color scheme, but the four colors are evenly spaced on the color wheel.



56.5318, 3.0487, 15.2344



56.5318, -16.8364, 8.4449



56.5318, -8.8419, -12.5744



56.5318, 12.2669, -2.8747

Rectangle

The Rectangle color scheme consists of four colors that form a rectangle on the color wheel.



56.5305, 3.0507, 15.2336



56.5318, -10.1517, 14.7668



56.5318, -8.8419, -12.5744



56.5318, 4.4849, -11.8060

Sweetspot

The Sweet Spot groups the original color and five complimentary colors.



56.5318, 3.0487, 15.2344



84.6707, -2.4153, 9.9621



50.7971, 19.8267, -3.3766



39.1267, -0.9453, 4.9946



94.3401, -5.0338, 5.1257



41.3092, -2.2042, 2.2444

Same Dimension

The Same Dimension uses a secret algorithm to generate beautiful new colors.



56.5318, 3.0487, 15.2344



72.8099, 6.6165, 23.3035



64.1603, -9.6189, 22.0500



30.2195, -0.8463, 3.5922



33.5544, 23.0983, 21.0804



6.8657, 2.0890, 4.2672

Inverse Universe

The Inverse Universe completely reimagines the original color for something new.



54.6268, -6.2857, -11.5951



69.6942, -8.5820, -20.5793



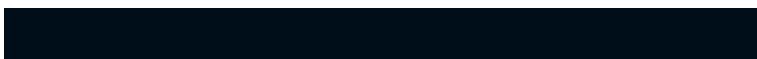
47.1496, 6.5578, -23.1372



29.9343, -2.2524, -0.4229



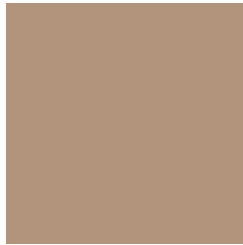
28.9103, 3.6099, -43.9281



6.1501, -1.0731, -5.3706

Previews

White Background



This preview shows how the HunterLab color 56.5305, 3.0507, 15.2336 looks on a white background.

Color Contrast Check

Large Text (above 18pt) WCAG AA × Fail

Any Text WCAG AA × Fail

Large Text (above 18pt) WCAG AAA × Fail

Any Text WCAG AAA × Fail

Black Background



This preview shows how the HunterLab color 56.5305, 3.0507, 15.2336 looks on a black background.

Color Contrast Check

Large Text (above 18pt) WCAG AA ✓ Pass

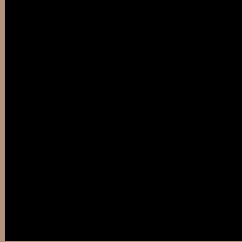
Any Text WCAG AA ✓ Pass

Large Text (above 18pt) WCAG AAA ✓ Pass

Any Text WCAG AAA ✓ Pass

If you want to check with other color combinations, try the [Color Contrast Checker](#).

HunterLab 56.5305, 3.0507, 15.2336 Background



This preview shows how black text looks on a background with the HunterLab color 56.5305, 3.0507, 15.2336.



This preview shows how white text looks on a background with the HunterLab color 56.5305, 3.0507,

Color Blindness Simulation

Color vision deficiency is a very complex topic, and I could not describe the different causes any better than Wikipedia does, so if you want to learn more, you should check out their [article about color blindness](#).

Dichromacy



Original Color

56.5305, 3.0507, 15.2336

Protanopia

56.5195, -4.1845, 14.4007

Deuteranopia

56.4634, 4.2463, 15.1899



Tritanopia

56.6894, 10.8285, 2.6883

Trichromacy



Original Color

56.5305, 3.0507, 15.2336

Protanomaly

56.3950, -1.7069, 14.6728

Deuteranomaly

56.3582, 3.8934, 15.0821

Tritanomaly

56.5131, 8.1954, 7.7030

Monochromacy



Original Color

56.5305, 3.0507, 15.2336

Achromatopsia

56.8457, -3.0331, 3.0885

Achromatomaly

56.6754, -1.2748, 7.7154

CSS Examples

Text

The CSS property to change the color of the text to HunterLab 56.5305, 3.0507, 15.2336 is called "color". The color property can be set on classes, ids or directly on the HTML element.

This example shows how text in the color `rgb(177, 148, 123)` looks like.

```
.text, #text, p{  
    color:rgb(177, 148, 123)  
}
```

If you want to add a text shadow in that color use the text-shadow property, you can generate a text shadow directly with our [CSS Text Shadow Generator](#).

Here you see how black text with a 4 pixel rgb(177, 148, 123) colored shadow looks like.

```
.shadow{ text-shadow: 4px 4px 2px rgb(177, 148, 123) }
```

Border

The CSS property to change the border of an element to HunterLab 56.5305, 3.0507, 15.2336 is called "border". The border property can be set on classes, ids or directly on the HTML element.

This example shows the color as border, it can be applied via the CSS property "border" or "border-color".

```
.border, #border, table{ border:4px solid rgb(177, 148, 123) }
```


If only the border color should be changed use the property `border-color`.

```
.border{ border-color:rgb(177, 148, 123) }
```

If you want to add a box shadow in that color use:

Here you see how a box with a 4 pixel `rgb(177, 148, 123)` colored shadow looks like.

```
.boxshadow{ -moz-box-shadow:4px 4px 4px  
4px rgb(177, 148, 123); -webkit-box-  
shadow:4px 4px 4px 4px rgb(177, 148, 123);  
box-shadow:4px 4px 4px 4px rgb(177, 148,  
123) }
```

Background

The CSS property to change the background color of an element to HunterLab 56.5305, 3.0507, 15.2336 is called "background". The background property can be set on classes, ids or directly on the HTML element.

```
.background, #background, body{  
background: rgb(177, 148, 123) }
```

If only the background color should be changed can be used:

```
.background{ background-color: rgb(177,  
148, 123) }
```

This example shows the color as background, it is applied via the CSS property "background".

To optimize and compress your CSS code, you can use our [online CSS compressor and optimizer](#) based on csstidy. If you want to create a linear or radial gradient as background or border, check our [CSS Gradient Generator](#).

Hey! You found this booklet interesting? Support Converting Colors with the new Membership Option!

The pro membership hides all ads, plus gives you double the colors in the color bucket, and more awesome pro features!

[Learn more, Memberships starting at \\$2.50/m!](#)

**Follow me
on Twitter!**

@ConvertingColor