

Converting Colors

HunterLab(56.5551, 37.9371,
6.6187)

Have a look what the booklet for
HunterLab(56.5551, 37.9371,
6.6187) contains.

HunterLab(56.5244, 38.3507, 6.5471)	3
<i>Conversions</i>	4
<i>Details</i>	6
<i>Harmonies</i>	12
<i>Previews</i>	24
<i>Color Blindness Simulation</i>	28
<i>CSS Examples</i>	31

Color

**HunterLab(56.5244, 38.3507,
6.5471)**

Conversions

Conversions Part 1

Format	Color
Hex	E27993
RGB	226, 121, 147
RGB Percent	89%, 47%, 58%
CMY	0.1137, 0.5255, 0.4235
CMYK	0.00, 0.46, 0.35, 0.11
HSL	345°, 64%, 68%
HSV	345°, 46%, 89%
XYZ	43.4679, 31.9501, 31.4798
YIQ	155.3590, 54.2340, 30.3460

Conversions

Conversions Part 2

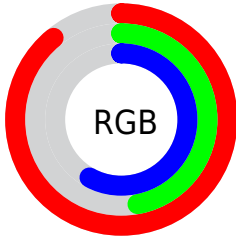
Format	Color
RYB	226, 121, 147
Decimal	14842259
CIELab	63.30, 43.40, 4.48
CIElCh	63, 43.634, 5.894
Yxy	31.9517, 0.4066, 0.2989
Android (android.graphics.Color)	4293032339 (0xFFE27993)
YUV	155.3590, -4.1210, 61.9522
Hunter-Lab	56.5244, 38.3507, 6.5471

Details

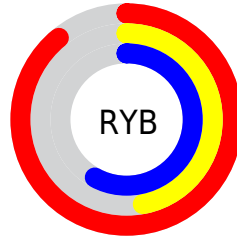
The HunterLab color $56.5244, 38.3507, 6.5471$ is a light color, and the websafe version is hex $CC6699$. A complement of this color would be $79.1382, -35.8455, 7.1957$, and the grayscale version is $57.3999, -3.0627, 3.1186$.

A 20% lighter version of the original color is $74.9246, 28.7706, 2.9444$, and $36.6663, 35.3128, 4.9245$ is the 20% darker color. If you saturate the color by 10%, you get $51.5674, 47.5203, 8.3272$, and if you desaturate by 10%, it is $62.1907, 28.8763, 5.3408$.

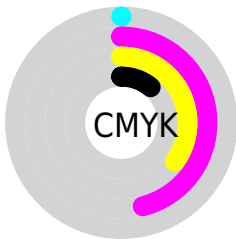
Distribution



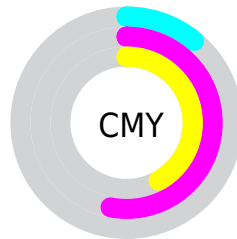
- Red (89%)
- Green (47%)
- Blue (58%)



- Red (89%)
- Yellow (47%)
- Blue (58%)



- Cyan (0%)
- Magenta (46%)
- Yellow (35%)
- Black (11%)



- Cyan (11%)
- Magenta (53%)
- Yellow (42%)

Brightness & Saturation Gradients

These gradients show how the HunterLab color 56.5244, 38.3507, 6.5471 changes by changing the brightness by 10 percent. The first figure shows a shift by +10% for each color and the second figure -10%.

Similar to the brightness gradients but the following saturation gradients show a change of the HunterLab color 56.5244, 38.3507, 6.5471 by changing the saturation by 10% instead.

■ 56.5244, 38.3507,
6.5471

■ 56.5244, 38.3507,
6.5471

176.3233, 47.1973,
14.7598

■ 46.1786, 36.8867,
5.7433

■ 79.2056, 40.9344,
8.2219

■ 36.5534, 35.3063,
4.9582

■ 91.4662, 42.0756,
9.0914

■ 27.7091, 33.6081,
4.1906

■ 104.3013, 43.1249,
9.9827

■ 19.7220, 31.8164,
3.4359

117.6862, 44.0888,
10.8957

■ 12.6964, 30.0335,
2.6843

131.5992, 44.9731,
11.8302

■ 6.0469, 34.9683,
3.4008

146.0211, 45.7830,

0.0000, INF, NaN

12.7859

0.0000, NaN, NaN

160.9343, 46.5231,
13.7625

0.0000, NaN, NaN

■ 56.5244, 38.3507,
6.5471

■ 56.5244, 38.3507,
6.5471

■ 51.5674, 47.5203,
8.3272

■ 62.1907, 28.8763,
5.3408

■ 47.4374, 55.8915,
10.6861

■ 68.4492, 19.4152,
4.6468

■ 44.2472, 62.7839,
13.5397

■ 75.2055, 10.1233,
4.3917

■ 42.0625, 67.5120,
16.6787

■ 82.3813, 1.0652,
4.5025

■ 40.8535, 69.7203,
19.7849

■ 89.9142, -7.7479,
4.9155

■ 40.5633, 70.1687,
20.7634

■ 97.2266, -15.5119,
4.9717

■ 97.4211, -14.4267,
2.2001

Harmonies

Analogous

The Analogous color harmony consists of three colors that are next to each other on the color wheel.



56.5258, 34.5618, -13.1324



56.5244, 38.3507, 6.5471



56.5258, 29.9151, 19.9663

Triad

The Triadic color harmony groups three colors that are evenly spaced from another and form a triangle on the color wheel.



56.5258, 38.3475, 6.5483



56.5258, -22.9799, 24.6924



56.5258, -17.2503, -39.0041

Complementary

The Complementary color scheme is a pair of colors which are on the opposite of each other on the color wheel.



56.5244, 38.3507, 6.5471



79.1382, -35.8455, 7.1957

Split Complementary

Split-complementary colors differ from the complementary color scheme. The scheme consists of three colors, the original color and two neighbors of the complement color.



56.5258, -29.8001, -21.4774



56.5244, 38.3507, 6.5471



56.5258, -32.7878, 15.5666

Square

The Square scheme is like the rectangle color scheme, but the four colors are evenly spaced on the color wheel.



56.5258, 38.3475, 6.5483



56.5258, -6.7414, 27.9641



56.5258, -35.1084, -0.6297



56.5258, 0.8021, -43.8736

Rectangle

The Rectangle color scheme consists of four colors that form a rectangle on the color wheel.



56.5244, 38.3507, 6.5471



56.5258, 19.0830, 25.0337



56.5258, -35.1084, -0.6297



56.5258, -22.1732, -34.1675

Sweetspot

The Sweet Spot groups the original color and five complimentary colors.



56.5258, 38.3475, 6.5483



88.1413, 9.1277, 5.0310



56.0468, 43.0660, -40.8253



39.9681, 5.2772, 2.3292

0.0000, NaN, NaN



46.2646, -2.4686, 2.5136

Same Dimension

The Same Dimension uses a secret algorithm to generate beautiful new colors.



56.5258, 38.3475, 6.5483



59.1748, 54.4065, 9.5290



62.0453, 21.7141, 21.3243



37.0890, 1.7303, 2.0510



30.6641, 53.0955, 15.3003



8.1603, 14.2999, 2.7526

Inverse Universe

The Inverse Universe completely reimagines the original color for something new.



56.5258, 38.3475, 6.5483



59.1748, 54.4065, 9.5290



71.2390, -18.9041, -16.3168



37.0890, 1.7303, 2.0510



30.6641, 53.0955, 15.3003



8.1603, 14.2999, 2.7526

Previews

White Background



This preview shows how the HunterLab color 56.5244, 38.3507, 6.5471 looks on a white background.

Color Contrast Check

Large Text (above 18pt) WCAG AA × Fail

Any Text WCAG AA × Fail

Large Text (above 18pt) WCAG AAA × Fail

Any Text WCAG AAA × Fail

Black Background



This preview shows how the HunterLab color 56.5244, 38.3507, 6.5471 looks on a black background.

Color Contrast Check

Large Text (above 18pt) WCAG AA ✓ Pass

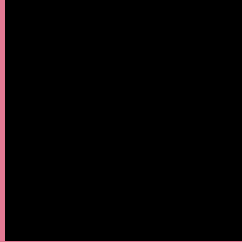
Any Text WCAG AA ✓ Pass

Large Text (above 18pt) WCAG AAA ✓ Pass

Any Text WCAG AAA ✓ Pass

If you want to check with other color combinations, try the [Color Contrast Checker](#).

HunterLab 56.5244, 38.3507, 6.5471 Background



This preview shows how black text looks on a background with the HunterLab color 56.5244, 38.3507, 6.5471.



This preview shows how white text looks on a background with the HunterLab color 56.5244, 38.3507,

6.5471.

Color Blindness Simulation

Color vision deficiency is a very complex topic, and I could not describe the different causes any better than Wikipedia does, so if you want to learn more, you should check out their [article about color blindness](#).

Dichromacy



Original Color

56.5244, 38.3507, 6.5471

Protanopia

56.8079, -1.0023, -2.1654

Deuteranopia

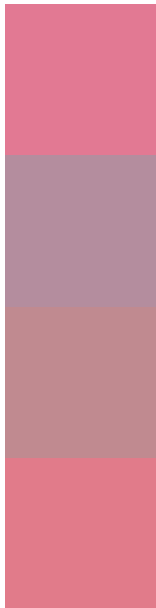
56.5836, 4.1537, 8.1241



Tritanopia

56.6713, 34.6662, 12.3118

Trichromacy



Original Color

56.5244, 38.3507, 6.5471

Protanomaly

55.8764, 12.4886, 0.3254

Deuteranomaly

56.0331, 16.1808, 6.8914

Tritanomaly

56.5760, 35.7811, 10.2901

Monochromacy



Original Color

56.5244, 38.3507, 6.5471

Achromatopsia

57.2519, -3.0548, 3.1106

Achromatomaly

56.3344, 10.8765, 3.6392

CSS Examples

Text

The CSS property to change the color of the text to HunterLab 56.5244, 38.3507, 6.5471 is called "color". The color property can be set on classes, ids or directly on the HTML element.

This example shows how text in the color `rgb(226, 121, 147)` looks like.

```
.text, #text, p{  
    color:rgb(226, 121, 147)  
}
```

If you want to add a text shadow in that color use the text-shadow property, you can generate a text shadow directly with our [CSS Text Shadow Generator](#).

Here you see how black text with a 4 pixel rgb(226, 121, 147) colored shadow looks like.

```
.shadow{ text-shadow: 4px 4px 2px rgb(226, 121, 147) }
```

Border

The CSS property to change the border of an element to HunterLab 56.5244, 38.3507, 6.5471 is called "border". The border property can be set on classes, ids or directly on the HTML element.

This example shows the color as border, it can be applied via the CSS property "border" or "border-color".

```
.border, #border, table{ border:4px solid rgb(226, 121, 147) }
```


If only the border color should be changed use the property border-color.

```
.border{ border-color:rgb(226, 121, 147) }
```

If you want to add a box shadow in that color use:

Here you see how a box with a 4 pixel rgb(226, 121, 147) colored shadow looks like.

```
.boxshadow{ -moz-box-shadow:4px 4px 4px  
4px rgb(226, 121, 147); -webkit-box-  
shadow:4px 4px 4px 4px rgb(226, 121, 147);  
box-shadow:4px 4px 4px 4px rgb(226, 121,  
147) }
```

Background

The CSS property to change the background color of an element to HunterLab 56.5244, 38.3507, 6.5471 is called "background". The background property can be set on classes, ids or directly on the HTML element.

```
.background, #background, body{  
background: rgb(226, 121, 147) }
```

If only the background color should be changed can be used:

```
.background{ background-color: rgb(226,  
121, 147) }
```

This example shows the color as background, it is applied via the CSS property "background".

To optimize and compress your CSS code, you can use our [online CSS compressor and optimizer](#) based on csstidy. If you want to create a linear or radial gradient as background or border, check our [CSS Gradient Generator](#).

Hey! You found this booklet interesting? Support Converting Colors with the new Membership Option!

The pro membership hides all ads, plus gives you double the colors in the color bucket, and more awesome pro features!

[Learn more, Memberships starting at \\$2.50/m!](#)

**Follow me
on Twitter!**

@ConvertingColor