

Converting Colors

HunterLab(56.6299, 10.1156,
8.6668)

Have a look what the booklet for
HunterLab(56.6299, 10.1156,
8.6668) contains.

HunterLab(56.7308, 10.1810, 8.7995)	3
<i>Conversions</i>	4
<i>Details</i>	6
<i>Harmonies</i>	12
<i>Previews</i>	24
<i>Color Blindness Simulation</i>	28
<i>CSS Examples</i>	31

Color

**HunterLab(56.7308, 10.1810,
8.7995)**

Conversions

Conversions Part 1

Format	Color
Hex	B9908D
RGB	185, 144, 141
RGB Percent	73%, 56%, 55%
CMY	0.2745, 0.4353, 0.4471
CMYK	0.00, 0.22, 0.24, 0.27
HSL	4°, 24%, 64%
HSV	4°, 24%, 73%
XYZ	34.7885, 32.1838, 29.5778
YIQ	155.9170, 25.3990, 7.7590

Conversions

Conversions Part 2

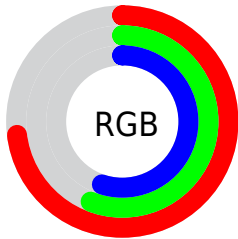
Format	Color
R_{YB}	185, 144, 141
Decimal	12161165
CIE _{Lab}	63.50, 15.01, 7.53
CIE _{LCh}	63, 16.792, 26.652
Yxy	32.1853, 0.3603, 0.3333
Android (android.graphics.Color)	4290351245 (0xFFB9908D)
YUV	155.9170, -7.3541, 25.5058
Hunter-Lab	56.7308, 10.1810, 8.7995

Details

The HunterLab color **56.7308, 10.1810, 8.7995** is a light color, and the websafe version is hex **CC9999**. A complement of this color would be **65.2841, -14.5337, -1.7115**, and the grayscale version is **57.6476, -3.0759, 3.1321**.

A 20% lighter version of the original color is **79.5019, 10.5439, 10.6695**, and **36.6187, 9.8288, 6.7111** is the 20% darker color. If you saturate the color by 10%, you get **51.8176, 16.4896, 10.9643**, and if you desaturate by 10%, it is **61.9752, 4.1482, 6.6632**.

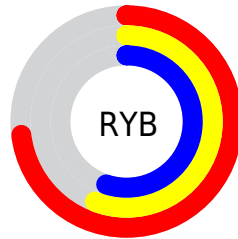
Distribution



Red (73%)

Green (56%)

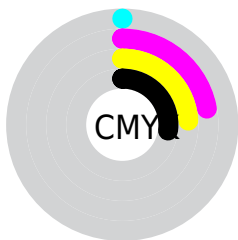
Blue (55%)



Red (73%)

Yellow (56%)

Blue (55%)

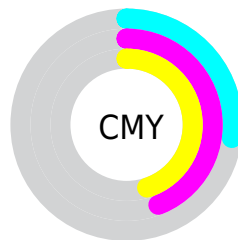


Cyan (0%)

Magenta (22%)

Yellow (24%)

Black (27%)



Cyan (27%)

Magenta (44%)

Yellow (45%)

Brightness & Saturation Gradients

These gradients show how the HunterLab color 56.7308, 10.1810, 8.7995 changes by changing the brightness by 10 percent. The first figure shows a shift by +10% for each color and the second figure -10%.

Similar to the brightness gradients but the following saturation gradients show a change of the HunterLab color 56.7308, 10.1810, 8.7995 by changing the saturation by 10% instead.

■ 56.7308, 10.1810,
8.7995

■ 56.7308, 10.1810,
8.7995

176.6246, 9.4152,
18.2056

■ 46.3714, 9.9505,
7.8222

■ 79.4365, 10.4069,
10.7868

■ 36.7318, 9.6320,
6.8489

■ 91.7084, 10.4215,
11.7994

■ 27.8718, 9.2091,
5.8734

■ 104.5543, 10.3776,
12.8268

■ 19.8673, 8.6622,
4.8840

117.9496, 10.2796,
13.8697

■ 12.8219, 7.9640,
3.8580

131.8726, 10.1314,
14.9288

■ 6.2209, 10.1800,
4.3547

146.3040, 9.9361,

0.0000, NaN, NaN

16.0043

0.0000, NaN, NaN

161.2266, 9.6966,
17.0966

0.0000, NaN, NaN

■ 56.7308, 10.1810,
8.7995

■ 56.7308, 10.1810,
8.7995

■ 51.8176, 16.4896,
10.9643

■ 61.9752, 4.1482,
6.6632

■ 47.2912, 23.0459,
13.1242

■ 67.4984, -1.6067,
4.5663

■ 43.2243, 29.7452,
15.2230

■ 73.2629, -7.1084,
2.5133

■ 39.6980, 36.3777,
17.1675

■ 79.2373, -12.3866,
0.5028

■ 36.7964, 42.5978,
18.8261

■ 85.3965, -17.4717,
-1.4692

■ 34.5907, 47.9396,
20.0485

■ 91.7201, -22.3926,
-3.4077

■ 33.1153, 51.9247,
20.7201

■ 94.3686, -25.5176,
-1.7375

■ 32.5466, 53.5381,
20.9923

Harmonies

Analogous

The Analogous color harmony consists of three colors that are next to each other on the color wheel.



56.7321, 11.7986, 2.2962



56.7308, 10.1810, 8.7995



56.7321, 4.9603, 13.2211

Triad

The Triadic color harmony groups three colors that are evenly spaced from another and form a triangle on the color wheel.



56.7321, 10.1789, 8.8004



56.7321, -14.3734, 10.0008



56.7321, -3.8543, -12.0605

Complementary

The Complementary color scheme is a pair of colors which are on the opposite of each other on the color wheel.



56.7308, 10.1810, 8.7995



65.2841, -14.5337, -1.7115

Split Complementary

Split-complementary colors differ from the complementary color scheme. The scheme consists of three colors, the original color and two neighbors of the complement color.



56.7321, -10.6014, -9.3465



56.7308, 10.1810, 8.7995



56.7321, -16.4767, 3.8687

Square

The Square scheme is like the rectangle color scheme, but the four colors are evenly spaced on the color wheel.



56.7321, 10.1789, 8.8004



56.7321, -9.2390, 13.8496



56.7321, -15.1313, -3.2879



56.7321, 3.4578, -10.3081

Rectangle

The Rectangle color scheme consists of four colors that form a rectangle on the color wheel.



56.7308, 10.1810, 8.7995



56.7321, 0.2740, 14.6862



56.7321, -15.1313, -3.2879



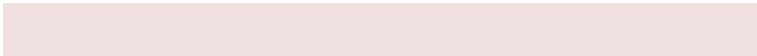
56.7321, -6.2603, -11.6325

Sweetspot

The Sweet Spot groups the original color and five complimentary colors.



56.7321, 10.1789, 8.8004



87.8312, 0.3758, 7.0392



57.2228, 18.3439, -10.3108



40.5765, 0.3842, 3.3451



96.5975, -5.1542, 5.2483



43.2801, -2.3093, 2.3515

Same Dimension

The Same Dimension uses a secret algorithm to generate beautiful new colors.



56.7321, 10.1789, 8.8004



72.1220, 18.3835, 13.4229



62.8378, -0.7726, 14.9299



30.1795, 0.7281, 2.6826



26.9329, 43.9221, 17.3648



5.3773, 7.2220, 3.4399

Inverse Universe

The Inverse Universe completely reimagines the original color for something new.



65.2841, -14.5337, -1.7115



86.1574, -22.3309, -3.8709



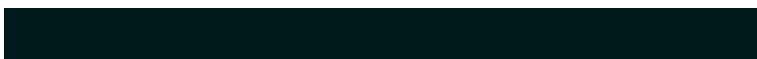
58.5923, -4.0618, -10.4125



31.7849, -3.8858, 0.7160



47.5551, -22.8735, -10.0624



9.1042, -4.5099, -1.6439

Previews

White Background



This preview shows how the HunterLab color 56.7308, 10.1810, 8.7995 looks on a white background.

Color Contrast Check

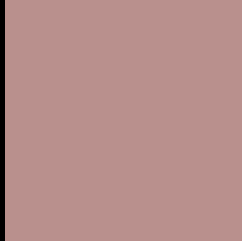
Large Text (above 18pt) WCAG AA × Fail

Any Text WCAG AA × Fail

Large Text (above 18pt) WCAG AAA × Fail

Any Text WCAG AAA × Fail

Black Background



This preview shows how the HunterLab color 56.7308, 10.1810, 8.7995 looks on a black background.

Color Contrast Check

Large Text (above 18pt) WCAG AA ✓ Pass

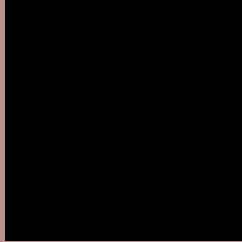
Any Text WCAG AA ✓ Pass

Large Text (above 18pt) WCAG AAA ✓ Pass

Any Text WCAG AAA ✓ Pass

If you want to check with other color combinations, try the [Color Contrast Checker](#).

HunterLab 56.7308, 10.1810, 8.7995 Background



This preview shows how black text looks on a background with the HunterLab color 56.7308, 10.1810, 8.7995.



This preview shows how white text looks on a background with the HunterLab color 56.7308, 10.1810,

Color Blindness Simulation

Color vision deficiency is a very complex topic, and I could not describe the different causes any better than Wikipedia does, so if you want to learn more, you should check out their [article about color blindness](#).

Dichromacy



Original Color

56.7308, 10.1810, 8.7995

Protanopia

56.7703, -2.2612, 6.5409

Deuteranopia

56.9096, 3.7157, 9.2837



Tritanopia

56.6436, 13.2876, 3.5912

Trichromacy



Original Color

56.7308, 10.1810, 8.7995

Protanomaly

56.7020, 1.7884, 7.3809

Deuteranomaly

56.7678, 6.0795, 9.1732

Tritanomaly

56.7926, 12.1806, 5.5244

Monochromacy



Original Color

56.7308, 10.1810, 8.7995

Achromatopsia

57.6586, -3.0765, 3.1327

Achromatomaly

57.3640, 1.5229, 5.1130

CSS Examples

Text

The CSS property to change the color of the text to HunterLab 56.7308, 10.1810, 8.7995 is called "color". The color property can be set on classes, ids or directly on the HTML element.

This example shows how text in the color `rgb(185, 144, 141)` looks like.

```
.text, #text, p{  
    color:rgb(185, 144, 141)  
}
```

If you want to add a text shadow in that color use the text-shadow property, you can generate a text shadow directly with our [CSS Text Shadow Generator](#).

Here you see how black text with a 4 pixel rgb(185, 144, 141) colored shadow looks like.

```
.shadow{ text-shadow: 4px 4px 2px rgb(185, 144, 141) }
```

Border

The CSS property to change the border of an element to HunterLab 56.7308, 10.1810, 8.7995 is called "border". The border property can be set on classes, ids or directly on the HTML element.

This example shows the color as border, it can be applied via the CSS property "border" or "border-color".

```
.border, #border, table{ border:4px solid rgb(185, 144, 141) }
```


If only the border color should be changed use the property `border-color`.

```
.border{ border-color:rgb(185, 144, 141) }
```

If you want to add a box shadow in that color use:

Here you see how a box with a 4 pixel `rgb(185, 144, 141)` colored shadow looks like.

```
.boxshadow{ -moz-box-shadow:4px 4px 4px  
4px rgb(185, 144, 141); -webkit-box-  
shadow:4px 4px 4px 4px rgb(185, 144, 141);  
box-shadow:4px 4px 4px 4px rgb(185, 144,  
141) }
```

Background

The CSS property to change the background color of an element to HunterLab 56.7308, 10.1810, 8.7995 is called "background". The background property can be set on classes, ids or directly on the HTML element.

```
.background, #background, body{  
background: rgb(185, 144, 141) }
```

If only the background color should be changed can be used:

```
.background{ background-color: rgb(185,  
144, 141) }
```

This example shows the color as background, it is applied via the CSS property "background".

To optimize and compress your CSS code, you can use our [online CSS compressor and optimizer](#) based on csstidy. If you want to create a linear or radial gradient as background or border, check our [CSS Gradient Generator](#).

Hey! You found this booklet interesting? Support Converting Colors with the new Membership Option!

The pro membership hides all ads, plus gives you double the colors in the color bucket, and more awesome pro features!

[Learn more, Memberships starting at \\$2.50/m!](#)

**Follow me
on Twitter!**

@ConvertingColor