

Converting Colors

HunterLab(56.6944, 9.1719,
7.2655)

Have a look what the booklet for
HunterLab(56.6944, 9.1719, 7.2655)
contains.

HunterLab(56.7805, 9.1783, 7.1765)	3
<i>Conversions</i>	4
<i>Details</i>	6
<i>Harmonies</i>	12
<i>Previews</i>	24
<i>Color Blindness Simulation</i>	28
<i>CSS Examples</i>	31

Color

**HunterLab(56.7805, 9.1783,
7.1765)**

Conversions

Conversions Part 1

Format	Color
Hex	B69191
RGB	182, 145, 145
RGB Percent	71%, 57%, 57%
CMY	0.2863, 0.4314, 0.4314
CMYK	0.00, 0.20, 0.20, 0.29
HSL	0°, 20%, 64%
HSV	0°, 20%, 71%
XYZ	34.5277, 32.2403, 31.1913
YIQ	156.0630, 22.0520, 7.8440

Conversions

Conversions Part 2

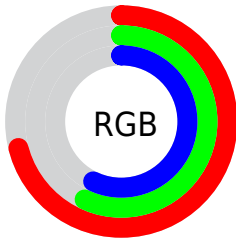
Format	Color
RYB	182, 145, 145
Decimal	11964817
CIELab	63.54, 13.91, 5.30
CIELCh	64, 14.887, 20.850
Yxy	32.2417, 0.3525, 0.3291
Android (android.graphics.Color)	4290154897 (0xFFB69191)
YUV	156.0630, -5.4541, 22.7467
Hunter-Lab	56.7805, 9.1783, 7.1765

Details

The HunterLab color **56.7805, 9.1783, 7.1765** is a light color, and the websafe version is hex **CC9999**. A complement of this color would be **65.4615, -14.0801, 0.0066**, and the grayscale version is **57.7005, -3.0788, 3.1350**.

A 20% lighter version of the original color is **79.4654, 9.1710, 8.8123**, and **36.6344, 8.8322, 5.2068** is the 20% darker color. If you saturate the color by 10%, you get **51.5762, 15.9004, 9.0557**, and if you desaturate by 10%, it is **62.3404, 2.7273, 5.4168**.

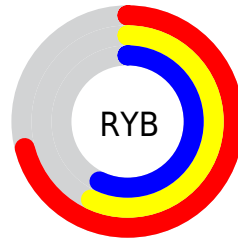
Distribution



Red (71%)

Green (57%)

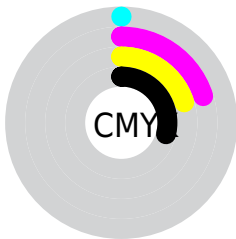
Blue (57%)



Red (71%)

Yellow (57%)

Blue (57%)

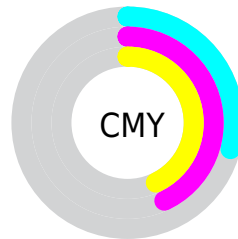


Cyan (0%)

Magenta (20%)

Yellow (20%)

Black (29%)



Cyan (29%)


Magenta (43%)


Yellow (43%)

Brightness & Saturation Gradients


These gradients show how the HunterLab color 56.7805, 9.1783, 7.1765 changes by changing the brightness by 10 percent. The first figure shows a shift by +10% for each color and the second figure -10%.


Similar to the brightness gradients but the following saturation gradients show a change of the HunterLab color 56.7805, 9.1783, 7.1765 by changing the saturation by 10% instead.

 56.7805, 9.1783,
7.1765


 56.7805, 9.1783,
7.1765


176.6972, 8.0111,
15.7093

 46.4179, 9.0025,
6.3263


 79.4920, 9.3027,
8.9347

 36.7748, 8.7417,
5.4912


 91.7667, 9.2698,
9.8425

 27.9110, 8.3801,
4.6687


104.6152, 9.1802,
10.7703

 19.9023, 7.8985,
3.8522

118.0130, 9.0381,
11.7182

 12.8522, 7.2694,
3.0288

131.9384, 8.8473,
12.6862

 6.2621, 9.3461,
3.8482

146.3722, 8.6108,

0.0000, NaN, NaN

13.6741

0.0000, NaN, NaN

161.2970, 8.3313,
14.6819

0.0000, NaN, NaN

■ 56.7805, 9.1783,
7.1765

■ 56.7805, 9.1783,
7.1765

■ 51.5762, 15.9004,
9.0557

■ 62.3404, 2.7273,
5.4168

■ 46.7915, 22.8588,
11.0427

■ 68.1976, -3.4503,
3.7685

■ 42.5109, 29.9278,
13.1031

■ 74.3102, -9.3809,
2.2215

■ 38.8300, 36.8527,
15.1582

■ 80.6442, -15.0959,
0.7625

■ 35.8483, 43.2112,
17.0737

■ 87.1724, -20.6277,
-0.6209

■ 33.6480, 48.4465,
18.6689

■ 93.8729, -26.0059,
-1.9406

■ 32.2611, 52.0316,
19.7695

■ 94.1728, -26.2419,
-1.9944

■ 31.5365, 54.0043,
20.3781

Harmonies

Analogous

The Analogous color harmony consists of three colors that are next to each other on the color wheel.



56.7818, 9.8948, 1.1596



56.7805, 9.1783, 7.1765



56.7818, 5.1090, 11.5906

Triad

The Triadic color harmony groups three colors that are evenly spaced from another and form a triangle on the color wheel.



56.7818, 9.1763, 7.1775



56.7818, -12.4402, 10.1226



56.7818, -5.0145, -10.0026

Complementary

The Complementary color scheme is a pair of colors which are on the opposite of each other on the color wheel.



56.7805, 9.1783, 7.1765



65.4615, -14.0801, 0.0066

Split Complementary

Split-complementary colors differ from the complementary color scheme. The scheme consists of three colors, the original color and two neighbors of the complement color.



56.7818, -10.7402, -6.9675



56.7805, 9.1783, 7.1765



56.7818, -14.8982, 4.9564

Square

The Square scheme is like the rectangle color scheme, but the four colors are evenly spaced on the color wheel.



56.7818, 9.1763, 7.1775



56.7818, -7.4304, 13.1529



56.7818, -14.2902, -1.3242



56.7818, 1.5029, -9.2345

Rectangle

The Rectangle color scheme consists of four colors that form a rectangle on the color wheel.



56.7805, 9.1783, 7.1765



56.7818, 1.1426, 13.2505



56.7818, -14.2902, -1.3242



56.7818, -7.0909, -9.3816

Sweetspot

The Sweet Spot groups the original color and five complimentary colors.



56.7818, 9.1763, 7.1775



87.2282, 0.1125, 6.3375



57.9429, 15.2345, -9.3144



40.7554, 0.3074, 3.0465



96.5975, -5.1542, 5.2483



43.2801, -2.3093, 2.3515

Same Dimension

The Same Dimension uses a secret algorithm to generate beautiful new colors.



56.7818, 9.1763, 7.1775



73.5353, 16.0033, 10.6762



61.9372, -0.0610, 12.5207



30.0206, 1.0052, 2.5052



26.5017, 45.3820, 17.1247



4.9763, 8.5192, 3.2155

Inverse Universe

The Inverse Universe completely reimagines the original color for something new.



65.4615, -14.0801, 0.0066



87.4682, -21.4190, -0.8650



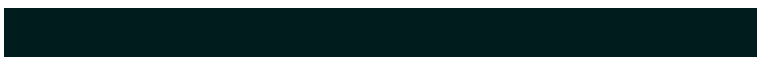
59.8079, -5.2570, -7.1117



31.9539, -4.1542, 0.9149



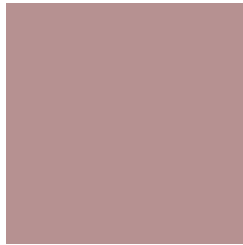
50.9966, -27.0329, -5.3850



9.5752, -5.0759, -1.0108

Previews

White Background



This preview shows how the HunterLab color 56.7805, 9.1783, 7.1765 looks on a white background.

Color Contrast Check

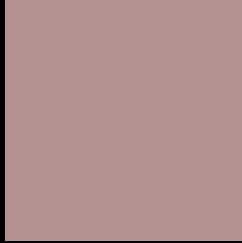
Large Text (above 18pt) WCAG AA × Fail

Any Text WCAG AA × Fail

Large Text (above 18pt) WCAG AAA × Fail

Any Text WCAG AAA × Fail

Black Background



This preview shows how the HunterLab color 56.7805, 9.1783, 7.1765 looks on a black background.

Color Contrast Check

Large Text (above 18pt) WCAG AA ✓ Pass

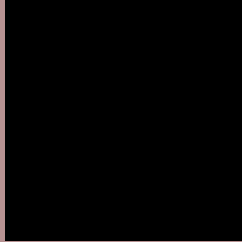
Any Text WCAG AA ✓ Pass

Large Text (above 18pt) WCAG AAA ✓ Pass

Any Text WCAG AAA ✓ Pass

If you want to check with other color combinations, try the [Color Contrast Checker](#).

HunterLab 56.7805, 9.1783, 7.1765 Background



This preview shows how black text looks on a background with the HunterLab color 56.7805, 9.1783, 7.1765.



This preview shows how white text looks on a background with the HunterLab color 56.7805, 9.1783,

Color Blindness Simulation

Color vision deficiency is a very complex topic, and I could not describe the different causes any better than Wikipedia does, so if you want to learn more, you should check out their [article about color blindness](#).

Dichromacy



Original Color

56.7805, 9.1783, 7.1765

Protanopia

56.7922, -1.9623, 4.8376

Deuteranopia

56.9146, 3.9438, 7.6528



Tritanopia

56.9037, 11.5206, 2.9547

Trichromacy



Original Color

56.7805, 9.1783, 7.1765

Protanomaly

56.7153, 2.0533, 5.6948

Deuteranomaly

56.9417, 5.4566, 7.7090

Tritanomaly

56.7875, 10.9128, 4.6148

Monochromacy



Original Color

56.7805, 9.1783, 7.1765

Achromatopsia

57.6586, -3.0765, 3.1327

Achromatomaly

57.2038, 1.0347, 4.4778

CSS Examples

Text

The CSS property to change the color of the text to HunterLab 56.7805, 9.1783, 7.1765 is called "color". The color property can be set on classes, ids or directly on the HTML element.

This example shows how text in the color `rgb(182, 145, 145)` looks like.

```
.text, #text, p{  
    color:rgb(182, 145, 145)  
}
```

If you want to add a text shadow in that color use the text-shadow property, you can generate a text shadow directly with our [CSS Text Shadow Generator](#).

Here you see how black text with a 4 pixel rgb(182, 145, 145) colored shadow looks like.

```
.shadow{ text-shadow: 4px 4px 2px rgb(182, 145, 145) }
```

Border

The CSS property to change the border of an element to HunterLab 56.7805, 9.1783, 7.1765 is called "border".

The border property can be set on classes, ids or directly on the HTML element.

This example shows the color as border, it can be applied via the CSS property "border" or "border-color".

```
.border, #border, table{ border:4px solid rgb(182, 145, 145) }
```


If only the border color should be changed use the property `border-color`.

```
.border{ border-color:rgb(182, 145, 145) }
```

If you want to add a box shadow in that color use:

Here you see how a box with a 4 pixel `rgb(182, 145, 145)` colored shadow looks like.

```
.boxshadow{ -moz-box-shadow:4px 4px 4px  
4px rgb(182, 145, 145); -webkit-box-  
shadow:4px 4px 4px 4px rgb(182, 145, 145);  
box-shadow:4px 4px 4px 4px rgb(182, 145,  
145) }
```

Background

The CSS property to change the background color of an element to HunterLab 56.7805, 9.1783, 7.1765 is called "background". The background property can be set on classes, ids or directly on the HTML element.

```
.background, #background, body{  
background: rgb(182, 145, 145) }
```

If only the background color should be changed can be used:

```
.background{ background-color: rgb(182,  
145, 145) }
```

This example shows the color as background, it is applied via the CSS property "background".

To optimize and compress your CSS code, you can use our [online CSS compressor and optimizer](#) based on csstidy. If you want to create a linear or radial gradient as background or border, check our [CSS Gradient Generator](#).

Hey! You found this booklet interesting? Support Converting Colors with the new Membership Option!

The pro membership hides all ads, plus gives you double the colors in the color bucket, and more awesome pro features!

[Learn more, Memberships starting at \\$2.50/m!](#)

**Follow me
on Twitter!**

@ConvertingColor