

# Converting Colors

HunterLab(56.7109, 6.9368,  
5.0392)

Have a look what the booklet for  
HunterLab(56.7109, 6.9368, 5.0392)  
contains.

<b>HunterLab(56.8327, 6.8375, 5.0380)</b> .....	3
<b><i>Conversions</i></b> .....	4
<b><i>Details</i></b> .....	6
<b><i>Harmonies</i></b> .....	12
<b><i>Previews</i></b> .....	24
<b><i>Color Blindness Simulation</i></b> .....	28
<b><i>CSS Examples</i></b> .....	31

# Color

**HunterLab(56.8327, 6.8375,  
5.0380)**

# Conversions

## Conversions Part 1

<b>Format</b>	<b>Color</b>
Hex	B09396
RGB	176, 147, 150
RGB Percent	69%, 58%, 59%
CMY	0.3098, 0.4235, 0.4118
CMYK	0.00, 0.16, 0.15, 0.31
HSL	354°, 16%, 63%
HSV	354°, 16%, 69%
XYZ	33.8432, 32.2996, 33.3049
YIQ	156.0130, 16.3210, 7.0810

# Conversions

## Conversions Part 2

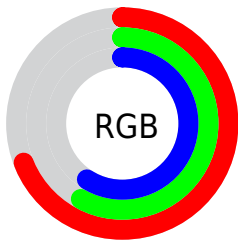
<b>Format</b>	<b>Color</b>
<b>RYB</b>	176, 147, 150
Decimal	11572118
CIELab	63.59, 11.33, 2.47
CIELCh	64, 11.595, 12.297
Yxy	32.3010, 0.3403, 0.3248
Android (android.graphics.Color)	4289762198 (0xFFB09396)
YUV	156.0130, -2.9644, 17.5286
Hunter-Lab	56.8327, 6.8375, 5.0380

# Details

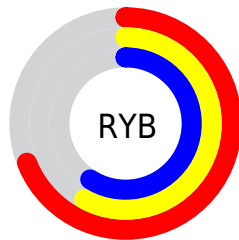
The HunterLab color  $56.8327, 6.8375, 5.0380$  is a light color, and the websafe version is hex  $CC9999$ . A complement of this color would be  $63.4599, -12.3199, 1.9489$ , and the grayscale version is  $57.6720, -3.0772, 3.1334$ .

A 20% lighter version of the original color is  $79.5542, 6.7687, 6.5641$ , and  $36.7118, 6.7589, 3.6757$  is the 20% darker color. If you saturate the color by 10%, you get  $51.7347, 13.4102, 6.1731$ , and if you desaturate by 10%, it is  $62.2440, 0.4818, 4.0983$ .

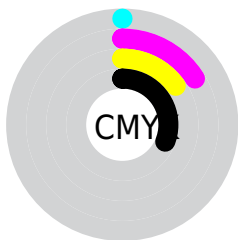
# Distribution



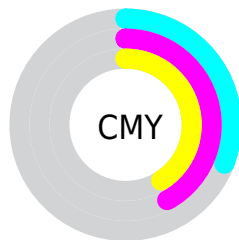
- Red (69%)
- Green (58%)
- Blue (59%)



- Red (69%)
- Yellow (58%)
- Blue (59%)



- Cyan (0%)
- Magenta (16%)
- Yellow (15%)
- Black (31%)



- Cyan (31%)
- Magenta (42%)
- Yellow (41%)

# Brightness & Saturation Gradients

These gradients show how the HunterLab color 56.8327, 6.8375, 5.0380 changes by changing the brightness by 10 percent. The first figure shows a shift by +10% for each color and the second figure -10%.

Similar to the brightness gradients but the following saturation gradients show a change of the HunterLab color 56.8327, 6.8375, 5.0380 by changing the saturation by 10% instead.



■ 56.8327, 6.8375,  
5.0380

■ 56.8327, 6.8375,  
5.0380

176.7733, 4.7193,  
12.4893

■ 46.4667, 6.7919,  
4.3436

■ 79.5504, 6.7210,  
6.5141

■ 36.8199, 6.6688,  
3.6773

■ 91.8279, 6.5753,  
7.2925

■ 27.9522, 6.4539,  
3.0403

104.6791, 6.3774,  
8.0970

■ 19.9391, 6.1293,  
2.4324

118.0796, 6.1311,  
8.9270

■ 12.8840, 5.6690,  
1.8516

132.0075, 5.8395,  
9.7819

■ 6.3050, 7.4927,  
1.9667

146.4437, 5.5055,

0.0000, NaN, NaN

10.6609

0.0000, NaN, NaN

161.3709, 5.1314,  
11.5636

0.0000, NaN, NaN

■ 56.8327, 6.8375,  
5.0380

■ 56.8327, 6.8375,  
5.0380

■ 51.7347, 13.4102,  
6.1731

■ 62.2440, 0.4818,  
4.0983

■ 47.0041, 20.1755,  
7.5245

■ 67.9185, -5.6554,  
3.3247

■ 42.7134, 27.0379,  
9.1060

■ 73.8209, -11.5956,  
2.6931

■ 38.9471, 33.7996,  
10.9045

■ 79.9220, -17.3641,  
2.1816

■ 35.7976, 40.1192,  
12.8607

■ 86.1983, -22.9868,  
1.7714

■ 33.3512, 45.5138,  
14.8516

■ 92.6309, -28.4877,  
1.4469

■ 31.6630, 49.4606,  
16.6949

■ 93.7924, -27.6538,  
-2.4951

■ 30.7079, 51.6725,  
18.1842

■ 30.4540, 52.2989,  
18.5512

# Harmonies

## Analogous

The Analogous color harmony consists of three colors that are next to each other on the color wheel.



56.8340, 6.5812, 0.1923



56.8327, 6.8375, 5.0380



56.8340, 4.3782, 9.0033

# Triad

The Triadic color harmony groups three colors that are evenly spaced from another and form a triangle on the color wheel.



56.8340, 6.8357, 5.0390



56.8340, -9.4665, 9.5518



56.8340, -5.9780, -6.4985

# Complementary

The Complementary color scheme is a pair of colors which are on the opposite of each other on the color wheel.



56.8327, 6.8375, 5.0380



63.4599, -12.3199, 1.9489

# Split Complementary

Split-complementary colors differ from the complementary color scheme. The scheme consists of three colors, the original color and two neighbors of the complement color.



56.8340, -10.0878, -3.5279



56.8327, 6.8375, 5.0380



56.8340, -12.0526, 5.8496

# Square

The Square scheme is like the rectangle color scheme, but the four colors are evenly spaced on the color wheel.



56.8340, 6.8357, 5.0390



56.8340, -5.1028, 11.4510



56.8340, -12.2760, 1.0770



56.8340, -0.9383, -6.7641



# Rectangle

The Rectangle color scheme consists of four colors that form a rectangle on the color wheel.



56.8327, 6.8375, 5.0380



56.8340, 1.5813, 10.7272



56.8340, -12.2760, 1.0770



56.8340, -7.5096, -5.7719

# Sweetspot

The Sweet Spot groups the original color and five complimentary colors.



56.8340, 6.8357, 5.0390



84.8656, -0.5149, 5.3621



57.3098, 10.0291, -7.0042



39.2678, 0.0274, 2.5321



94.3401, -5.0338, 5.1257



41.3092, -2.2042, 2.2444



# Same Dimension

The Same Dimension uses a secret algorithm to generate beautiful new colors.



56.8340, 6.8357, 5.0390



73.8249, 12.6024, 7.3451



59.8594, 0.8643, 9.5572



29.1874, 1.0938, 2.0921



26.0944, 44.8286, 15.7668



4.6783, 8.1351, 2.0660



# Inverse Universe

The Inverse Universe completely reimagines the original color for something new.



56.8340, 6.8357, 5.0390



73.8249, 12.6024, 7.3451



60.1722, -6.5045, -3.5084



29.1874, 1.0938, 2.0921



26.0944, 44.8286, 15.7668

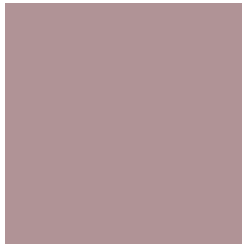


4.6783, 8.1351, 2.0660



# Previews

## White Background



This preview shows how the HunterLab color 56.8327, 6.8375, 5.0380 looks on a white background.

## Color Contrast Check

Large Text (above 18pt) WCAG AA × Fail

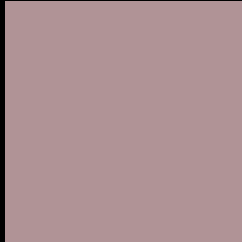
Any Text WCAG AA × Fail

Large Text (above 18pt) WCAG AAA × Fail

Any Text WCAG AAA × Fail



# Black Background



This preview shows how the HunterLab color 56.8327, 6.8375, 5.0380 looks on a black background.

## Color Contrast Check

Large Text (above 18pt) WCAG AA ✓ Pass

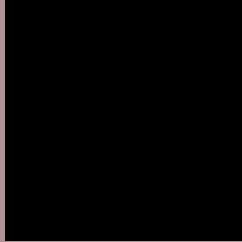
Any Text WCAG AA ✓ Pass

Large Text (above 18pt) WCAG AAA ✓ Pass

Any Text WCAG AAA ✓ Pass

If you want to check with other color combinations, try the [Color Contrast Checker](#).

## HunterLab 56.8327, 6.8375, 5.0380 Background



This preview shows how black text looks on a background with the HunterLab color 56.8327, 6.8375, 5.0380.



This preview shows how white text looks on a background with the HunterLab color 56.8327, 6.8375,



# Color Blindness Simulation

Color vision deficiency is a very complex topic, and I could not describe the different causes any better than Wikipedia does, so if you want to learn more, you should check out their [article about color blindness](#).

## Dichromacy



### Original Color

56.8327, 6.8375, 5.0380

### Protanopia

56.8187, -1.6401, 3.0812

### Deuteranopia

56.8813, 4.1631, 5.0469



## Tritanopia

56.8676, 8.7607, 1.9378

# Trichromacy



## Original Color

56.8327, 6.8375, 5.0380

## Protanomaly

56.8556, 1.3639, 3.6307

## Deuteranomaly

56.8032, 5.3268, 4.9778

## Tritanomaly

56.7785, 8.2909, 3.2076

# Monochromacy



## Original Color

56.8327, 6.8375, 5.0380

## Achromatopsia

57.6586, -3.0765, 3.1327

## Achromatomaly

57.3603, 0.2218, 3.7487

# CSS Examples

## Text

The CSS property to change the color of the text to HunterLab 56.8327, 6.8375, 5.0380 is called "color". The color property can be set on classes, ids or directly on the HTML element.

This example shows how text in the color `rgb(176, 147, 150)` looks like.

```
.text, #text, p{  
    color:rgb(176, 147, 150)  
}
```

If you want to add a text shadow in that color use the text-shadow property, you can generate a text shadow directly with our [CSS Text Shadow Generator](#).

Here you see how black text with a 4 pixel rgb(176, 147, 150) colored shadow looks like.

```
.shadow{ text-shadow: 4px 4px 2px rgb(176, 147, 150) }
```

## Border

The CSS property to change the border of an element to HunterLab 56.8327, 6.8375, 5.0380 is called "border".

The border property can be set on classes, ids or directly on the HTML element.

This example shows the color as border, it can be applied via the CSS property "border" or "border-color".

```
.border, #border, table{ border:4px solid rgb(176, 147, 150) }
```



If only the border color should be changed use the property `border-color`.

```
.border{ border-color:rgb(176, 147, 150) }
```

If you want to add a box shadow in that color use:

Here you see how a box with a 4 pixel `rgb(176, 147, 150)` colored shadow looks like.

```
.boxshadow{ -moz-box-shadow:4px 4px 4px  
4px rgb(176, 147, 150); -webkit-box-  
shadow:4px 4px 4px 4px rgb(176, 147, 150);  
box-shadow:4px 4px 4px 4px rgb(176, 147,  
150) }
```

# Background

The CSS property to change the background color of an element to HunterLab 56.8327, 6.8375, 5.0380 is called "background". The background property can be set on classes, ids or directly on the HTML element.

```
.background, #background, body{  
background: rgb(176, 147, 150) }
```

If only the background color should be changed can be used:

```
.background{ background-color: rgb(176,  
147, 150) }
```

This example shows the color as background, it is applied via the CSS property "background".

To optimize and compress your CSS code, you can use our [online CSS compressor and optimizer](#) based on csstidy. If you want to create a linear or radial gradient as background or border, check our [CSS Gradient Generator](#).

Hey! You found this booklet interesting? Support Converting Colors with the new Membership Option!

The pro membership hides all ads, plus gives you double the colors in the color bucket, and more awesome pro features!

**[Learn more, Memberships starting at \\$2.50/m!](#)**

**Follow me  
on Twitter!**

@ConvertingColor