

Converting Colors

HunterLab(56.7204, 9.4958,
8.4592)

Have a look what the booklet for
HunterLab(56.7204, 9.4958, 8.4592)
contains.

HunterLab(56.8076, 9.1061, 8.4546)	3
<i>Conversions</i>	4
<i>Details</i>	6
<i>Harmonies</i>	12
<i>Previews</i>	24
<i>Color Blindness Simulation</i>	28
<i>CSS Examples</i>	31

Color

**HunterLab(56.8076, 9.1061,
8.4546)**

Conversions

Conversions Part 1

Format	Color
Hex	B7918E
RGB	183, 145, 142
RGB Percent	72%, 57%, 56%
CMY	0.2824, 0.4314, 0.4431
CMYK	0.00, 0.21, 0.22, 0.28
HSL	4°, 22%, 64%
HSV	4°, 22%, 72%
XYZ	34.5363, 32.2710, 29.9998
YIQ	156.0200, 23.6110, 7.1230

Conversions

Conversions Part 2

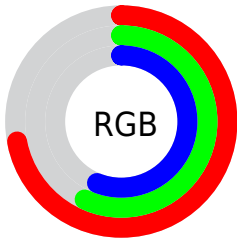
Format	Color
R_{YB}	183, 145, 142
Decimal	12030350
CIE _{Lab}	63.57, 13.83, 7.04
CIE _{LCh}	64, 15.522, 26.983
Yxy	32.2725, 0.3568, 0.3334
Android (android.graphics.Color)	4290220430 (0xFFB7918E)
YUV	156.0200, -6.9119, 23.6615
Hunter-Lab	56.8076, 9.1061, 8.4546

Details

The HunterLab color **56.8076, 9.1061, 8.4546** is a light color, and the websafe version is hex **CC9999**. A complement of this color would be **64.6614, -13.7138, -1.4744**, and the grayscale version is **57.6883, -3.0781, 3.1343**.

A 20% lighter version of the original color is **79.5975, 9.4345, 10.3121**, and **36.6678, 8.7923, 6.3764** is the 20% darker color. If you saturate the color by 10%, you get **51.9279, 15.2499, 10.6056**, and if you desaturate by 10%, it is **62.0031, 3.2357, 6.3281**.

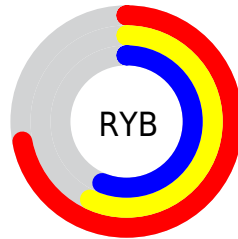
Distribution



Red (72%)

Green (57%)

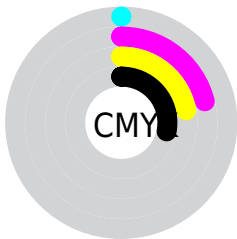
Blue (56%)



Red (72%)

Yellow (57%)

Blue (56%)

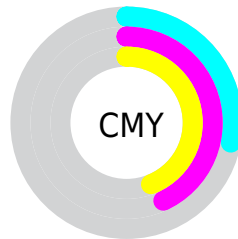


Cyan (0%)

Magenta (21%)

Yellow (22%)

Black (28%)



Cyan (28%)

Magenta (43%)

Yellow (44%)

Brightness & Saturation Gradients

These gradients show how the HunterLab color 56.8076, 9.1061, 8.4546 changes by changing the brightness by 10 percent. The first figure shows a shift by +10% for each color and the second figure -10%.

Similar to the brightness gradients but the following saturation gradients show a change of the HunterLab color 56.8076, 9.1061, 8.4546 by changing the saturation by 10% instead.

■ 56.8076, 9.1061,
8.4546

■ 56.8076, 9.1061,
8.4546

176.7367, 7.9086,
17.6688

■ 46.4432, 8.9344,
7.5054

■ 79.5224, 9.2228,
10.3913

■ 36.7982, 8.6781,
6.5627

■ 91.7985, 9.1863,
11.3809

■ 27.9324, 8.3212,
5.6212

104.6484, 9.0932,
12.3864

■ 19.9214, 7.8446,
4.6704

118.0476, 8.9479,
13.4085

■ 12.8687, 7.2210,
3.6899

131.9743, 8.7538,
14.4476

■ 6.2844, 9.2553,
4.3991

146.4093, 8.5142,

0.0000, NaN, NaN

15.5039

0.0000, NaN, NaN

161.3354, 8.2317,
16.5776

0.0000, NaN, NaN

■ 56.8076, 9.1061,
8.4546

■ 56.8076, 9.1061,
8.4546

■ 51.9279, 15.2499,
10.6056

■ 62.0031, 3.2357,
6.3281

■ 47.4164, 21.6480,
12.7501

■ 67.4650, -2.3633,
4.2360

■ 43.3417, 28.2123,
14.8365

■ 73.1580, -7.7170,
2.1827

■ 39.7815, 34.7597,
16.7787

■ 79.0525, -12.8548,
0.1671

■ 36.8178, 40.9780,
18.4532

■ 85.1248, -17.8065,
-1.8142

■ 34.5233, 46.4306,
19.7145

■ 91.3555, -22.5999,
-3.7658

■ 32.9400, 50.6416,
20.4426

■ 94.2376, -26.0019,
-1.9093

■ 32.1958, 52.7547,
20.7624

Harmonies

Analogous

The Analogous color harmony consists of three colors that are next to each other on the color wheel.



56.8089, 10.6334, 2.4332



56.8076, 9.1061, 8.4546



56.8089, 4.2736, 12.5715

Triad

The Triadic color harmony groups three colors that are evenly spaced from another and form a triangle on the color wheel.



56.8089, 9.1041, 8.4555



56.8089, -13.5960, 9.4657



56.8089, -3.7213, -10.7966

Complementary

The Complementary color scheme is a pair of colors which are on the opposite of each other on the color wheel.



56.8076, 9.1061, 8.4546



64.6614, -13.7138, -1.4744

Split Complementary

Split-complementary colors differ from the complementary color scheme. The scheme consists of three colors, the original color and two neighbors of the complement color.



56.8089, -9.9903, -8.3676



56.8076, 9.1061, 8.4546



56.8089, -15.5206, 3.7435

Square

The Square scheme is like the rectangle color scheme, but the four colors are evenly spaced on the color wheel.



56.8089, 9.1041, 8.4555



56.8089, -8.8507, 13.1047



56.8089, -14.2319, -2.8510



56.8089, 3.0261, -9.1573

Rectangle

The Rectangle color scheme consists of four colors that form a rectangle on the color wheel.



56.8076, 9.1061, 8.4546



56.8089, -0.0566, 13.9330



56.8089, -14.2319, -2.8510



56.8089, -5.9518, -10.4226

Sweetspot

The Sweet Spot groups the original color and five complimentary colors.



56.8089, 9.1041, 8.4555



86.8015, 0.3245, 6.9817



57.2012, 16.8164, -9.3633



40.5894, 0.3620, 3.3595



96.5975, -5.1542, 5.2483



43.2801, -2.3093, 2.3515

Same Dimension

The Same Dimension uses a secret algorithm to generate beautiful new colors.



56.8089, 9.1041, 8.4555



72.6756, 16.2850, 12.7646



62.4621, -0.9763, 14.1798



30.1912, 0.7078, 2.6956



26.9660, 43.8114, 17.3833



5.4055, 7.1361, 3.4558

Inverse Universe

The Inverse Universe completely reimagines the original color for something new.



64.6614, -13.7138, -1.4744



85.4360, -20.9092, -3.4019



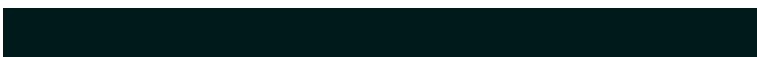
58.5071, -4.0465, -9.4185



31.7726, -3.8661, 0.7014



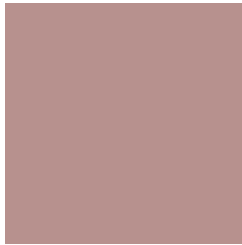
47.3058, -22.5654, -10.4159



9.0700, -4.4681, -1.6914

Previews

White Background



This preview shows how the HunterLab color 56.8076, 9.1061, 8.4546 looks on a white background.

Color Contrast Check

Large Text (above 18pt) WCAG AA × Fail

Any Text WCAG AA × Fail

Large Text (above 18pt) WCAG AAA × Fail

Any Text WCAG AAA × Fail

Black Background



This preview shows how the HunterLab color 56.8076, 9.1061, 8.4546 looks on a black background.

Color Contrast Check

Large Text (above 18pt) WCAG AA ✓ Pass

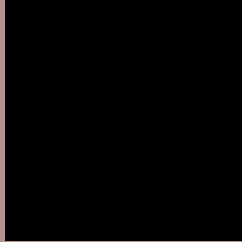
Any Text WCAG AA ✓ Pass

Large Text (above 18pt) WCAG AAA ✓ Pass

Any Text WCAG AAA ✓ Pass

If you want to check with other color combinations, try the [Color Contrast Checker](#).

HunterLab 56.8076, 9.1061, 8.4546 Background



This preview shows how black text looks on a background with the HunterLab color 56.8076, 9.1061, 8.4546.



This preview shows how white text looks on a background with the HunterLab color 56.8076, 9.1061,

Color Blindness Simulation

Color vision deficiency is a very complex topic, and I could not describe the different causes any better than Wikipedia does, so if you want to learn more, you should check out their [article about color blindness](#).

Dichromacy



Original Color

56.8076, 9.1061, 8.4546

Protanopia

57.0865, -2.5940, 6.4618

Deuteranopia

56.9356, 3.8552, 8.9096



Tritanopia

56.7172, 12.2261, 3.2042

Trichromacy



Original Color

56.8076, 9.1061, 8.4546

Protanomaly

57.0109, 1.4428, 7.2961

Deuteranomaly

56.9649, 5.3751, 8.9678

Tritanomaly

56.8673, 11.1138, 5.1525

Monochromacy



Original Color

56.8076, 9.1061, 8.4546

Achromatopsia

57.6586, -3.0765, 3.1327

Achromatomaly

57.2694, 1.2009, 4.9990

CSS Examples

Text

The CSS property to change the color of the text to HunterLab 56.8076, 9.1061, 8.4546 is called "color". The color property can be set on classes, ids or directly on the HTML element.

This example shows how text in the color `rgb(183, 145, 142)` looks like.

```
.text, #text, p{  
    color:rgb(183, 145, 142)  
}
```

If you want to add a text shadow in that color use the text-shadow property, you can generate a text shadow directly with our [CSS Text Shadow Generator](#).

Here you see how black text with a 4 pixel rgb(183, 145, 142) colored shadow looks like.

```
.shadow{ text-shadow: 4px 4px 2px rgb(183, 145, 142) }
```

Border

The CSS property to change the border of an element to HunterLab 56.8076, 9.1061, 8.4546 is called "border".

The border property can be set on classes, ids or directly on the HTML element.

This example shows the color as border, it can be applied via the CSS property "border" or "border-color".

```
.border, #border, table{ border:4px solid rgb(183, 145, 142) }
```


If only the border color should be changed use the property `border-color`.

```
.border{ border-color:rgb(183, 145, 142) }
```

If you want to add a box shadow in that color use:

Here you see how a box with a 4 pixel `rgb(183, 145, 142)` colored shadow looks like.

```
.boxshadow{ -moz-box-shadow:4px 4px 4px  
4px rgb(183, 145, 142); -webkit-box-  
shadow:4px 4px 4px 4px rgb(183, 145, 142);  
box-shadow:4px 4px 4px 4px rgb(183, 145,  
142) }
```

Background

The CSS property to change the background color of an element to HunterLab 56.8076, 9.1061, 8.4546 is called "background". The background property can be set on classes, ids or directly on the HTML element.

```
.background, #background, body{  
background: rgb(183, 145, 142) }
```

If only the background color should be changed can be used:

```
.background{ background-color: rgb(183,  
145, 142) }
```

This example shows the color as background, it is applied via the CSS property "background".

To optimize and compress your CSS code, you can use our [online CSS compressor and optimizer](#) based on csstidy. If you want to create a linear or radial gradient as background or border, check our [CSS Gradient Generator](#).

Hey! You found this booklet interesting? Support Converting Colors with the new Membership Option!

The pro membership hides all ads, plus gives you double the colors in the color bucket, and more awesome pro features!

[Learn more, Memberships starting at \\$2.50/m!](#)

**Follow me
on Twitter!**

@ConvertingColor