

Converting Colors

HunterLab(56.7829, 3.8329,
4.9283)

Have a look what the booklet for
HunterLab(56.7829, 3.8329, 4.9283)
contains.

HunterLab(56.7829, 3.8329, 4.9283)	3
<i>Conversions</i>	4
<i>Details</i>	6
<i>Harmonies</i>	12
<i>Previews</i>	24
<i>Color Blindness Simulation</i>	28
<i>CSS Examples</i>	31

Color

**HunterLab(56.7829, 3.8329,
4.9283)**

Conversions

Conversions Part 1

Format	Color
Hex	AA9596
RGB	170, 149, 150
RGB Percent	67%, 58%, 59%
CMY	0.3333, 0.4157, 0.4118
CMYK	0.00, 0.12, 0.12, 0.33
HSL	357°, 11%, 63%
HSV	357°, 12%, 67%
XYZ	32.8301, 32.2430, 33.3474
YIQ	155.3930, 12.1950, 4.7630

Conversions

Conversions Part 2

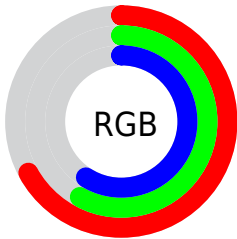
Format	Color
R_{YB}	170, 149, 150
Decimal	11179414
CIE Lab	63.54, 7.96, 2.33
CIE LCh	64, 8.292, 16.334
Yxy	32.2444, 0.3336, 0.3276
Android (android.graphics.Color)	4289369494 (0xFFAA9596)
YUV	155.3930, -2.6587, 12.8103
Hunter-Lab	56.7829, 3.8329, 4.9283

Details

The HunterLab color $56.7829, 3.8329, 4.9283$ is a light color, and the websafe version is hex 999999 . A complement of this color would be $61.6477, -9.6343, 1.7160$, and the grayscale version is $57.4198, -3.0638, 3.1197$.

A 20% lighter version of the original color is $79.4223, 3.2906, 6.3513$, and $36.7257, 4.2174, 3.6470$ is the 20% darker color. If you saturate the color by 10%, you get $51.7355, 9.9312, 6.2857$, and if you desaturate by 10%, it is $62.1132, -2.0360, 3.7124$.

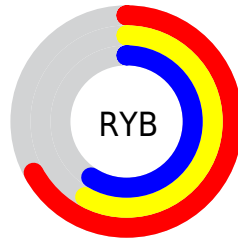
Distribution



Red (67%)

Green (58%)

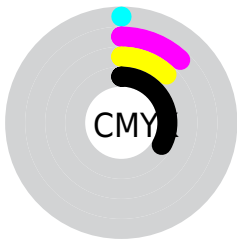
Blue (59%)



Red (67%)

Yellow (58%)

Blue (59%)

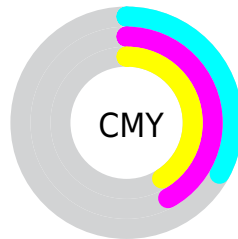


Cyan (0%)

Magenta (12%)

Yellow (12%)

Black (33%)



Cyan (33%)

Magenta (42%)

Yellow (41%)

Brightness & Saturation Gradients

These gradients show how the HunterLab color 56.7829, 3.8329, 4.9283 changes by changing the brightness by 10 percent. The first figure shows a shift by +10% for each color and the second figure -10%.

Similar to the brightness gradients but the following saturation gradients show a change of the HunterLab color 56.7829, 3.8329, 4.9283 by changing the saturation by 10% instead.

■ 56.7829, 3.8329,
4.9283

■ 56.7829, 3.8329,
4.9283

176.7006, 0.4615,
12.3266

■ 46.4201, 3.9601,
4.2414

■ 79.4947, 3.3974,
6.3907

■ 36.7768, 4.0206,
3.5833

■ 91.7694, 3.1030,
7.1627

■ 27.9129, 4.0023,
2.9552

104.6181, 2.7624,
7.9612

■ 19.9040, 3.8903,
2.3573

118.0160, 2.3787,
8.7854

■ 12.8536, 3.6619,
1.7879

131.9415, 1.9547,
9.6347

■ 6.2641, 5.2005,
1.8841

146.3754, 1.4925,

0.0000, NaN, NaN

10.5084

0.0000, NaN, NaN

161.3003, 0.9942,
11.4059

0.0000, NaN, NaN

■ 56.7829, 3.8329,
4.9283

■ 56.7829, 3.8329,
4.9283

■ 51.7355, 9.9312,
6.2857

■ 62.1132, -2.0360,
3.7124

■ 47.0185, 16.2568,
7.7952

■ 67.6819, -7.6864,
2.6181

■ 42.6968, 22.7545,
9.4602

■ 73.4580, -13.1451,
1.6291

■ 38.8473, 29.2883,
11.2603

■ 79.4159, -18.4395,
0.7297

■ 35.5577, 35.5973,
13.1358

■ 85.5348, -23.5954,
-0.0938

■ 32.9167, 41.2716,
14.9728

■ 91.7979, -28.6363,
-0.8531

■ 30.9940, 45.8009,
16.6067

■ 93.4270, -29.0158,
-2.9779

■ 29.8098, 48.7426,
17.8627

■ 29.2640, 50.1759,
18.4412

Harmonies

Analogous

The Analogous color harmony consists of three colors that are next to each other on the color wheel.



56.7842, 3.9195, 1.4976



56.7829, 3.8329, 4.9283



56.7842, 1.8739, 7.6933

Triad

The Triadic color harmony groups three colors that are evenly spaced from another and form a triangle on the color wheel.



56.7842, 3.8312, 4.9292



56.7842, -8.0010, 7.4926



56.7842, -4.6748, -3.7567

Complementary

The Complementary color scheme is a pair of colors which are on the opposite of each other on the color wheel.



56.7829, 3.8329, 4.9283



61.6477, -9.6343, 1.7160

Split Complementary

Split-complementary colors differ from the complementary color scheme. The scheme consists of three colors, the original color and two neighbors of the complement color.



56.7842, -7.7786, -1.9321



56.7829, 3.8329, 4.9283



56.7842, -9.6661, 4.6394

Square

The Square scheme is like the rectangle color scheme, but the four colors are evenly spaced on the color wheel.



56.7842, 3.8312, 4.9292



56.7842, -4.9853, 9.1083



56.7842, -9.5857, 1.1890



56.7842, -1.0538, -3.6669

Rectangle

The Rectangle color scheme consists of four colors that form a rectangle on the color wheel.



56.7829, 3.8329, 4.9283



56.7842, -0.2001, 8.8496



56.7842, -9.5857, 1.1890



56.7842, -5.8113, -3.3422

Sweetspot

The Sweet Spot groups the original color and five complimentary colors.



56.7842, 3.8312, 4.9292



82.4055, -1.4034, 5.2703



57.2958, 6.7639, -3.9304



38.6607, -0.3902, 2.5442



93.2148, -4.9737, 5.0645



40.3295, -2.1519, 2.1912

Same Dimension

The Same Dimension uses a secret algorithm to generate beautiful new colors.



56.7842, 3.8312, 4.9292



74.4593, 7.5281, 7.1530



59.4345, -0.9758, 8.2398



27.4734, 0.9430, 2.1366



25.1037, 43.0522, 15.7462



3.9380, 6.7978, 2.1268

Inverse Universe

The Inverse Universe completely reimagines the original color for something new.



56.7842, 3.8312, 4.9292



74.4593, 7.5281, 7.1530



58.8437, -4.9419, -2.1463



27.4734, 0.9430, 2.1366



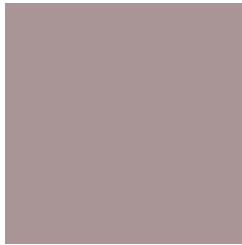
25.1037, 43.0522, 15.7462



3.9380, 6.7978, 2.1268

Previews

White Background



This preview shows how the HunterLab color 56.7829, 3.8329, 4.9283 looks on a white background.

Color Contrast Check

Large Text (above 18pt) WCAG AA × Fail

Any Text WCAG AA × Fail

Large Text (above 18pt) WCAG AAA × Fail

Any Text WCAG AAA × Fail

Black Background



This preview shows how the HunterLab color 56.7829, 3.8329, 4.9283 looks on a black background.

Color Contrast Check

Large Text (above 18pt) WCAG AA ✓ Pass

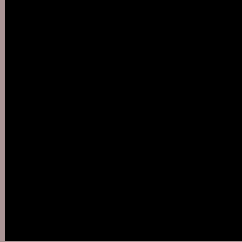
Any Text WCAG AA ✓ Pass

Large Text (above 18pt) WCAG AAA ✓ Pass

Any Text WCAG AAA ✓ Pass

If you want to check with other color combinations, try the [Color Contrast Checker](#).

HunterLab 56.7829, 3.8329, 4.9283 Background



This preview shows how black text looks on a background with the HunterLab color 56.7829, 3.8329, 4.9283.



This preview shows how white text looks on a background with the HunterLab color 56.7829, 3.8329,

4.9283.

Color Blindness Simulation

Color vision deficiency is a very complex topic, and I could not describe the different causes any better than Wikipedia does, so if you want to learn more, you should check out their [article about color blindness](#).

Dichromacy



Original Color

56.7829, 3.8329, 4.9283

Protanopia

56.7605, -1.9576, 3.9117

Deuteranopia

56.7829, 3.8329, 4.9283



Tritanopia

56.8691, 6.0757, 0.9516

Trichromacy



Original Color

56.7829, 3.8329, 4.9283

Protanomaly

56.8966, -0.0722, 4.5484

Deuteranomaly

56.7829, 3.8329, 4.9283

Tritanomaly

56.7785, 5.5938, 2.2409

Monochromacy



Original Color

56.7829, 3.8329, 4.9283

Achromatopsia

57.2519, -3.0548, 3.1106

Achromatomaly

57.0578, -0.8741, 3.8275

CSS Examples

Text

The CSS property to change the color of the text to HunterLab 56.7829, 3.8329, 4.9283 is called "color". The color property can be set on classes, ids or directly on the HTML element.

This example shows how text in the color `rgb(170, 149, 150)` looks like.

```
.text, #text, p{  
    color:rgb(170, 149, 150)  
}
```

If you want to add a text shadow in that color use the text-shadow property, you can generate a text shadow directly with our [CSS Text Shadow Generator](#).

Here you see how black text with a 4 pixel rgb(170, 149, 150) colored shadow looks like.

```
.shadow{ text-shadow: 4px 4px 2px rgb(170, 149, 150) }
```

Border

The CSS property to change the border of an element to HunterLab 56.7829, 3.8329, 4.9283 is called "border".

The border property can be set on classes, ids or directly on the HTML element.

This example shows the color as border, it can be applied via the CSS property "border" or "border-color".

```
.border, #border, table{ border:4px solid rgb(170, 149, 150) }
```


If only the border color should be changed use the property `border-color`.

```
.border{ border-color:rgb(170, 149, 150) }
```

If you want to add a box shadow in that color use:

Here you see how a box with a 4 pixel `rgb(170, 149, 150)` colored shadow looks like.

```
.boxshadow{ -moz-box-shadow:4px 4px 4px  
4px rgb(170, 149, 150); -webkit-box-  
shadow:4px 4px 4px 4px rgb(170, 149, 150);  
box-shadow:4px 4px 4px 4px rgb(170, 149,  
150) }
```

Background

The CSS property to change the background color of an element to HunterLab 56.7829, 3.8329, 4.9283 is called "background". The background property can be set on classes, ids or directly on the HTML element.

```
.background, #background, body{  
background: rgb(170, 149, 150) }
```

If only the background color should be changed can be used:

```
.background{ background-color: rgb(170,  
149, 150) }
```

This example shows the color as background, it is applied via the CSS property "background".

To optimize and compress your CSS code, you can use our [online CSS compressor and optimizer](#) based on csstidy. If you want to create a linear or radial gradient as background or border, check our [CSS Gradient Generator](#).

Hey! You found this booklet interesting? Support Converting Colors with the new Membership Option!

The pro membership hides all ads, plus gives you double the colors in the color bucket, and more awesome pro features!

[Learn more, Memberships starting at \\$2.50/m!](#)

**Follow me
on Twitter!**

@ConvertingColor