

Converting Colors

HunterLab(56.7837, 5.2793,
6.5203)

Have a look what the booklet for
HunterLab(56.7837, 5.2793, 6.5203)
contains.

HunterLab(56.7924, 5.0678, 6.6939)	3
<i>Conversions</i>	4
<i>Details</i>	6
<i>Harmonies</i>	12
<i>Previews</i>	24
<i>Color Blindness Simulation</i>	28
<i>CSS Examples</i>	31

Color

**HunterLab(56.7924, 5.0678,
6.6939)**

Conversions

Conversions Part 1

Format	Color
Hex	AE9492
RGB	174, 148, 146
RGB Percent	68%, 58%, 57%
CMY	0.3176, 0.4196, 0.4274
CMYK	0.00, 0.15, 0.16, 0.32
HSL	4°, 15%, 63%
HSV	4°, 16%, 68%
XYZ	33.2337, 32.2538, 31.6681
YIQ	155.5460, 16.1380, 4.8900

Conversions

Conversions Part 2

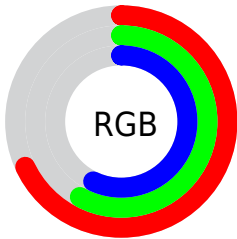
Format	Color
RYB	174, 148, 146
Decimal	11441298
CIELab	63.55, 9.35, 4.65
CIELCh	64, 10.443, 26.437
Yxy	32.2552, 0.3421, 0.3320
Android (android.graphics.Color)	4289631378 (0xFFAE9492)
YUV	155.5460, -4.7062, 16.1842
Hunter-Lab	56.7924, 5.0678, 6.6939

Details

The HunterLab color $56.7924, 5.0678, 6.6939$ is a light color, and the websafe version is hex 999999 . A complement of this color would be $62.1861, -10.5246, -0.0452$, and the grayscale version is $57.4889, -3.0675, 3.1235$.

A 20% lighter version of the original color is $79.5199, 4.9040, 8.3434$, and $36.6863, 5.2364, 4.8129$ is the 20% darker color. If you saturate the color by 10%, you get $51.9949, 10.7035, 8.7019$, and if you desaturate by 10%, it is $61.8591, -0.3135, 4.7197$.

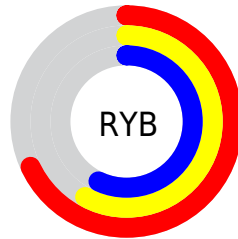
Distribution



Red (68%)

Green (58%)

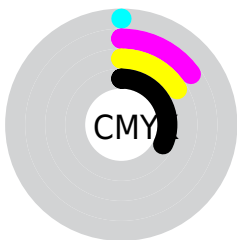
Blue (57%)



Red (68%)

Yellow (58%)

Blue (57%)

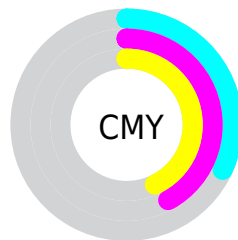


Cyan (0%)

Magenta (15%)

Yellow (16%)

Black (32%)



Cyan (32%)

Magenta (42%)

Yellow (43%)

Brightness & Saturation Gradients

These gradients show how the HunterLab color 56.7924, 5.0678, 6.6939 changes by changing the brightness by 10 percent. The first figure shows a shift by +10% for each color and the second figure -10%.

Similar to the brightness gradients but the following saturation gradients show a change of the HunterLab color 56.7924, 5.0678, 6.6939 by changing the saturation by 10% instead.

■ 56.7924, 5.0678,
6.6939

■ 56.7924, 5.0678,
6.6939

176.7145, 2.2171,
14.9760

■ 46.4290, 5.1229,
5.8800

■ 79.5053, 4.7650,
8.3865

■ 36.7850, 5.1068,
5.0843

■ 91.7806, 4.5324,
9.2643

■ 27.9204, 5.0062,
4.3051

104.6297, 4.2511,
10.1635

■ 19.9107, 4.8051,
3.5376

118.0281, 3.9245,
11.0841

■ 12.8594, 4.4789,
2.7714

131.9541, 3.5555,
12.0259

■ 6.2719, 6.1614,
3.4141

146.3885, 3.1465,

0.0000, NaN, NaN

12.9886

0.0000, NaN, NaN

161.3138, 2.6997,
13.9721

0.0000, NaN, NaN

■ 56.7924, 5.0678,
6.6939

■ 56.7924, 5.0678,
6.6939

■ 51.9949, 10.7035,
8.7019

■ 61.8591, -0.3135,
4.7197

■ 47.5091, 16.5975,
10.7249

■ 67.1539, -5.4533,
2.7820

■ 43.3929, 22.7068,
12.7307

■ 72.6480, -10.3798,
0.8818

■ 39.7133, 28.9217,
14.6601

■ 78.3173, -15.1213,
-0.9838

■ 36.5459, 35.0287,
16.4197

■ 84.1421, -19.7046,
-2.8190

■ 33.9663, 40.6891,
17.8837

■ 90.1065, -24.1540,
-4.6281

■ 32.0355, 45.4655,
18.9164

■ 93.6690, -28.1134,
-2.6580

■ 30.7756, 48.9300,
19.4442

■ 30.4511, 49.8363,
19.6363

Harmonies

Analogous

The Analogous color harmony consists of three colors that are next to each other on the color wheel.



56.7937, 6.0225, 2.5686



56.7924, 5.0678, 6.6939



56.7937, 1.9158, 9.6362

Triad

The Triadic color harmony groups three colors that are evenly spaced from another and form a triangle on the color wheel.



56.7937, 5.0660, 6.6948



56.7937, -10.1843, 7.5290



56.7937, -3.5794, -5.9178

Complementary

The Complementary color scheme is a pair of colors which are on the opposite of each other on the color wheel.



56.7924, 5.0678, 6.6939



62.1861, -10.5246, -0.0452

Split Complementary

Split-complementary colors differ from the complementary color scheme. The scheme consists of three colors, the original color and two neighbors of the complement color.



56.7937, -7.8187, -4.3387



56.7924, 5.0678, 6.6939



56.7937, -11.5552, 3.6093

Square

The Square scheme is like the rectangle color scheme, but the four colors are evenly spaced on the color wheel.



56.7937, 5.0660, 6.6948



56.7937, -6.8998, 10.0903



56.7937, -10.7029, -0.7647



56.7937, 0.9393, -4.9298

Rectangle

The Rectangle color scheme consists of four colors that form a rectangle on the color wheel.



56.7924, 5.0678, 6.6939



56.7937, -0.9542, 10.6445



56.7937, -10.7029, -0.7647



56.7937, -5.0831, -5.6666

Sweetspot

The Sweet Spot groups the original color and five complimentary colors.



56.7937, 5.0660, 6.6948



84.0145, -1.1306, 6.0924



57.0443, 10.2996, -5.3056



39.3808, -0.3038, 2.9577



94.3401, -5.0338, 5.1257



41.3092, -2.2042, 2.2444

Same Dimension

The Same Dimension uses a secret algorithm to generate beautiful new colors.



56.7937, 5.0660, 6.6948



74.3510, 9.2480, 9.8898



60.7191, -1.7759, 10.8292



28.4675, 0.6553, 2.5295



26.0015, 42.2158, 16.7610



4.6606, 6.0159, 2.9772

Inverse Universe

The Inverse Universe completely reimagines the original color for something new.



62.1861, -10.5246, -0.0452



83.0370, -15.8975, -0.9755



58.0229, -3.8838, -5.2337



29.9541, -3.6351, 0.6734



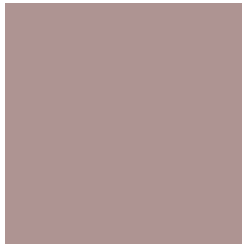
45.6959, -21.8675, -9.9103



7.8063, -3.8740, -1.3944

Previews

White Background



This preview shows how the HunterLab color 56.7924, 5.0678, 6.6939 looks on a white background.

Color Contrast Check

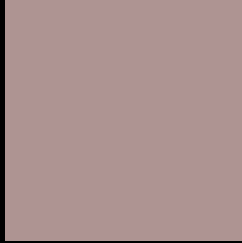
Large Text (above 18pt) WCAG AA × Fail

Any Text WCAG AA × Fail

Large Text (above 18pt) WCAG AAA × Fail

Any Text WCAG AAA × Fail

Black Background



This preview shows how the HunterLab color 56.7924, 5.0678, 6.6939 looks on a black background.

Color Contrast Check

Large Text (above 18pt) WCAG AA ✓ Pass

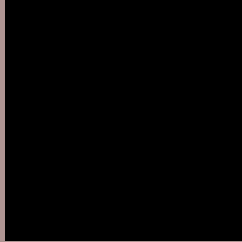
Any Text WCAG AA ✓ Pass

Large Text (above 18pt) WCAG AAA ✓ Pass

Any Text WCAG AAA ✓ Pass

If you want to check with other color combinations, try the [Color Contrast Checker](#).

HunterLab 56.7924, 5.0678, 6.6939 Background



This preview shows how black text looks on a background with the HunterLab color 56.7924, 5.0678, 6.6939.



This preview shows how white text looks on a background with the HunterLab color 56.7924, 5.0678,

6.6939.

Color Blindness Simulation

Color vision deficiency is a very complex topic, and I could not describe the different causes any better than Wikipedia does, so if you want to learn more, you should check out their [article about color blindness](#).

Dichromacy



Original Color

56.7924, 5.0678, 6.6939

Protanopia

56.7640, -2.1166, 5.2416

Deuteranopia

56.8690, 3.8992, 6.7589



Tritanopia

56.6925, 8.2476, 1.2482

Trichromacy



Original Color

56.7924, 5.0678, 6.6939

Protanomaly

56.7132, 0.5935, 5.6668

Deuteranomaly

56.9688, 4.2338, 6.8759

Tritanomaly

56.8458, 7.1116, 3.2663

Monochromacy



Original Color

56.7924, 5.0678, 6.6939

Achromatopsia

57.6586, -3.0765, 3.1327

Achromatomaly

57.3027, -0.0909, 4.5721

CSS Examples

Text

The CSS property to change the color of the text to HunterLab 56.7924, 5.0678, 6.6939 is called "color". The color property can be set on classes, ids or directly on the HTML element.

This example shows how text in the color `rgb(174, 148, 146)` looks like.

```
.text, #text, p{  
    color:rgb(174, 148, 146)  
}
```

If you want to add a text shadow in that color use the text-shadow property, you can generate a text shadow directly with our [CSS Text Shadow Generator](#).

Here you see how black text with a 4 pixel rgb(174, 148, 146) colored shadow looks like.

```
.shadow{ text-shadow: 4px 4px 2px rgb(174, 148, 146) }
```

Border

The CSS property to change the border of an element to HunterLab 56.7924, 5.0678, 6.6939 is called "border".

The border property can be set on classes, ids or directly on the HTML element.

This example shows the color as border, it can be applied via the CSS property "border" or "border-color".

```
.border, #border, table{ border:4px solid rgb(174, 148, 146) }
```


If only the border color should be changed use the property `border-color`.

```
.border{ border-color:rgb(174, 148, 146) }
```

If you want to add a box shadow in that color use:

Here you see how a box with a 4 pixel `rgb(174, 148, 146)` colored shadow looks like.

```
.boxshadow{ -moz-box-shadow:4px 4px 4px  
4px rgb(174, 148, 146); -webkit-box-  
shadow:4px 4px 4px 4px rgb(174, 148, 146);  
box-shadow:4px 4px 4px 4px rgb(174, 148,  
146) }
```

Background

The CSS property to change the background color of an element to HunterLab 56.7924, 5.0678, 6.6939 is called "background". The background property can be set on classes, ids or directly on the HTML element.

```
.background, #background, body{  
background: rgb(174, 148, 146) }
```

If only the background color should be changed can be used:

```
.background{ background-color: rgb(174,  
148, 146) }
```

This example shows the color as background, it is applied via the CSS property "background".

To optimize and compress your CSS code, you can use our [online CSS compressor and optimizer](#) based on csstidy. If you want to create a linear or radial gradient as background or border, check our [CSS Gradient Generator](#).

Hey! You found this booklet interesting? Support Converting Colors with the new Membership Option!

The pro membership hides all ads, plus gives you double the colors in the color bucket, and more awesome pro features!

[Learn more, Memberships starting at \\$2.50/m!](#)

**Follow me
on Twitter!**

@ConvertingColor